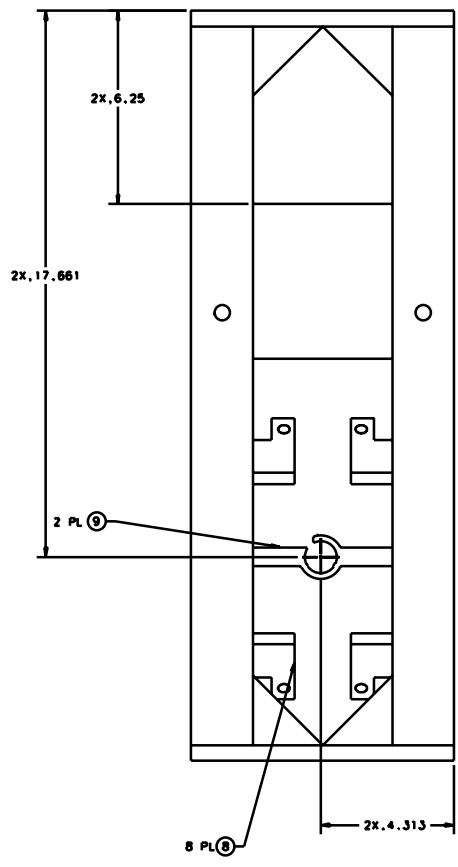
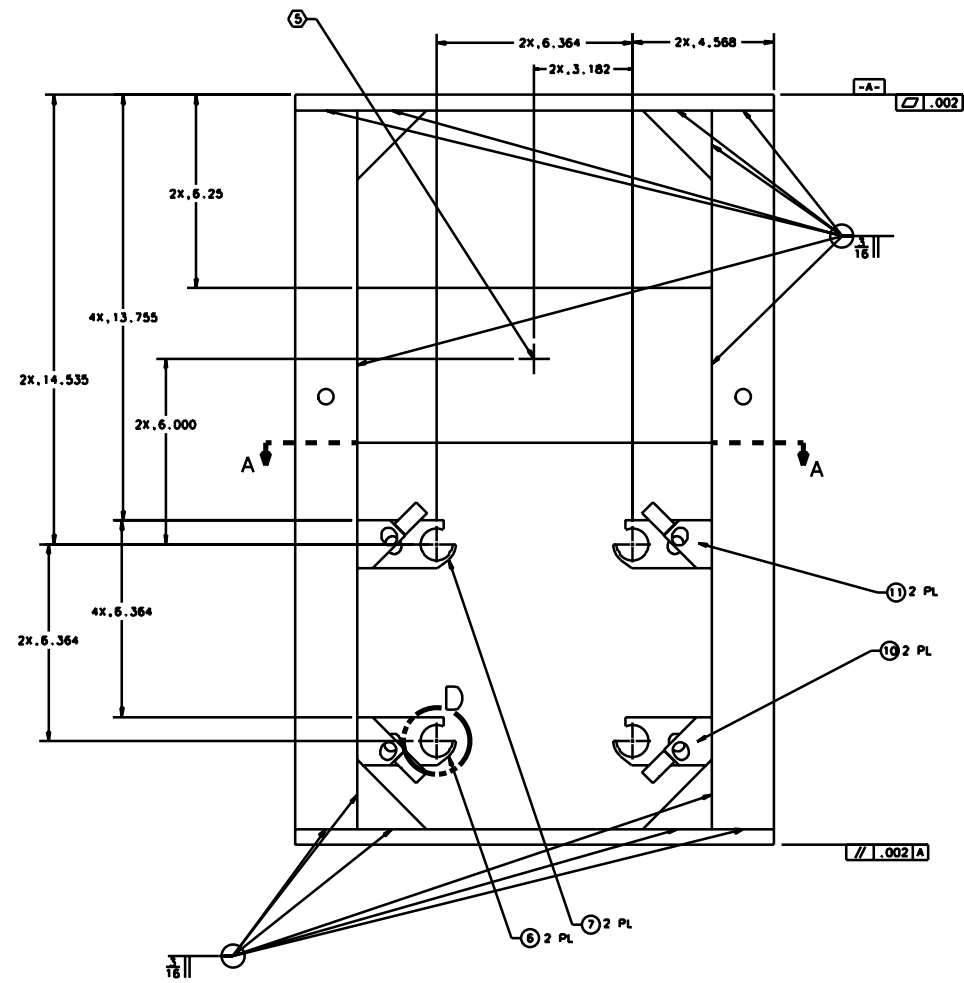
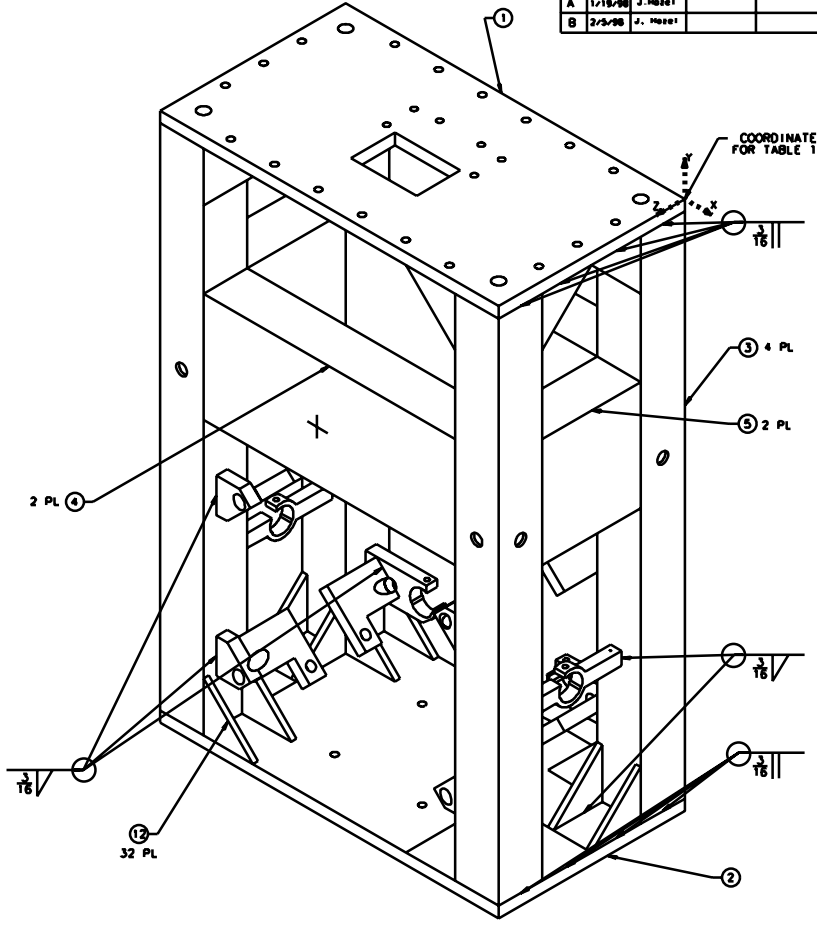
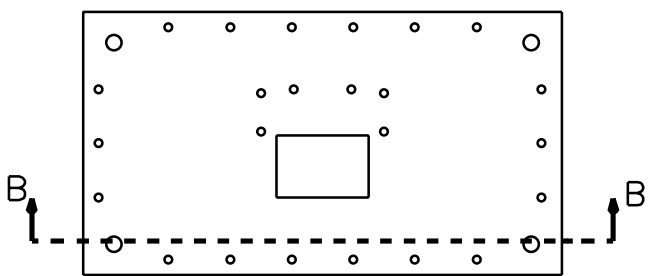


NOTES: (UNLESS OTHERWISE SPECIFIED)

- SPECIFICATIONS FOR THE CONSTRUCTION OF THIS ASSEMBLY ARE DETAILED IN LIGO E970038, THE LARGE OPTIC SUSPENSION STRUCTURAL FABRICATION SPECIFICATION.
- THESE FEATURES TO BE MACHINED AFTER ANNEALING.
- FLY CUT THESE SURFACES, OF BRACKETS FIND NOS. 6 AND 7, AT A 2° ANGLE. REMOVE MATERIAL FROM THE CENTER OF THE ASSEMBLY TO .25 FROM THE LEGS.
- TABLE 1 DEFINES THE VECTORS THAT ARE THE CENTERLINES OF THE EIGHT THREADED HOLES DEFINED IN VIEW E ON SHEET 2.
- ETCH OR SCRIBE CROSSHAIRS, POSITION AND APPROX SIZE AS SHOWN, ONTO FRONT AND BACK OF STRUCTURE. ETCH .01 WIDE MAX. AND .02 MAX BELOW SURFACE, AFTER ANNEALING.



REV	DATE	DRAWN BY	CHECKED	QCC	DESCRIPTION
A	1/18/98	J. Moze			E980004/INITIAL RELEASE
B	2/3/98	J. Moze			E980011/CHANGE TO NOTE 3. CHANGE TO SECTION A-A

QTY	PART NO.	DESCRIPTION	MATERIAL	FINISH
32		GUSSET, 2.25 x 2.25 x .45"	.13 THICK 304 STAINLESS	
2	D960143	LOS BRACKET, FRONT, TOP		
2	D960142	LOS BRACKET, FRONT, BOTTOM		
2	D960141	LOS BRACKET, SENSOR/ACTUATOR, SIDE		
8	D960140	LOS BRACKET, SAFETY STOP		
2	D960137	LOS BRACKET, SENSOR/ACTUATOR, TOP		
2	D960136	LOS BRACKET, SENSOR/ACTUATOR, BOTTOM		
2	D960506	LOS SIDE STIFFENER		
2	D960502	LOS FRONT STIFFENER		
4	D960504	LOS LEG		
1	D960505	LOS BOTTOM PLATE		
1	D960503	LOS TOP PLATE		

APPROVALS	DATE	TITLE
J. Moze	4/98	DR

ASSEMBLY	SCALE	SHEET	TOTAL SHEETS
D960132	1/2	E	3

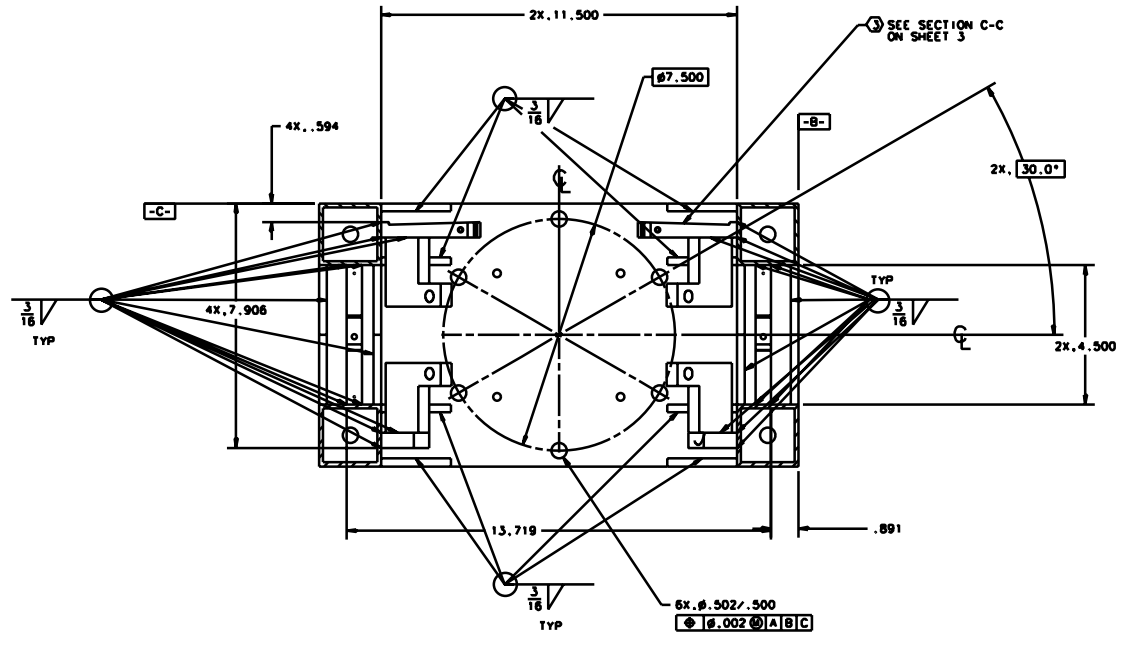
LIGO CALIFORNIA INSTITUTE OF TECHNOLOGY MASSACHUSETTS INSTITUTE OF TECHNOLOGY

LARGE OPTIC SUSPENSION STRUCTURE ASSEMBLY

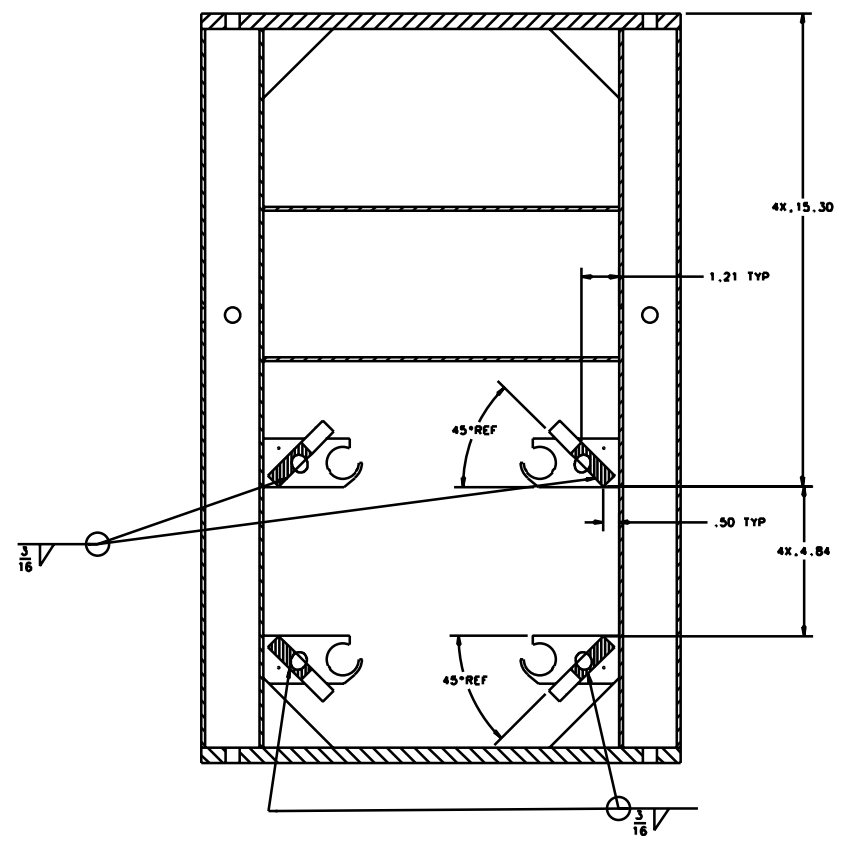
D960133

SHEET 1 OF 3

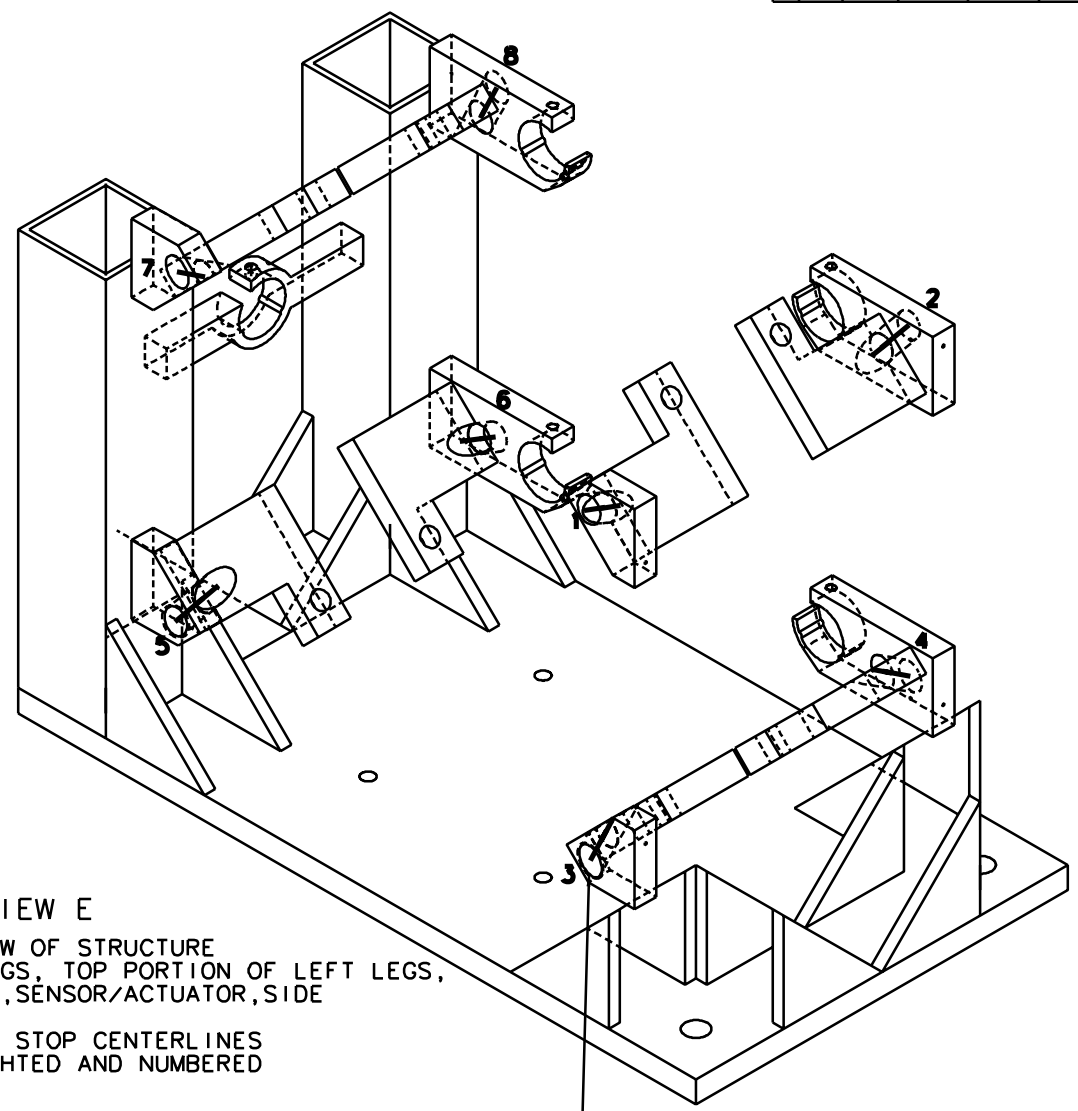
REV	DATE	DRWN BY	CHECKED	QCC	CDW/CSRP/PH/CH
A	1/18/98	J. Hazzel			E980004/INITIAL RELEASE
B	2/3/98	J. Hazzel			E980011/CHANGE TO NOTE 3 CHANGE TO SECTION A-A



SECTION A-A



SECTION B-B



VIEW E
ISO VIEW OF STRUCTURE
WITHOUT: RIGHT LEGS, TOP PORTION OF LEFT LEGS,
RIGHT LOS BRACKET, SENSOR/ACTUATOR, SIDE
CHAMFER STOP CENTERLINES
HIGHLIGHTED AND NUMBERED

TABLE 1 CHAMFER STOP VECTORS

CHAMFER STOP NUMBER	START POINT	END POINT
1	-3.039, -14.272, 7.906	-3.526, -15.278, 6.089
2	-3.061, -14.319, 0.594	-3.525, -15.278, 2.326
3	-3.039, -21.161, 7.906	-3.526, -20.156, 6.089
4	-3.015, -21.205, 0.594	-3.525, -20.153, 2.496
5	-12.461, -21.161, 7.906	-11.974, -20.156, 6.089
6	-12.485, -21.205, 0.594	-11.975, -20.153, 2.496
7	-12.461, -14.272, 7.906	-11.974, -15.278, 6.089
8	-12.439, -14.319, 0.594	-11.975, -15.278, 2.326

START POINTS LIE ON A PLANE OF A BRACKET OF THIS ASSEMBLY.
ALL POINTS ARE REFERENCED FROM (0,0,0) OF COORDINATE SYSTEM
DESIGNATED ON ISO VIEW ON SHEET 1.

PART NUMBER: D960132 FILE LOCATION: home/ccc/docs/D960133.ppt	APPROVALS: J. Hazzel DATE: 4/98 TITLE: LARGE OPTIC SUSPENSION STRUCTURE ASSEMBLY	LIGO CALIFORNIA INSTITUTE OF TECHNOLOGY MASSACHUSETTS INSTITUTE OF TECHNOLOGY PARTS LIST D960133 SCALE: 1/2 SHEET: 2 OF 3
--	--	--

1

2

3

4

5

6

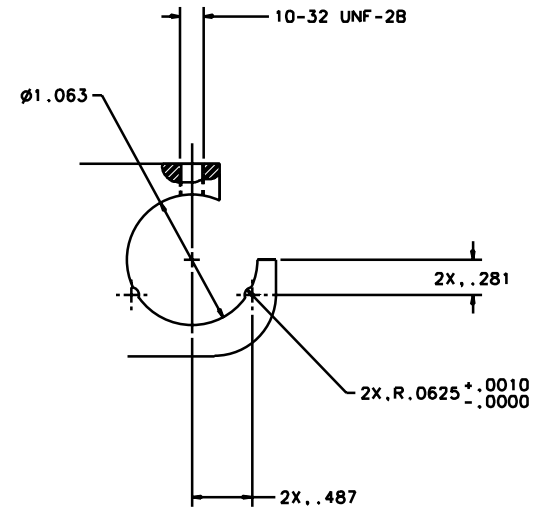
7

8

REV	DATE	DRWN BY	CHECKED	QCC	DESCRIPTION
A	1/18/98	J. Hazzel			0980004/INITIAL RELEASE
B	2/6/98	J. Hazzel			0980011/CHANGE TO NOTE 3 CHANGE TO SECTION 4-4



SECTION C-C
FLY CUT DEFINED
IN NOTE ③



VIEW D ②
SCALE 4/1
TYPICAL 6 PLACES

REV	DATE	DRWN BY	CHECKED	QCC	DESCRIPTION
A	1/18/98	J. Hazzel			0980004/INITIAL RELEASE
B	2/6/98	J. Hazzel			0980011/CHANGE TO NOTE 3 CHANGE TO SECTION 4-4

REV	DATE	DRWN BY	CHECKED	QCC	DESCRIPTION
A	1/18/98	J. Hazzel			0980004/INITIAL RELEASE
B	2/6/98	J. Hazzel			0980011/CHANGE TO NOTE 3 CHANGE TO SECTION 4-4

PROJECT	D960132	DATE	4/98
FILE LOCATION	home/occc/rocca/0980133.ppt	SCALE	1/2

APPROVALS	DATE	FILE
J. Hazzel	4/98	LIGO CALIFORNIA INSTITUTE OF TECHNOLOGY MASSACHUSETTS INSTITUTE OF TECHNOLOGY
LARGE OPTIC SUSPENSION STRUCTURE ASSEMBLY		REV B
D960133		SHEET 3 OF 3

1

2

3

4

5

6

7

8