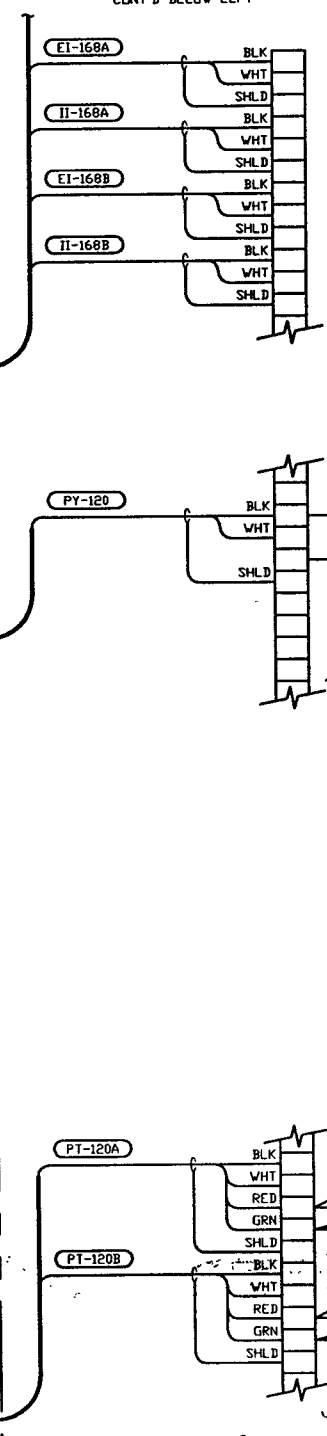
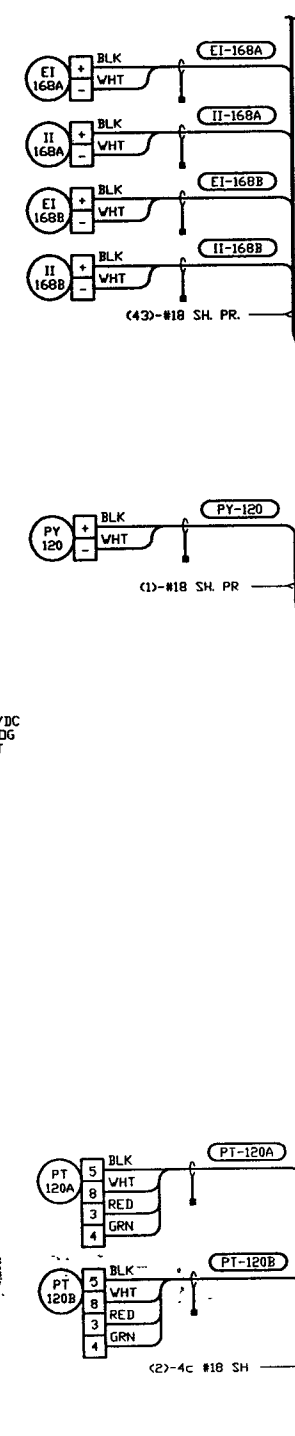
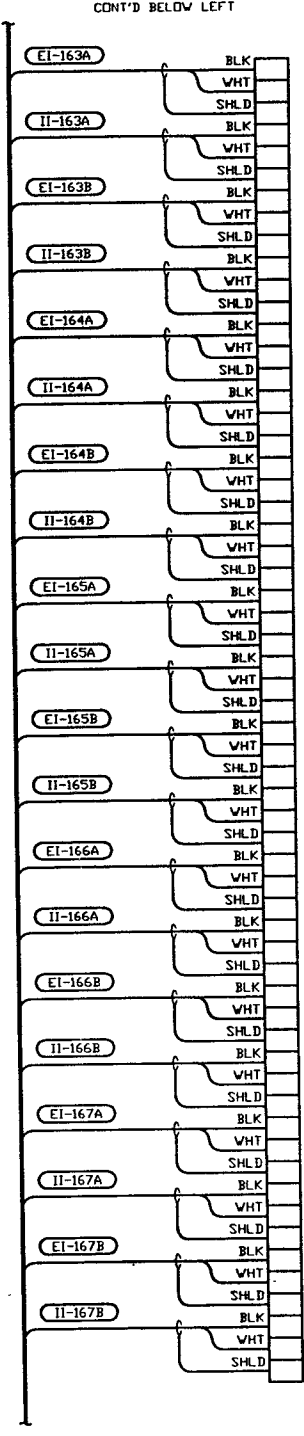
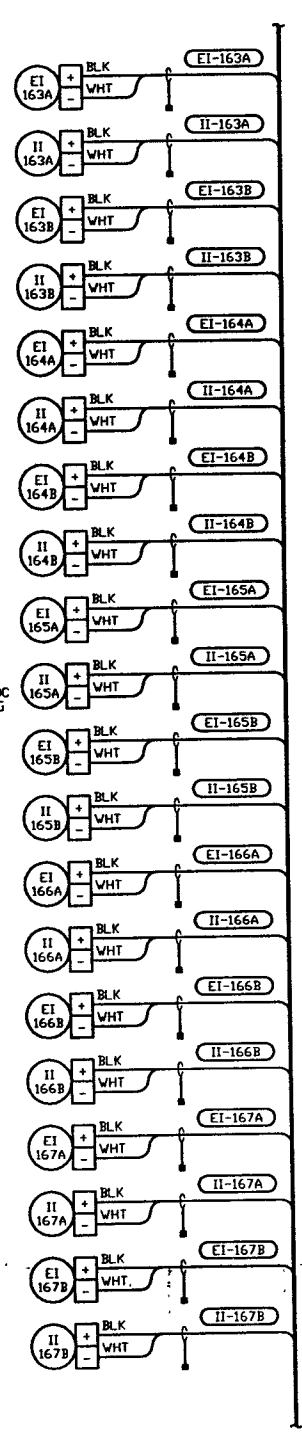
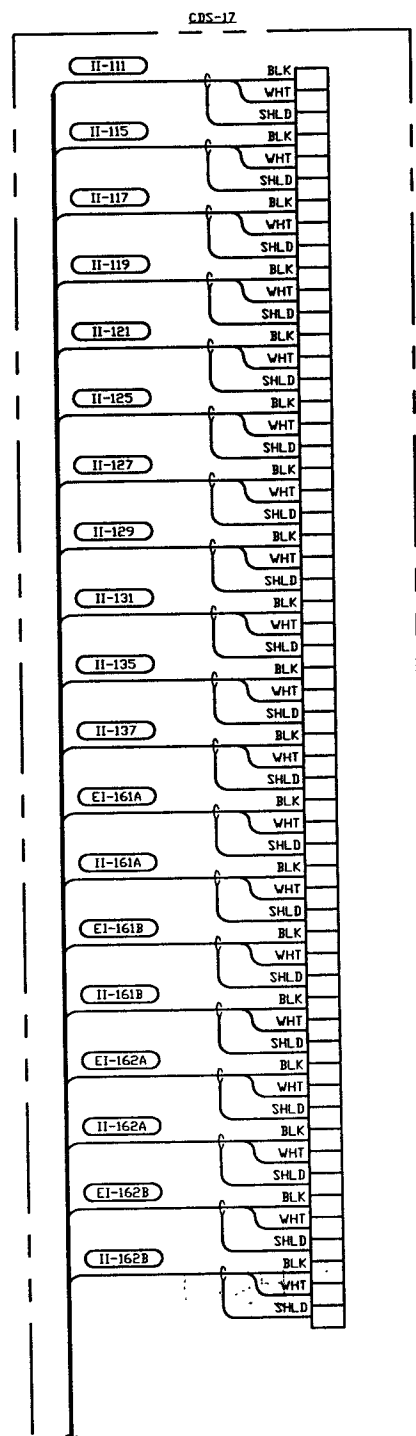
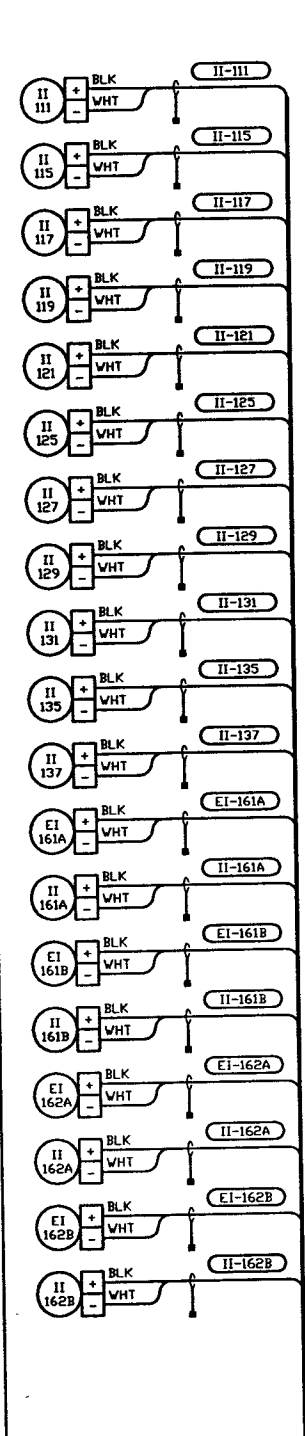


SEE SHEET 1 FOR REVISIONS

<b>PROCESS SYSTEMS INTERNATIONAL INC.</b> 20 WALKUP DR. WESTBOROUGH, MASSACHUSETTS 01581 USA			
<b>CDS INTERFACE DIAGRAM</b> <b>LIGO VACUUM EQUIPMENT</b> <b>WASHINGTON SITE</b> <b>CORNER STATION</b>			
CAB FILE V0493123/312352	SIZE D	DWG NO. V049-3-123	REV. 0
SCALE NONE	SHEET 2 OF 4		

LIG0-D960101-00-V



CONT'D ABOVE RIGHT

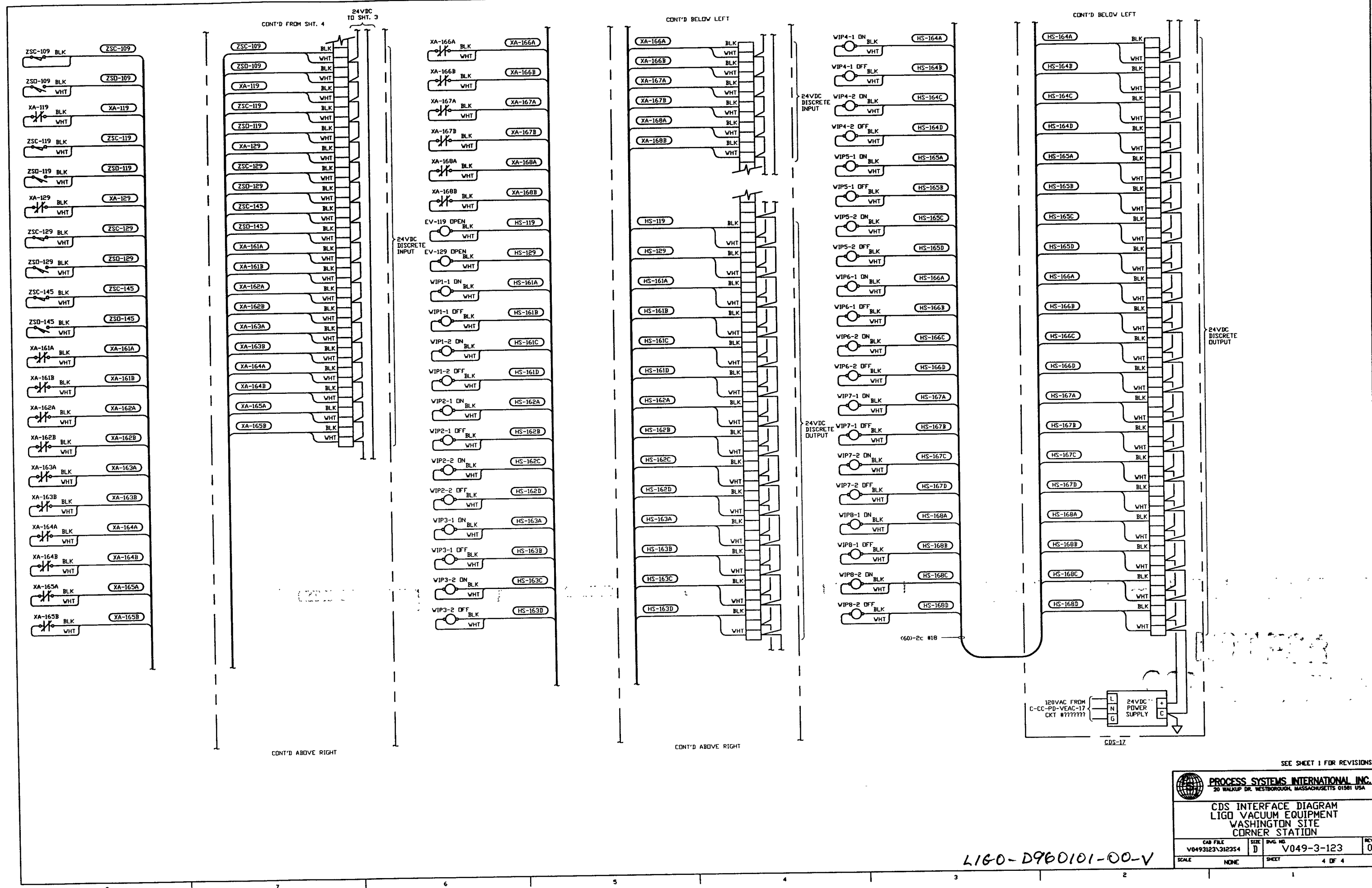
CONT'D ABOVE RIGHT

CONT'D ON SHT. 4

SEE SHEET 1 FOR REVISIONS

<b>PROCESS SYSTEMS INTERNATIONAL INC.</b> 20 WALKUP DR. WESTBOROUGH, MASSACHUSETTS 01581 USA			
<b>CDS INTERFACE DIAGRAM</b> <b>LIGO VACUUM EQUIPMENT</b> <b>WASHINGTON SITE</b> <b>CORNER STATION</b>			
CAB FILE	SIZE	REV. NO.	REV.
V0493123/312333	D	V049-3-123	0
SCALE	NONE	SHEET	3 OF 4

L160-0960101-00-V



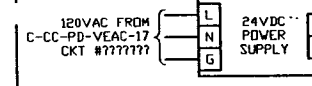
CONT'D FROM SHT. 4

CONT'D BELOW LEFT

CONT'D BELOW LEFT

CONT'D ABOVE RIGHT

CONT'D ABOVE RIGHT



CDS-17

(60)-2c #18

SEE SHEET 1 FOR REVISIONS

PROCESS SYSTEMS INTERNATIONAL, INC. 20 WALKUP DR. WESTBOROUGH, MASSACHUSETTS 01581 USA			
<b>CDS INTERFACE DIAGRAM</b> LIGO VACUUM EQUIPMENT WASHINGTON SITE CORNER STATION			
CAD FILE	SIZE	DRG. NO.	REV.
V0493123\312354	D	V049-3-123	0
SCALE	NONE	SHEET	4 OF 4

L160-D960101-00-V