

1

2

3

4

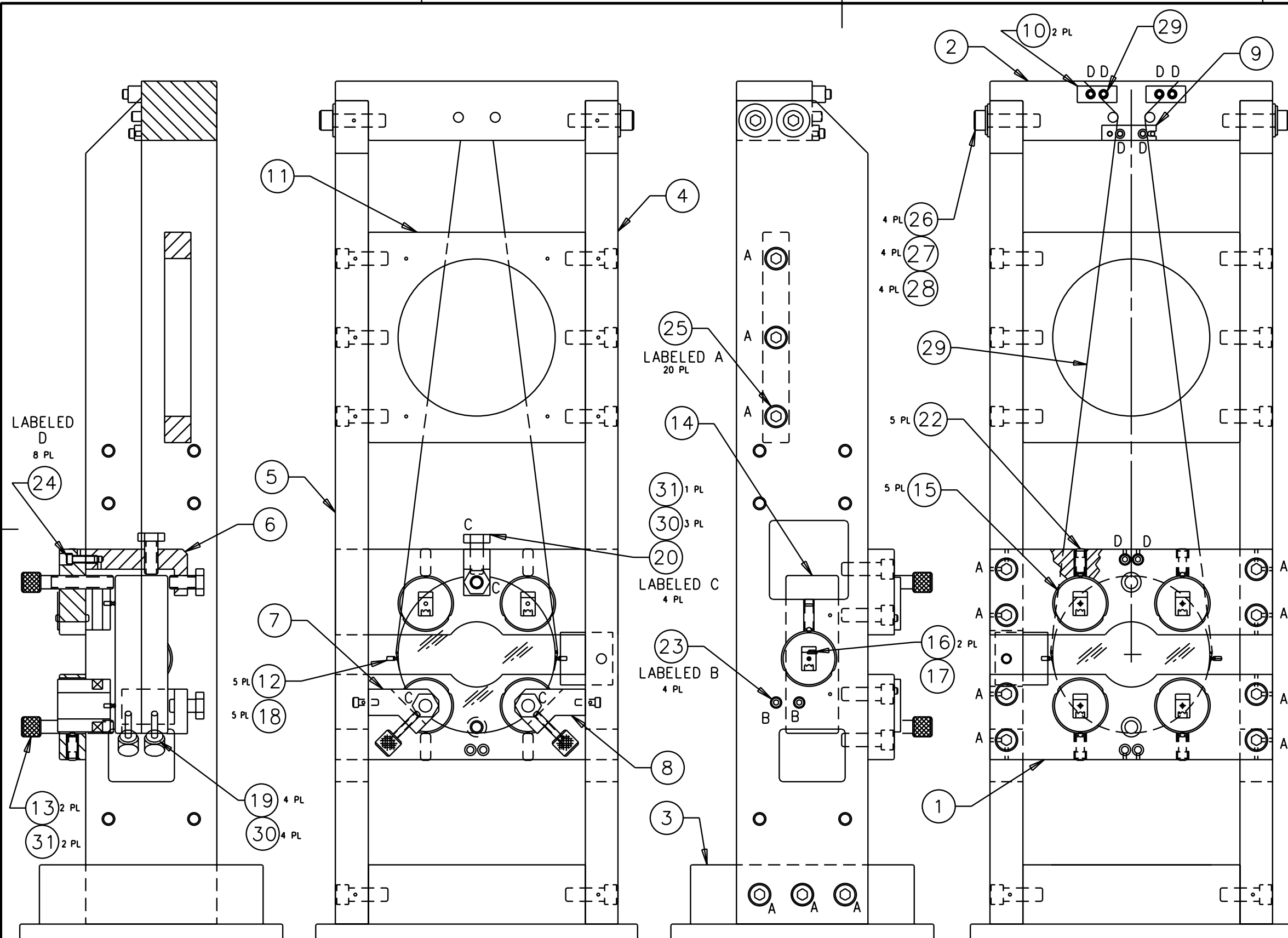
REV	DATE	BY	CHKD	DESCRIPTION
A	7-28-97	J. Hazel		E970121/INITIAL RELEASE
B	11-7-00	J. Romie		E980221/UPDATE HARDWARE
C	12-03-01	J. Romie		E010354/4th CONFIGURATION

A

B

C

D



QTY	PART NUMBER	DISCRIPTION	ITEM NO.
ALT	D010085	SPRING PLUNGER	22
3	D010074	SOS FLUOREL TIP	31
ALT	LEE SPRING C1-012B-3SS	STAINLESS COMP. SPRING	30
7	LEE SPRING C012X250PBBR	PHOSPHOR BRONZE SPRING	30
AR	CFW 100-165	Ø.0017"±.0001"STEEL MUSIC WIRE	29
4	1/4	SST WASHER, REDUCED OD	28
4	1/4	SST LOCK WASHER	27
4	UC COMPONENTS C-2020-NA	1/4-20x1.25L Ag PLATED SHCS	26
20	UC COMPONENTS C-2012-NA	1/4-20 X.75L Ag PLATED SHCS	25
8	UC COMPONENTS C-408-NA	4-40 X.50 LG Ag PLATED SHCS	24
4	UC COMPONENTS C-406-NA	4-40 X.38 LG Ag PLATED SHCS	23
5	84985A999	SST SPRING PLUNGER, 10-32 .75-2.5 LBS, McMASTER P/N	22
4	D970311	SAFETY STOP, CONDUCTIVE	20
4	D970312	SAFETY STOP, CONDUCTIVE, SMALL	19
6	D960501	MAGNET	18
1	D970188	GUIDE ROD	17
2	D970187	WIRE STANDOFF	16
5	D960011	SENSOR/ACTUATOR ASSEMBLY	15
1		OPTIC	14
2	D970313	SAFETY STOP, CONDUCTIVE, LONG	13
6	D970075	DUMBBELL STANDOFF	12
1	D960009	STIFFENER PLATE	11
2	D960134	CLAMP, SUSPENSION BLOCK	10
1	1205308-1	WIRE CLAMP	9
1	D960008-2	LOWER CLAMP, OPPOSITE	8
1	D960008-1	LOWER CLAMP	7
1	D960007	UPPER MIRROR CLAMP	6
1	D960006	LEFT SIDE PLATE	5
1	D960005	RIGHT SIDE PLATE	4
1	D960004	TOWER BASE	3
1	D960003	SUSPENSION BLOCK	2
2	D960002	SENSOR/ACTUATOR PLATE	1

A

B

C

D

DRWN J. Hazel 12-29-95
 CHK

LIGO PROJECT
 CALIFORNIA INSTITUTE OF TECHNOLOGY
 MASSACHUSETTS INSTITUTE OF TECHNOLOGY

SMALL OPTIC SUSPENSION ASSEMBLY
 SCALE: 1/2
 DRAWING NUMBER: D960001-C-D
 SHEET 1 of 2

1

2

3

4

1

2

3

4

NOTES: (UNLESS OTHERWISE SPECIFIED)

1. TORQUE THE SCREWS THAT HOLD THE SIDE PLATES TO THE TOWER BASE AND THE SUSPENSION BLOCK TO 100 IN LB.
2. TORQUE THE SCREWS THAT HOLD THE STIFFENER PLATE TO THE SIDE PLATES TO 100 IN LB.
3. REFER TO E970037-00-D FOR THE ASSEMBLY AND OPTIC HANGING PROCEDURE. THIS PROCEDURE ALSO DETAILS THE USE OF THE FIXTURES AND THE CLEANING AND BAKING PROCEDURES.

			49
REF	D000035	MAGNET AND DUMBBELL SANDING FIXTURE	48
REF	D961412	SET SCREW TOOL	47
REF	D970314	WINCH ADAPTER PLATE, SOS	46
REF	D000036	MAGNET-TO-DUMBBELL ASSEMBLY FIXTURE	45
REF	D970180	WINCH FIXTURE	44
REF	D000335	SMALL OPTIC GUIDE ROD GLUING FIXT.	43
			42
			41
			40
REF	D000342	MAGNET/STANDOFF ASSEMBLY FIXTURE	39
			38
REF	D960159	SOS DUMMY MASS	37
ALT		10-32X.75 SOC HEAD SET SCREW	22
ALT		SENSOR/ACT. ASSY, SHORT, SMD	15
ALT	D970181	BRACKET, SOS OPTIC CLEANING	6
QTY	PART NUMBER	DISCRIPTION	ITEM NO.

DRWN	12-29-95
CHK	

LIGO PROJECT

CALIFORNIA INSTITUTE OF TECHNOLOGY
MASSACHUSETTS INSTITUTE OF TECHNOLOGY

SMALL OPTIC SUSPENSION ASSEMBLY

SCALE:	DRAWING NUMBER	SHEET
1/2	D960001-C-D	2 of 2

1

2

3

4