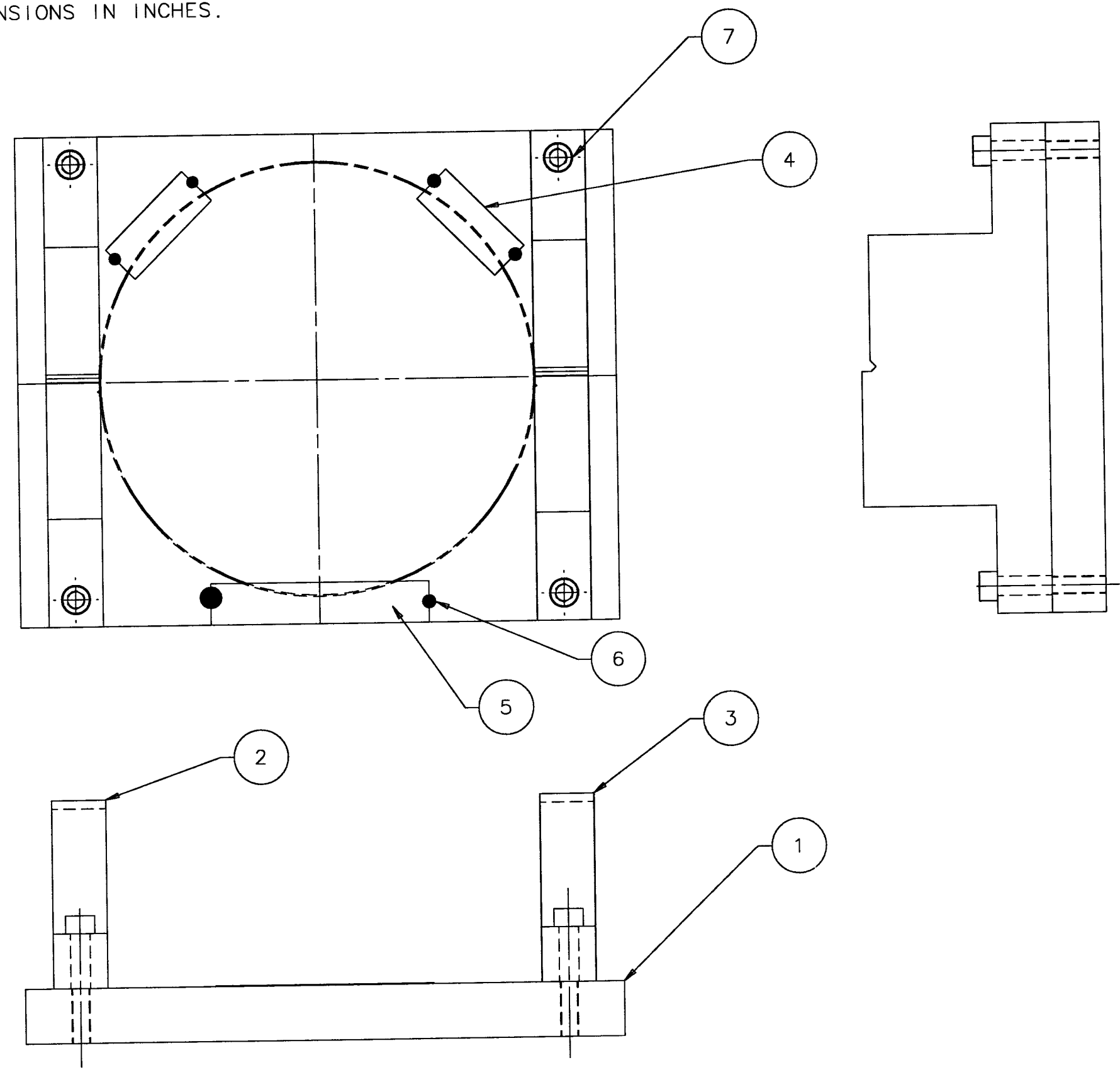


NOTES:

1. DIMENSIONS IN INCHES.



- ① D950156-00 BASE PLATE
- ② D950159-00 LEFT BLOCK
- ③ D950160-00 RIGHT BLOCK
- ④ .38x1.00x.0075 KAPTON, 2 PL
- ⑤ .38x2.00x.0075 KAPTON
- ⑥ ADHESIVE
- ⑦ #8-32x.75 SHCS, 4 PL

FIXTURE, GUIDE RODS AND
 SIDE ACTUATORS, BONDING
 END TEST MASS
 TWO DEGREE WEDGE
 4"φ X 3.5" THICK

ASSEMBLY
 D950155-01