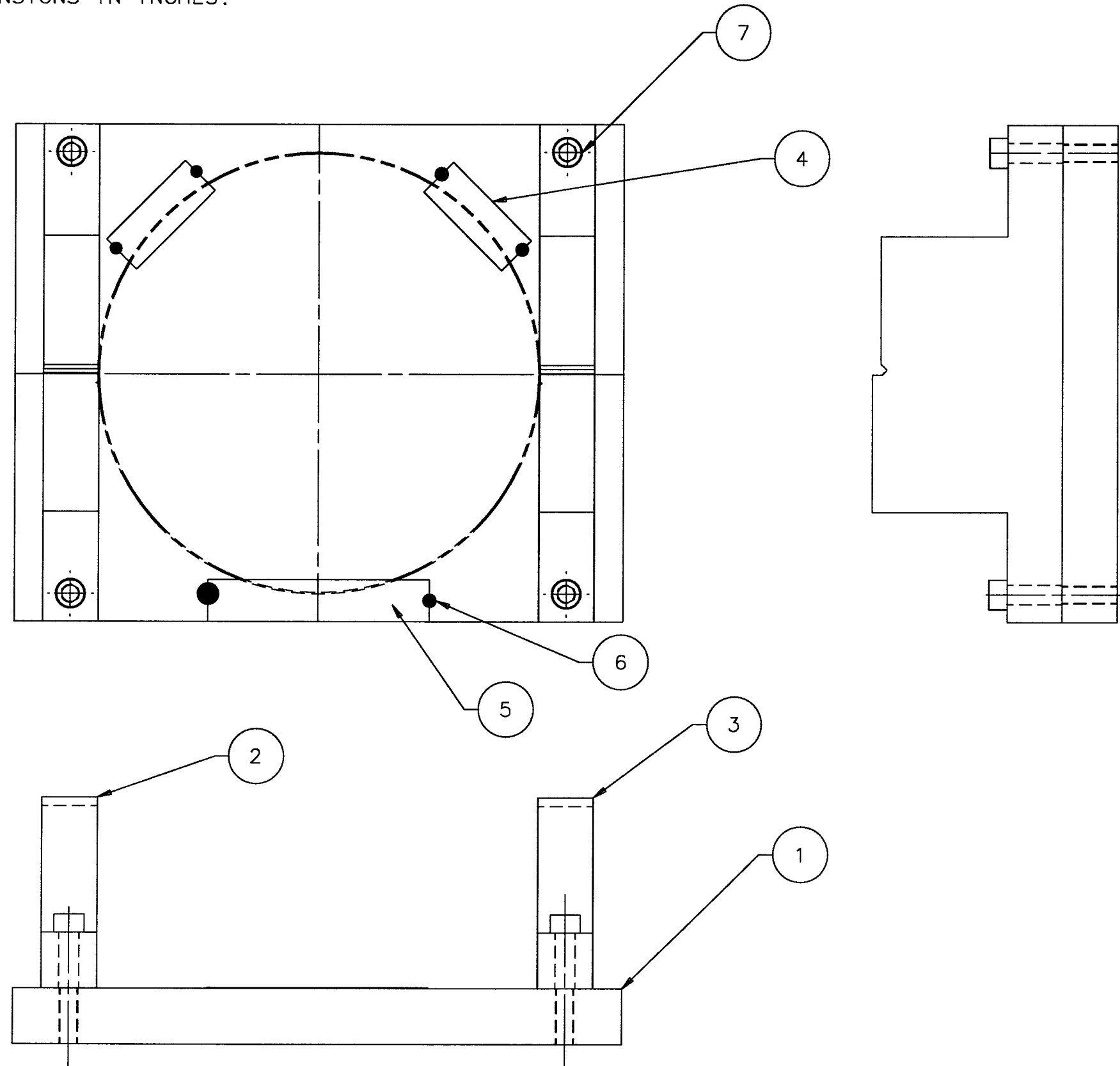


NOTES:

1. DIMENSIONS IN INCHES.



- ① D950156-00 BASE PLATE
- ② D950157-00 LEFT BLOCK
- ③ D950158-00 RIGHT BLOCK
- ④ .38x1.00x.0075 KAPTON, 2 PL
- ⑤ .38x2.00x.0075 KAPTON
- ⑥ ADHESIVE
- ⑦ #8-32x.75 SHCS, 4 PL

FIXTURE, GUIDE RODS AND  
SIDE ACTUATORS, BONDING  
VERTEX TEST MASS  
30 MINUTE WEDGE  
4"φ X 3.5" THICK

ASSEMBLY

D950154-01