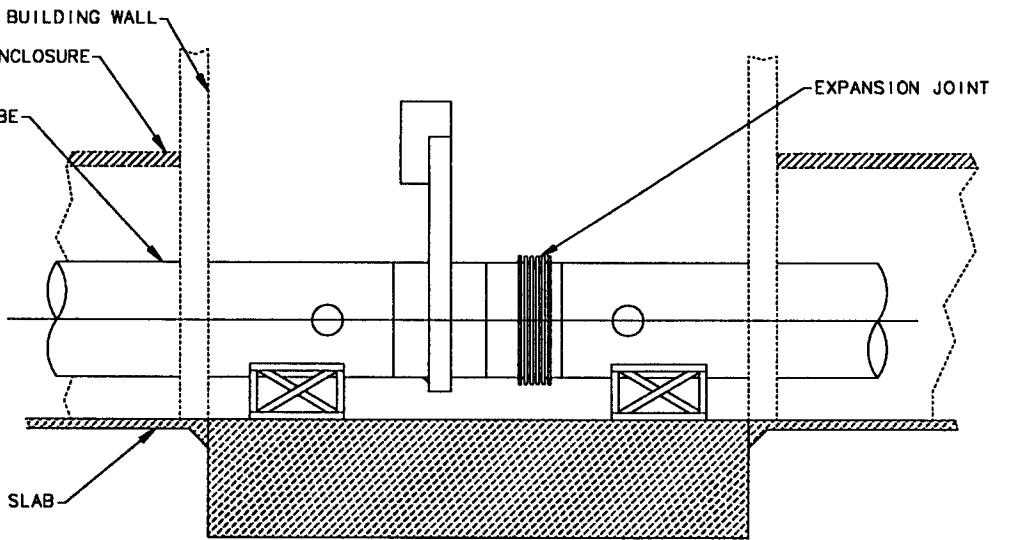
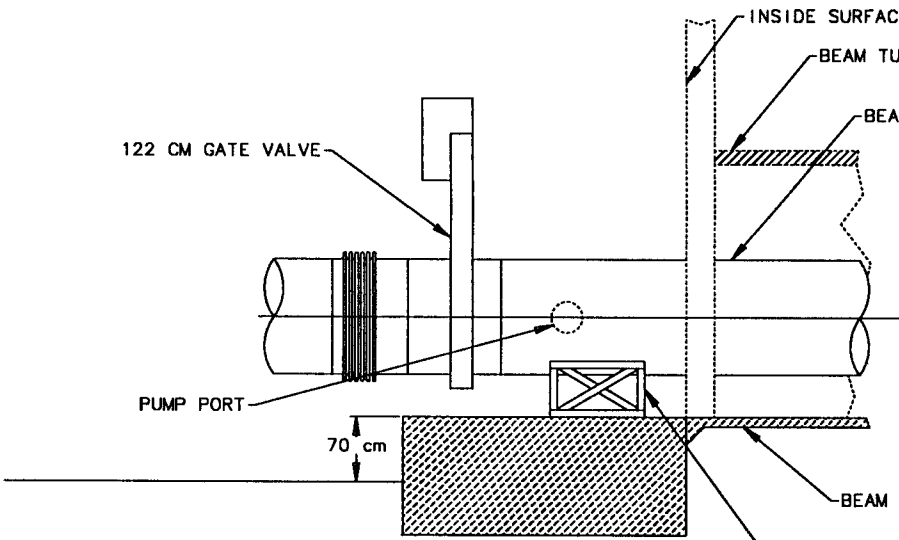


CENTER OF ANCHOR PAD (TYPICAL)



TYPICAL TERMINATION FOUNDATION

TERMINATION FOUNDATION AT MID POINT JOINT

- 8 REQUIRED AT HANFORD SITE:
 - 2 AT CORNER STATION
 - 2 AT EACH MID STATION
 - 1 AT EACH END STATION
- 4 REQUIRED AT LIVINGSTON SITE:
 - 2 AT CORNER STATION
 - 1 AT EACH END STATION

- 2 REQUIRED AT LIVINGSTON SITE:
 - 1 AT EACH MID POINT PUMP STATION

FOUNDATION LOADS AT ANCHORS (KG)

DIRECTION	TOTAL	DEAD	VACUUM	SEISMIC	THERMAL	WIND
VERTICAL	3600	3600	0	0	0	0
AXIAL	18,200	0	14,788	854	2558	0
LATERAL	1400	0	0	696	0	704

ALL FEDERAL ACQUISITION OF INFORMATION IS SUBJECT TO THE NATIONAL ARCHIVES AND RECORDS ADMINISTRATION

LIGO PROJECT

DATE: 7/27/95
 DRAWN BY: L. JONES
 CHECKED BY:
 SCALE:
 APPD:
 TITLE: BEAM TUBE TERMINATION FOUNDATIONS
 SHEET: NTS
 NO: 0950093 1-1 A