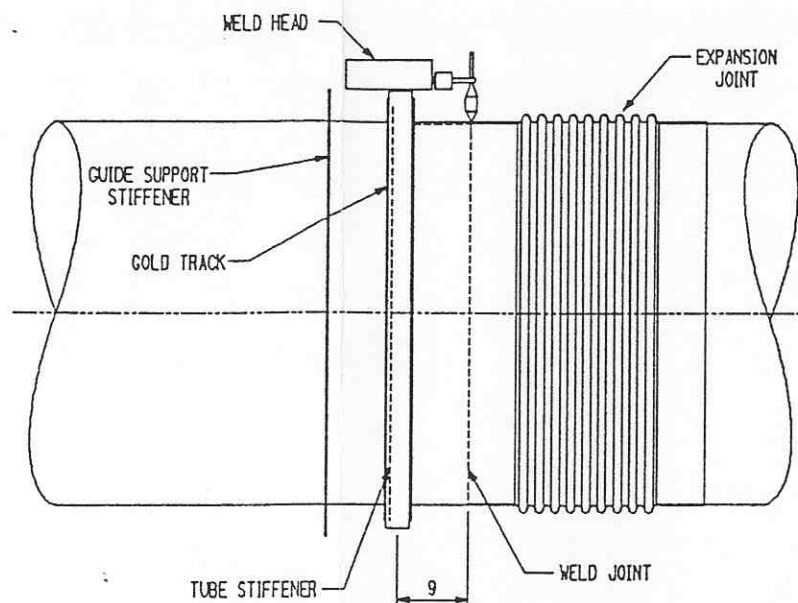
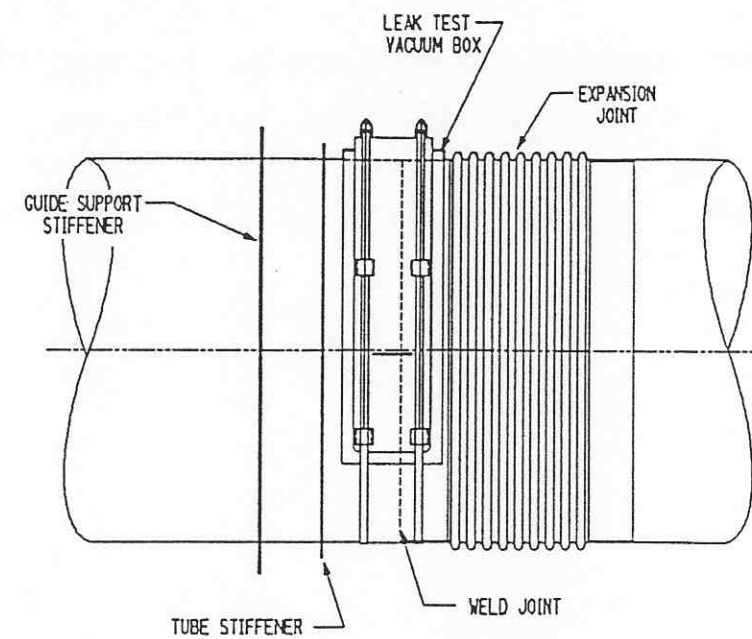


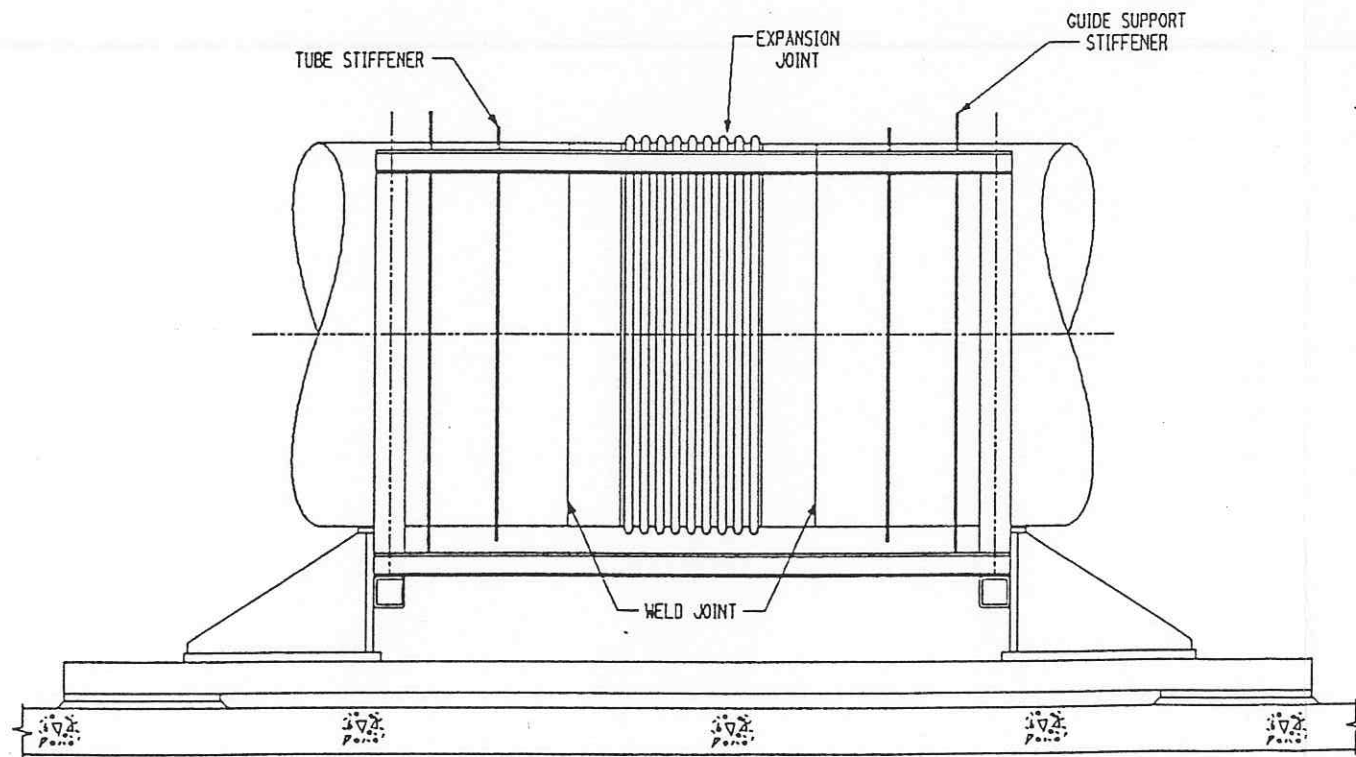
FIT-UP ARRANGEMENT



WELDING ARRANGEMENT



LEAK TEST ARRANGEMENT



FINAL POSITION GUIDED SUPPORT

| | |
|-------------------|----------------------------------|
| Date Received: | LIGO- D950086-02-B |
| 11/10/95 | Contractor #: CBI ER-134, Rev. 2 |
| TIM #: | LIGO- |
| Date: / / | Approved: |
| TDM #: | LIGO- |
| Date: / / | Approved: |
| Gen'l Transmittal | LIGO- |
| Date: / / | Approved: |

APPROVED

M. Jellalian 11/10/95

J. Jones 11/10/95

NOTES:

- GUIDE SUPPORTS ARE INSTALLED AFTER WELDING AND LEAK TESTING ARE COMPLETE

CAD FILE 302134.DGN

INDICATES CHANGE FROM PREVIOUS ISSUE

| | |
|--|--------------------------------|
| Supplier's/Purchaser's No. | |
| CBI | |
| LIGO PROJECT | |
| FIT-UP WELDING AND LEAK TESTING CONFIGURATIONS AT GUIDE SUPPORTS | |
| Customer's No. | Contract No. |
| By <u>DL</u> Chkd <u> </u> Date <u>2-11-94</u> | 930212 |
| <u>J.J. RINGELSTETTER</u> Engineering Supervisor | Dwg. ER134 Rev. 2 Sheet - 2 |
| LIGO - D950086-02-B | |