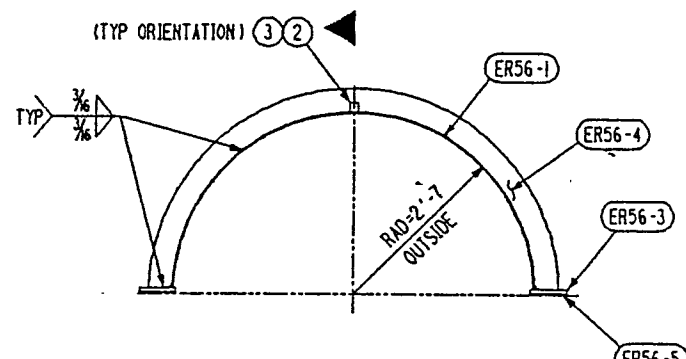
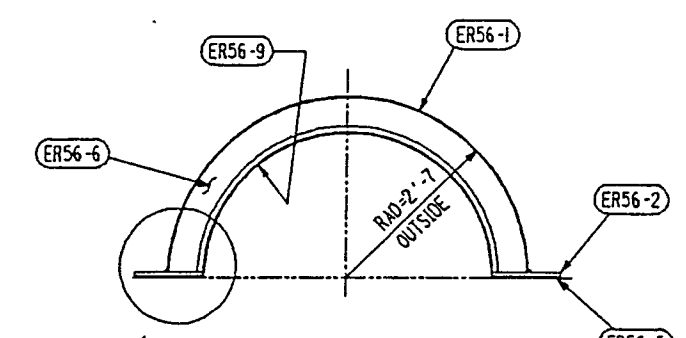


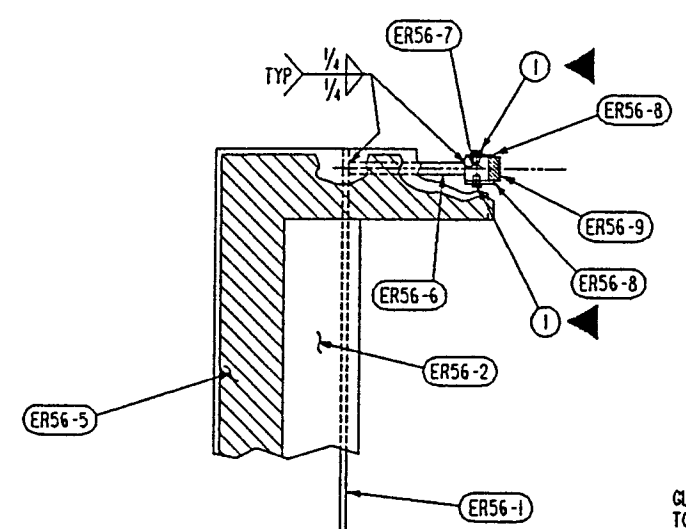
SHP PC	MARK	ASSY PC	DESCRIPTION	LENGTH		SPEC	EST WEIGHT
				FT	INCHES		
3	ER54-A		STANDARD TOP HOOD ASSEMBLY				23769
	ER56-1	18	PLATE SK X 1/4 (ROLL TO 2'-6 1/4 RAD)	10	9 1/32	A36	15750
	ER56-2	12	PLATE 3/4 X SK (CF 80 1/2 X 16'-5 1/4 W/PC3 C4)	16	5	A36	3189
	ER56-3	12	PLATE 3/4 X SK (CF 80 1/2 X 16'-5 1/4 W/PC2 C4)	15	10 1/4	A36	3060
	ER56-4	36	PLATE 4 X 1/4 X SK	FIN	8 5/8	A36	1020
				SHR	11 5/8		
	ER56-5	6	RUBBER 1/4 X SK (55-65 DUROMETER)	64	7	BUTYL	174
	ER56-6	6	PLATE 1/2 X SK (CF 31 1/4 X 5'-2 1/2 C1)			A36	354
	ER56-7	6	BAR 1" X SK ROLL	FIN	6 5/4	A36	132
				SHR	9 5/4		
	ER56-8	24	BAR 1/8 X SK	FIN	3 2 1/8	A36	63
				SHR	6 2 1/8		
	ER56-9	6	RUBBER 1" X 1/2 (55-65 DUROMETER) BBE	6	6 3/32	BUTYL	15
	ER54-1	72	CAP SCREW 1/4 DIA HEX HEAD	0	3/8	SAE GR 2	3
	ER54-2	3	SMALL FLANGE LONG DN 40 ISO-KF	0	1 7/8	CARB STL	6
			"BALZERS" NR. BP 217 216 (70 MM-LENGTH) OR EQUAL				
	ER54-3	3	1/4 DIA NPT PIPE COUPLING	0	1 3/8	FORGED STL	3



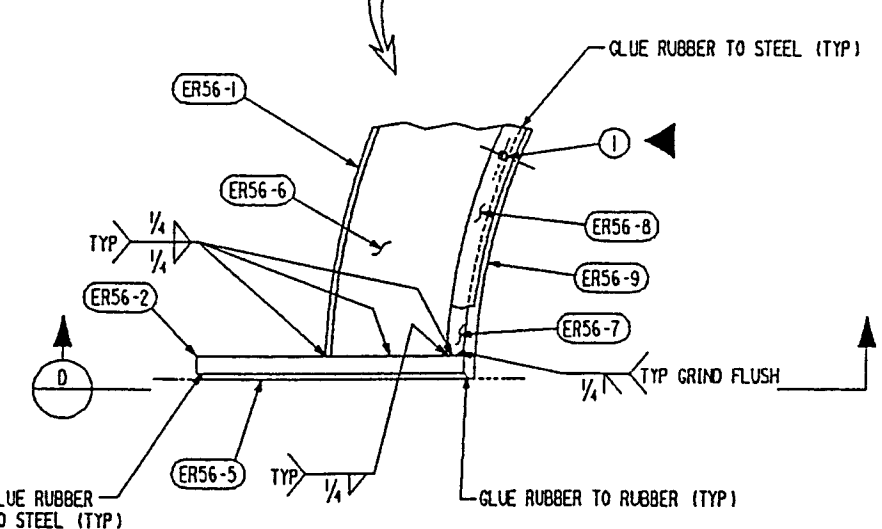
SECTION B



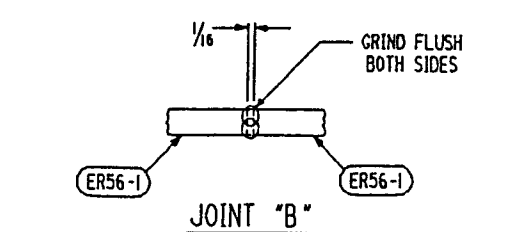
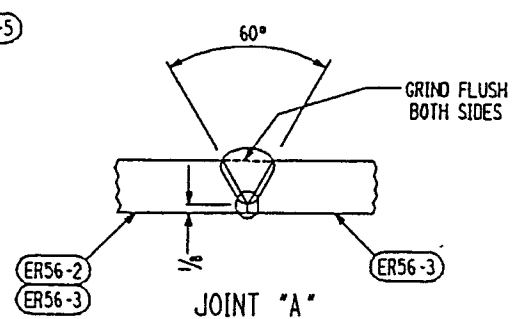
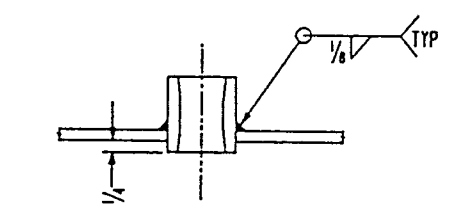
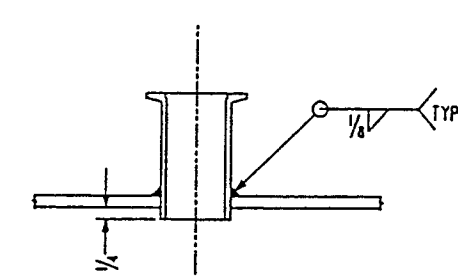
SECTION C



SECTION D



SECTION A



APPROVED

M. Jellison 11/10/95
CBI / DATE

J. Jones 11/10/95
CALTECH / DATE

- NOTES:
- WORK THIS DWG WITH DWG ER-56.
 - "C"-CLAMPS AND GLUE SUPPLY SEE DWG ER-55.

Supplier's/Purchaser's No. _____

CBI

LIGO PROJECT
LEAK TEST ARRANGEMENT
STANDARD HOOD TEST ENCLOSURE
TOP SECTION

Customer's No. _____ Contract No. 930212ER

By BSA Chkd RDS Date 3-4-94
J. L. RINGELSTETTER Dwg. ER-54 Rev. 2
Engineering Supervisor Sheet - 2

LIGO-D950054-02-B

30212054.DGN

Date: 11/10/95	Contractor: CBI	TIM#: LIGO-	TDM: LIGO-	Gen'l Transmittal: LIGO-
Date: / /	Approved: / /	Date: / /	Approved: / /	Date: / /

INDICATES CHANGE FROM PREVIOUS ISSUE