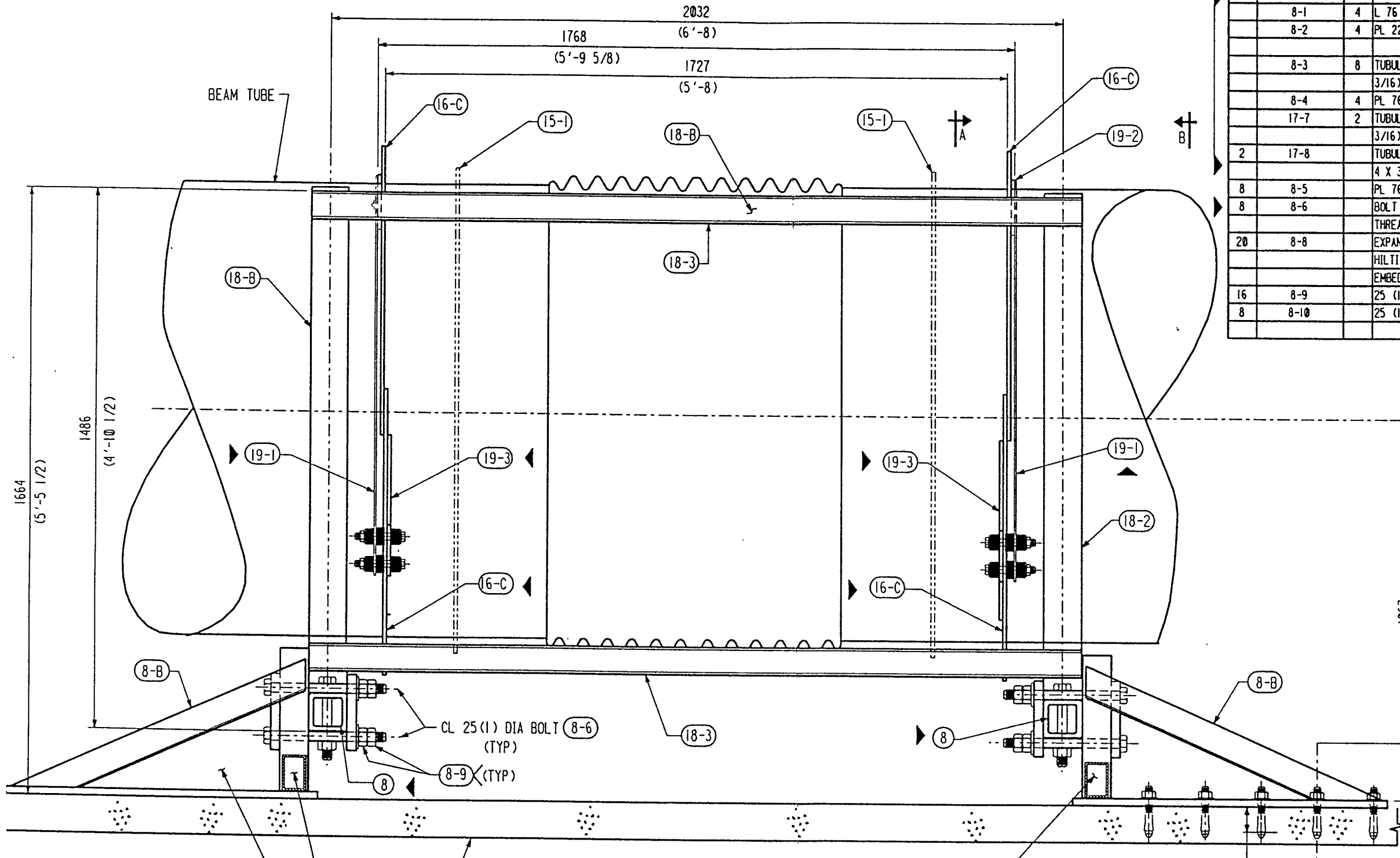


LIGO-0960625-00-V
 Date: 3/29/96
 Approved: [Signature]
 LIGO-0960625-00-V
 Date: 3/29/96
 Approved: [Signature]
 LIGO-0960625-00-V
 Date: 3/29/96
 Approved: [Signature]

SHP PC	MARK	ASSM PC	DESCRIPTION	LENGTH MM	SPEC
2	8-8		GUIDED SUPPORT LUGS ASSY		
	8-1	4	L 76 X 76 X 5 X SK (L 3 X 3 X 3/16)	875	A36
	8-2	4	PL 222 X 19 THK (8 3/4 X 3/4) W/HOLE	838	A36
				(2'-9)	
	8-3	8	TUBULAR STEEL 76 X 50 X 5 (3 X 2 X 3/16)	375	A500 Gr B
				1'-2 3/4	
	8-4	4	PL 76 X 6 (3 X 1/4)	127 (5)	A36
	17-7	2	TUBULAR STEEL 76 X 50 X 5 (3 X 2 X 3/16)	835	A500 Gr B
				2'-8 7/8	
2	17-8		TUBULAR STEEL 102 X 102 X 10 (4 X 4 X 3/8) W/HOLES	1880	A500 Gr B
				(6'-2)	
8	8-5		PL 76 X 25 THK (3 X 1) W/HOLES	178 (7)	A36
8	8-6		BOLT 25 (1) DIA HVY HEX	279	A325
			THREAD LENGTH = 114 (4 1/2)	11	
20	8-8		EXPANSION ANCHORS 15 (5/8) DIA	120	CS
			HILTI KB11 58-434 W/70 (2 3/4)	(4 3/4)	
			EMBEDMENT DEPTH OR ED.		
16	8-9		25 (1) HVY HEX NUT		A325
8	8-10		25 (1) WASHER		CS



NOTES ON INSULATION OF BEAM TUBE
 1. THE BEAM TUBE MUST BE FULLY COVERED BY AT LEAST 4 INCHES OF INSULATION HAVING THERMAL CONDUCTIVITY, K, AT 284°F LESS THAN OR EQUAL TO 0.54 BTU IN/HR FT² °F, FOR AT LEAST 36 INCHES ON EITHER SIDE OF SUPPORT RING (16-1)

CL 15 (5/8) DIA EXPANSION ANCHORS. HILTI KB 11 58-434 (SEE DWG #008 FOR DETAILS) (SEE THIS DWG #017 FOR BILLING) (TYP)

SUPPORT LUG ASSEMBLY W/BOLTING ASSEMBLY (SEE DWG #008 FOR DETAILS) (SEE THIS DWG #017 FOR BILLING) (TYP)

APPROVED
 M. Jellalian 4/10/95
 CBI DATE
 J. Jones 11/10/95
 CALTECH DATE

ELEVATION

SEE DWG #19

SEE DWG #18

- NOTES**
1. WORK THIS DWG WITH DWG #008, #018 AND #019.
 2. BILLED FOR ONE (1) GUIDED SUPPORT. TOTAL OF 400 GUIDED SUPPORTS REQD.

INDICATES CHANGE FROM PREVIOUS ISSUE

REMOVE CBI PROPRIETARY NOTE. ADD TO ELEVATION.		CBI		SUPPLIER'S / PURCHASER'S NO
ELEVATION BEAM TUBE GUIDED SUPPORT				
CUSTOMER'S NO BY WAW CHKD DET DATE 3-14-94		CONTRACT NO		
ENGINEERING ASSIGNED		DWG 017 SHT	REV 3	
LIGO-D950042-03-B				