

NOTES:

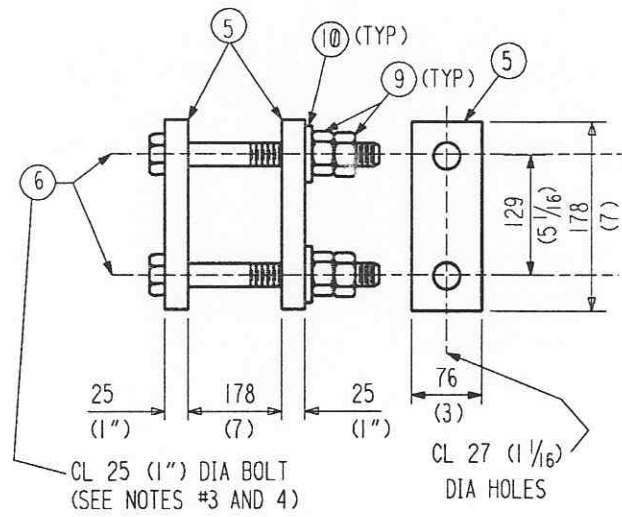
1. WORK THIS DWG WITH DWG #6 AND 7.
2. BILLED FOR ONE (1) FIXED SUPPORT, TOTAL OF (16) FIXED SUPPORTS NEAR TERM, AND (376) FIXED SUPPORTS AWAY FROM TERMINATION REQUIRED.
3. LUBRICATE BOLT THREADS AND BEARING SURFACE OF NUTS WITH LOCTITE NICKEL ANTI-SIEZE 771.
4. TIGHTEN BOLTS USING TURN OF THE NUT METHOD (2/3 TURN) PER RCSC SPEC. FOR STRUCTURAL JOINTS (11/13/85) IN AISC. SNUG TIGHTEN ALL BOLTS IN A SYSTEMATIC MANNER AS NECESSARY UNTIL ALL BOLTS ARE SIMULTANEOUSLY SNUG TIGHT. SNUG TIGHT IS DEFINED AS A FEW IMPACTS OF AN IMPACT WRENCH OR THE FULL EFFORT OF A MAN USING AN ORDINARY SPUD WRENCH. AFTER ALL BOLTS ARE SNUG, THE BOLTS SHALL BE TIGHTENED AN ADDITIONAL 2/3 OF A TURN PAST SNUG.
5. PROVIDE TUBULAR MEMEBERS (THAT ARE CLOSED ON THE ENDS) WITH 6 (1/4) DIA. HOLES OR 13 (1/2) DIA. RATHOLES ON ANY TWO OPPOSITE SIDES AT TUBE ENDS AS REQUIRED FOR GALVANIZING.

▶ INDICATES CHANGE FROM PREVIOUS ISSUE

SHP PC	MARK	ASSM PC	DESCRIPTION	LENGTH MM	SPEC	ID
1	8-A		FIXED SUPPORT LUG (AWAY FROM TERM.)		M4	
	8-1 R/L	2	L 76 X 76 X 5 X SK	1099	A36	C
			(3 X 3 X 3/16 X 3'-7 9/32)			
	8-2 R/L	2	BAR 127 X 13 (5 X 1/2 X 1'-8 1/2 LONG) W/ HOLES	521	A36	C
	8-3	4	TUBE 76 X 50 X 5 (3 X 2 X 3/16 X 1'-3 1/8)	384	*	C
	8-4	2	PL 76 X 6 (3 X 1/4 X 5 1/16)	129	A36	C
	8-7	2	PL SK X 13 (1/2)		A36	C
	8-11	1	TUBE 76 X 50 X 5 (3 X 2 X 3/16 X 2'-2 15/16)	684	*	C
	8-14 R/L	2	BAR 127 X 13 (5 X 1/2) W/ HOLES	279 (11)	A36	C
	8-15	2	L 51 X 51 X 6 (2 X 2 X 1/4 X 3'-0)	914	A36	C
1	8-B		FIXED SUPPORT LUG (NEAR TERMINATION)		M4	
	8-2 R/L	2	BAR 127 X 13 (5 X 1/2 X 1'-8 1/2 LONG) W/ HOLES	521	A36	C
				(5 1/16)		
	8-4	2	PL 76 X 6 (3 X 1/4)	129	A36	C
				(5 1/16)		
	8-7	2	PL SK X 13 (1/2)		A36	C
	8-11	1	TUBE 76 X 50 X 5 (3 X 2 X 3/16 X 2'-2 15/16)	684	*	C
	8-12 R/L	2	L 76 X 76 X 7 X SK	1099	A36	C
			(3 X 3 X 1/4 X 3'-7 9/32)			
	8-13	4	TUBE 76 X 50 X 7 (3 X 2 X 1/4 X 1'-3 1/8)	384	*	C
	8-14 R/L	2	BAR 127 X 13 (5 X 1/2) W/ HOLES	279 (11)	A36	C
	8-15	2	L 51 X 51 X 6 (2 X 2 X 1/4 X 3'-0)	914	A36	C
4	8-5		PL 76 X 25 THK (3 X 1) W/HOLES	178 (7)	A36	C
4	8-6		BOLT 25 (1") DIA HVY HEX	292	***	Ac
			THREAD LENGTH = 127 (5)	(11 1/2)		
8	8-8		EXPANSION ANCHORS 15 (5/8) DIA	152 (6)	CS ZINC-PLATED	C
			HILTI KB II 58-6 W/ 102 (4)			
			EMBEDMENT DEPTH OR EQ.			
8	8-9		NUT 25 (1") DIA HVY HEX		**	Ac
4	8-10		WASHER 25 (1") DIA		F436	Ac
			* = A500 GR.B			
			** = A563 - C3 OR DH3 (NOT GALV.)			
			*** = A325 TYPE 3 (NOT GALV.)			
			M4 = SEE SPEC C-SUPT-1			

APPROVED	
<i>M. Tellalian</i>	<i>9-13-96</i>
CBI	DATE
<i>L. Jones</i>	<i>9/23/96</i>
CALTECH	DATE

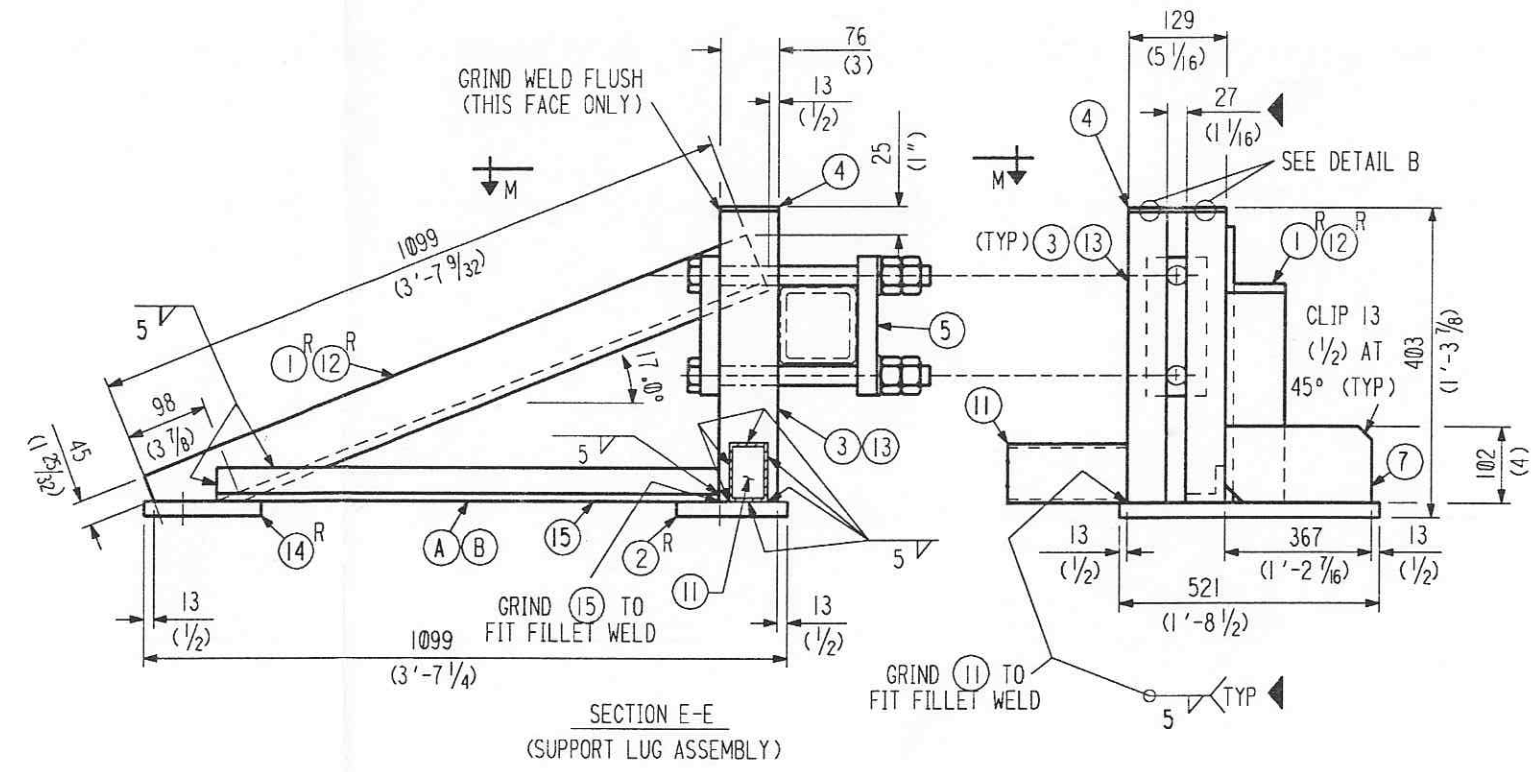
BY: DTR DATE: 9-13-96		CORRECTED VIEW OF ASSY. A & B ADDED DETAILS TO NOTE 4.	
BY: BTR DATE: 6-28-96		ADDED MATERIAL ID FOR PC. 9. REV. SPEC. FOR PC. 10.	
BY: M.L. DATE: 5-18-96		REV. ENTIRE DRAWING	
REVISIONS		REMARKS	
		CBI	
		LIGO BEAM TUBE HANFORD, WA AND LIVINGSTON, LA	
		BEAM TUBE FIXED SUPPORT SUPPORT LUG ASS'Y & SECTION DETAILS	
CUSTOMER'S NO		CONTRACT NO	
BY: WAW CHKD: M.L. DET: M.L. DATE: 3-8-94		953571	
ENGINEERING ASSIGNED		DWG: 8	REV: 9
		SHT: 1	
<i>LIQO-D950037-09-B</i>			



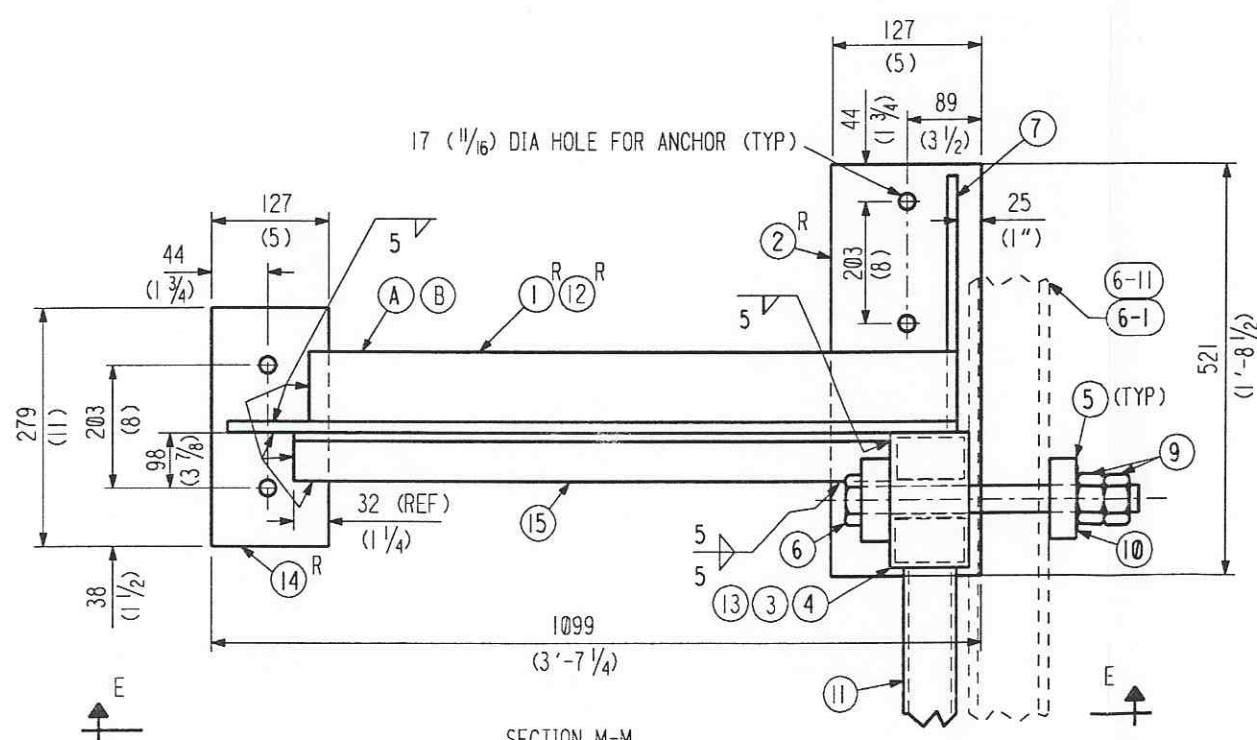
CL 25 (1") DIA BOLT
(SEE NOTES #3 AND 4)

CL 27 (1 1/16")
DIA HOLES

BOLTING ASSEMBLY



**SECTION E-E
(SUPPORT LUG ASSEMBLY)**



SECTION M-M

APPROVED	
<i>M. Tellalian</i>	9-13-96
CBI	DATE
<i>J. Jones</i>	9/23/96
CALTECH	DATE

CBI		SUPPLIER'S / PURCHASER'S NO	
LIGO BEAM TUBE HANFORD, WA AND LIVINGSTON, LA			
BEAM TUBE FIXED SUPPORT SUPPORT LUG ASS'Y & SECTION DETAILS			
CUSTOMER'S NO		CONTRACT NO	
BY WAW CHKD DET DATE 3-8-94		953571	
M.L. TELLALIAN		DWG 8	REV 9
ENGINEERING ASSIGNED		SHT 2	
REVISIONS			
BY	DATE	REVISIONS	REMARKS
DTR	6-28-96	1	ADDED DIM. BETWEEN BOTH 3'S AND 13'S. ADDED WELD OF 3 & 13 TO PC. 2.
BY	DATE	REVISIONS	REMARKS
CHKD	6-28-96	1	ADDED ENTIRE SHEET
BY	DATE	REVISIONS	REMARKS
DTR	5-8-96	1	

55710208.DGN

INDICATES CHANGE FROM PREVIOUS ISSUE