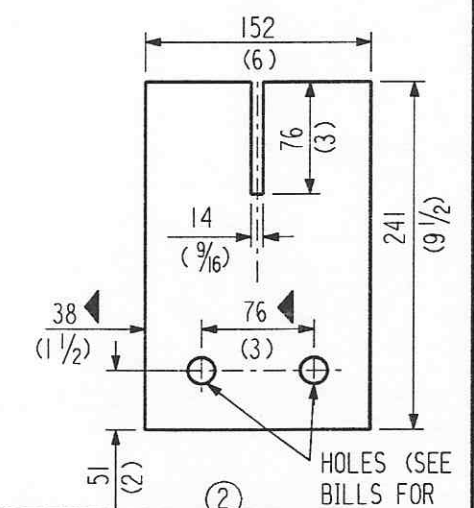
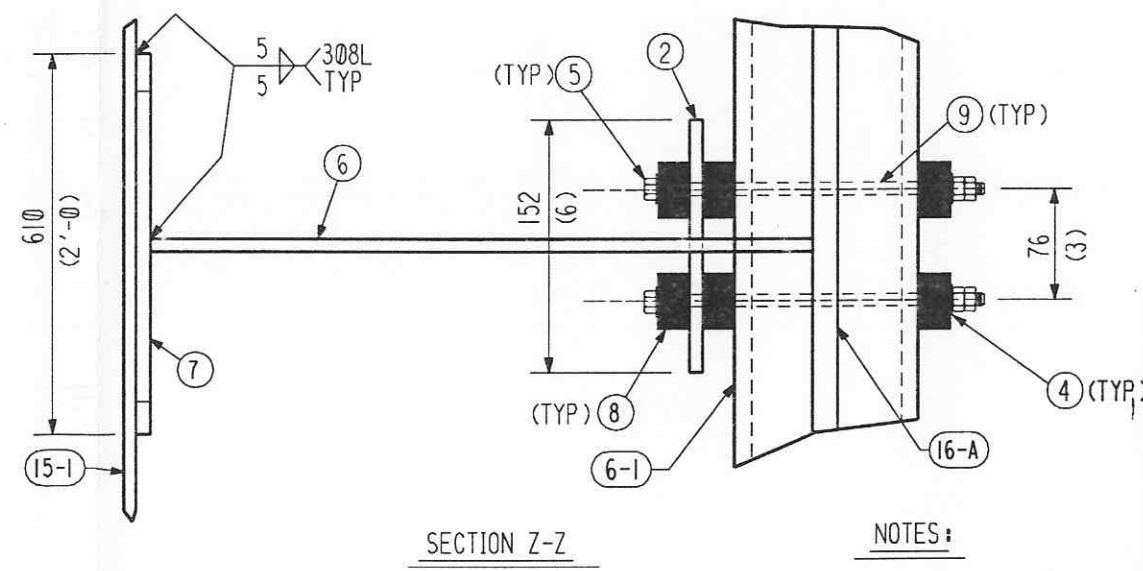
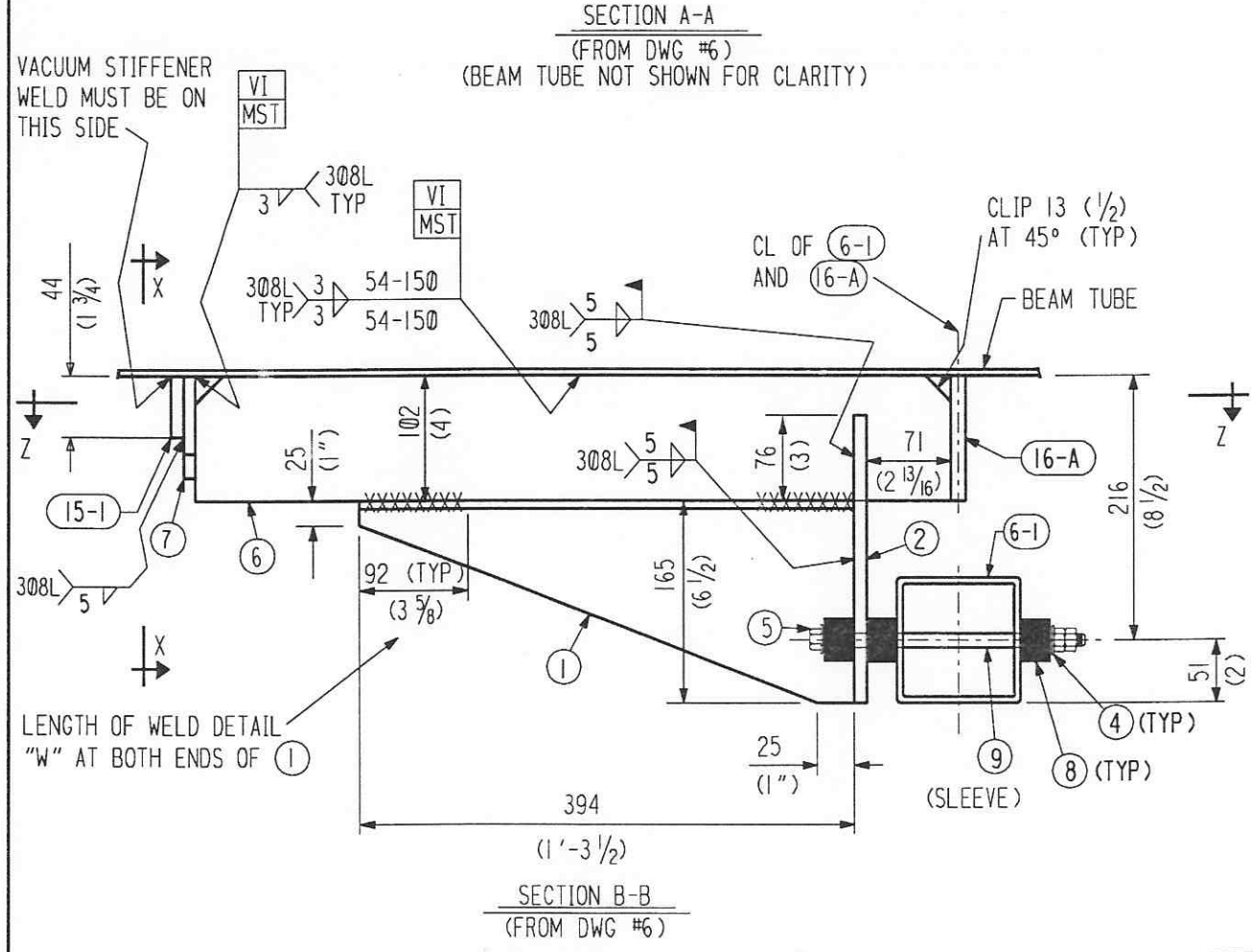
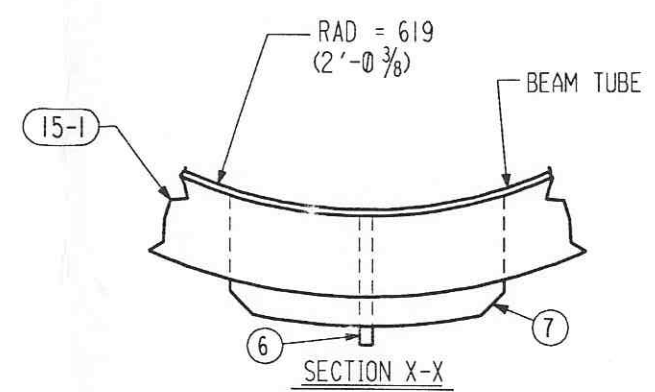


SHIP PC	MARK	ASSM PC	DESCRIPTION	LENGTH MM	SPEC	D
			FIXED SUPPORT (AWAY FROM TERM.)			
1	7-1		PL SK X 13 (1/2)		***	C
1	7-2		PL SK X 13 (1/2) W/ 21 (13/16)		***	C
			DIA HOLES			
4	7-4		WASHER 16 (5/8) DIA		F436	Ac
2	7-5		BOLT 16 (5/8) DIA HVY HEX W/ 2 NUTS	241	*	Ac
				(9 1/2)		
1	7-6		PL 102 X 13 (4 X 1/2 X 2'-5 9/16)	751	***	C
1	7-7		PL SK X 5 (3/16)		***	C
6	7-8		MICARTA BLOCK 44 X 44 X 25 (1 3/4 X 1 3/4 X 1) W/ 22 (7/8) DIA HOLE		GRADE G11	C
2	7-9		INSULATING SLEEVE 16 (5/8) ID X 1/32 THK (FROM F.H. MALONEY CO.)	178 (7)	MYLAR	C
			* = A325 TYPE 3 (NOT GALV.)			
			*** = SA240 TP304L			



APPROVED
M. Tellalian 9-13-96
 CBI DATE
J. Jones 9/23/96
 CALTECH DATE

- NOTES:
 1. WORK THIS DRAWING WITH DWG. #6 AND #8.
 2. DETAILED AND BILLED FOR ONE (1) FIXED SUPPORT. TOTAL OF (16) FIXED SUPPORTS (NEAR TERMINATION) AND (376) FIXED SUPPORTS (AWAY FROM TERMINATION) REQUIRED.

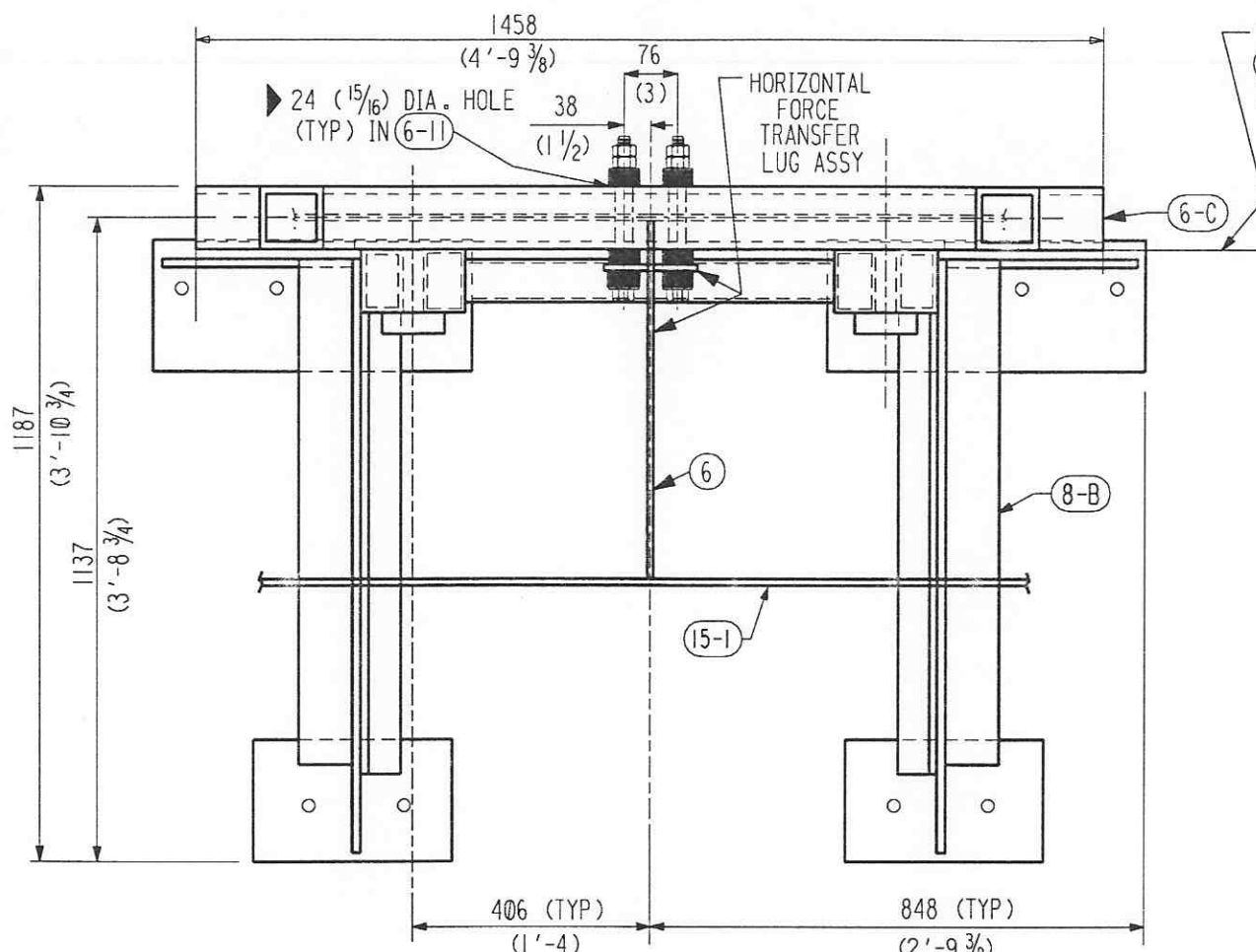


INDICATES CHANGE FROM PREVIOUS ISSUE

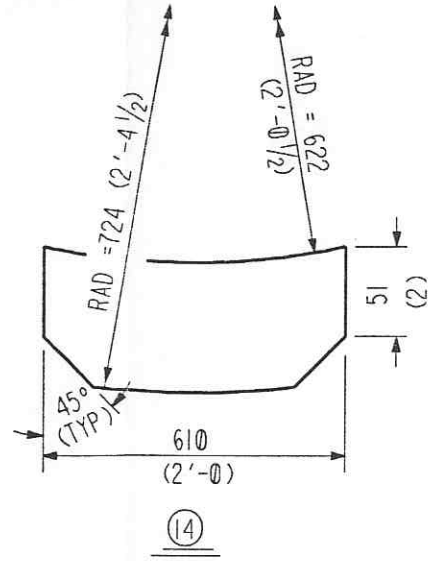
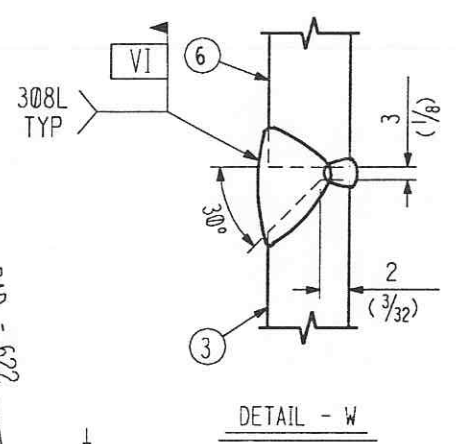
BY	CHKD	DATE	REVISED ENTIRE DRAWING	REVISIONS	REMARKS
6	DIR	5/10/96	CLARIFY HOLE DIA. IN PC. 6-1.		
5	EST	5/10/96	CLARIFY HOLE DIA. IN PC. 6-1.		
4	DIR	5/10/96	REV. DIM. OF BOLT HOLES IN PC. 2.		
3	DIR	5/10/96	REVISED BILLING AND ADDED DOUBLE NUTS TO PC. 5		
2	DIR	6-28-96			
1	CHKD	6-28-96			

CBI		SUPPLIER'S / PURCHASER'S NO	
LIGO BEAM TUBE HANFORD, WA AND LIVINGSTON, LA			
BEAM TUBE FIXED SUPPORT PLAN VIEW & DETAILS (AWAY FROM TERM.)			
CUSTOMER'S NO		CONTRACT NO	
BY WAW CHKD DET DATE 3-7-94		953571	
M.L. TELLALIAN		DWG 7	REV 8
ENGINEERING ASSIGNED		SHT 1	
LIGO-D950036-08-B			

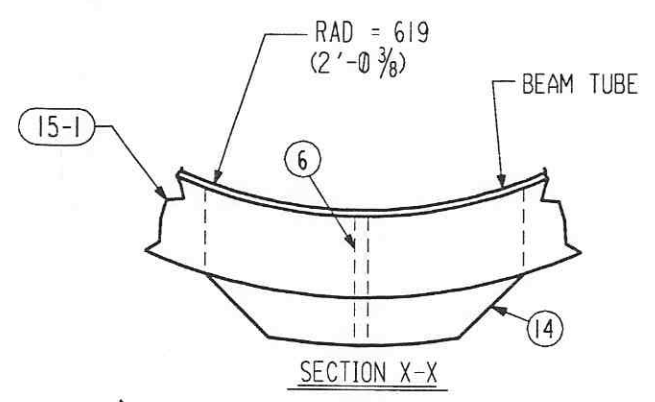
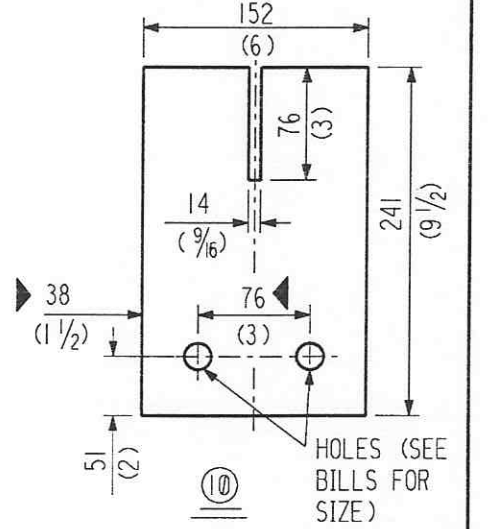
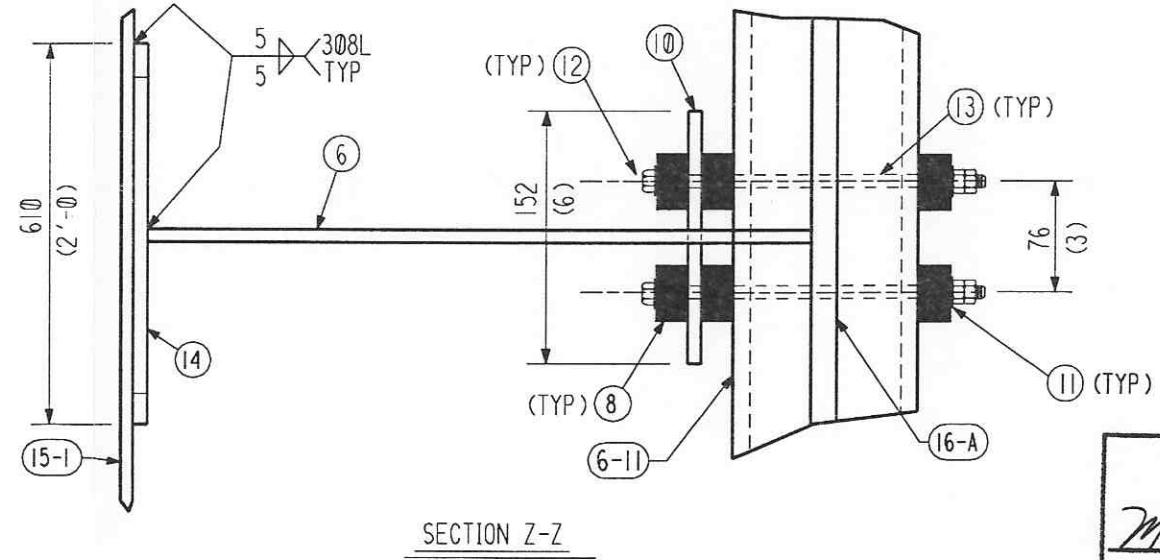
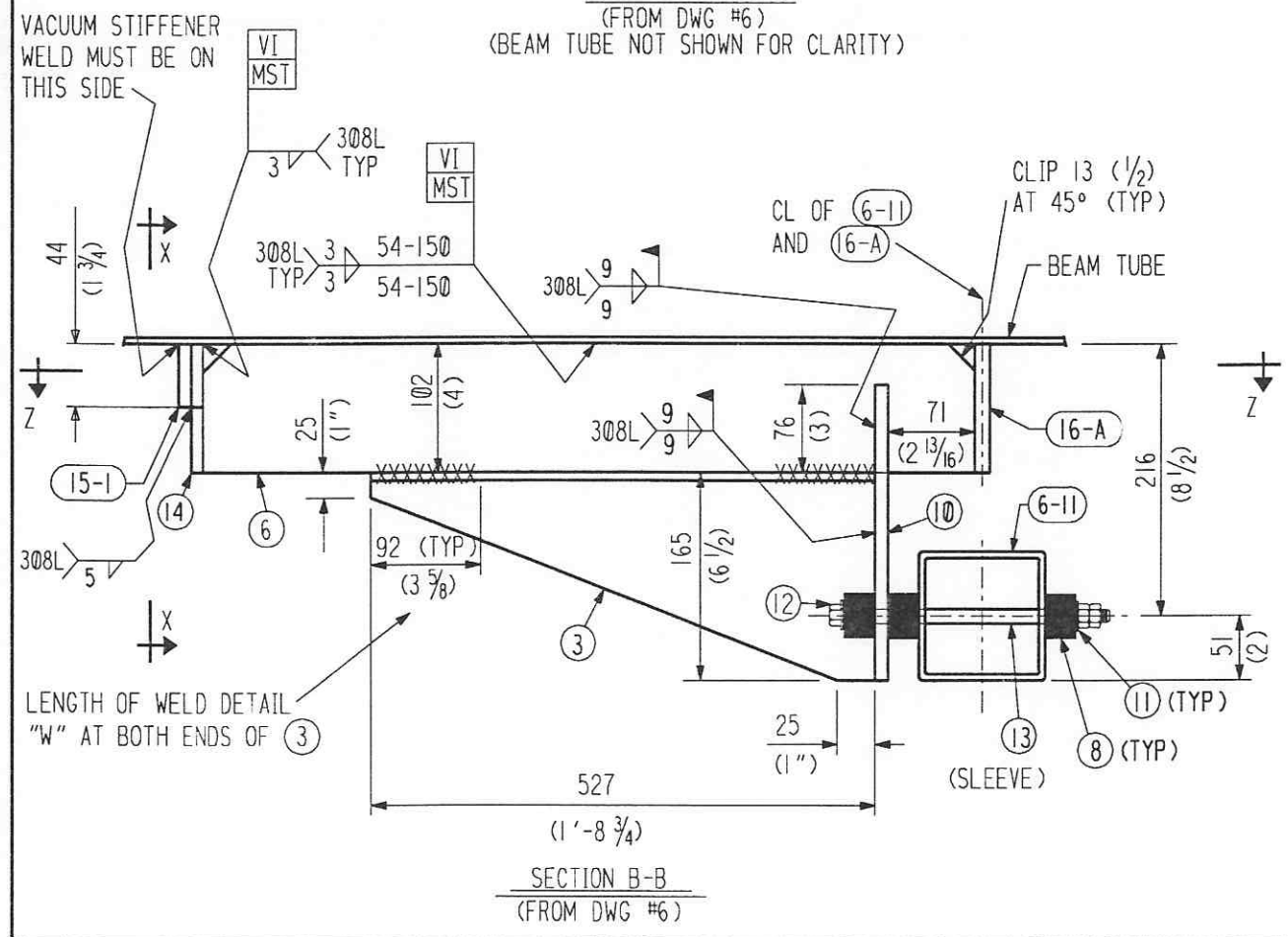
55710107.DGN



THIS FACE OF ALL PC. (8-13) WILL BE IN SAME PLANE WITHIN 3 (1/8)



SHIP PC	MARK	ASSM PC	DESCRIPTION	LENGTH MM	SPEC	ID
			FIXED SUPPORT (NEAR TERMINATION)			
1	7-3		PL SK X 13 (1/2)		***	C
1	7-6		PL 102 X 13 (4 X 1/2 X 2'-5 9/16)	751	***	C
6	7-8		MICARTA BLOCK 44 X 44 X 25 (1 3/4 X 1 3/4 X 1) W/ 22 (7/8) DIA HOLE		GRADE G11	C
1	7-10		PL SK X 19 (3/4) W/ 24 (15/16) DIA HOLES		***	C
4	7-11		WASHER 19 (3/4) DIA		F436	Ac
2	7-12		BOLT 19 (3/4) DIA HVY HEX W/ 2 NUTS	254 (10)	*	Ac
2	7-13		INSULATING SLEEVE 19 (3/4) ID X 1/32 THK (FROM F.H. MALONEY CO.)	178 (7)	MYLAR	C
1	7-14		PL SK X 10 (3/8)		***	C
			* = A325 TYPE 3 (NOT GALV.)			
			*** = SA240 TP304L			
			*** = SA240 TP304L			



APPROVED
M. Tellalian 9-13-96
 CBI DATE
S. Jones 9/23/96
 CALTECH DATE

REVISIONS		REMARKS	
BY	DATE	REVISIONS	REMARKS
CHKD	5-18-96	1	ADDED ENTIRE SH.
DATE		2	CLARIFY HOLE DIA. IN PC. 6-11.
CHKD		3	REV. DIM. OF BOLT HOLES IN
DATE		4	REV. DIM. OF BOLT HOLES IN
CHKD		5	REVISED BILLING AND ADDED
DATE		6	DOUBLE NUTS TO PC. 12.

CUSTOMER'S NO		CONTRACT NO	
BY WAW CHKD DET DATE 3-7-94		953571	
M.J. TELLALIAN		DWG 7	
ENGINEERING ASSIGNED		SHT 2	
		REV 8	

55710207.DGN

LIQO-D950036-08-B

INDICATES CHANGE FROM PREVIOUS ISSUE