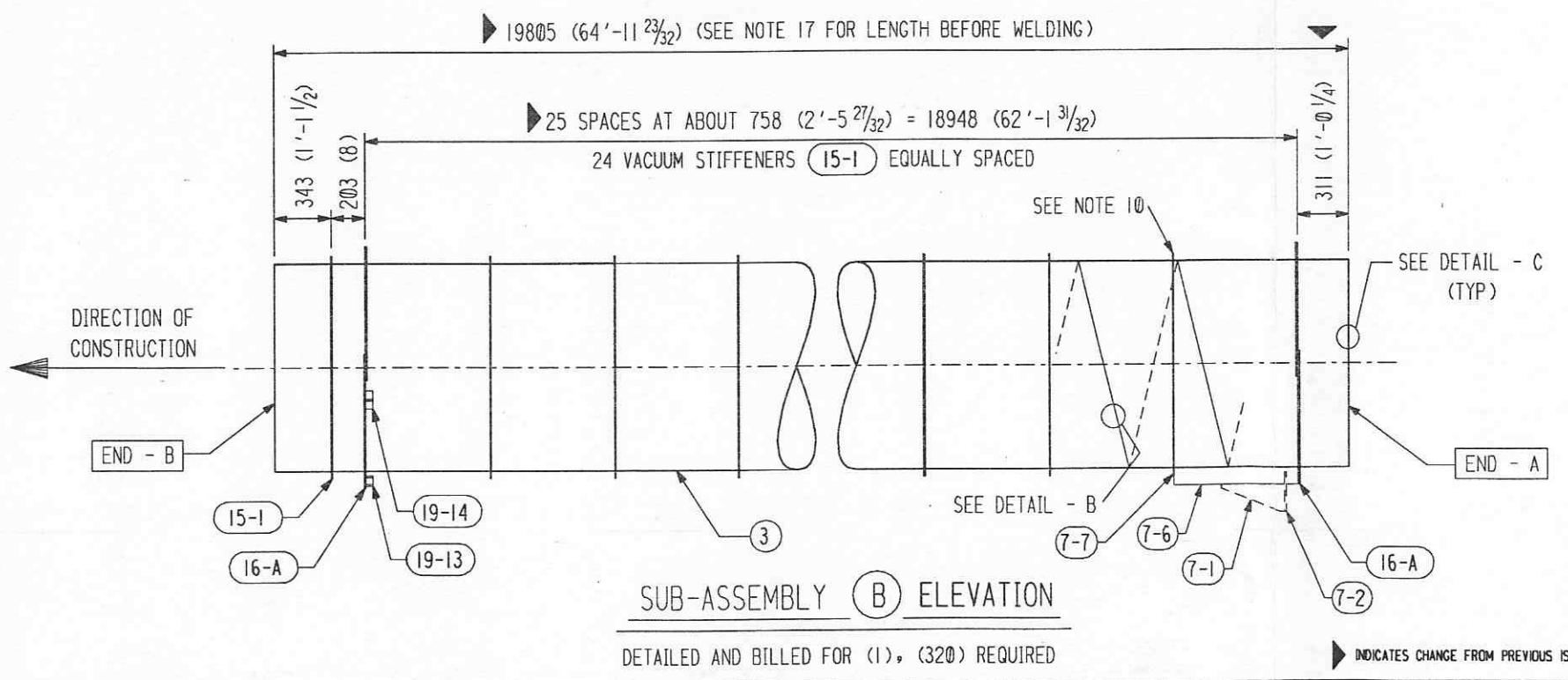
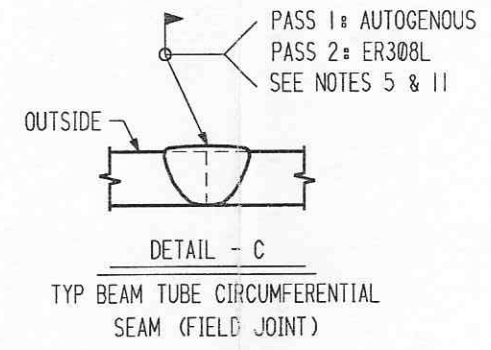
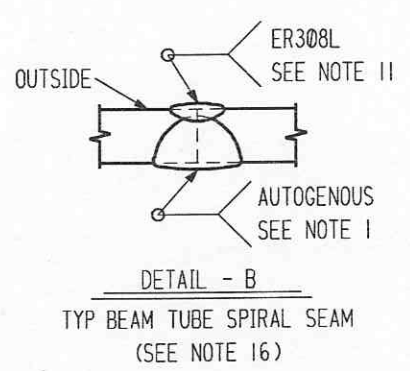
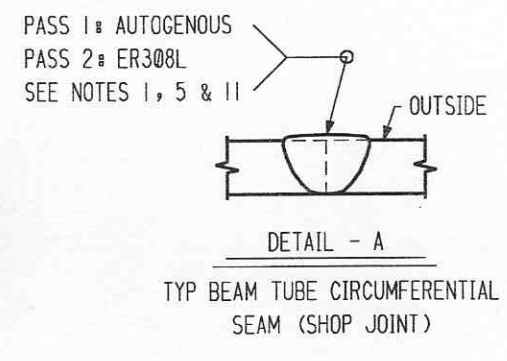


SHIP PC	MARK	ASSM PC	DESCRIPTION	LENGTH MM	SPEC	ID
1	4-A		BEAM TUBE SUB-ASSEMBLY - A			
	4-1	1	TUBE 1245 OD X 3.2 (49.00 OD X 0.127 X 62'-10 23/32)	19170	M1	A
	4-2	1	EXPANSION JOINT (SEE HYPAN DWG. #50418)	635 (2'-1)	M2	A
	15-1	25	VACUUM STIFFENER			
	16-A	1	SUPPORT RING ASS'Y			
	19-13	1	LATERAL SUPPORT BRACKET			
	19-14	2	VERTICAL SUPPORT BRACKET			
1	4-B		BEAM TUBE SUB-ASSEMBLY - B			
	4-3	1	TUBE 1245 OD X 3.2 (49.00 OD X 0.127 X 64'-11 23/32)	19805	M1	A
	7-6	1	FIXED SUPPORT BRACKET			
	7-7	1	STIFFENER REINFORCEMENT			
	15-1	25	VACUUM STIFFENER			
	16-A	2	SUPPORT RING ASS'Y			
	19-13	1	LATERAL SUPPORT BRACKET			
	19-14	2	VERTICAL SUPPORT BRACKET			
			M1 = MAT'L SPEC C-240-0186 (SA240 TP 304L HRAP)			
			M2 = MAT'L SPEC C-EJ-CO (SA240 TP 304L HRAP)			



- NOTES: (FOR DWG. #4 SHT. 1 THRU 7)
- CIRCUMFERENTIAL SEAM WILL BE WELDED BEFORE CLEANING AND LEAK TESTING.
 - DIMENSIONS POSITIONING VACUUM STIFFENERS (15-1) LOCATE THE CENTERLINE OF THE STIFFENER.
 - DIMENSIONS POSITIONING SUPPORT RINGS (16-A) LOCATE THE CENTER OF THE LAP JOINT.
 - ORIENT SUPPORT RINGS (16-A) SO BOTTOM HALF OF RING IS CLOSEST TO THE NEAREST TUBE END (UNLESS NOTED).
 - ORIENT BEAM TUBE SPIRAL WELD SEAMS AND EXPANSION JOINT LONGITUDINAL SEAMS AS SHOWN ON DRAWING @ SHT. 2.
 - MARK END-A AND END-B OF EACH BEAM TUBE SECTION AFTER SPIRAL WELDING PER FABSEQ, SECT. 3.3.
 - WORK THIS DRAWING WITH DWG. #0, 7, 15, 16, 19, 20 AND 21.
 - DIMENSIONS POSITIONING SUPPORT RINGS (21-A) LOCATE THE CENTERLINE OF THE RING.
 - RECORD WIDTH OF COIL MATERIAL USED TO FABRICATE EACH TUBE SECTION ON THE QA RECORD DRAWING FOR THAT TUBE.
 - SEE DRAWING #7 FOR LOCATION OF WELD FOR THIS RING ONLY. OTHER RINGS CAN BE WELDED ON EITHER SIDE.
 - WELD FILLER METAL TO BE CLEANED PER SPEC WMS-ER308L.
 - TOLERANCE OF SUB-ASSEMBLY LENGTH IS +/- 4 MM.
 - DISTANCE FROM EACH SUPPORT RING (16-A) TO NEAREST END OF SUB-ASSEMBLY TO BE AS DETAILED WITHIN +/- 4 MM.
 - MAXIMUM CLEAR SPACE BETWEEN TWO ADJACENT STIFFENERS TO BE NO GREATER THAN 762 MM (30 IN.).
 - THE EXPANSION JOINTS (2) FOR SUB-ASSEMBLIES (E), (G), (J), (K), (M) AND (R) SHALL HAVE EQUAL OR HIGHER SPRING RATES THAN THE EXPANSION JOINTS FOR THE ADJACENT SUB-ASSEMBLY (A).
 - INSIDE AND OUTSIDE WELD AT THE SEAM SHALL OVERLAP TO PROVIDE COMPLETE PENETRATION.
 - ALL DIMENSIONS ARE AFTER WELDING UNLESS NOTED OTHERWISE. STIFFENER WELDING WILL DECREASE OVERALL LENGTH BY ABOUT 2 MM (1/16").

APPROVED

M. Jellison 12-6-96
CBI DATE

JQ 12/13/96
CALTECH DATE

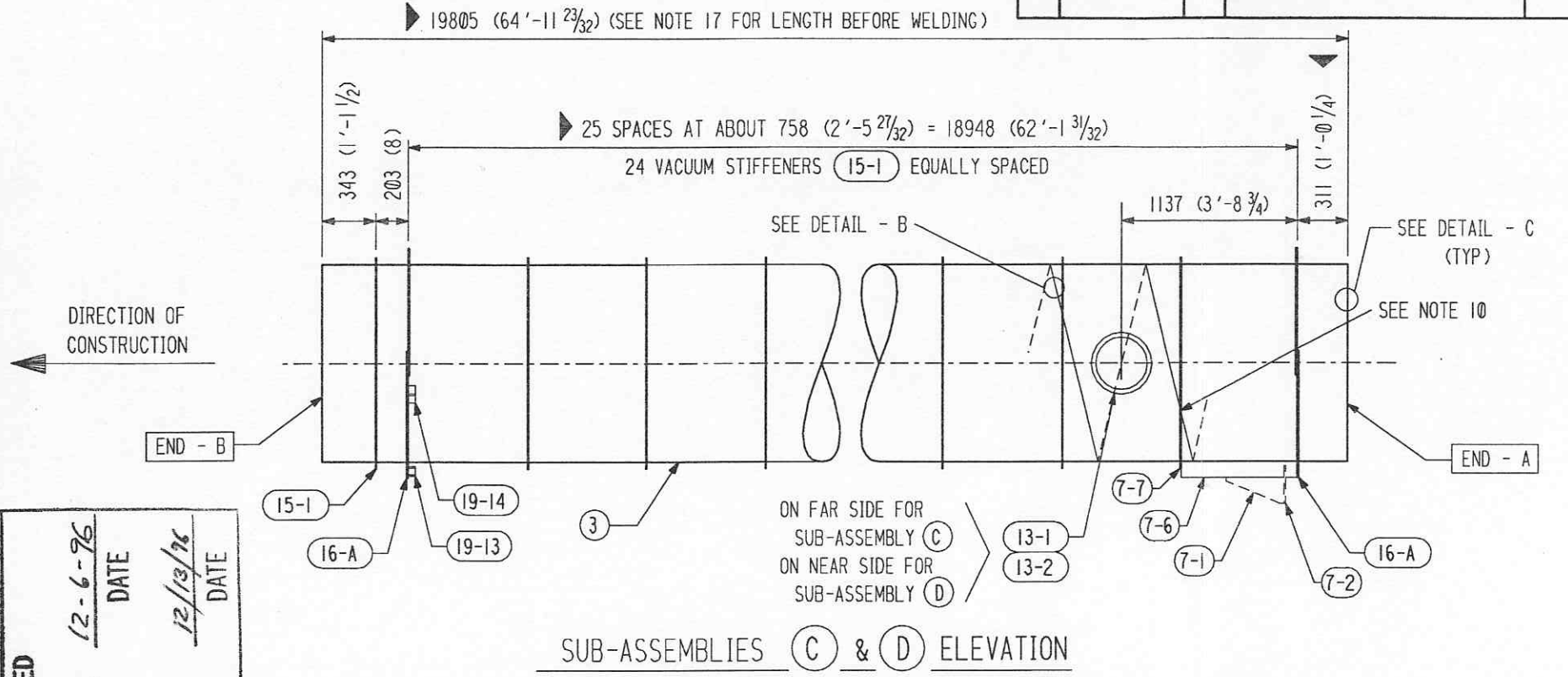
CBI LIGO BEAM TUBE HANFORD, WA & LIVINGSTON, LA SUB-ASSEMBLIES (A) & (B)		SUPPLIER'S / PURCHASER'S NO	
CUSTOMER'S NO BY KJR CHKD DET DATE 3-15-94 D.E. THONN ENGINEERING ASSIGNED		CONTRACT NO 953571 DWG 4 REV 6 SHT 1	
LIGO-D950034-06-B			

55710104.DGN

INDICATES CHANGE FROM PREVIOUS ISSUE

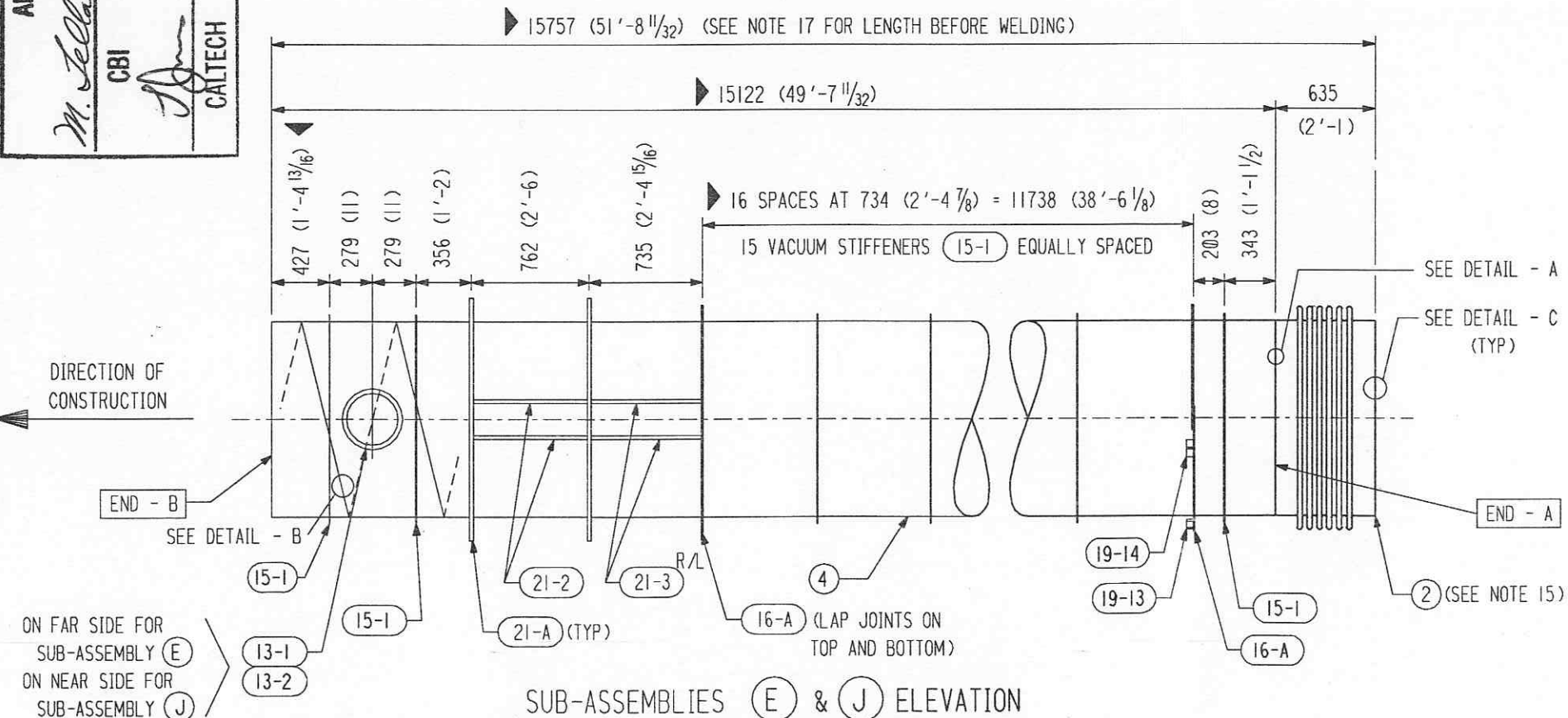
SHIP PC	MARK	ASSM PC	DESCRIPTION	LENGTH MM	SPEC	ID
	21-3 R/L	2	TERM. SUPPORT RING BRACKET (SHORT)			
	21-4 R/L	2	TERM. SUPPORT RING BRACKET (LONG)			

SHIP PC	MARK	ASSM PC	DESCRIPTION	LENGTH MM	SPEC	ID
1	4-C		BEAM TUBE SUB-ASSEMBLY - C			
	4-3	1	TUBE 1245 OD X 3.2 (49.00 OD X 0.127 X 64'-11 23/32)	19805	M1	A
	7-6	1	FIXED SUPPORT BRACKET			
	7-7	1	STIFFENER REINFORCEMENT			
	13-1	1	PUMP PORT FLANGE			
	13-2	1	PUMP PORT PAD PLATE			
	15-1	25	VACUUM STIFFENER			
	16-A	2	SUPPORT RING ASS'Y			
	19-13	1	LATERAL SUPPORT BRACKET			
	19-14	2	VERTICAL SUPPORT BRACKET			
1	4-D		BEAM TUBE SUB-ASSEMBLY - D			
	4-3	1	TUBE 1245 OD X 3.2 (49.00 OD X 0.127 X 64'-11 23/32)	19805	M1	A
	7-6	1	FIXED SUPPORT BRACKET			
	7-7	1	STIFFENER REINFORCEMENT			
	13-1	1	PUMP PORT FLANGE			
	13-2	1	PUMP PORT PAD PLATE			
	15-1	25	VACUUM STIFFENER			
	16-A	2	SUPPORT RING ASS'Y			
	19-13	1	LATERAL SUPPORT BRACKET			
	19-14	2	VERTICAL SUPPORT BRACKET			
1	4-E		BEAM TUBE SUB-ASSEMBLY - E			
	4-4	1	TUBE 1245 OD X 3.2 (49.00 OD X 0.127 X 49'-7 11/32)	15122	M1	A
	4-2	1	EXPANSION JOINT (SEE HYSAN DWG. #50418)	635	M2	A
	13-1	1	PUMP PORT FLANGE			
	13-2	1	PUMP PORT PAD PLATE			
	15-1	18	VACUUM STIFFENER			
	16-A	2	SUPPORT RING ASS'Y			
	19-13	1	LATERAL SUPPORT BRACKET			
	19-14	2	VERTICAL SUPPORT BRACKET			
	21-A	2	TERMINATION SUPPORT RING ASS'Y			
	21-2	4	TERM. SUPPORT RING BRACKET (RECT.)			
	21-3 R/L	2	TERM. SUPPORT RING BRACKET (SHORT)			
	21-4 R/L	2	TERM. SUPPORT RING BRACKET (LONG)			
1	4-J		BEAM TUBE SUB-ASSEMBLY - J			
	4-4	1	TUBE 1245 OD X 3.2 (49.00 OD X 0.127 X 49'-7 11/32)	15122	M1	A
	4-2	1	EXPANSION JOINT (SEE HYSAN DWG. #50418)	635	M2	A
	13-1	1	PUMP PORT FLANGE			
	13-2	1	PUMP PORT PAD PLATE			
	15-1	18	VACUUM STIFFENER			
	16-A	2	SUPPORT RING ASS'Y			
	19-13	1	LATERAL SUPPORT BRACKET			
	19-14	2	VERTICAL SUPPORT BRACKET			
	21-A	2	TERMINATION SUPPORT RING ASS'Y			
	21-2	4	TERM. SUPPORT RING BRACKET (RECT.)			



SUB-ASSEMBLIES (C) & (D) ELEVATION

(C) DETAILED AND BILLED FOR (1), (28) REQUIRED ; (D) DETAILED AND BILLED FOR (1), (28) REQUIRED



SUB-ASSEMBLIES (E) & (J) ELEVATION

(E) DETAILED AND BILLED FOR (1), (2) REQUIRED ; (J) DETAILED AND BILLED FOR (1), (2) REQUIRED

INDICATES CHANGE FROM PREVIOUS ISSUE

APPROVED

M. Jellalian 12-6-96 DATE

CBI

12/13/96 DATE

CALTECH

REVISIONS

BY	DATE	DESCRIPTION
CHKD	11-21-96	REVISED TUBE LENGTHS DUE TO HIGHER BAKE TEMPERATURE.
CHKD	7-26-96	ADDED PC. 7-7 TO ASSY. C & D.
CHKD	6-24-96	REV. ENTIRE SHIT.

REMARKS

CBI

LIGO BEAM TUBE
HANFORD, WA & LIVINGSTON, LA

SUB-ASSEMBLIES
(C), (D), (E) & (J)

CUSTOMER'S NO. _____ CONTRACT NO. 953571

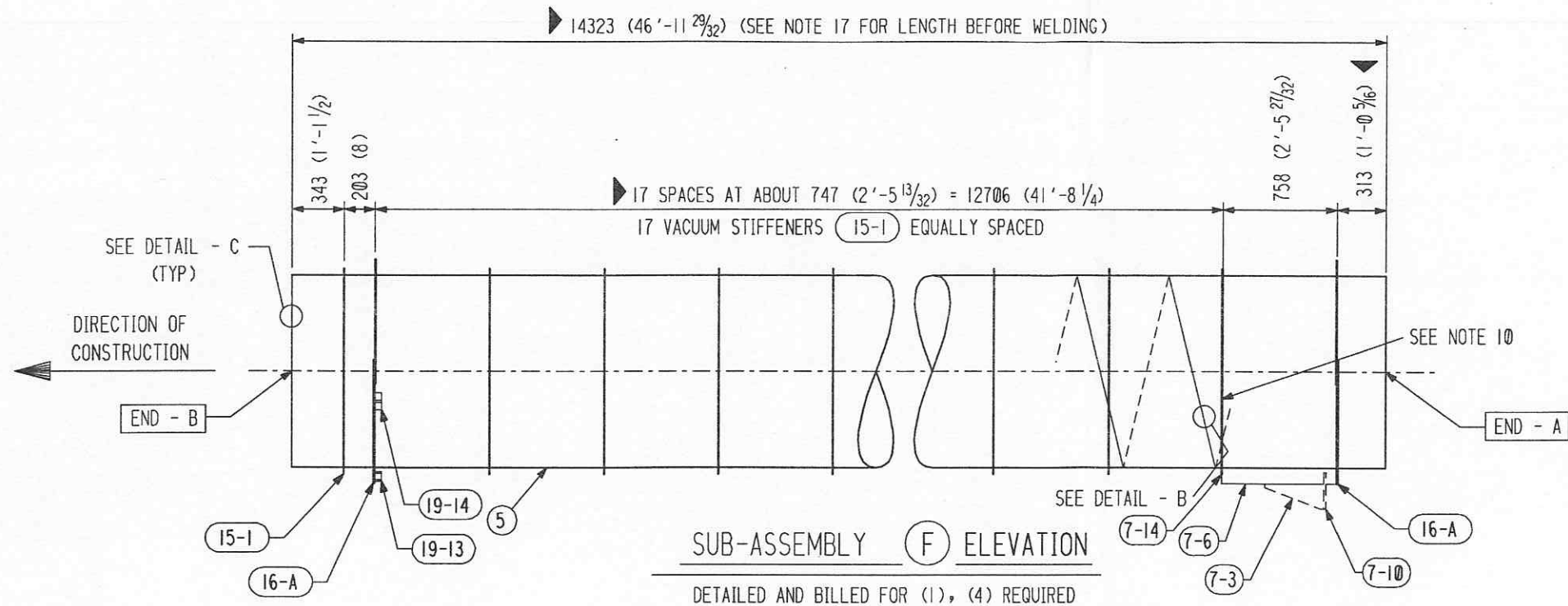
BY DTR_CHKD CST DATE 3/11/96

M. L. TELLALIAN
ENGINEERING ASSIGNED

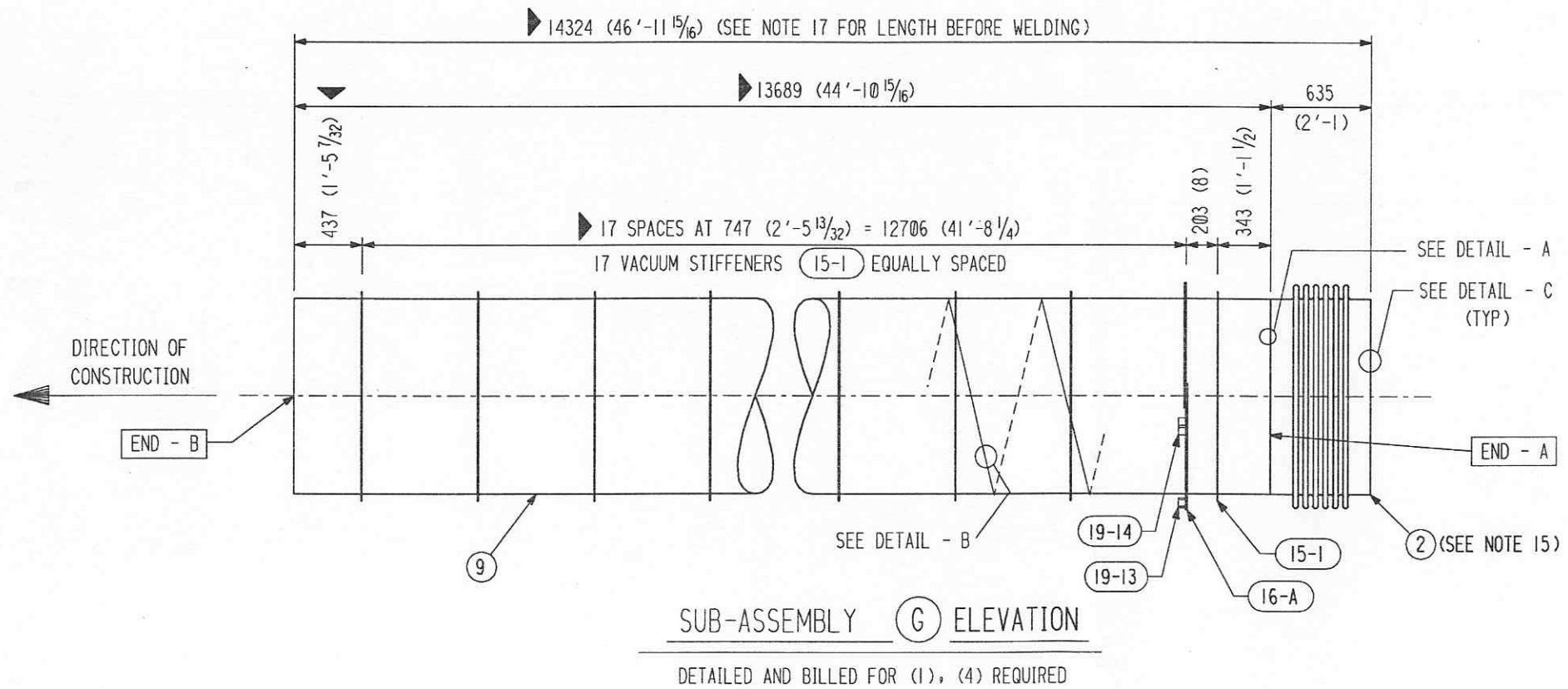
DWG 4 REV 6
SHT 2

L140-D950034-06-B

55710204.DGN



SHIP PC	MARK	ASSM PC	DESCRIPTION	LENGTH MM	SPEC	ID
1	4-F		BEAM TUBE SUB-ASSEMBLY - F			
	4-5	1	TUBE 1245 OD X 3.2 (49.00 OD X 0.127 X 46'-11 29/32)	14323	M1	A
	7-6	1	FIXED SUPPORT BRACKET			
	7-14	1	STIFFENER REINFORCEMENT			
	15-1	18	VACUUM STIFFENER			
	16-A	2	SUPPORT RING ASS'Y			
	19-13	1	LATERAL SUPPORT BRACKET			
	19-14	2	VERTICAL SUPPORT BRACKET			
1	4-G		BEAM TUBE SUB-ASSEMBLY - G			
	4-9	1	TUBE 1245 OD X 3.2 (49.00 OD X 0.127 X 44'-10 15/16)	13689	M1	A
	4-2	1	EXPANSION JOINT (SEE HYPAN DWG. #50418)	635 (2'-1)	M2	A
	15-1	18	VACUUM STIFFENER			
	16-A	1	SUPPORT RING ASS'Y			
	19-13	1	LATERAL SUPPORT BRACKET			
	19-14	2	VERTICAL SUPPORT BRACKET			



APPROVED

M. Tellalian 12-6-96
CBI DATE

J. Don 12/13/96
CALTECH DATE

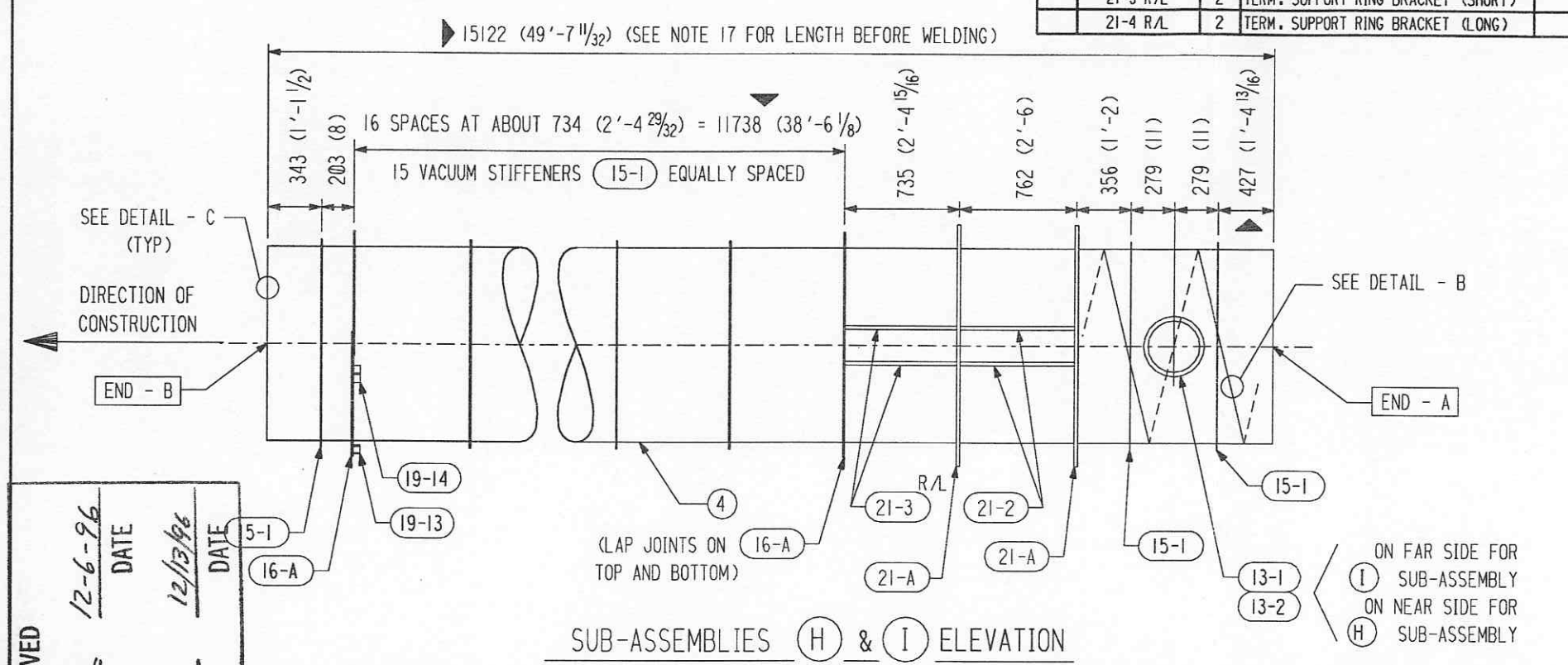
SUPPLIER'S / PURCHASER'S NO CBI	
LIGO BEAM TUBE HANFORD, WA & LIVINGSTON, LA SUB-ASSEMBLIES (F) & (G)	
CUSTOMER'S NO BY DTR CHKD CST DATE 3/11/96 M. L. TELLALIAN ENGINEERING ASSIGNED	CONTRACT NO 953571 DWG 4 SHT 3 REV 6
L190-D950034-06-B	

55710304.DGN

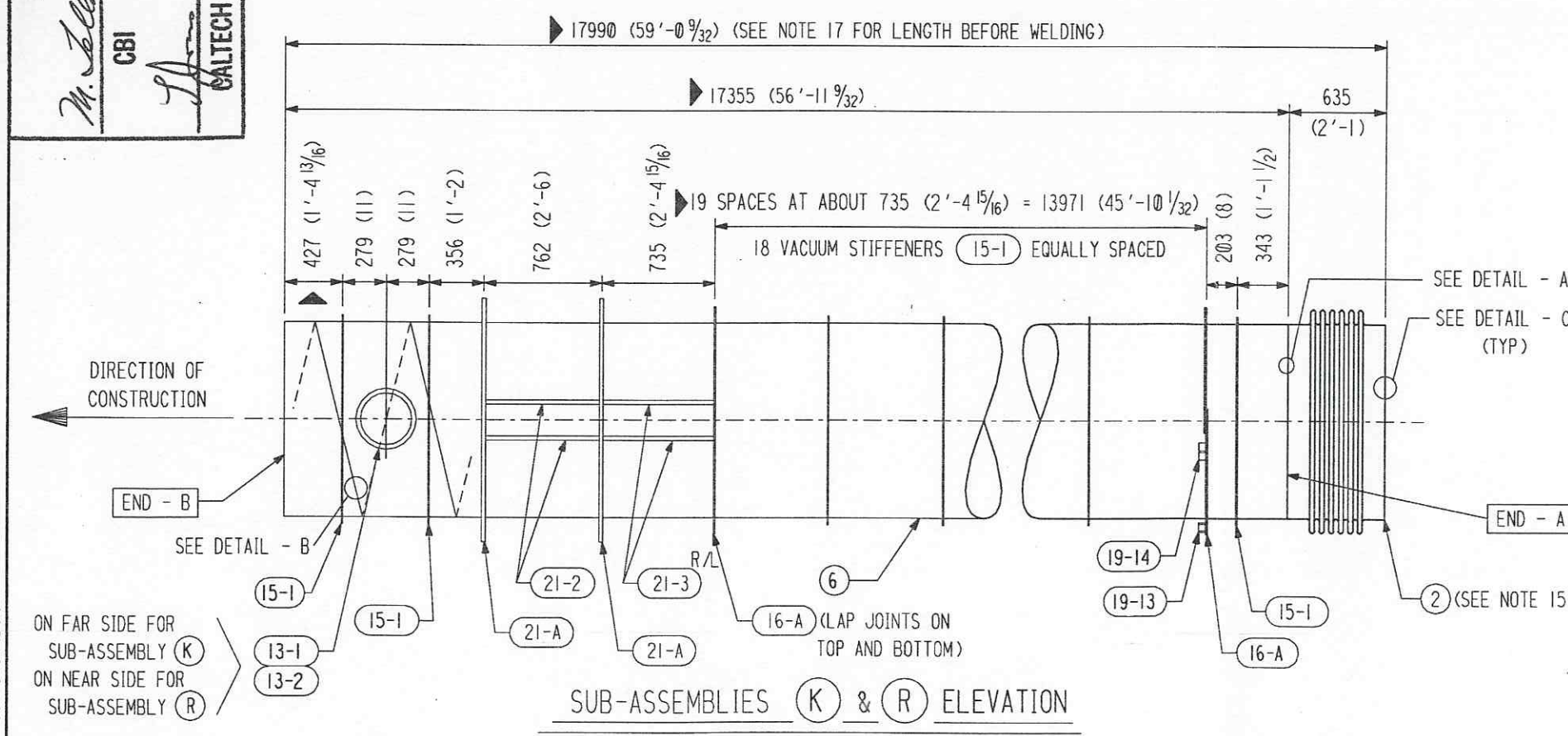
INDICATES CHANGE FROM PREVIOUS ISSUE

SHP PC	MARK	ASSM PC	DESCRIPTION	LENGTH MM	SPEC	ID
	19-13	1	LATERAL SUPPORT BRACKET			
	19-14	2	VERTICAL SUPPORT BRACKET			
	21-A	2	TERMINATION SUPPORT RING ASS'Y			
	21-2	4	TERM. SUPPORT RING BRACKET (RECT.)			
	21-3 R/L	2	TERM. SUPPORT RING BRACKET (SHORT)			
	21-4 R/L	2	TERM. SUPPORT RING BRACKET (LONG)			

SHP PC	MARK	ASSM PC	DESCRIPTION	LENGTH MM	SPEC	ID
1	4-H		BEAM TUBE SUB-ASSEMBLY - H			
	4-4	1	TUBE 1245 OD X 3.2 (49.00 OD X 0.127 X 49'-7 11/32)	15122	MI	A
	13-1	1	PUMP PORT FLANGE			
	13-2	1	PUMP PORT PAD PLATE			
	15-1	18	VACUUM STIFFENER			
	16-A	2	SUPPORT RING ASS'Y			
	19-13	1	LATERAL SUPPORT BRACKET			
	19-14	2	VERTICAL SUPPORT BRACKET			
	21-A	2	TERMINATION SUPPORT RING ASS'Y			
	21-2	4	TERM. SUPPORT RING BRACKET (RECT.)			
	21-3 R/L	2	TERM. SUPPORT RING BRACKET (SHORT)			
	21-4 R/L	2	TERM. SUPPORT RING BRACKET (LONG)			
1	4-I		BEAM TUBE SUB-ASSEMBLY - I			
	4-4	1	TUBE 1245 OD X 3.2 (49.00 OD X 0.127 X 49'-7 11/32)	15122	MI	A
	13-1	1	PUMP PORT FLANGE			
	13-2	1	PUMP PORT PAD PLATE			
	15-1	18	VACUUM STIFFENER			
	16-A	2	SUPPORT RING ASS'Y			
	19-13	1	LATERAL SUPPORT BRACKET			
	19-14	2	VERTICAL SUPPORT BRACKET			
	21-A	2	TERMINATION SUPPORT RING ASS'Y			
	21-2	4	TERM. SUPPORT RING BRACKET (RECT.)			
	21-3 R/L	2	TERM. SUPPORT RING BRACKET (SHORT)			
	21-4 R/L	2	TERM. SUPPORT RING BRACKET (LONG)			
1	4-K		BEAM TUBE SUB-ASSEMBLY - K			
	4-6	1	TUBE 1245 OD X 3.2 (49.00 OD X 0.127 X 56'-11 9/32)	17355	MI	A
	4-2	1	EXPANSION JOINT (SEE HYSAN DWG. #50418)	635 (2'-1)	M2	A
	13-1	1	PUMP PORT FLANGE			
	13-2	1	PUMP PORT PAD PLATE			
	15-1	21	VACUUM STIFFENER			
	16-A	2	SUPPORT RING ASS'Y			
	19-13	1	LATERAL SUPPORT BRACKET			
	19-14	2	VERTICAL SUPPORT BRACKET			
	21-A	2	TERMINATION SUPPORT RING ASS'Y			
	21-2	4	TERM. SUPPORT RING BRACKET (RECT.)			
	21-3 R/L	2	TERM. SUPPORT RING BRACKET (SHORT)			
	21-4 R/L	2	TERM. SUPPORT RING BRACKET (LONG)			
1	4-R		BEAM TUBE SUB-ASSEMBLY - R			
	4-6	1	TUBE 1245 OD X 3.2 (49.00 OD X 0.127 X 56'-11 9/32)	17355	MI	A
	4-2	1	EXPANSION JOINT (SEE HYSAN DWG. #50418)	635 (2'-1)	M2	A
	13-1	1	PUMP PORT FLANGE			
	13-2	1	PUMP PORT PAD PLATE			
	15-1	21	VACUUM STIFFENER			
	16-A	2	SUPPORT RING ASS'Y			



(H) DETAILED AND BILLED FOR (1), (2) REQUIRED ; (I) DETAILED AND BILLED FOR (1), (2) REQUIRED



(K) DETAILED AND BILLED FOR (1), (2) REQUIRED ; (R) DETAILED AND BILLED FOR (1), (2) REQUIRED

APPROVED

M. Tellalian 12-6-96 DATE

CBI

J. ... 12/13/96 DATE

CALTECH

REVISIONS

BY	CHKD	DATE	REVISIONS
5	4	11-21-96	REVISED OTHER SHEETS
4	3	7-26-96	REV. ENTIRE SHT.
3	2	6-24-96	

REMARKS

DPS REVISED TUBE LENGTHS DUE TO HIGHER BAKE TEMPERATURE.

CBI SUPPLIER'S / PURCHASER'S NO

LIGO BEAM TUBE
HANFORD, WA & LIVINGSTON, LA
SUB-ASSEMBLIES
(H), (I), (K) & (R)

CUSTOMER'S NO
BY DTR CHKD CST DATE 3/11/96

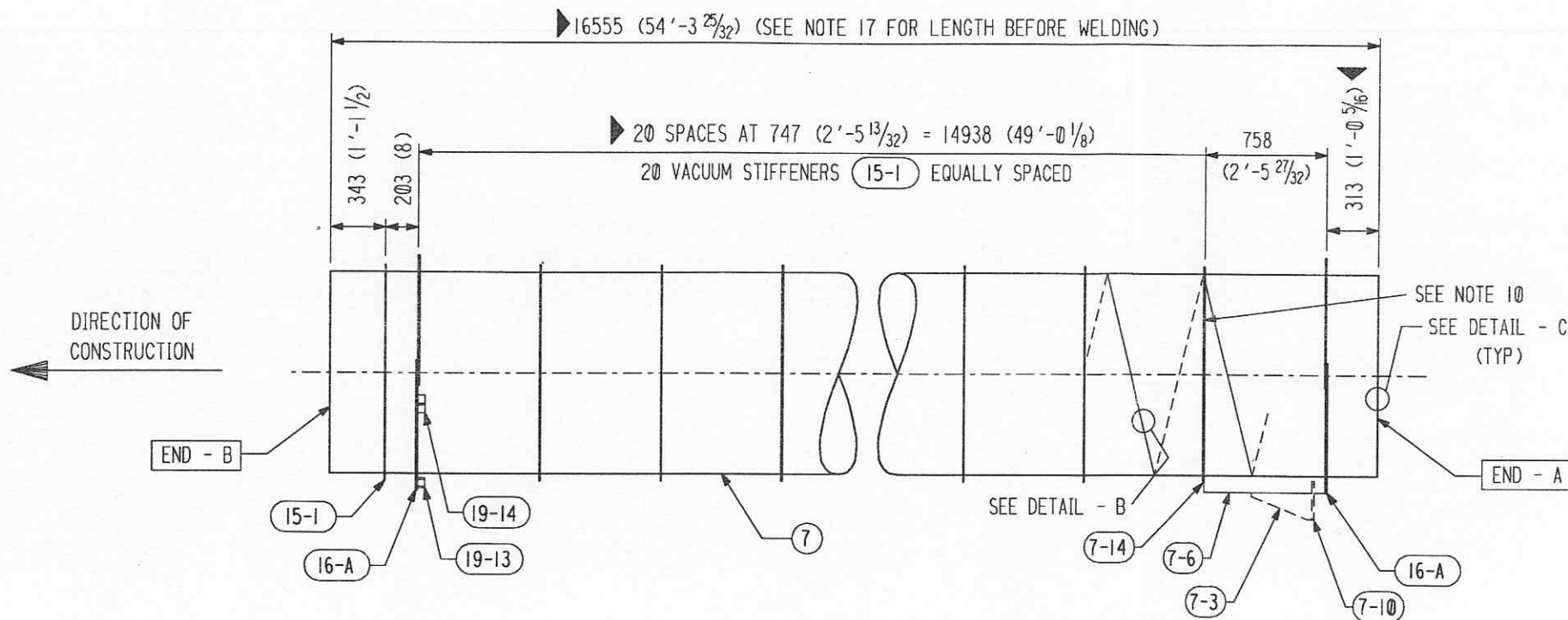
CONTRACT NO
953571

M. L. TELLALIAN
ENGINEERING ASSIGNED

DWG 4 REV 4
SHT 4 6

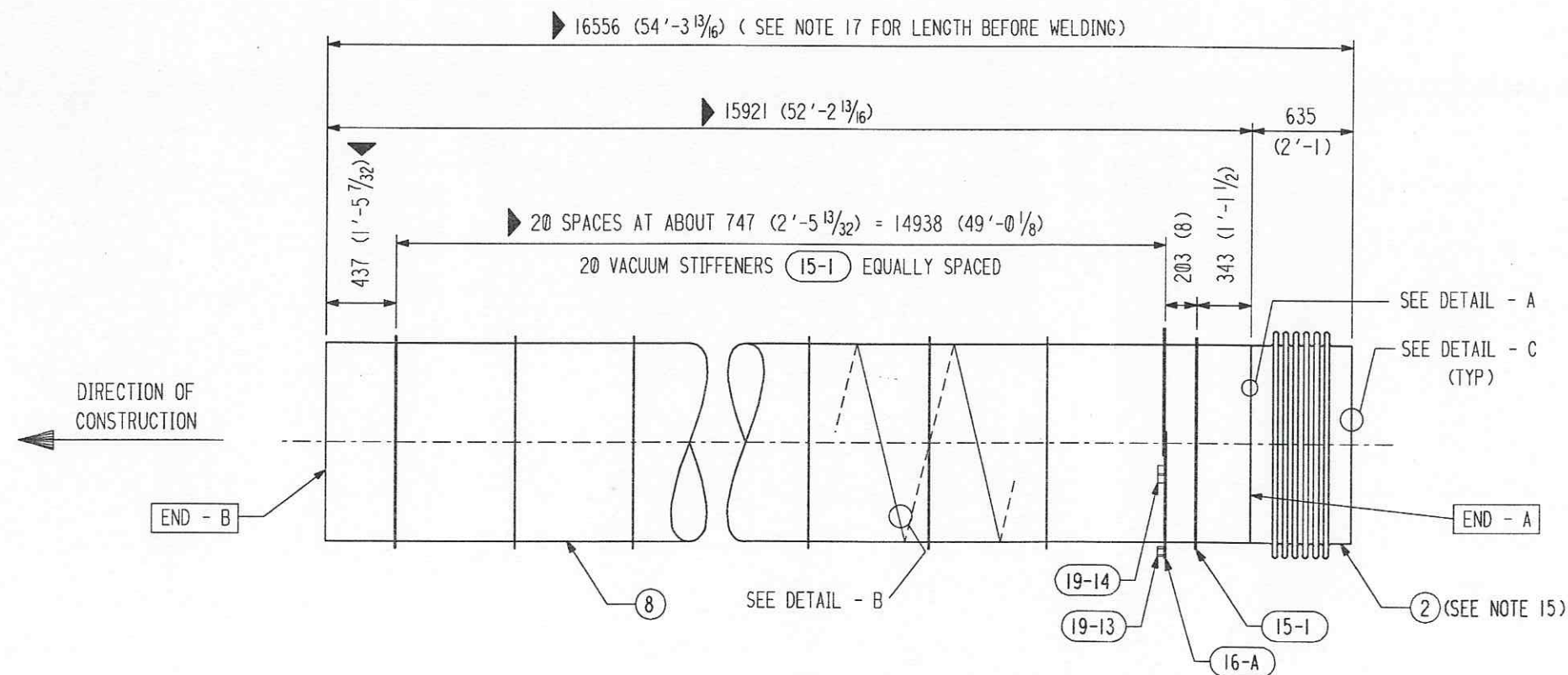
LIGO-D95003A-06-B

55710404.DGN



SUB-ASSEMBLY (L) ELEVATION

DETAILED AND BILLED FOR (1), (4) REQUIRED



SUB-ASSEMBLY (M) ELEVATION

DETAILED AND BILLED FOR (1), (4) REQUIRED

INDICATES CHANGE FROM PREVIOUS ISSUE

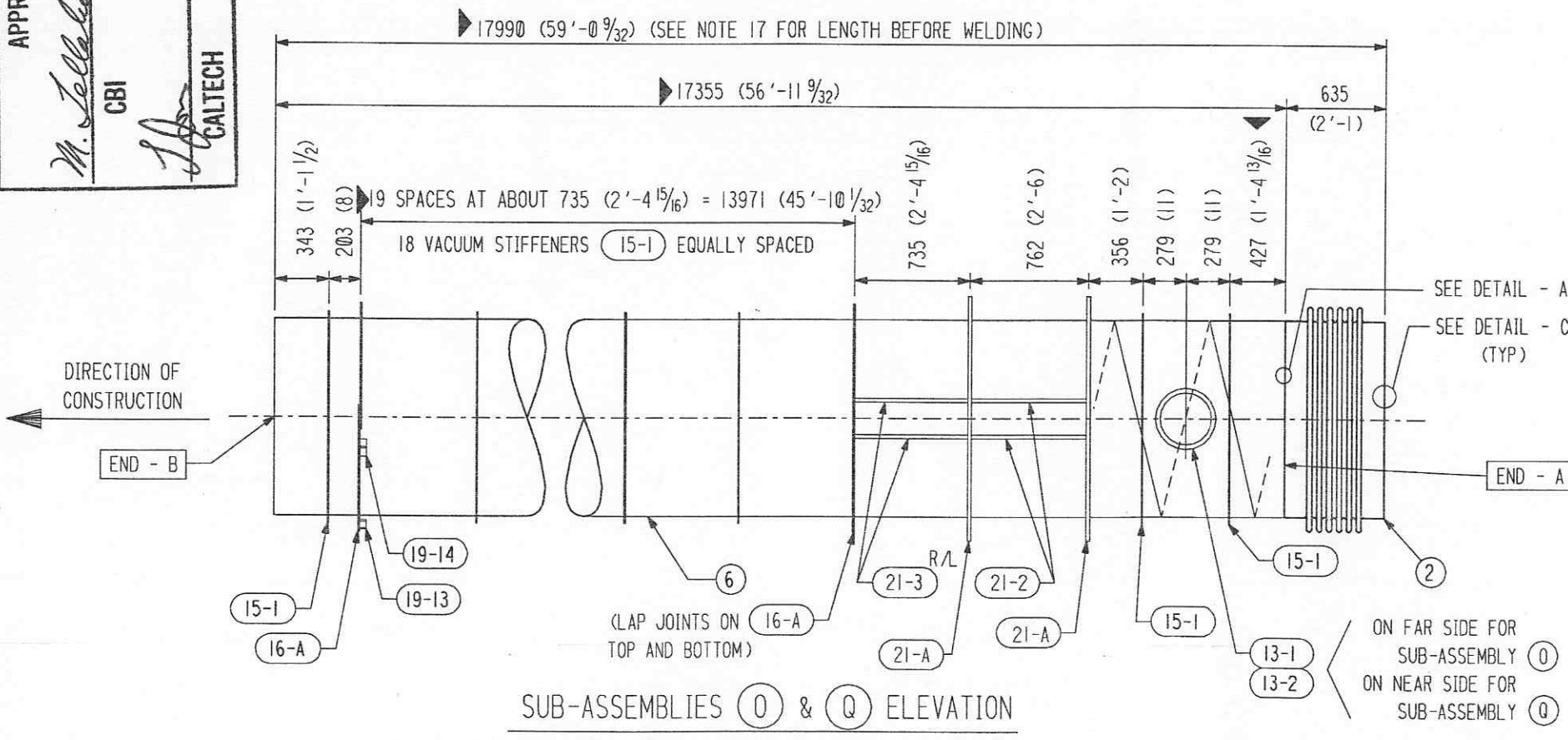
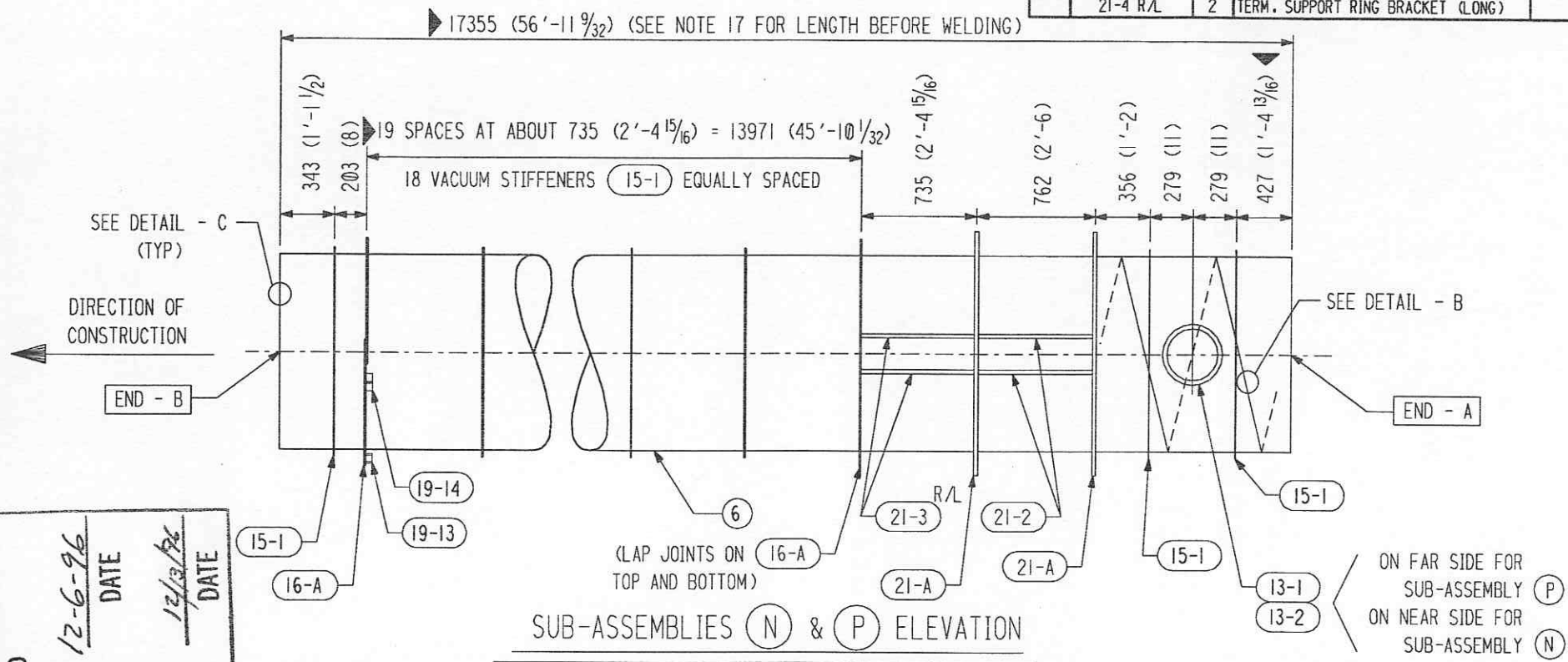
SHP PC	MARK	ASSEM PC	DESCRIPTION	LENGTH MM	SPEC	ID
1	4-L		BEAM TUBE SUB-ASSEMBLY - L			
	4-7	1	TUBE 1245 OD X 3.2 (49.00 OD X 0.127 X 54'-3 25/32)	16555	MI	A
	7-6	1	FIXED SUPPORT BRACKET			
	7-14	1	STIFFENER REINFORCEMENT			
	15-1	21	VACUUM STIFFENER			
	16-A	2	SUPPORT RING ASS'Y			
	19-13	1	LATERAL SUPPORT BRACKET			
	19-14	2	VERTICAL SUPPORT BRACKET			
1	4-M		BEAM TUBE SUB-ASSEMBLY - M			
	4-8	1	TUBE 1245 OD X 3.2 (49.00 OD X 0.127 X 52'-2 13/16)	15921	MI	A
	4-2	1	EXPANSION JOINT (SEE HYSpan DWG. #50418)	635 (2'-1)	M2	A
	15-1	21	VACUUM STIFFENER			
	16-A	1	SUPPORT RING ASS'Y			
	19-13	1	LATERAL SUPPORT BRACKET			
	19-14	2	VERTICAL SUPPORT BRACKET			

APPROVED	
<i>M. Tellalian</i>	12-6-96
CBI	DATE
<i>J. Don</i>	12/13/96
CALTECH	DATE

BY: DTR 11-21-96 CHKD: M.L.T. 11-21-96 DATE: 11-21-96 BY: M.L.T. 7-26-96 CHKD: M.L.T. 7-26-96 DATE: 7-26-96 BY: M.L.T. 6-24-96 CHKD: M.L.T. 6-24-96 DATE: 6-24-96	CBI LIGO BEAM TUBE HANFORD, WA & LIVINGSTON, LA SUB-ASSEMBLIES (L) & (M)		SUPPLIER'S / PURCHASER'S NO
	CUSTOMER'S NO BY DTR CHKD CST DATE 3/11/96		CONTRACT NO 953571
	M. L. TELLALIAN ENGINEERING ASSIGNED		DWG 4 SHT 5 REV 6
	LIGO-D940034-06-B		

SHIP PC	MARK	ASSM PC	DESCRIPTION	LENGTH MM	SPEC	ID
	19-13	1	LATERAL SUPPORT BRACKET			
	19-14	2	VERTICAL SUPPORT BRACKET			
	21-A	2	TERMINATION SUPPORT RING ASS'Y			
	21-2	4	TERM. SUPPORT RING BRACKET (RECT.)			
	21-3 R/L	2	TERM. SUPPORT RING BRACKET (SHORT)			
	21-4 R/L	2	TERM. SUPPORT RING BRACKET (LONG)			

SHIP PC	MARK	ASSM PC	DESCRIPTION	LENGTH MM	SPEC	ID
1	4-N		BEAM TUBE SUB-ASSEMBLY - N			
	4-6	1	TUBE 1245 OD X 3.2 (49.00 OD X 0.127 X 56'-11 9/32)	17355	MI	A
	13-1	1	PUMP PORT FLANGE			
	13-2	1	PUMP PORT PAD PLATE			
	15-1	21	VACUUM STIFFENER			
	16-A	2	SUPPORT RING ASS'Y			
	19-13	1	LATERAL SUPPORT BRACKET			
	19-14	2	VERTICAL SUPPORT BRACKET			
	21-A	2	TERMINATION SUPPORT RING ASS'Y			
	21-2	4	TERM. SUPPORT RING BRACKET (RECT.)			
	21-3 R/L	2	TERM. SUPPORT RING BRACKET (SHORT)			
	21-4 R/L	2	TERM. SUPPORT RING BRACKET (LONG)			
1	4-P		BEAM TUBE SUB-ASSEMBLY - P			
	4-6	1	TUBE 1245 OD X 3.2 (49.00 OD X 0.127 X 56'-11 9/32)	17355	MI	A
	13-1	1	PUMP PORT FLANGE			
	13-2	1	PUMP PORT PAD PLATE			
	15-1	21	VACUUM STIFFENER			
	16-A	2	SUPPORT RING ASS'Y			
	19-13	1	LATERAL SUPPORT BRACKET			
	19-14	2	VERTICAL SUPPORT BRACKET			
	21-A	2	TERMINATION SUPPORT RING ASS'Y			
	21-2	4	TERM. SUPPORT RING BRACKET (RECT.)			
	21-3 R/L	2	TERM. SUPPORT RING BRACKET (SHORT)			
	21-4 R/L	2	TERM. SUPPORT RING BRACKET (LONG)			
1	4-O		BEAM TUBE SUB-ASSEMBLY - O			
	4-6	1	TUBE 1245 OD X 3.2 (49.00 OD X 0.127 X 56'-11 9/32)	17355	MI	A
	4-2	1	EXPANSION JOINT (SEE HYSAN DWG. #50418)	635	M2	A
	13-1	1	PUMP PORT FLANGE			
	13-2	1	PUMP PORT PAD PLATE			
	15-1	21	VACUUM STIFFENER			
	16-A	2	SUPPORT RING ASS'Y			
	19-13	1	LATERAL SUPPORT BRACKET			
	19-14	2	VERTICAL SUPPORT BRACKET			
	21-A	2	TERMINATION SUPPORT RING ASS'Y			
	21-2	4	TERM. SUPPORT RING BRACKET (RECT.)			
	21-3 R/L	2	TERM. SUPPORT RING BRACKET (SHORT)			
	21-4 R/L	2	TERM. SUPPORT RING BRACKET (LONG)			
1	4-Q		BEAM TUBE SUB-ASSEMBLY - Q			
	4-6	1	TUBE 1245 OD X 3.2 (49.00 OD X 0.127 X 56'-11 9/32)	17355	MI	A
	4-2	1	EXPANSION JOINT (SEE HYSAN DWG. #50418)	635	M2	A
	13-1	1	PUMP PORT FLANGE			
	13-2	1	PUMP PORT PAD PLATE			
	15-1	21	VACUUM STIFFENER			
	16-A	2	SUPPORT RING ASS'Y			



APPROVED

M. Jellalian 12-6-96 DATE

CBI

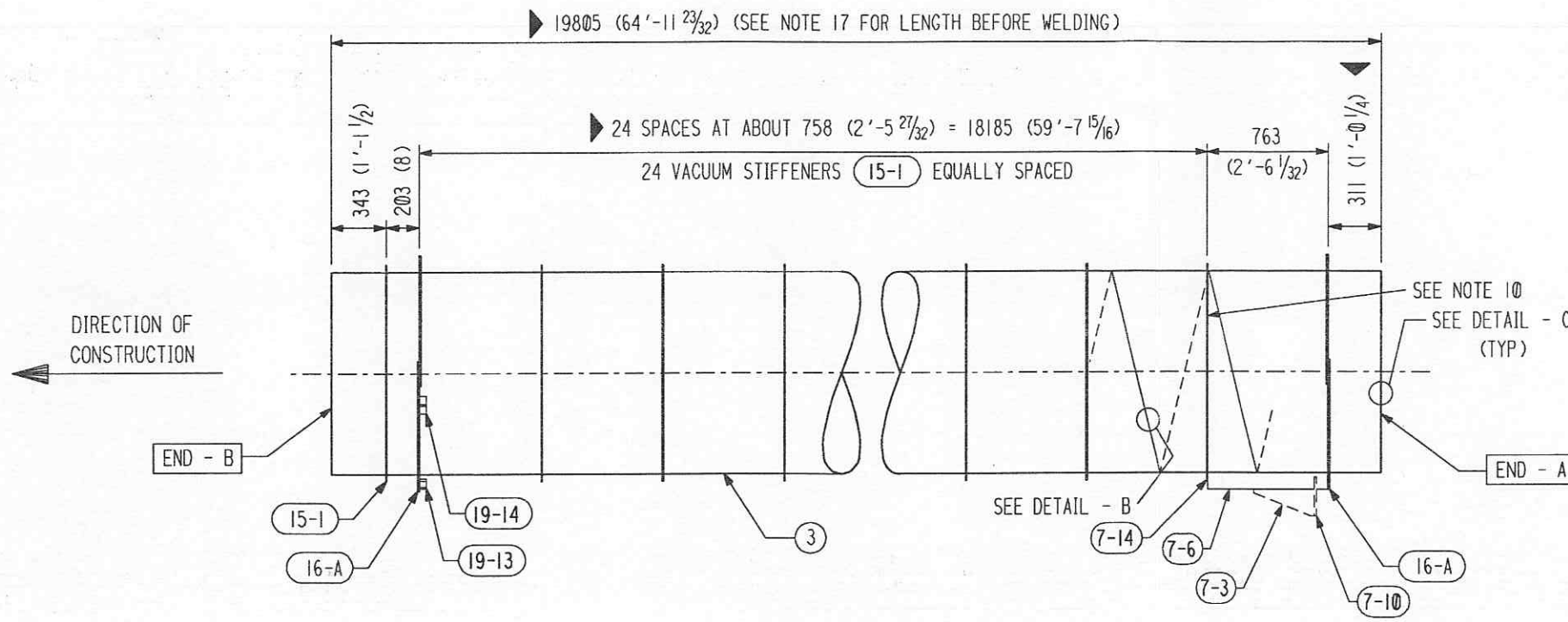
12/13/96 DATE

CALTECH

SUPPLIER'S / PURCHASER'S NO CBI		CUSTOMER'S NO BY DTR CHKD CST DATE 3/11/96		CONTRACT NO 953571	
LIGO BEAM TUBE HANFORD, WA & LIVINGSTON, LA SUB-ASSEMBLIES (N), (O), (P) & (Q)		DWG 4 SHT 6		REV 6	
LIGO-D950034-06-B					

55710604.DGN

55710704.DGN



SUB-ASSEMBLY (S) ELEVATION

DETAILED AND BILLED FOR (1), (8) REQUIRED

SHP PC	MARK	ASSM PC	DESCRIPTION	LENGTH MM	SPEC	ID
1	4-5		BEAM TUBE SUB-ASSEMBLY - S			
	4-3	1	TUBE 1245 OD X 3.2 (49.00 OD X 0.127 X 64'-11 23/32)	19805	MI	A
	7-6	1	FIXED SUPPORT BRACKET			
	7-14	1	STIFFENER REINFORCEMENT			
	15-1	25	VACUUM STIFFENER			
	16-A	2	SUPPORT RING ASS'Y			
	19-13	1	LATERAL SUPPORT BRACKET			
	19-14	2	VERTICAL SUPPORT BRACKET			

APPROVED	
<i>M. Tellalian</i>	12-6-96
CBI	DATE
<i>J.D.</i>	12/13/96
CALTECH	DATE

BY <input checked="" type="checkbox"/> DTS CHKD <input checked="" type="checkbox"/> M.L.T. DATE 11-21-96		BY <input checked="" type="checkbox"/> DTR CHKD <input checked="" type="checkbox"/> M.L.T. DATE 12-26-96		BY <input checked="" type="checkbox"/> DTR CHKD <input checked="" type="checkbox"/> M.L.T. DATE 12-21-96		REMARKS LIGO BEAM TUBE HANFORD, WA & LIVINGSTON, LA SUB-ASSEMBLY (S)	SUPPLIER'S / PURCHASER'S NO
ADD'D PC. 7-14 TO ASSY. S.		REV. ENTIRE SHT.		CUSTOMER'S NO BY DTR CHKD CST DATE 3/11/96 M.L. TELLALIAN ENGINEERING ASSIGNED			
REVISIONS						DWG 4 SHT 7	REV 60
L140-D950034-06-B							

INDICATES CHANGE FROM PREVIOUS ISSUE