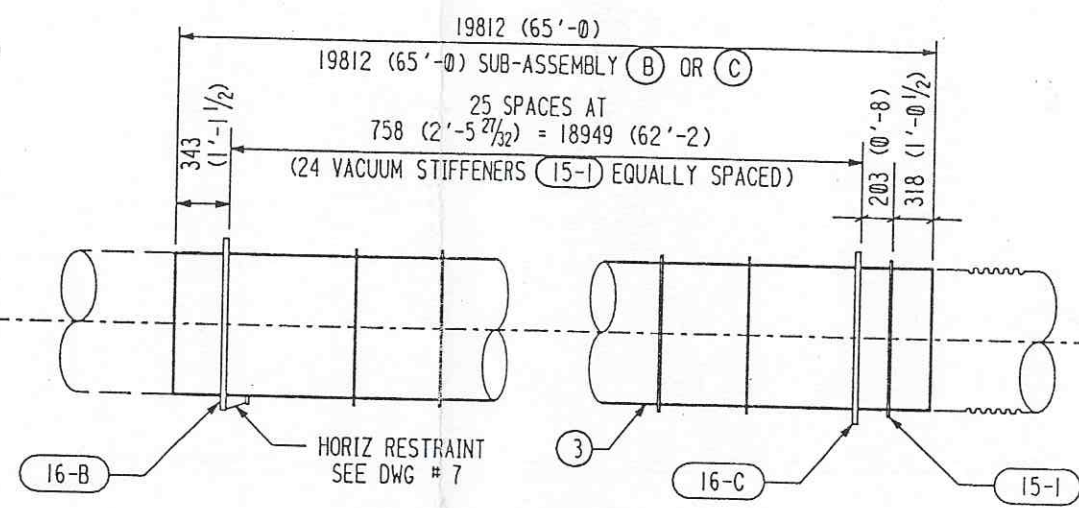
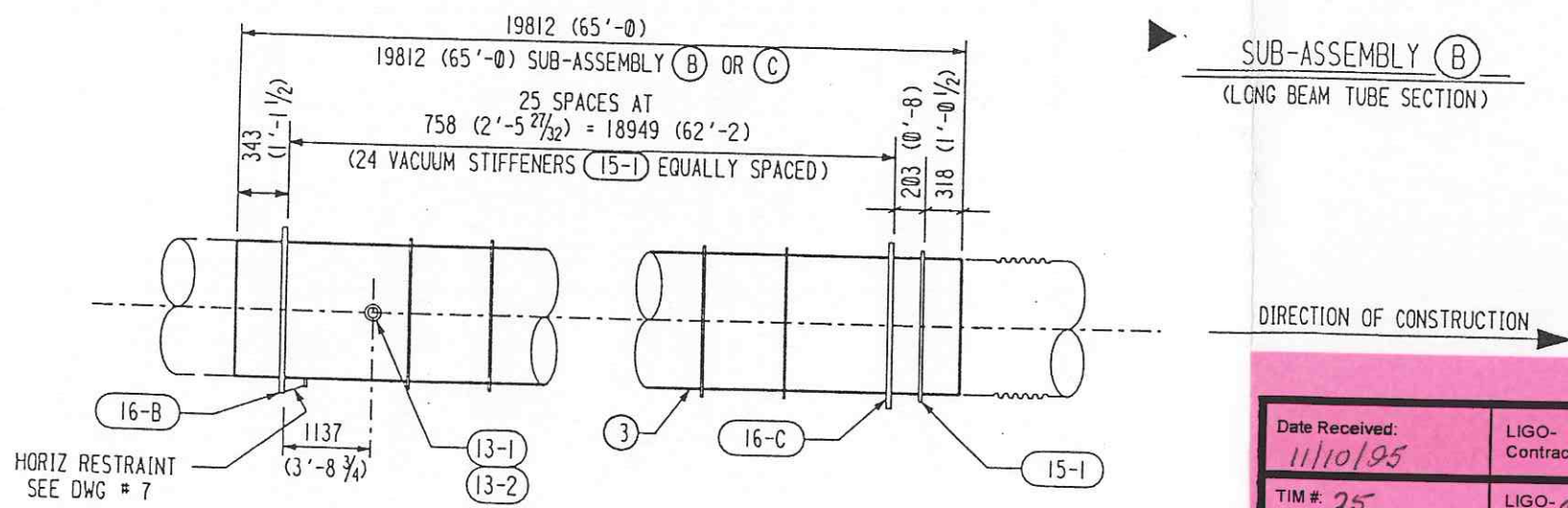


SUB-ASSEMBLY A
(SHORT BEAM TUBE SECTION W/EXPANSION JOINT)



SUB-ASSEMBLY B
(LONG BEAM TUBE SECTION)



SUB-ASSEMBLY C
(LONG BEAM TUBE SECTION W/VACUUM PORT)

SHP PC	MARK	ASSM PC	DESCRIPTION	LENGTH MM	SPEC
392	4-A		- BEAM TUBE ASSEMBLY -		
	4-1	392	BEAM TUBE 1245 DIA x 3.2 (49.00 OD x 0.127" THK x 62'-9 LG)	19126	M1
	4-2	392	EXPANSION JOINT	686	M2
	15-1	9800	VACUUM STIFFENERS		
	16-C	392	GUIDED SUPPORT RING ASS'Y		
336	4-B		- BEAM TUBE ASSEMBLY -		
	4-3	336	BEAM TUBE 1245 OD x 3.2 THK (49.00 OD x 0.127" THK x 65'-0 LG)	19812	M1
	15-1	8400	VACUUM STIFFENERS		
	16-B	336	FIXED SUPPORT RING ASS'Y		
	16-C	336	GUIDED SUPPORT RING ASS'Y		
56	4-C		- BEAM TUBE ASSEMBLY -		
	4-3	56	BEAM TUBE 1245 OD x 3.2 THK (49.00 OD x 0.127" THK x 65'-0 LG)	19812	M1
	13-1	56	VACUUM PORT		
	15-1	1400	VACUUM STIFFENERS		
	16-B	56	FIXED SUPPORT RING ASS'Y		
	16-C	56	GUIDED SUPPORT RING ASS'Y		
			M1 = MAT'L SPEC C-240-0186 (SA240 TP 304L HRAP)		
			M2 = MAT'L SPEC C-EJ-CO (SA240 TP 304L HRAP)		

APPROVED

M. Sellalain 11/10/95
CBI DATE

J. Jones 11/10/95
CALTECH DATE

- NOTES:**
- DURING CONSTRUCTION, THE CLEAN ROOM WILL SLIDE OVER ENDS WITHOUT AN EXPANSION JOINT.
 - CIRCUMFERENTIAL SEAM WILL BE WELDED BEFORE CLEANING AND LEAK TESTING.

Date Received: 11/10/95	LIGO- D950034-02-B Contractor #: CBI 4, Rev. 2
TIM #: 25	LIGO- C960675-00-V
Date: 3/29/96	Approved: <i>[Signature]</i>
TDM #:	LIGO-
Date: / /	Approved:
Gen'l Transmittal	LIGO-
Date: / /	Approved:

CHANGED LOCH OF EXPANSION JOINT & TUBE DIMENSIONS. SUGGESTED Baffles ADDED MAT'L SPEC. REVISED PC MTS.		REMARKS		CBI SUPPLIER'S / PURCHASER'S NO	
				LIGO BEAM TUBE HANFORD, WA & LIVINGSTON, LA SUB-ASSEMBLIES (A) (B) & (C)	
CUSTOMER'S NO BY <i>KJR</i> CHKD DATE		CONTRACT NO 930212		DWG 4 REV 2	
ENGINEERING ASSIGNED D.E. Thom		LIGO-D950034-02-B			

3212A004.DGN