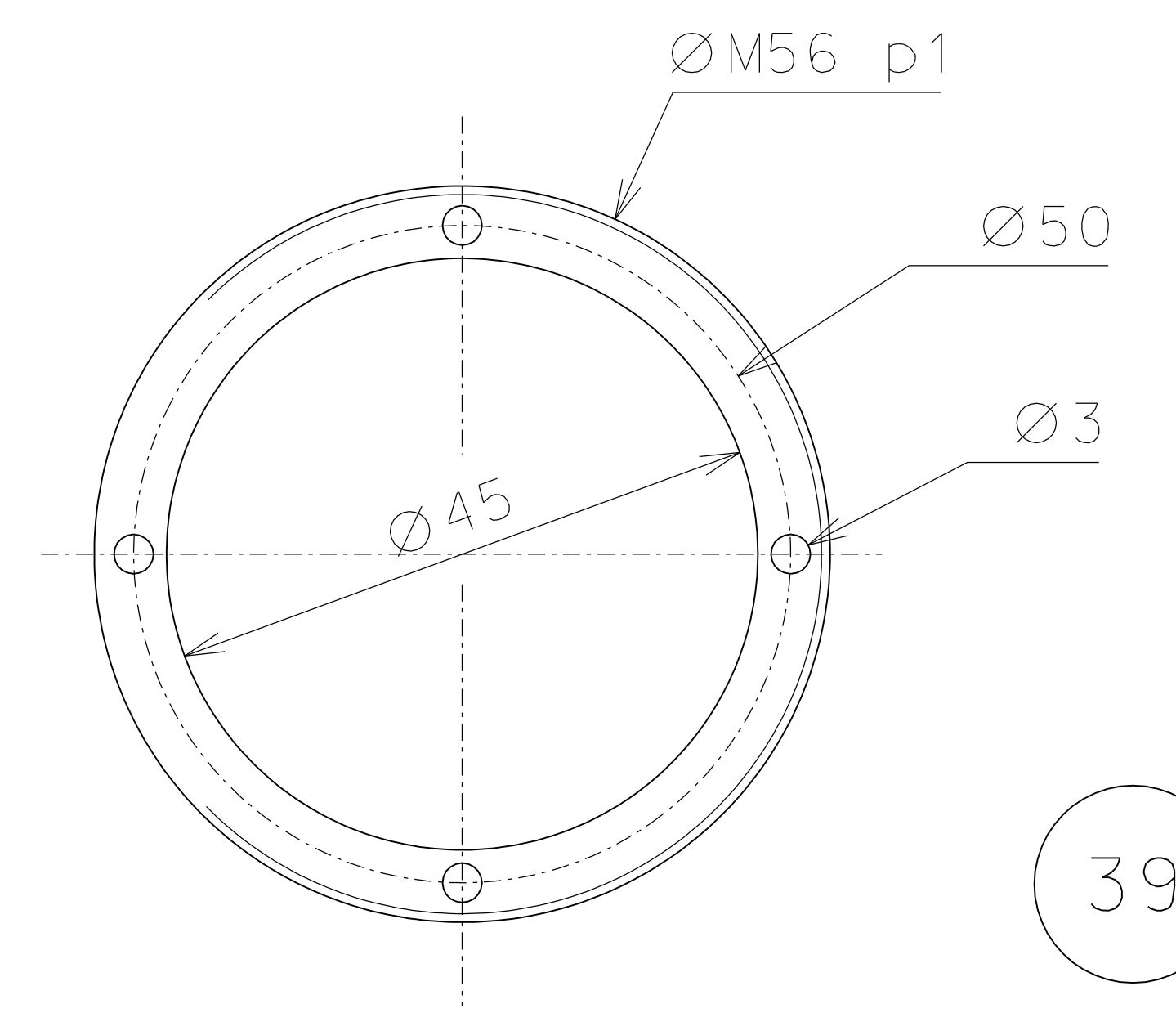
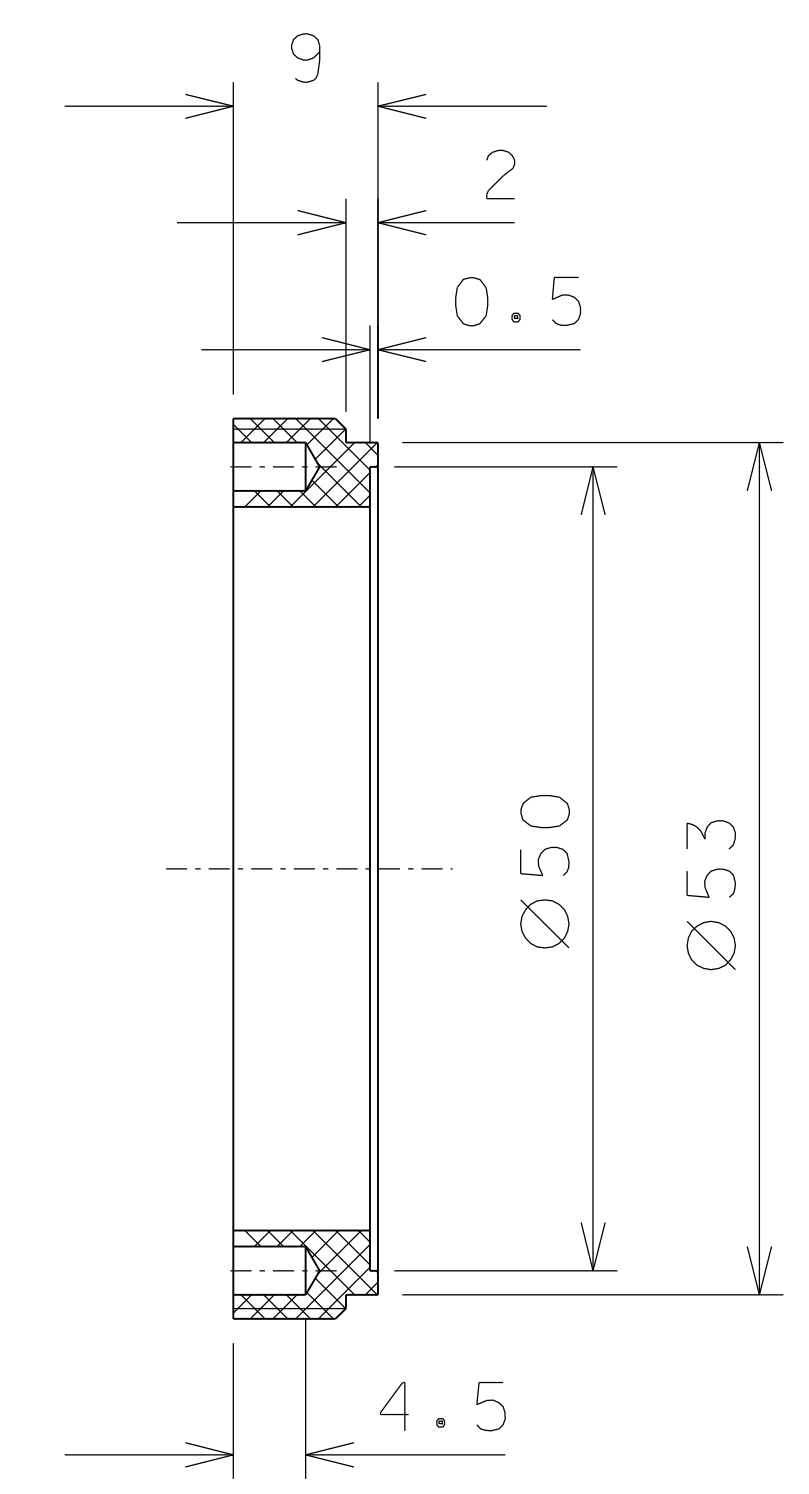
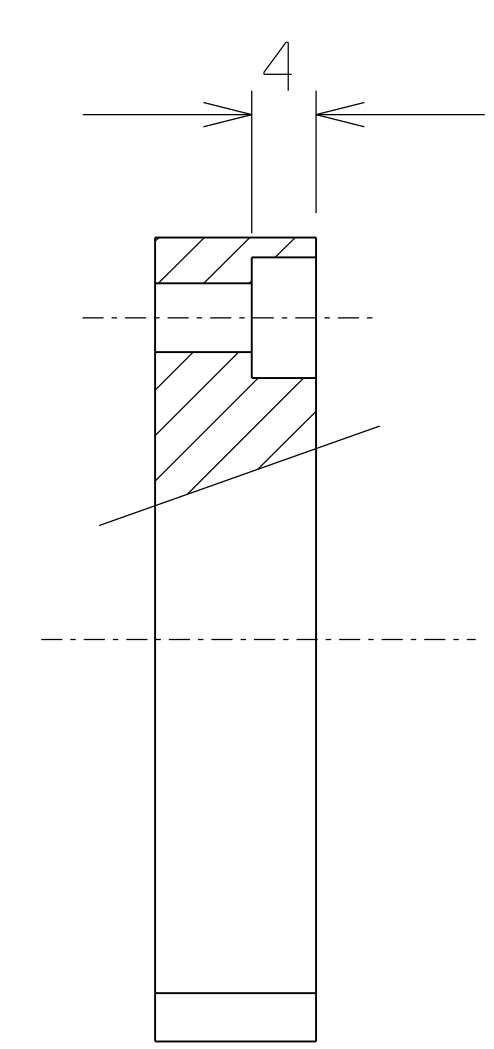
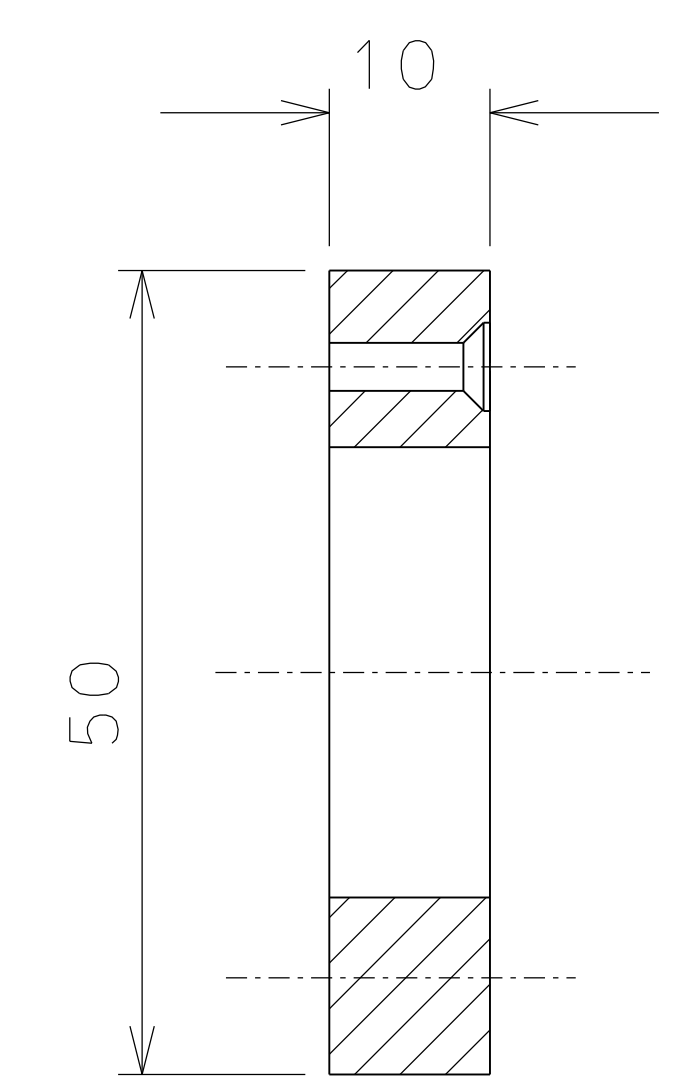
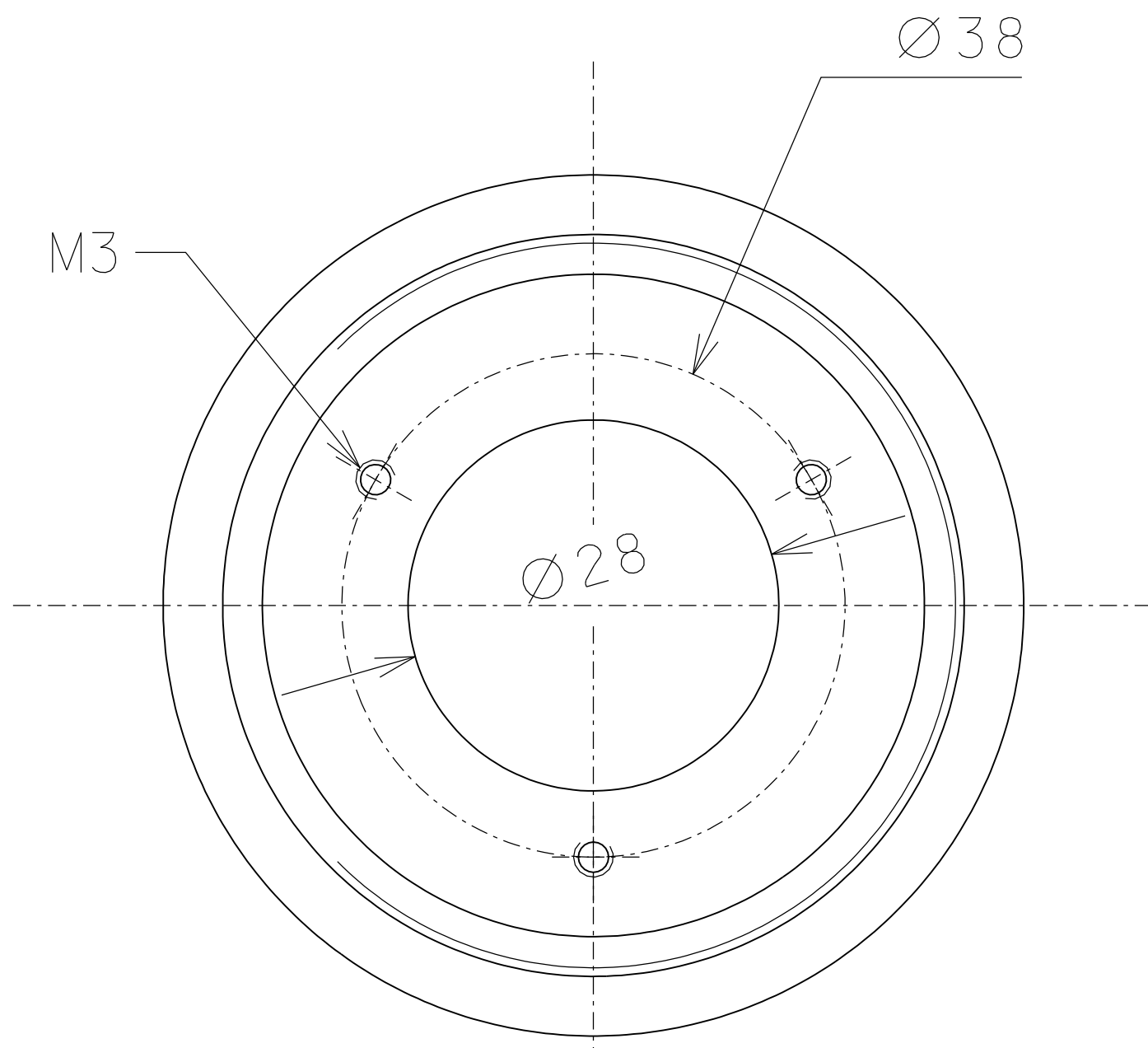
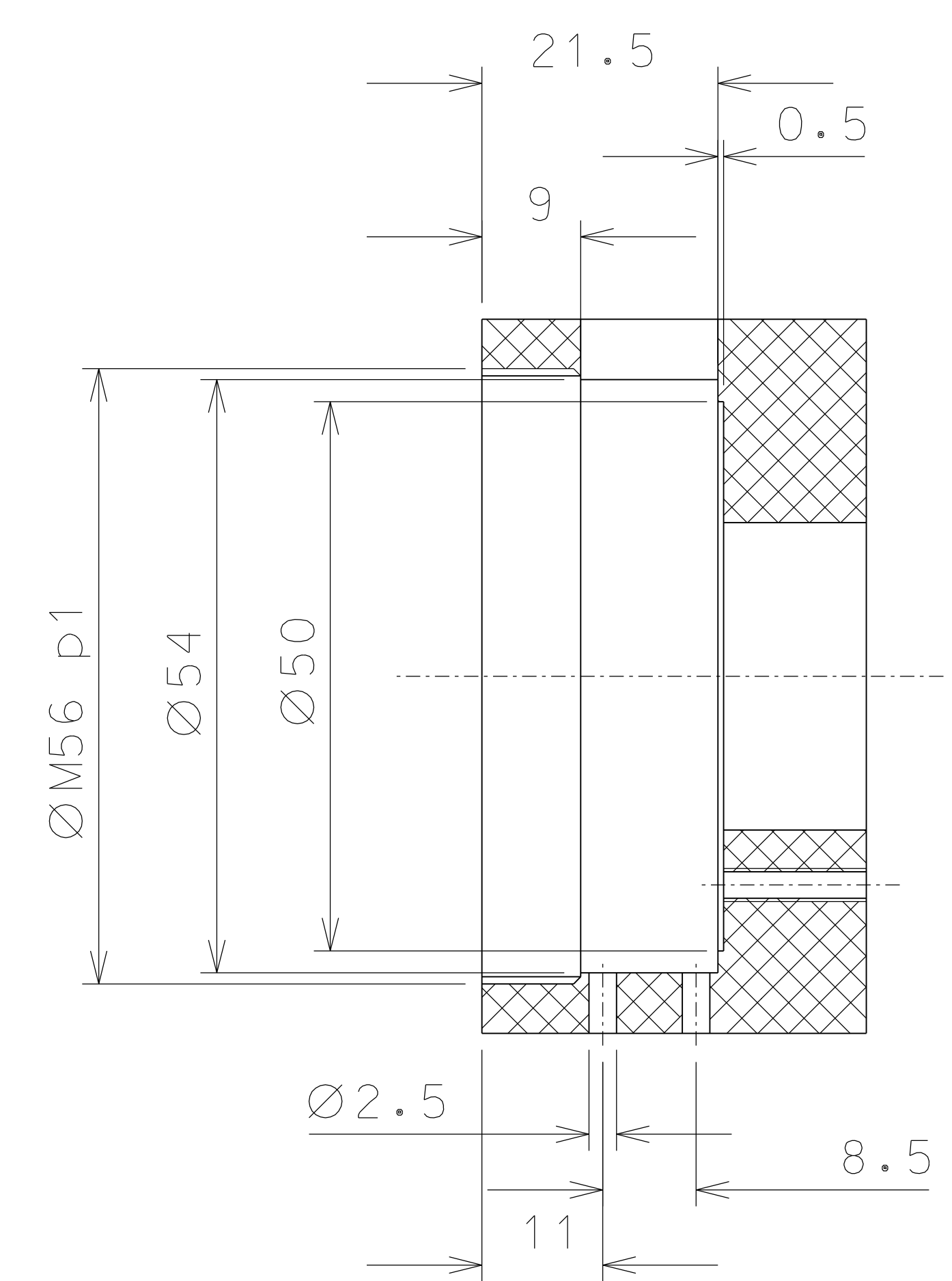


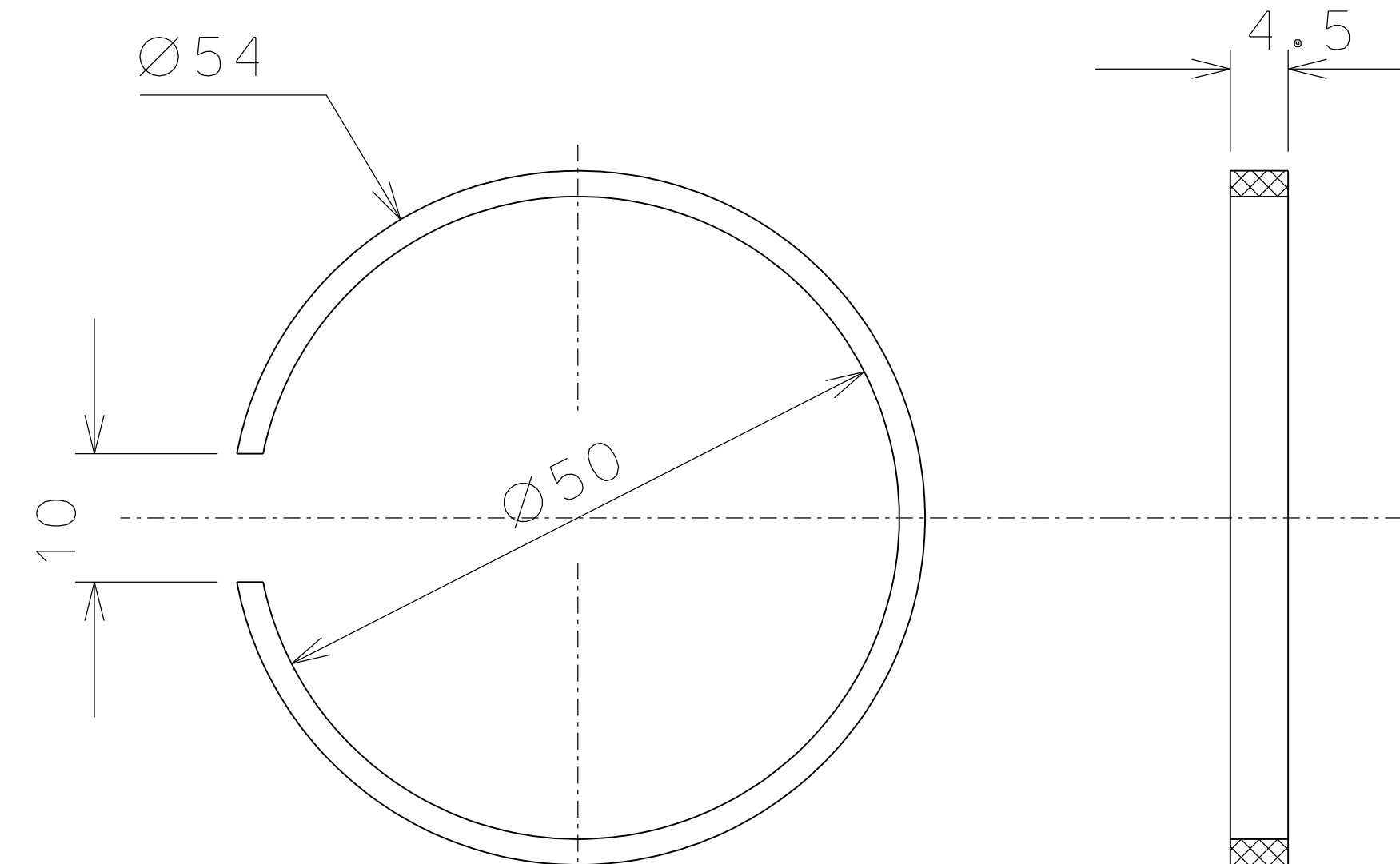
35



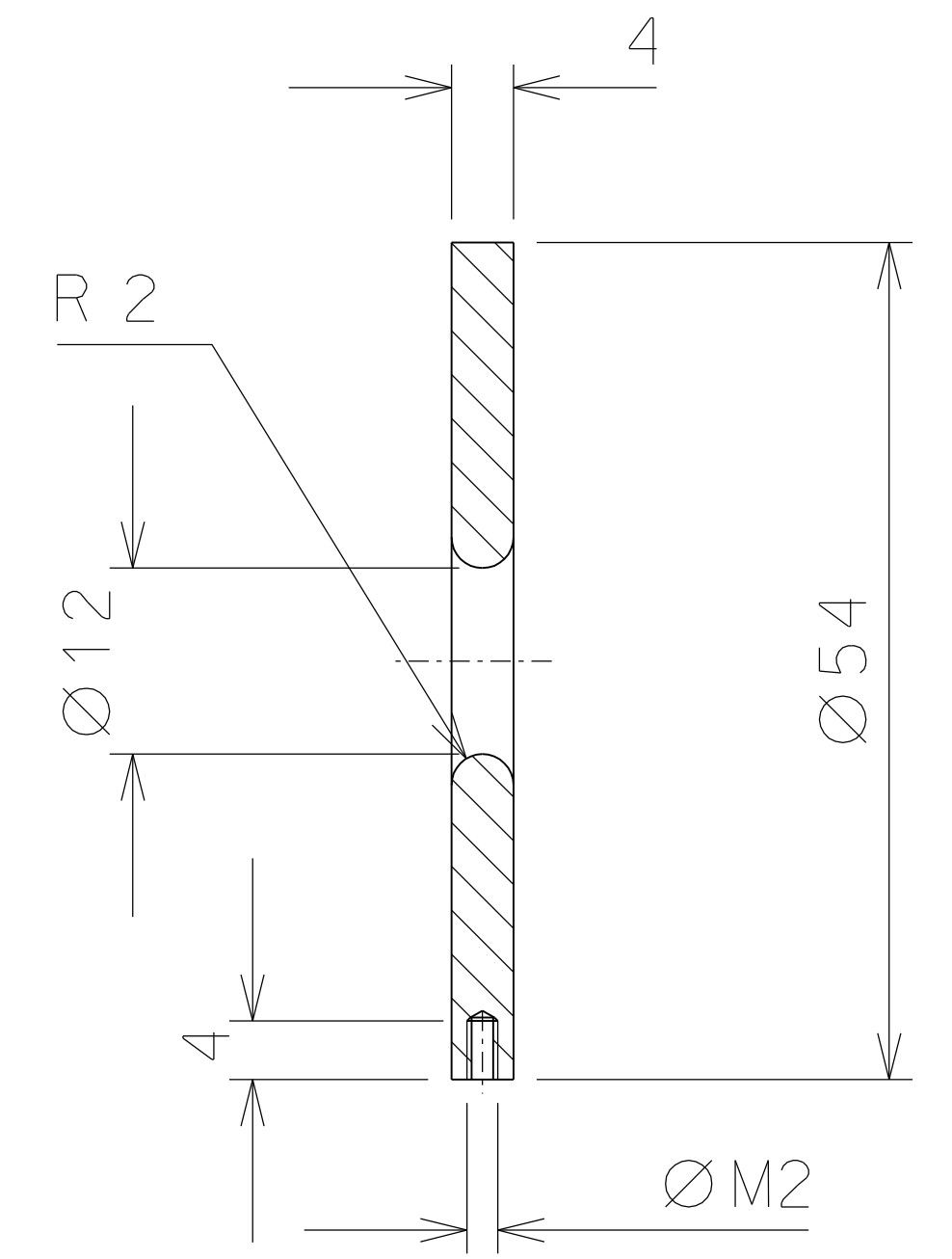
39



34

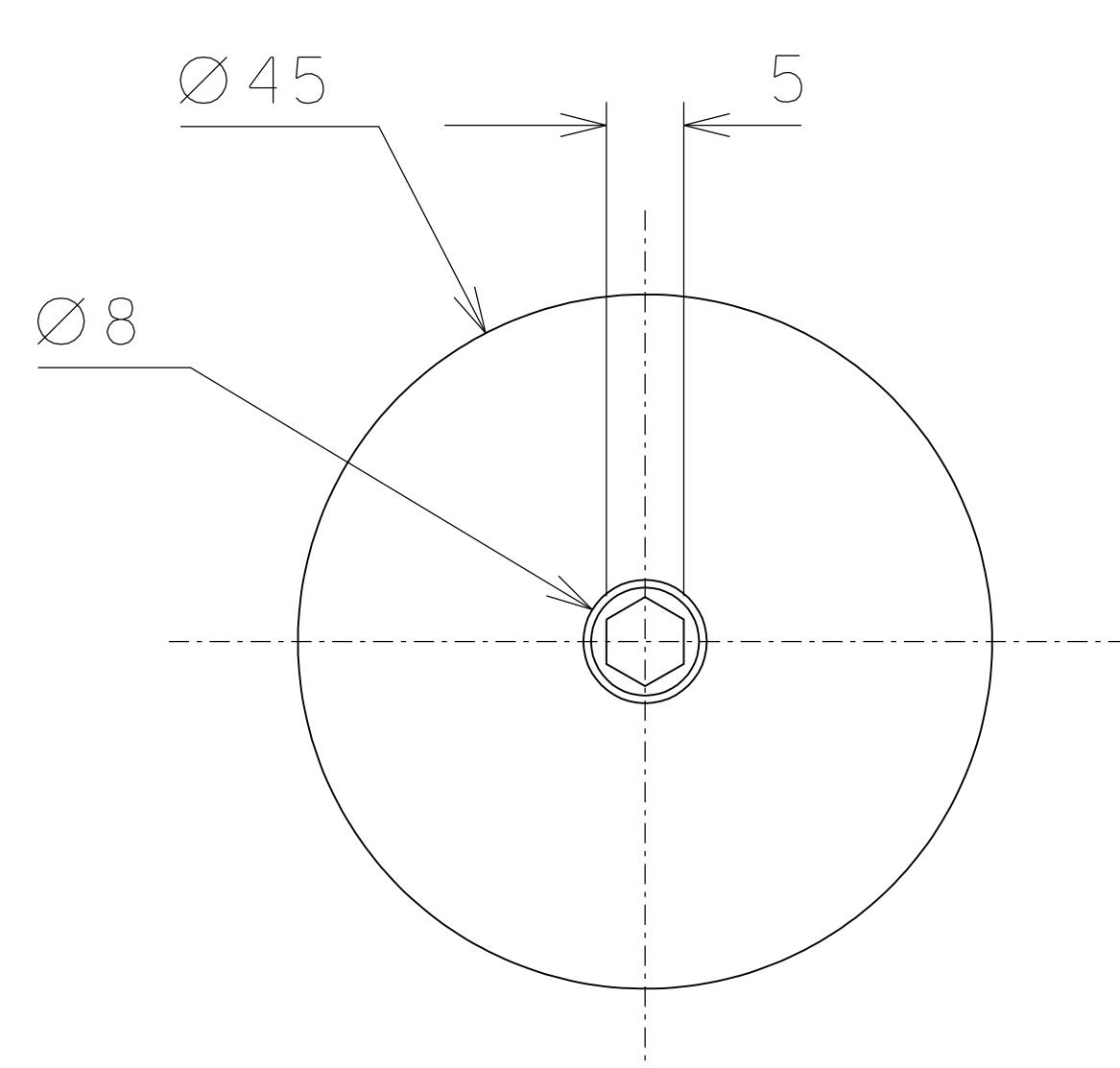
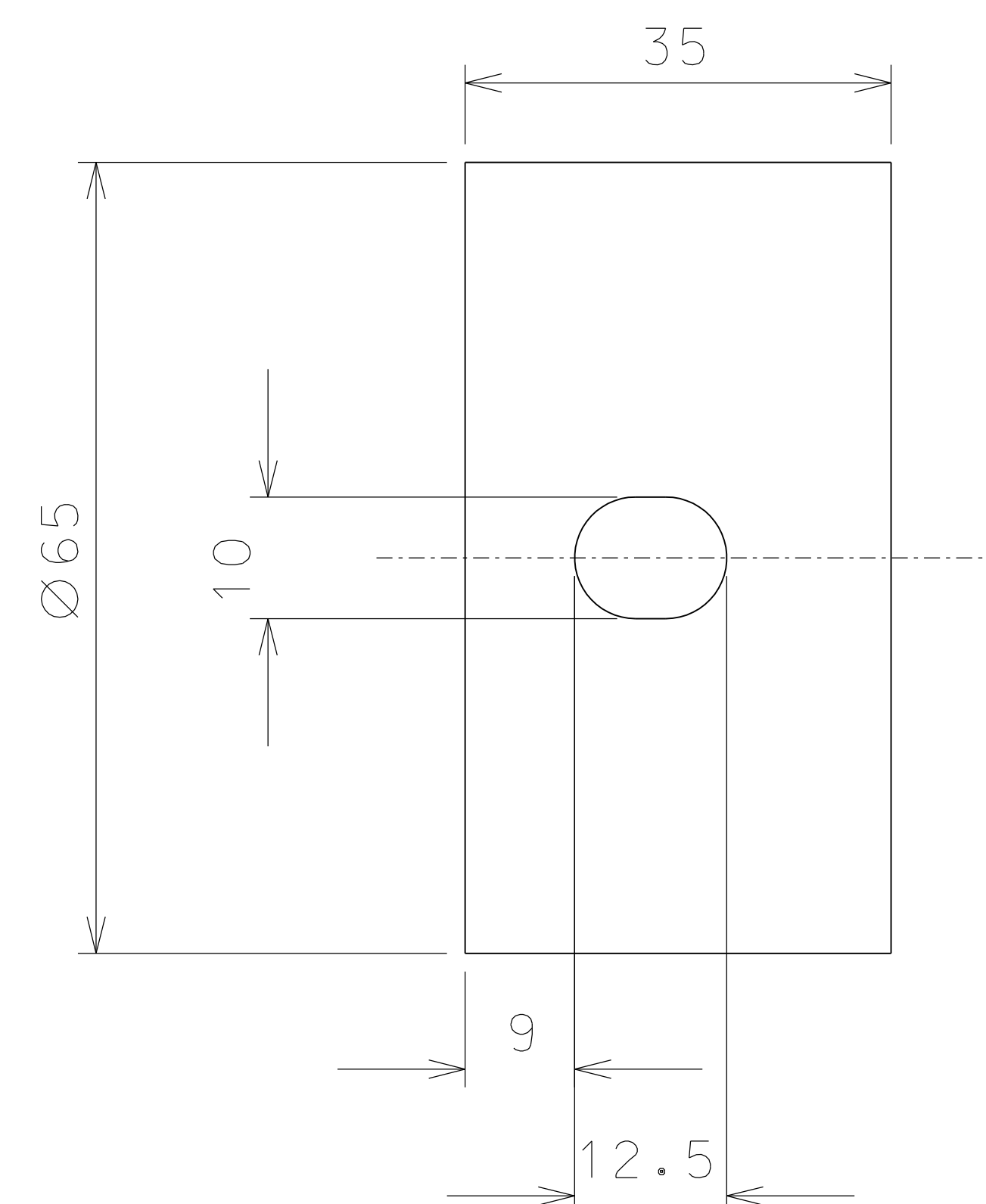


37



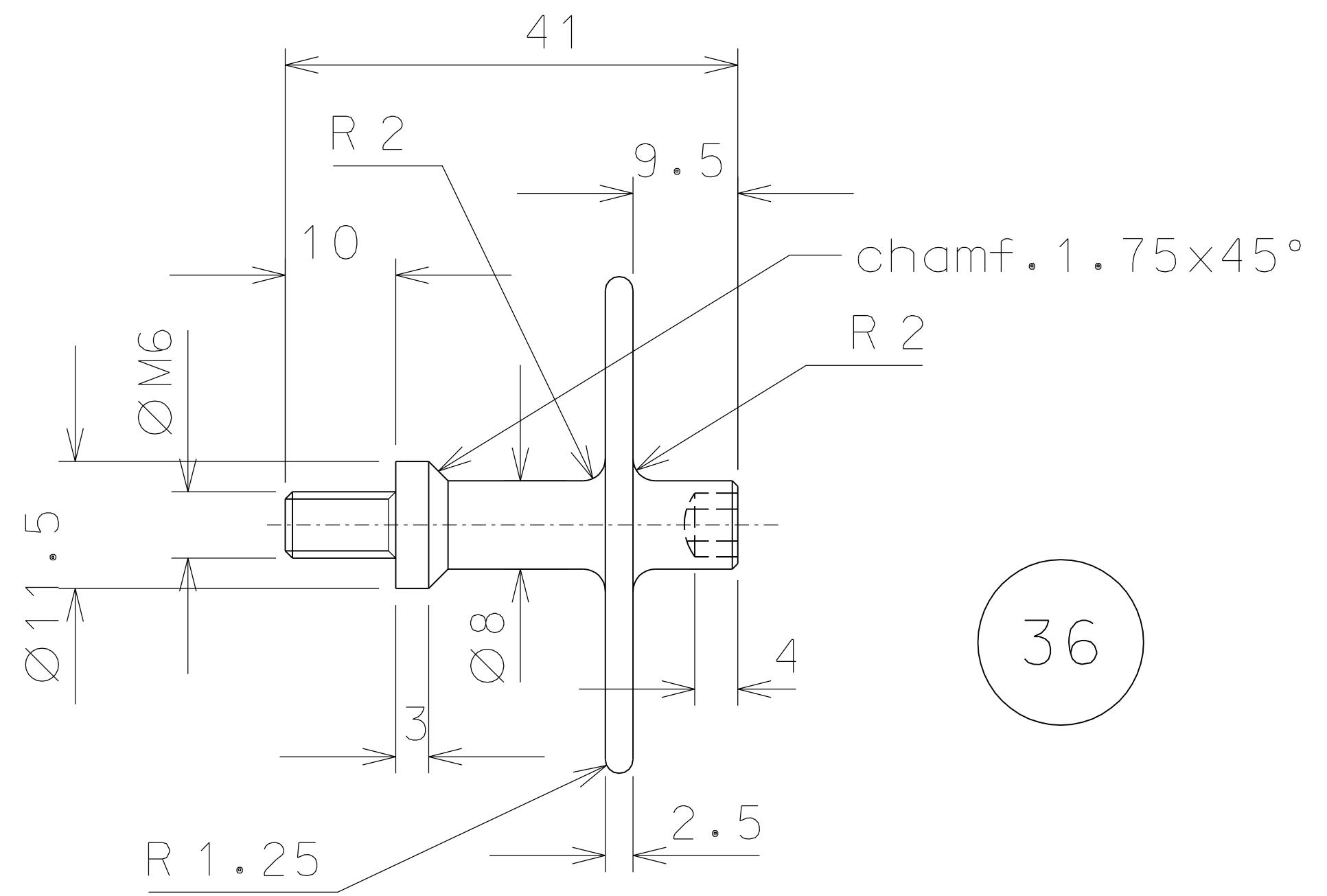
polished and gold plated

38



polished and gold plated

36



ref.	note	date	signature
modifications			
38	4 bronze B14	1/1	
37	2 peek	1/1	
36	2 bronze B14	1/1	
35	2 EN 6082	1/1	
34	2 peek	1/1	
39	2 peek	1/1	
ref.	pieces	mat. and treatments	scale

General machining tolerances UNI 5307-63								
Dimensions	< 6	> 6-30	> 30-120	> 120-315	> 315-1000	> 1000-2000	> 2000-4000	> 4000
linear Toll.	± 0.1	± 0.2	± 0.3	± 0.5	± 0.8	± 1.2	± 2	± 3
angular Toll.	± 1	± 30'	± 20'	± 10' referred to the shortest side				

designed for	R.De Salvo		
draw. by	G. Gennaro-PROMECA		
date	9-04-08	scale	1/1
title	TILTMETER DETAILS		
detail from	1003	scale	A 2