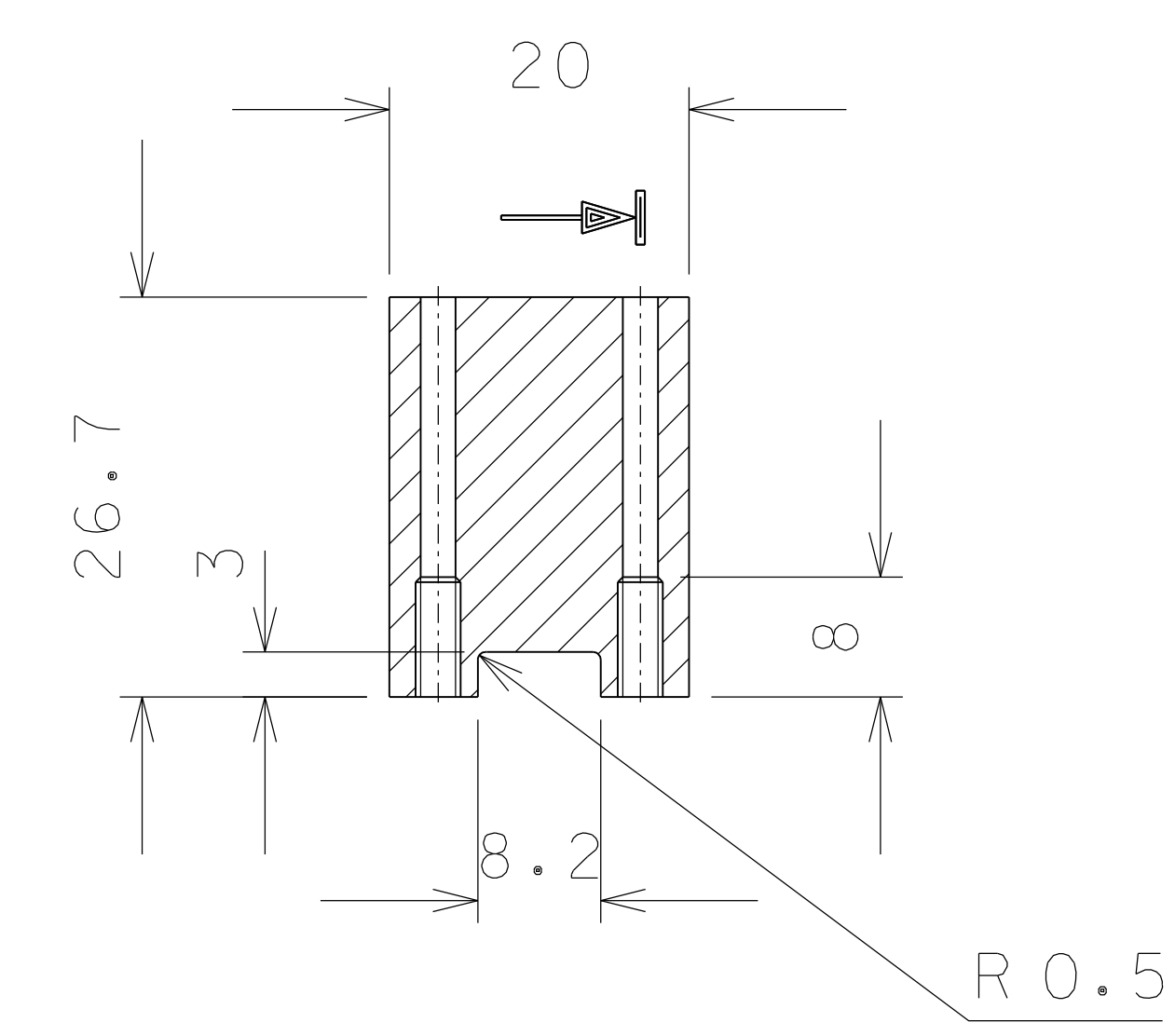
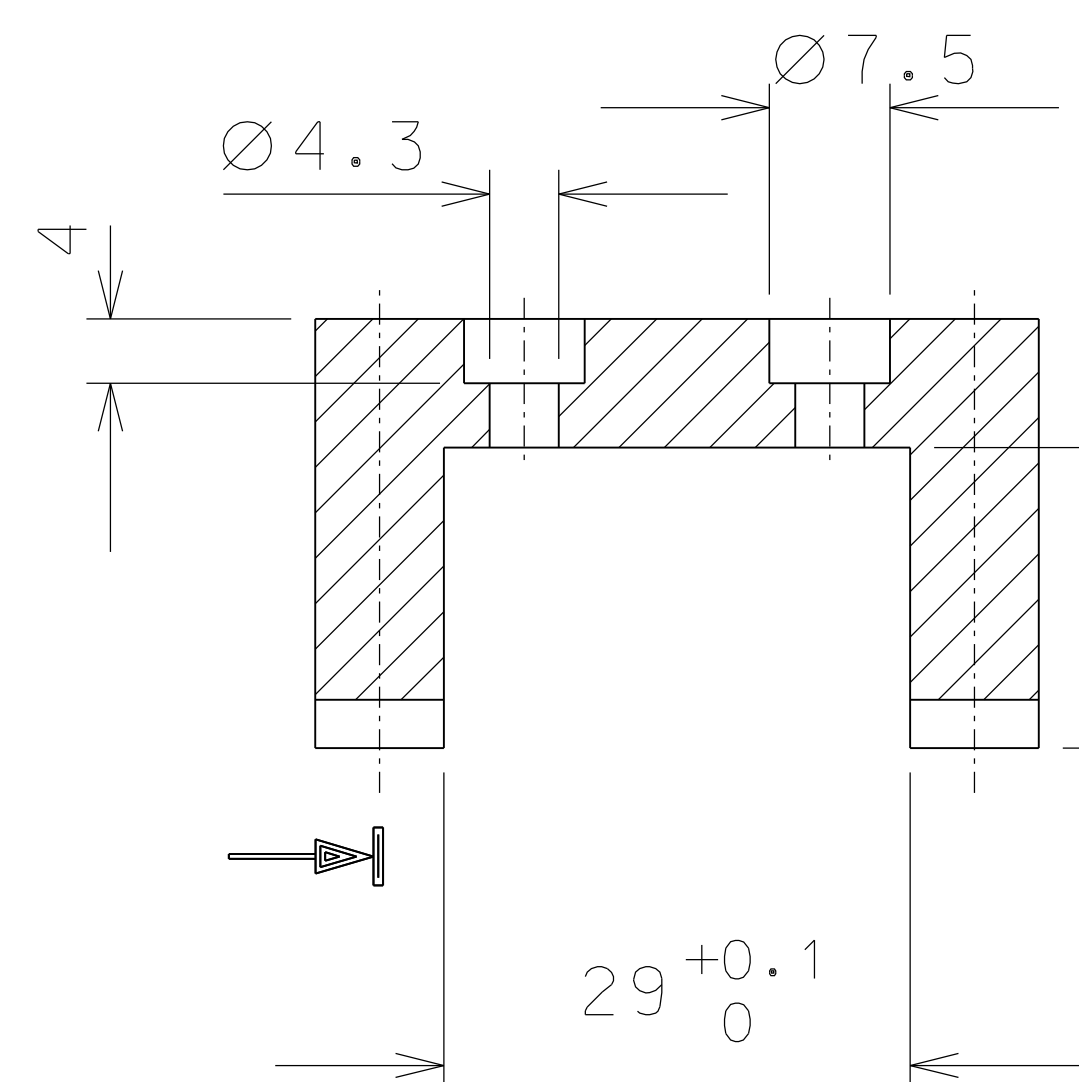
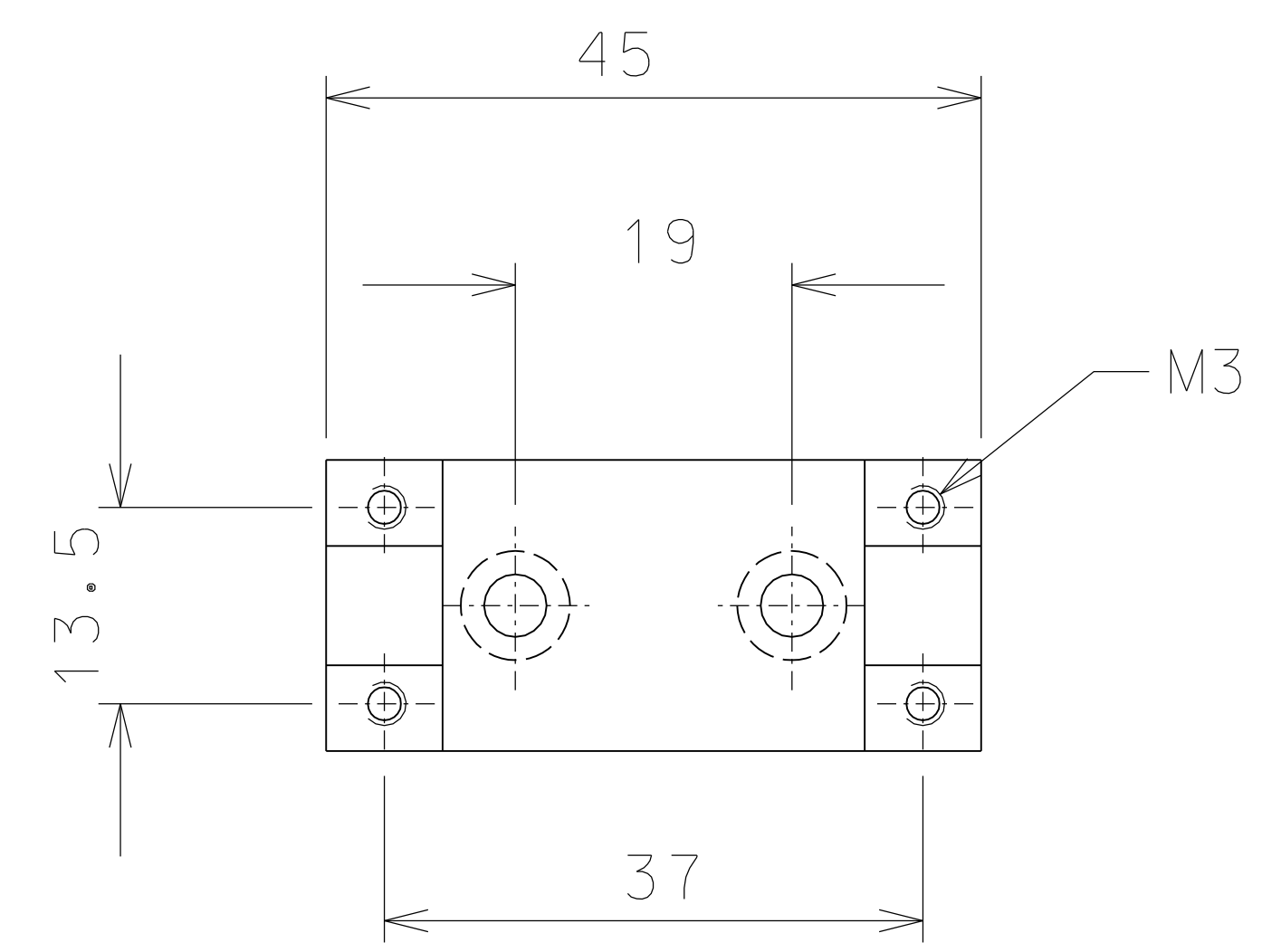
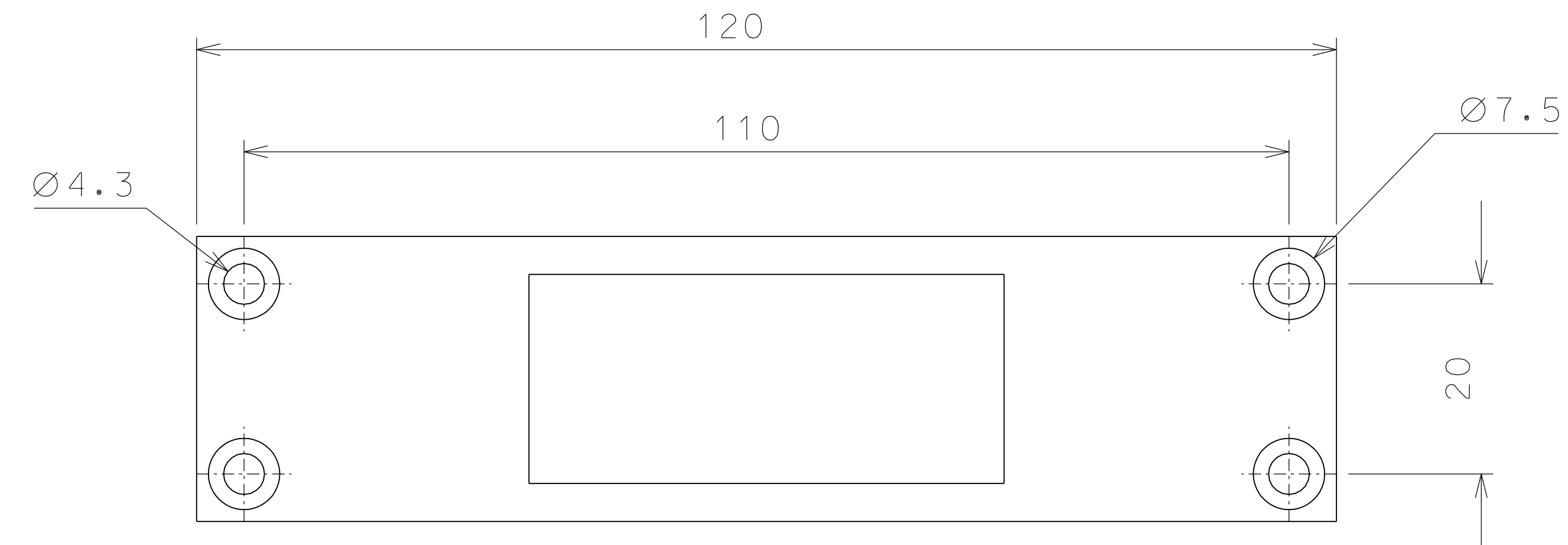
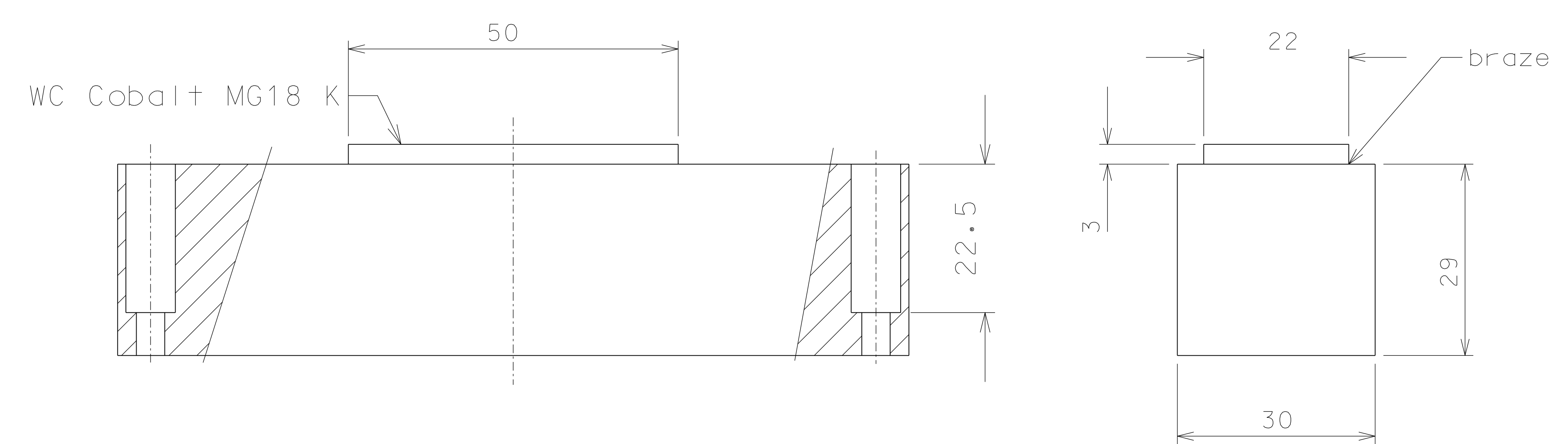


7

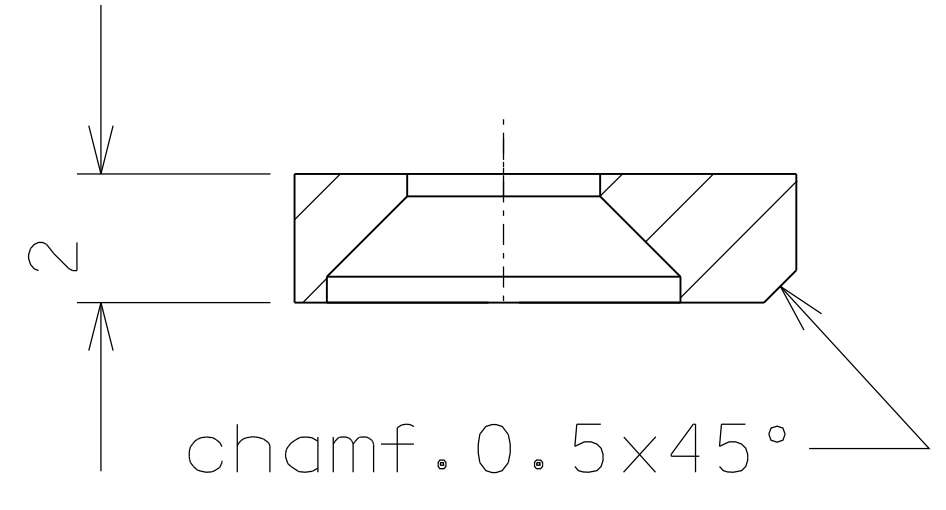
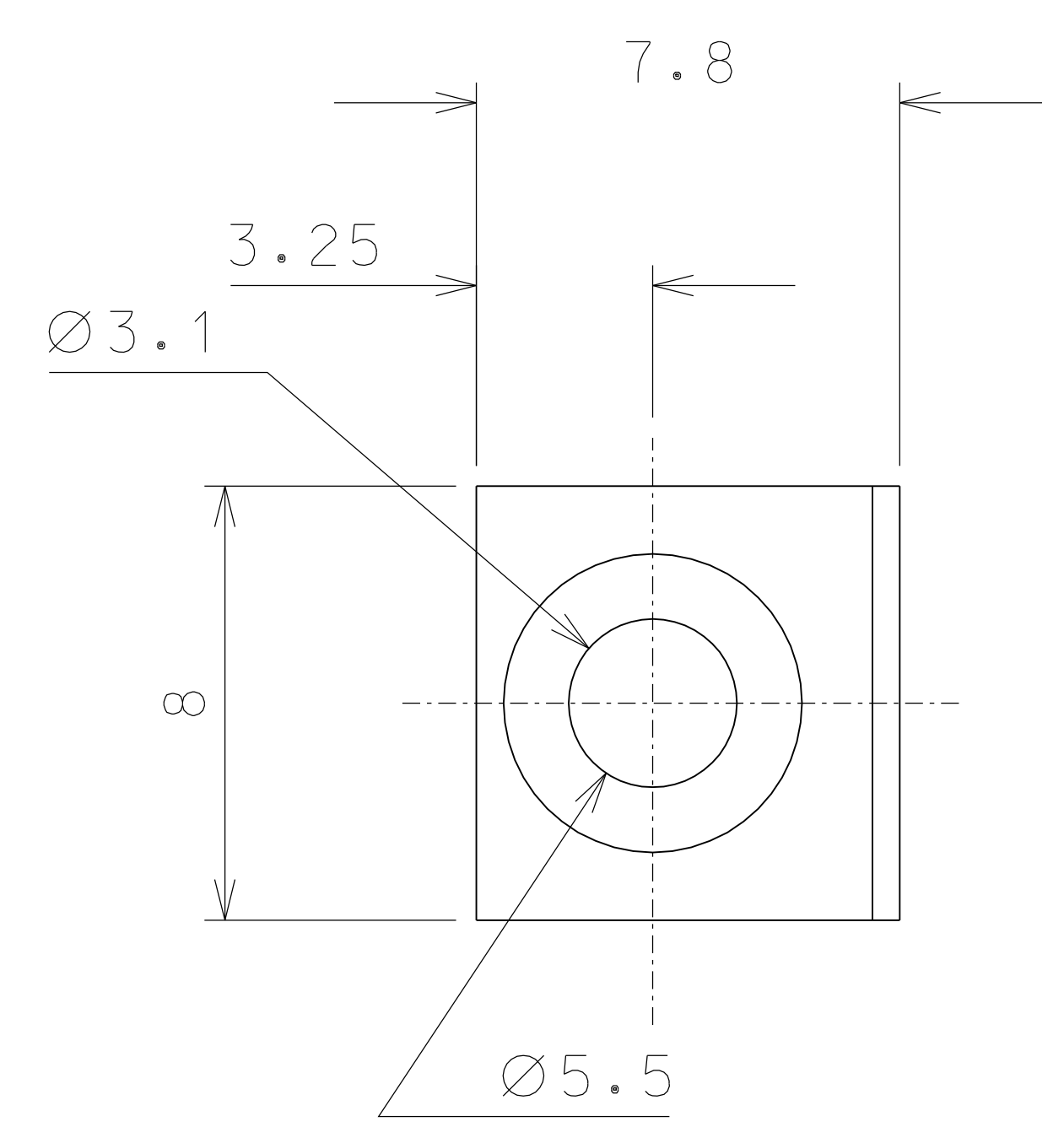


Partial assembly (before final machining)

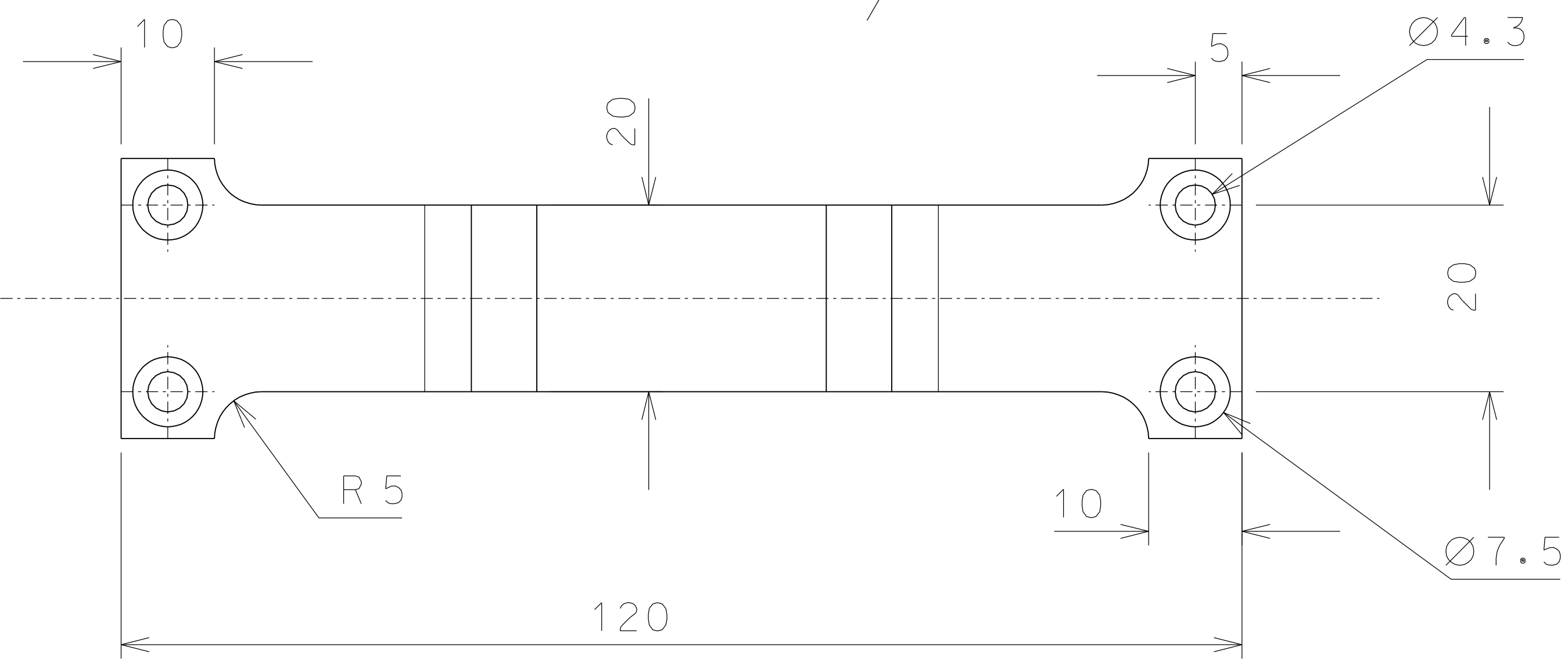
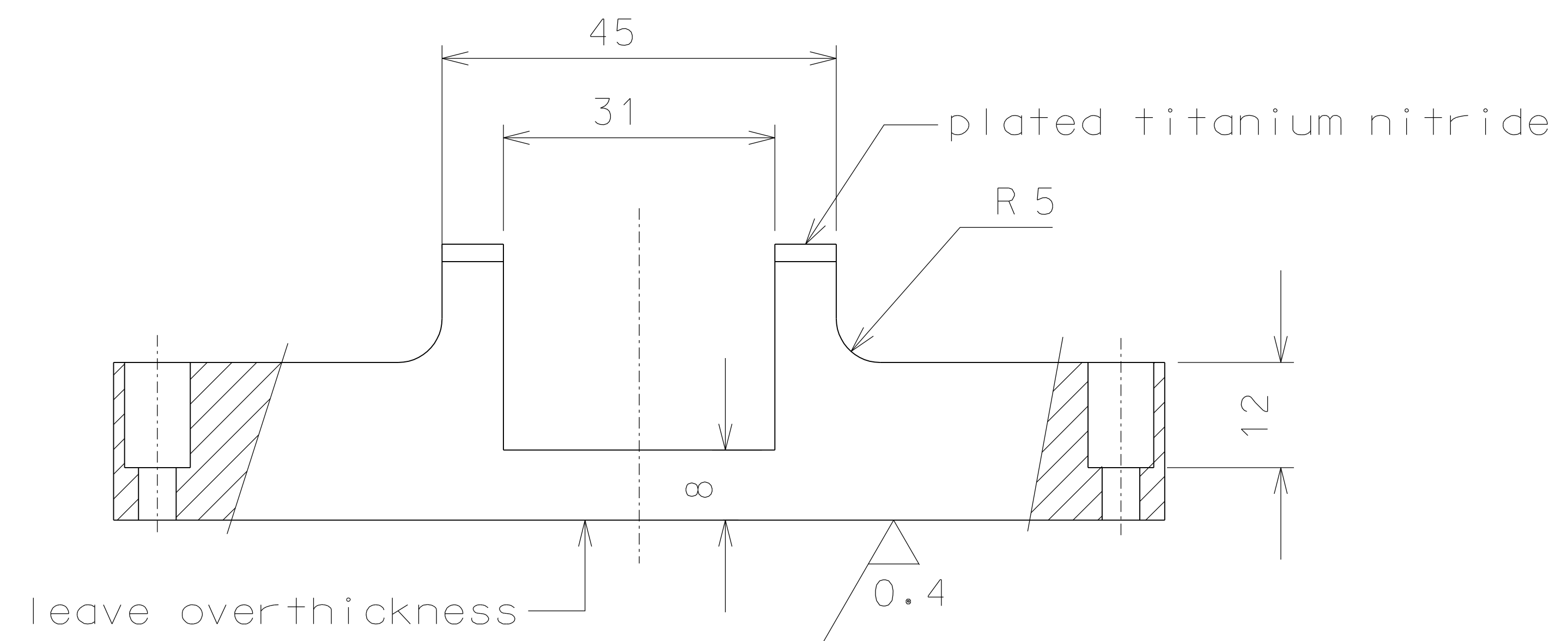


21

subassembly of part 21 and 22

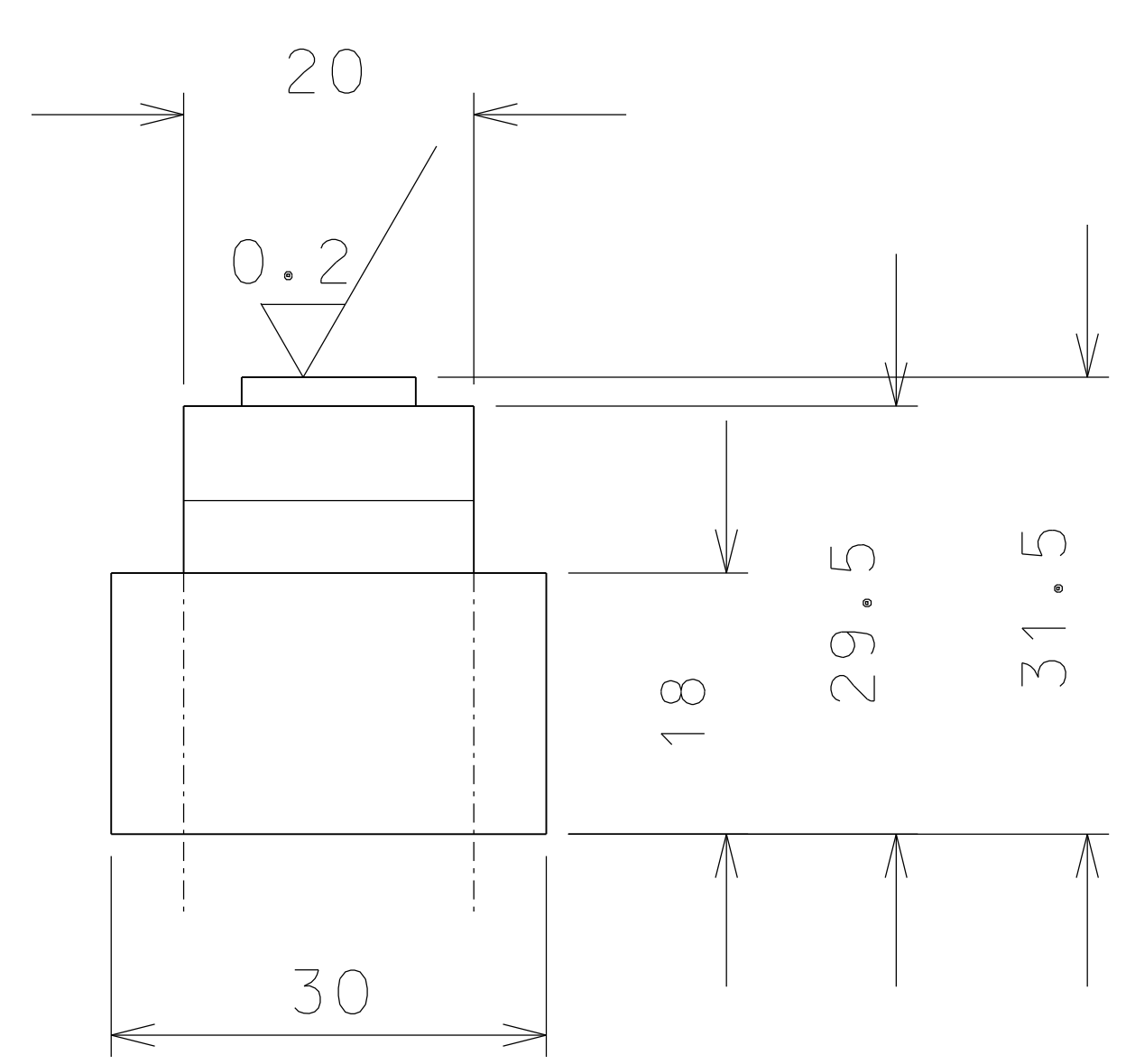


18



21

subassembly of part 21 and 22



ref.	pieces	mat. and treatments	scale	ref.	pieces	mat. and treatments	scale
21	1	bronze B14	1/1				
18	4	AISI 316	4/1				
7	1	AISI 316	1/1				

General machining tolerances UNI 5307-63								
Dimensions	< 6	> 6-30	> 30-120	> 120-315	> 315-1000	> 1000-2000	> 2000-4000	> 4000
Linear Toll.	± 0.1	± 0.2	± 0.3	± 0.5	± 0.8	± 1.2	± 2	± 3
angular Toll.	± 1'	± 30'	± 20'	± 10' referred to the shortest side				

	LIGO PROJECT		designed for <b>R.De Salvo</b>	
	draw. by <b>G.Gennaro-PROMECC</b>		date 8-04-08	
	title <b>TILTMETER</b>		scale 1/1	
	DETAILS		LIGO-D081007-00-D	
	detail from	1001	A	2