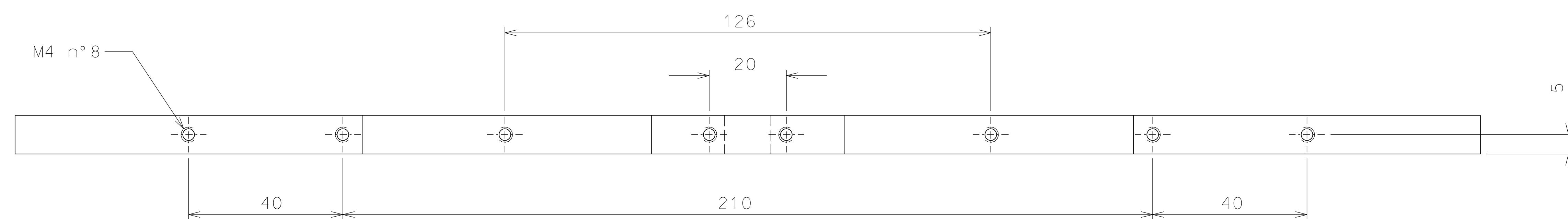
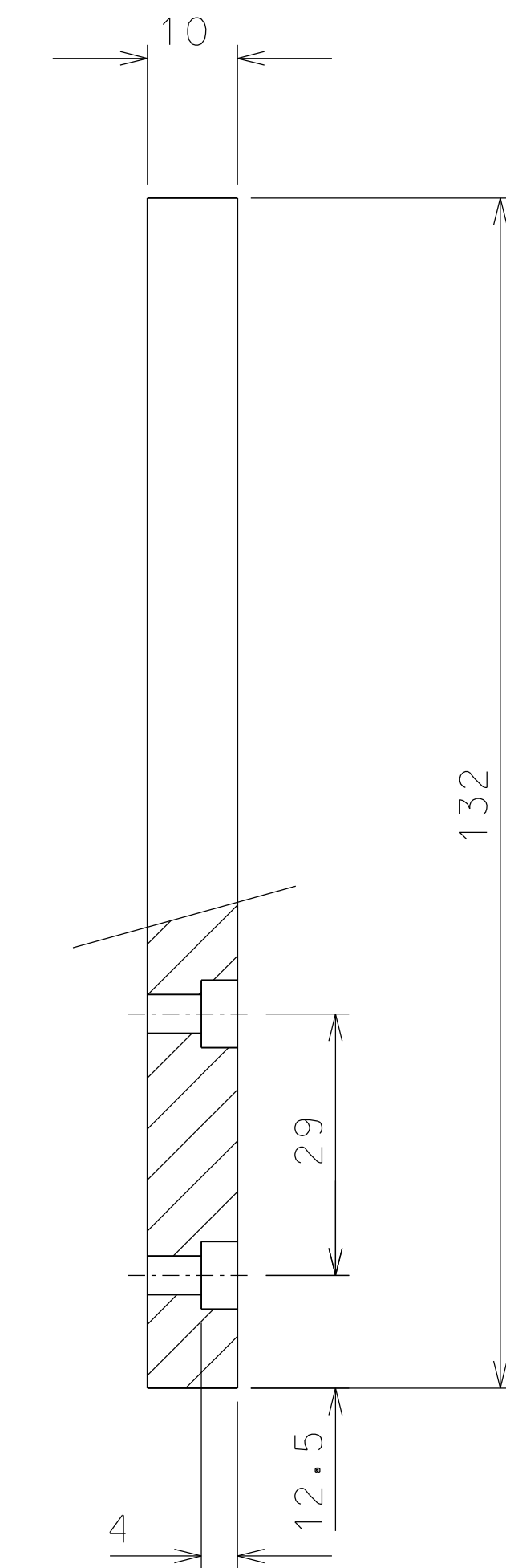
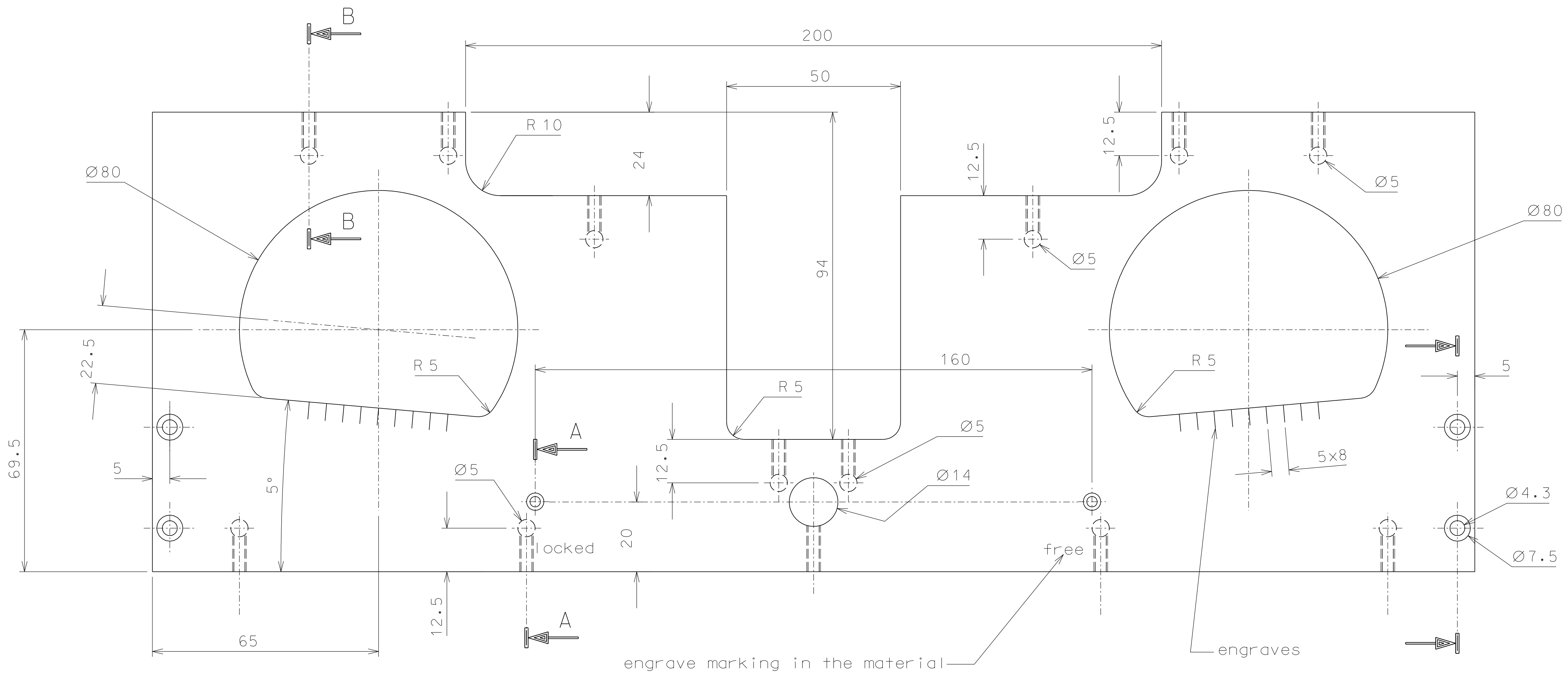
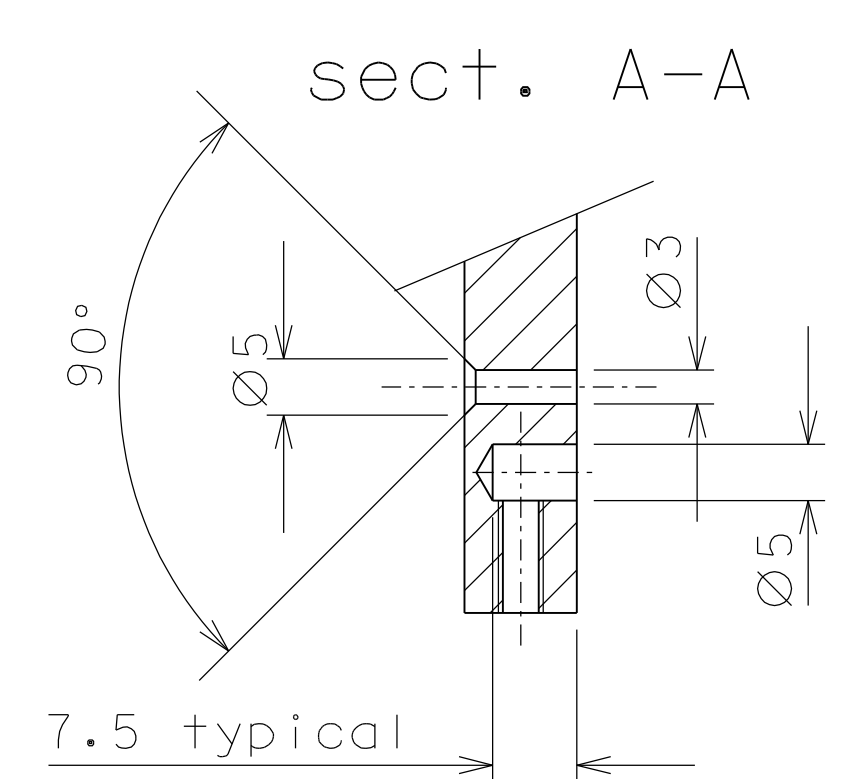
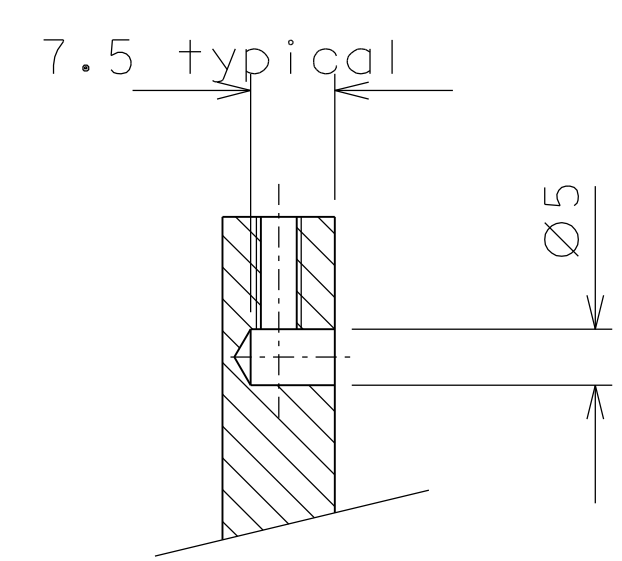
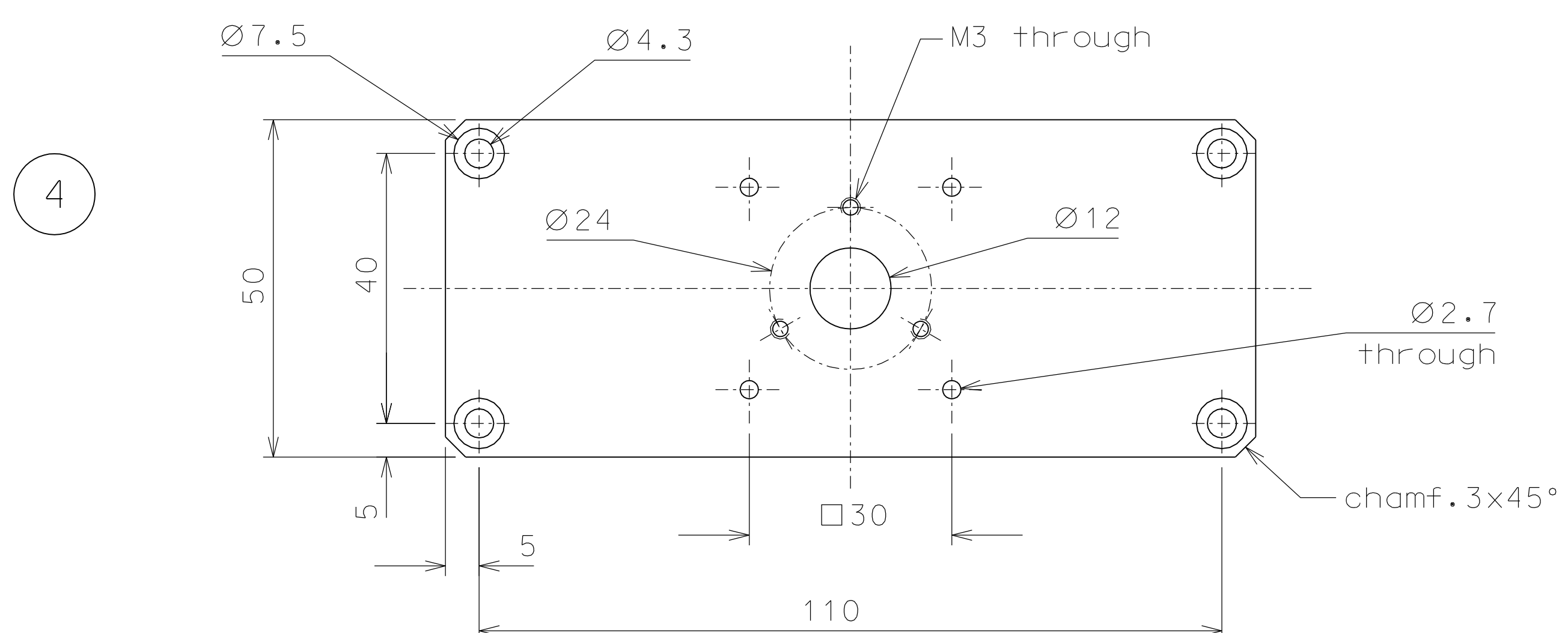
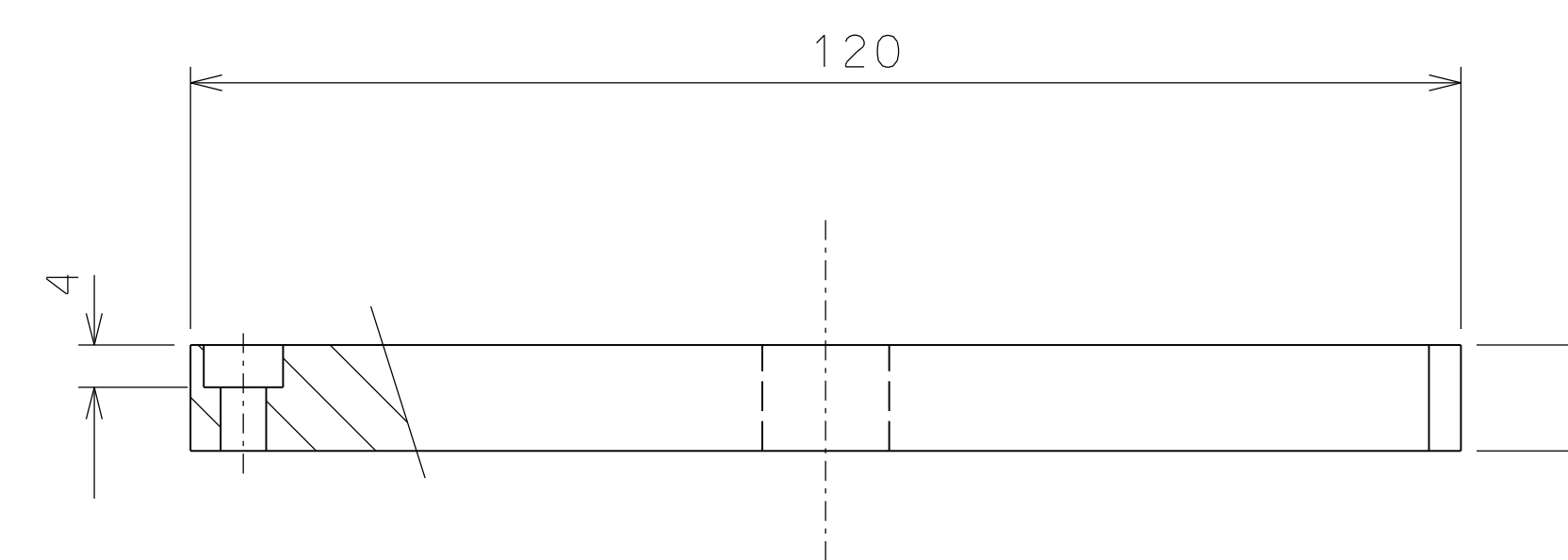


sect. B-B

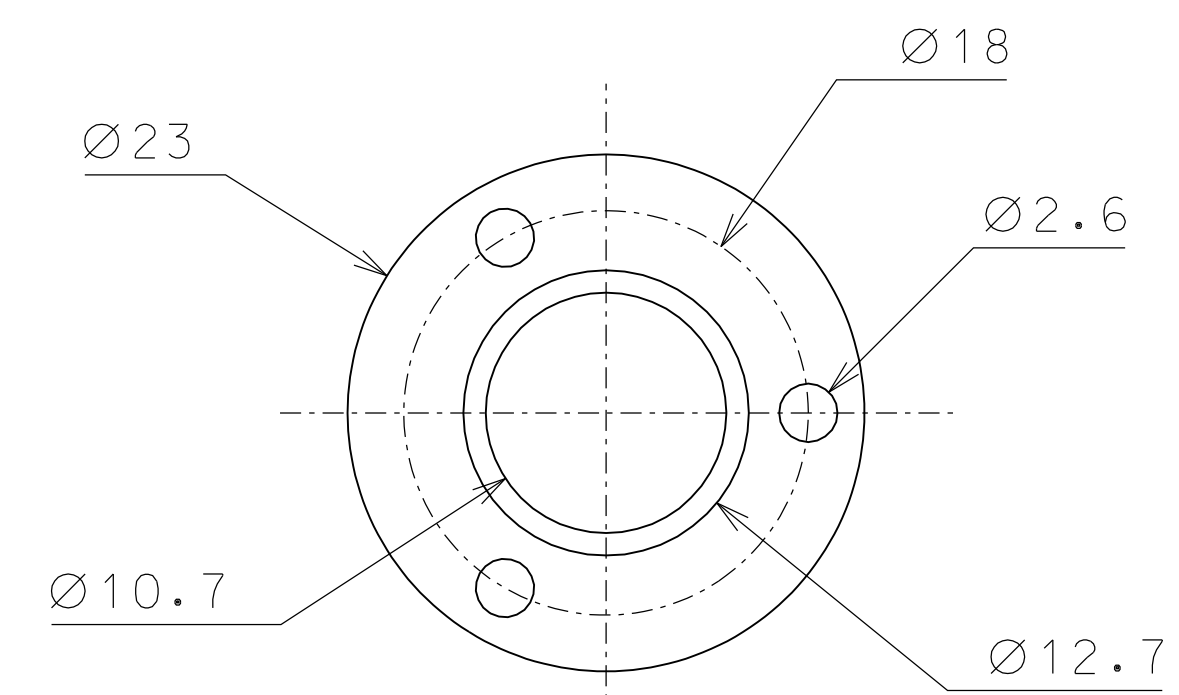


3

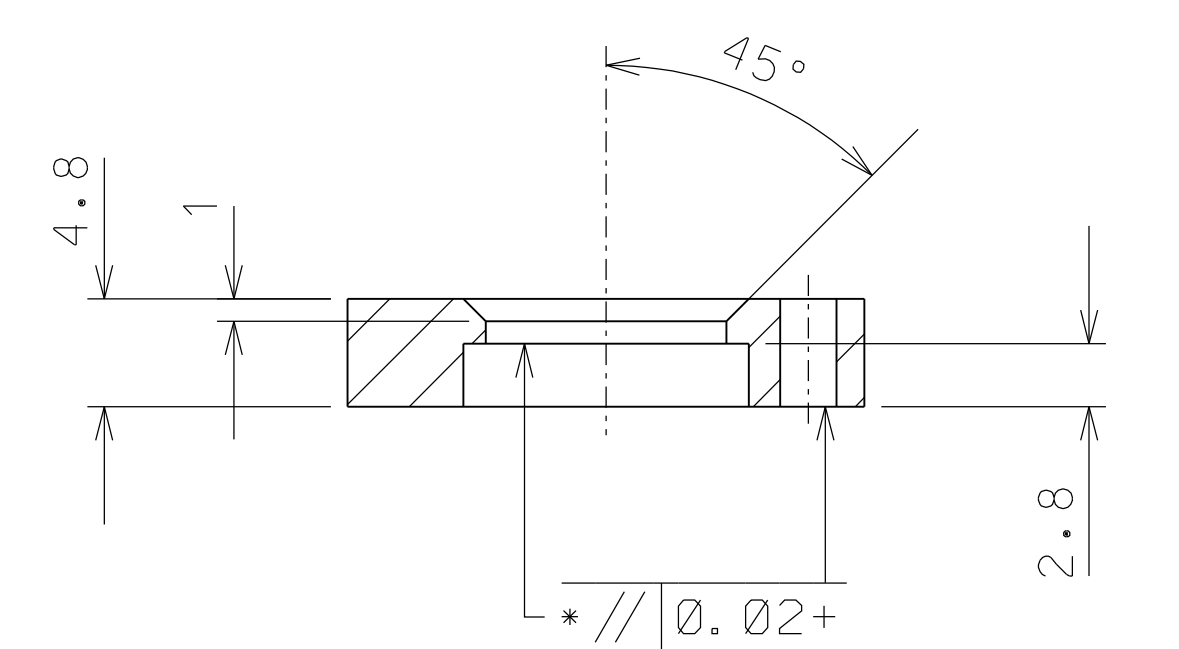
Note: All horizontal surface of panel 3 and panel 6 should be machined at the same time to form matched pairs



4



9



ref.	note	date	signature
modifications			
9	2	EN 6082	2/1
4	2	EN 6082	1/1
3	1	EN 6082	1/1

General machining tolerances UNI 5307-63							
Dimensions	< 6	> 6-30	> 30-120	> 120-315	> 315-1000	> 1000-2000	> 2000-4000
linear Toli.	± 0.1	± 0.2	± 0.3	± 0.5	± 0.8	± 1.2	± 2
angular Toli.	± 1'	± 30'	± 20'	± 10' referred to the shortest side			

designed for	R.De Salvo		
draw. by	G.Gennaro-PROMEC		
date	7-04-08	scale	1/1
title	LIGO PROJECT		
ref.	LIGO-D081005-00-D		
part	1001	scale	A 1

TILTMETER
DETAILS