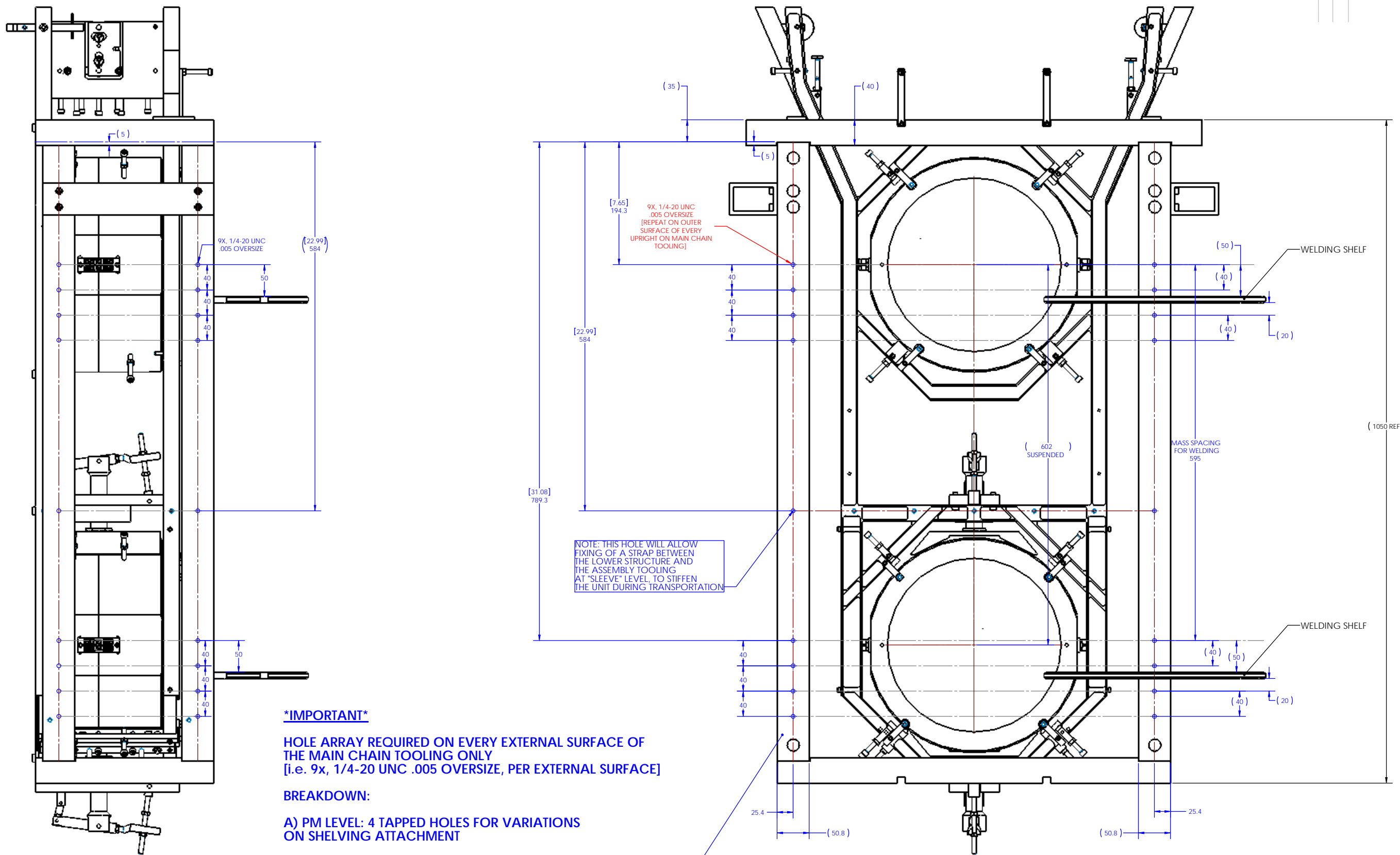


REV.	DATE	DCN #	DRAWING TREE #



NOTE: THIS HOLE WILL ALLOW
FIXING OF A STRAP BETWEEN
THE LOWER STRUCTURE AND
THE ASSEMBLY TOOLING
AT "SLEEVE" LEVEL, TO STIFFEN
THE UNIT DURING TRANSPORTATION

IMPORTANT

HOLE ARRAY REQUIRED ON EVERY EXTERNAL SURFACE OF
THE MAIN CHAIN TOOLING ONLY
[i.e. 9x, 1/4-20 UNC .005 OVERSIZE, PER EXTERNAL SURFACE]

BREAKDOWN:

A) PM LEVEL: 4 TAPPED HOLES FOR VARIATIONS
ON SHELVING ATTACHMENT

B) CENTRAL: ONE HOLE FOR ATTACHING STIFFENING STRAP

C) OPTIC LEVEL: 4 TAPPED HOLES FOR VARIATIONS
ON SHELVING ATTACHMENT

NOTES: (UNLESS OTHERWISE SPECIFIED)		PARTS LIST	
1. DO NOT SCALE FROM DRAWING.		CALIFORNIA INSTITUTE OF TECHNOLOGY MASSACHUSETTS INSTITUTE OF TECHNOLOGY IGR, GLASGOW UNIVERSITY GEO 400 GROUP	
DIMENSIONS ARE IN MILLIMETERS		LIGO	
TOLERANCES:		SYSTEM ADVANCED LIGO	
± .12		SUB-SYSTEM SUS	
± .05		NEXT ASSY Monolithic Assembly	
ANGULAR ± 0.5°		PART NAME CONFIRMATION OF TOOLING HOLES	
MATERIAL		DRAWN NAME DATE	
FINISH		CHKD BLANKS LOCAL	
---		D	
---		D080701	
---		00	
---		SCALE: 1:16 PROJECTION: SHEET 1 OF 1	