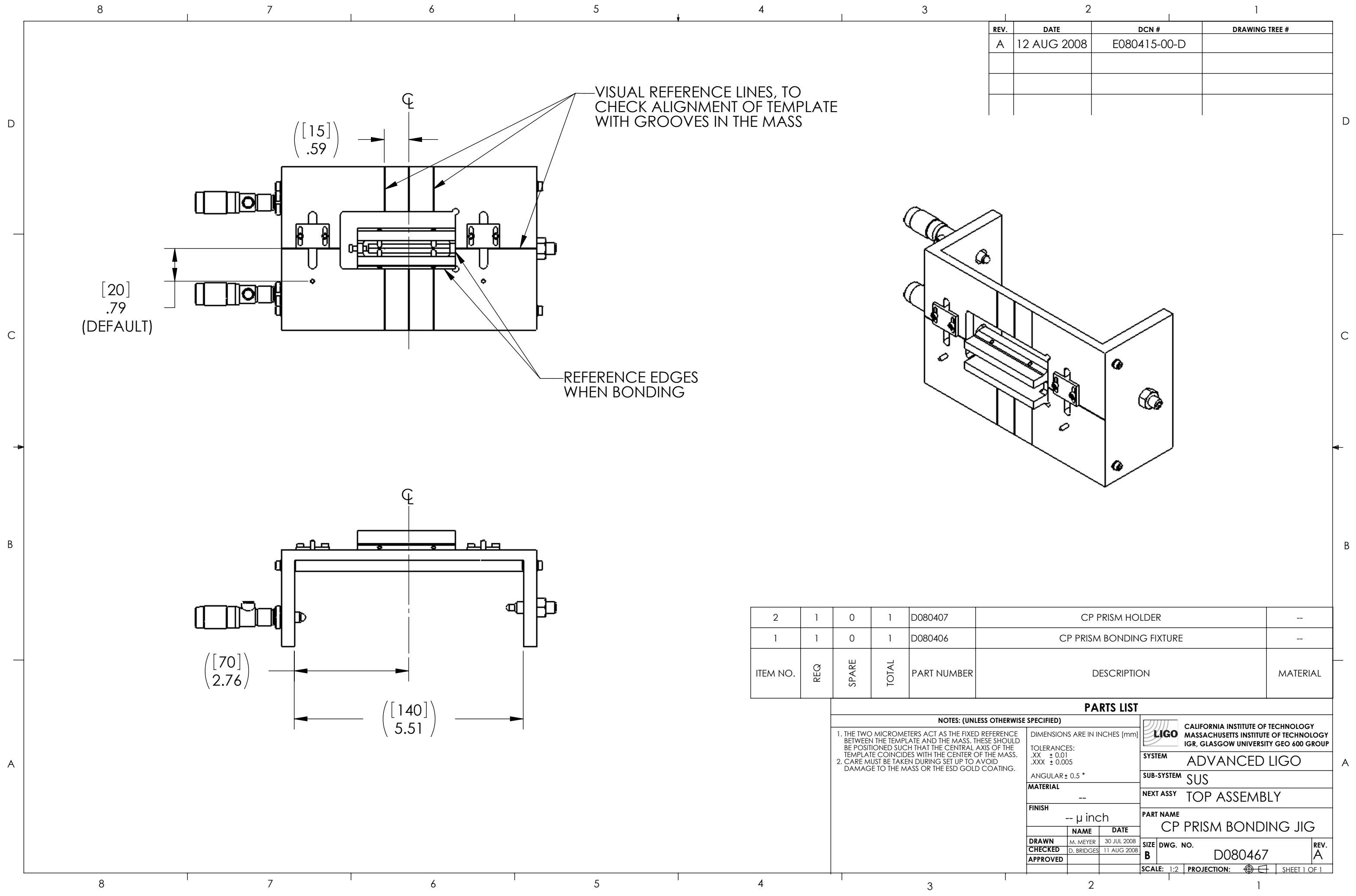


REV.	DATE	DCN #	DRAWING TREE #
A	12 AUG 2008	E080415-00-D	



ITEM NO.	REQ	SPARE	TOTAL	PART NUMBER	DESCRIPTION	MATERIAL
2	1	0	1	D080407	CP PRISM HOLDER	--
1	1	0	1	D080406	CP PRISM BONDING FIXTURE	--

PARTS LIST

NOTES: (UNLESS OTHERWISE SPECIFIED)

- THE TWO MICROMETERS ACT AS THE FIXED REFERENCE BETWEEN THE TEMPLATE AND THE MASS. THESE SHOULD BE POSITIONED SUCH THAT THE CENTRAL AXIS OF THE TEMPLATE COINCIDES WITH THE CENTER OF THE MASS.
- CARE MUST BE TAKEN DURING SET UP TO AVOID DAMAGE TO THE MASS OR THE ESD GOLD COATING.

DIMENSIONS ARE IN INCHES [mm]

TOLERANCES:
 .XX ± 0.01
 .XXX ± 0.005

ANGULAR ± 0.5 °

MATERIAL: --

FINISH: -- μ inch

	NAME	DATE
DRAWN	M. MEYER	30 JUL 2008
CHECKED	D. BRIDGES	11 AUG 2008
APPROVED		

SIZE	DWG. NO.	REV.
B	D080467	A

SCALE: 1:2 PROJECTION: SHEET 1 OF 1

LIGO CALIFORNIA INSTITUTE OF TECHNOLOGY
 MASSACHUSETTS INSTITUTE OF TECHNOLOGY
 IGR, GLASGOW UNIVERSITY GEO 600 GROUP

SYSTEM: ADVANCED LIGO
 SUB-SYSTEM: SUS
 NEXT ASSY: TOP ASSEMBLY

PART NAME: CP PRISM BONDING JIG