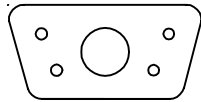
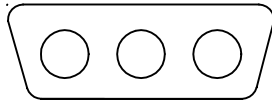


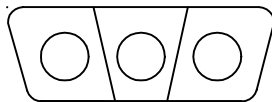
DESCRIPTION: POWER COMBO RIGHT ANGLE



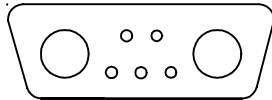
5W1



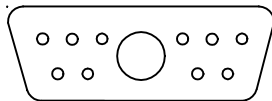
3W3



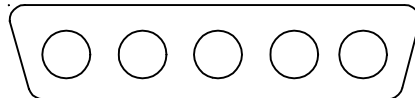
3W3K



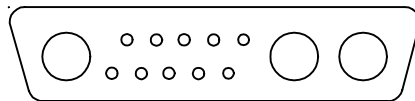
7W2



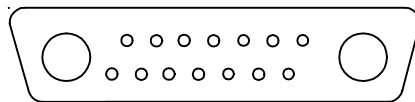
11W1



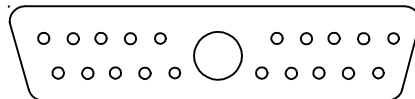
5W5



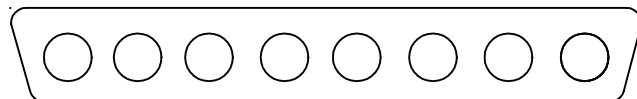
13W3



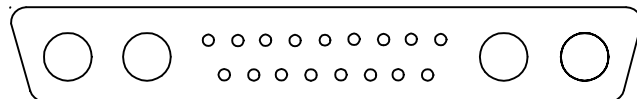
17W2



21W1

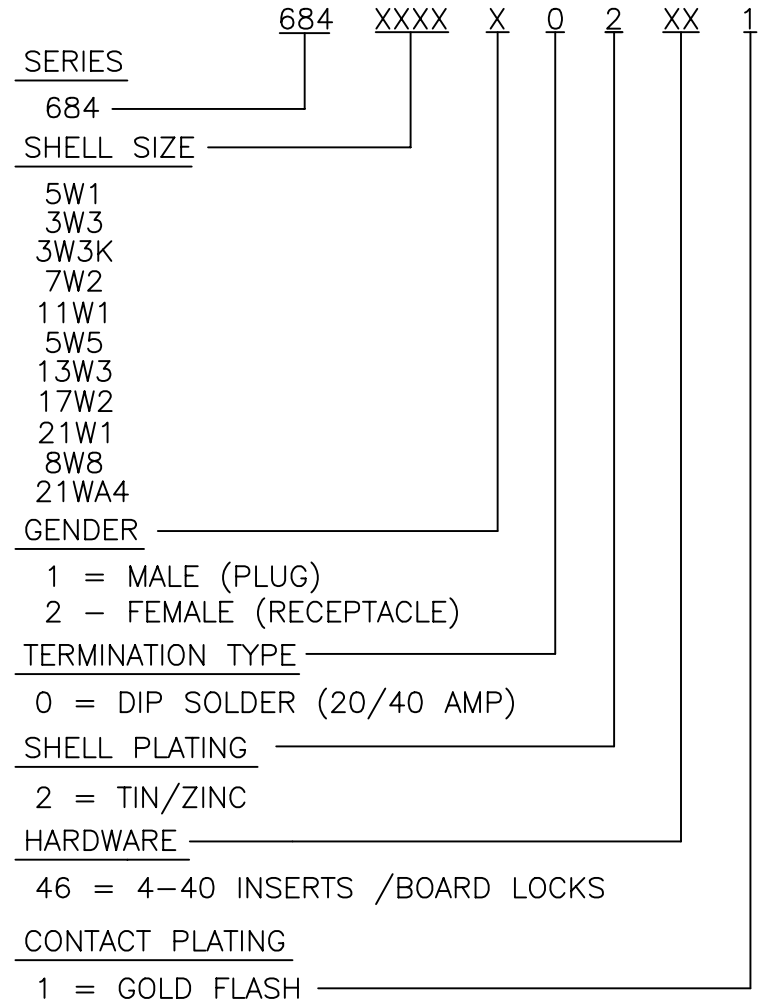


8W8



21WA4

PART NUMBER KEY



THESE DRAWINGS AND SPECIFICATIONS ARE THE PROPERTY OF NorComp AND SHALL NOT BE REPRODUCED, COPIED OR USED AS THE BASIS FOR THE MANUFACTURE OR SALE OF APPARATUS WITHOUT WRITTEN PERMISSION.

DRAWN:
PAM JENKINS

DATE:
6-3-02

CHECKED:

DATE:

SCALE:

SHEET 1 OF 1

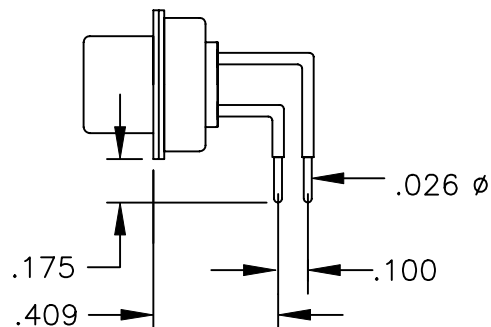
REV 1

DWG NO.

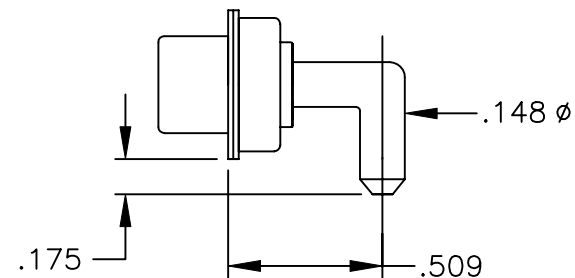
684 SERIES CONNECTORS

NorComp

DESCRIPTION: SIGNAL/POWER CONTACTS

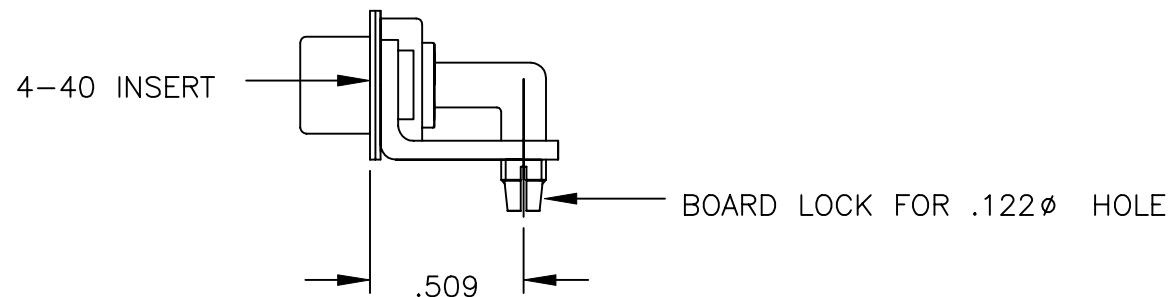


SIGNAL CONTACTS



20/40 AMP POWER CONTACTS

MOUNTING HARDWARE



NOTE: SIGNAL AND POWER CONTACTS COME PRE-LOADED INTO INSULATOR.



THESE DRAWINGS AND SPECIFICATIONS
ARE THE PROPERTY OF NorComp AND
SHALL NOT BE REPRODUCED, COPIED
OR USED AS THE BASIS FOR THE
MANUFACTURE OR SALE OF APPARATUS
WITHOUT WRITTEN PERMISSION.

DRAWN:
PAM JENKINS

DATE:
6-5-02

CHECKED:

DATE:

NorComp

SCALE:

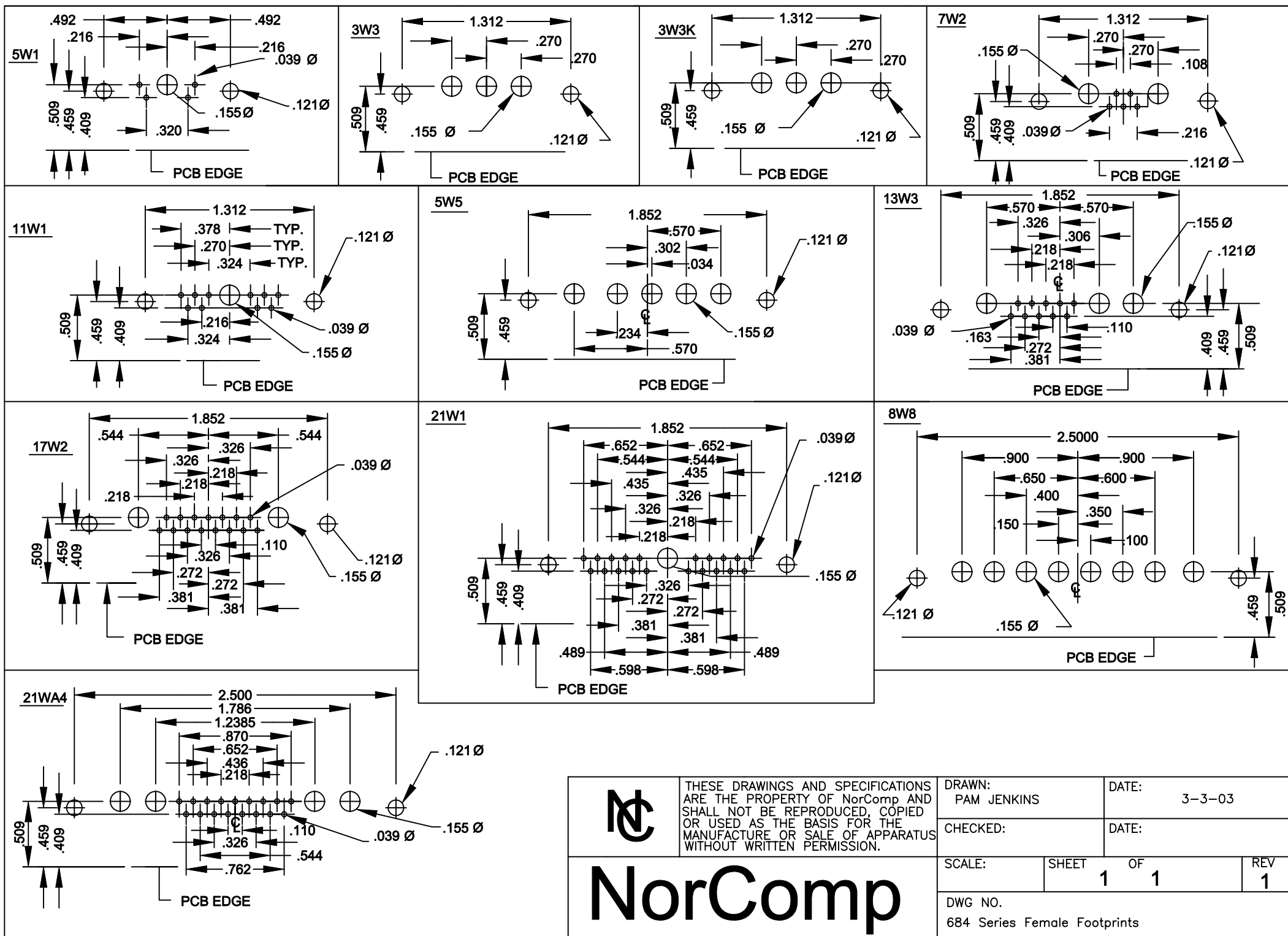
SHEET

1 OF 1

REV
1

DWG NO.

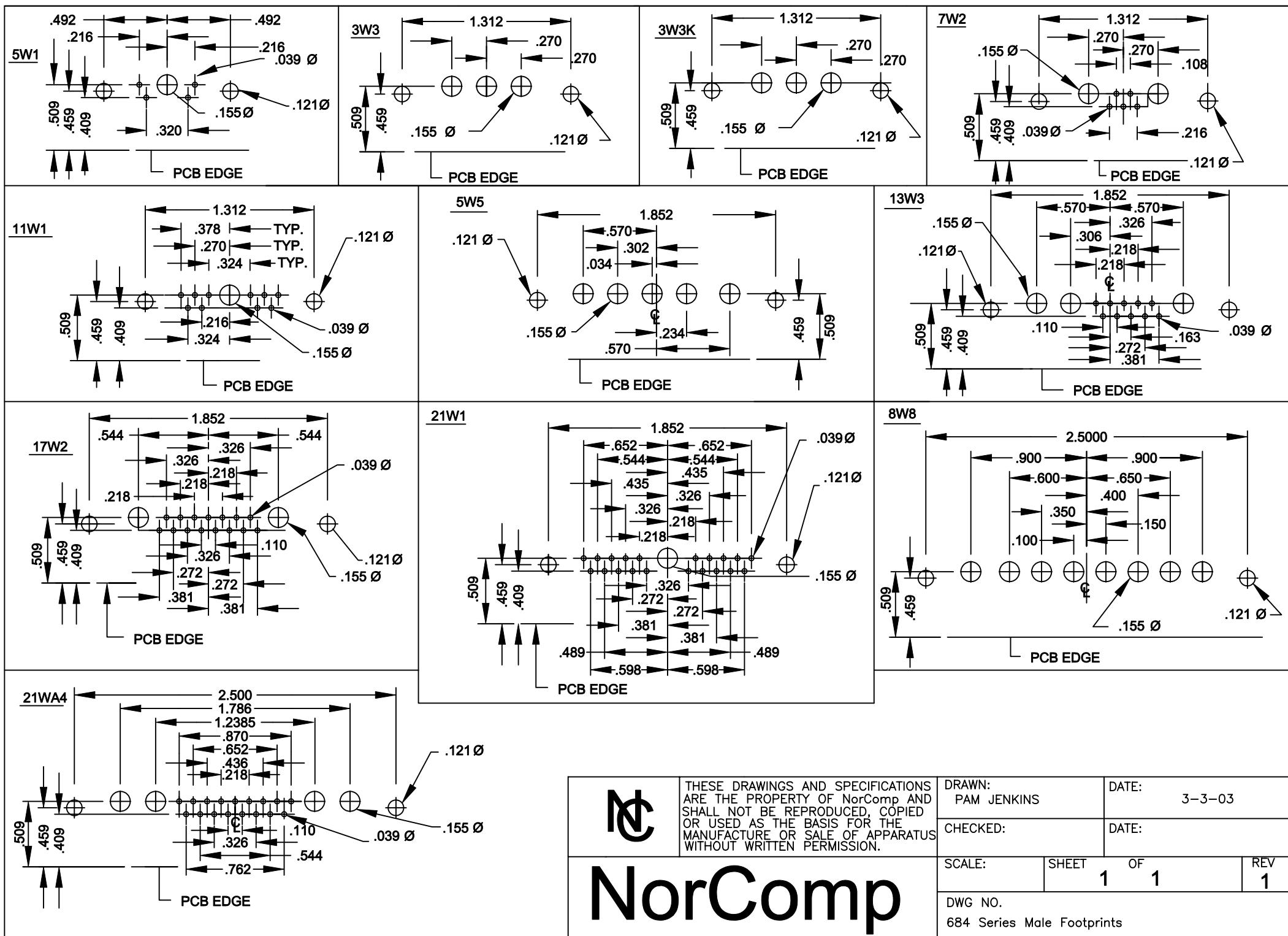
684 XXXX X 0 2 461



THESE DRAWINGS AND SPECIFICATIONS ARE THE PROPERTY OF NorComp AND SHALL NOT BE REPRODUCED, COPIED OR USED AS THE BASIS FOR THE MANUFACTURE OR SALE OF APPARATUS WITHOUT WRITTEN PERMISSION.

NorComp

DRAWN: PAM JENKINS		DATE: 3-3-03	
CHECKED:		DATE:	
SCALE:	SHEET 1	OF 1	REV 1
DWG NO. 684 Series Female Footprints			



THESE DRAWINGS AND SPECIFICATIONS ARE THE PROPERTY OF NorComp AND SHALL NOT BE REPRODUCED, COPIED OR USED AS THE BASIS FOR THE MANUFACTURE OR SALE OF APPARATUS WITHOUT WRITTEN PERMISSION.

NorComp

DRAWN: PAM JENKINS		DATE: 3-3-03	
CHECKED:		DATE:	
SCALE:	SHEET 1	OF 1	REV 1
DWG NO. 684 Series Male Footprints			