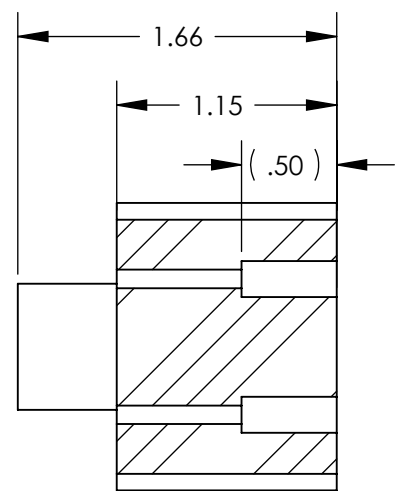
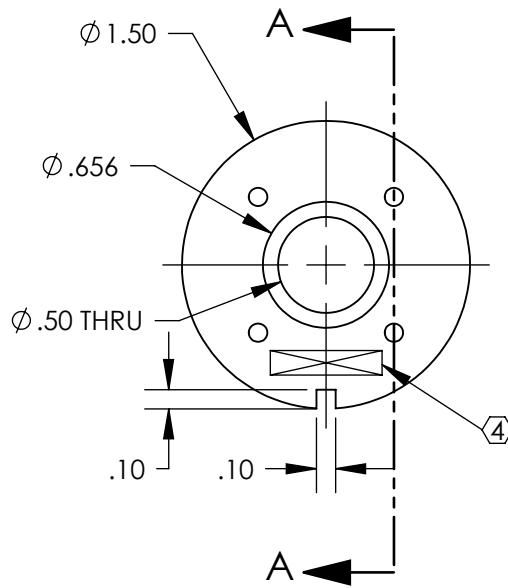
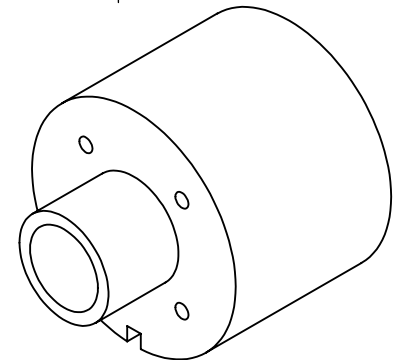
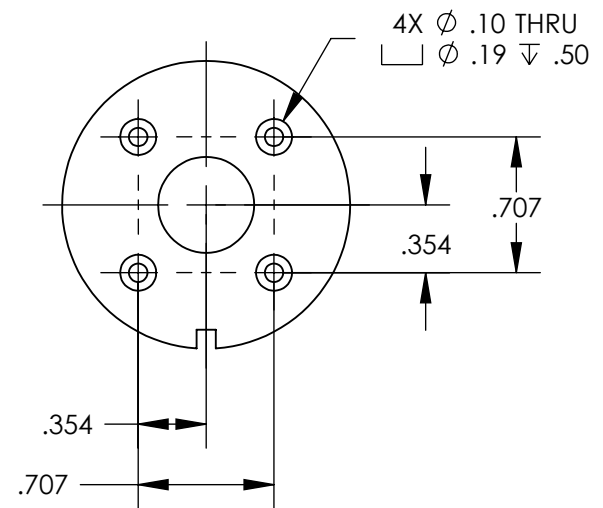


REV.	DATE	DCN #	DRAWING TREE #
A	4 AUG 2008	E080419-00-D	



SECTION A-A



NOTES: (UNLESS OTHERWISE SPECIFIED)			CALIFORNIA INSTITUTE OF TECHNOLOGY LIGO MASSACHUSETTS INSTITUTE OF TECHNOLOGY IGR, GLASGOW UNIVERSITY GEO 600 GROUP	
1. REMOVE ALL SHARP EDGES, R.02 MIN. 2. DO NOT SCALE FROM DRAWING. 3. ALL MACHINING FLUIDS SHALL BE WATER SOLUBLE AND FREE OF SULFUR, CHLORINE AND SILICONE, SUCH AS CINCINNATI MILACRON'S CIMTECH 410 (STAINLESS STEEL) ④ SCRIBE, ENGRAVE OR STAMP DRAWING PART NUMBER ON NOTED SURFACE OF PART AND THEN A THREE DIGIT SERIAL NUMBER. SERIAL NUMBERS START AT 001 FOR THE FIRST PART AND PROCEED CONSECUTIVELY. USE .07" HIGH CHARACTERS. EXAMPLE: D020188-001. A VIBRATORY TOOL MAY BE USED.	DIMENSIONS ARE IN INCHES		SYSTEM ADVANCED LIGO	
	TOLERANCES: .XX ± 0.01 .XXX ± 0.005		SUB-SYSTEM SUS	
	ANGULAR ± 0.5 °		NEXT ASSY D080059	
	MATERIAL TEFLON		PART NAME ECD COILFORMER	
FINISH 63 μ inch		DRAWN M. Meyer 23 JAN 2008		SIZE A
CHECKED D. BRIDGES 4 AUG 2008		DWG. NO. D080073		REV. A
APPROVED		SCALE: 1:1		PROJECTION:
		SHEET 1 OF 1		