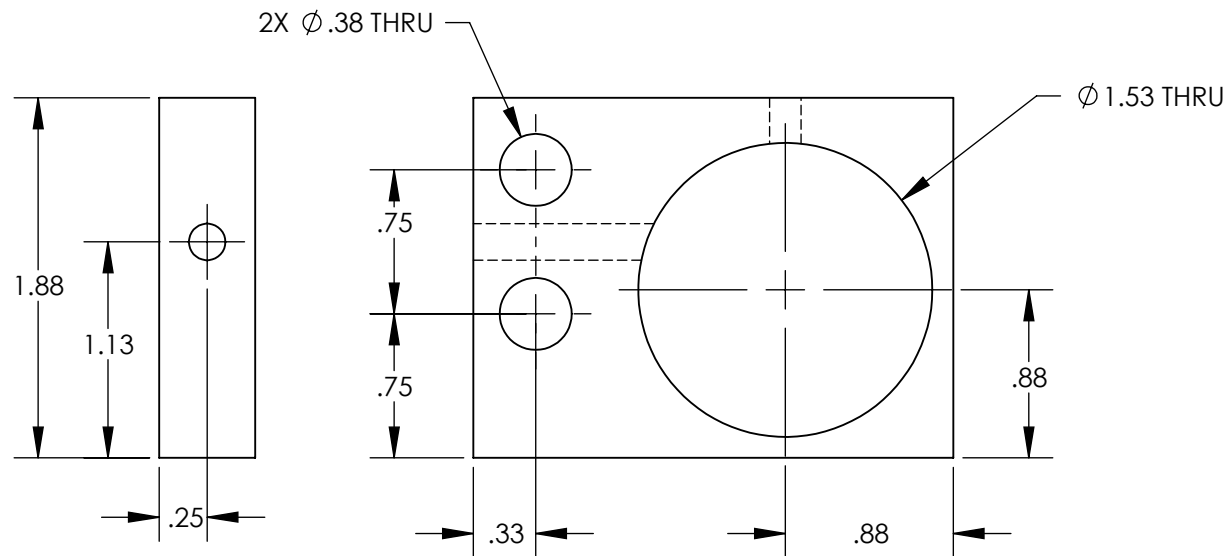
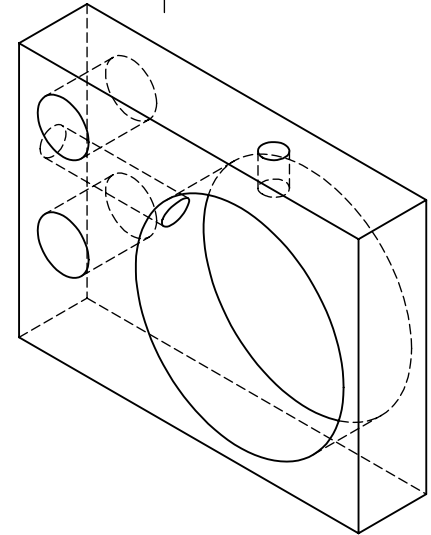
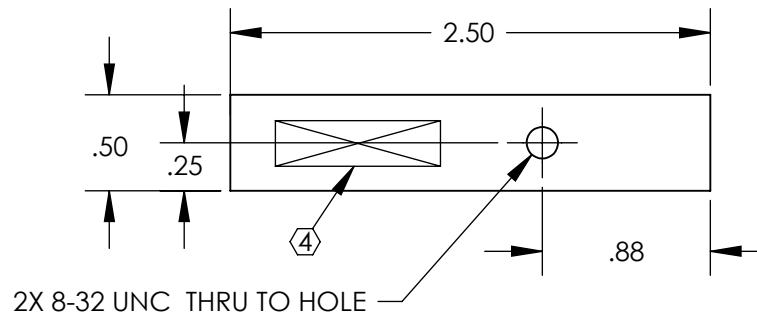


REV.	DATE	DCN #	DRAWING TREE #
A	4 AUG 2008	E080419-00-D	
B	6 AUG 2008	E080420-00-D	



**NOTES: (UNLESS OTHERWISE SPECIFIED)**

1. REMOVE ALL SHARP EDGES, R.02 MIN.
2. DO NOT SCALE FROM DRAWING.
3. ALL MACHINING FLUIDS SHALL BE WATER SOLUBLE AND FREE OF SULFUR, CHLORINE AND SILICONE, SUCH AS CINCINNATI MILACRON'S CIMTECH 410 (STAINLESS STEEL)
- ④ SCRIBE, ENGRAVE OR STAMP DRAWING PART NUMBER ON NOTED SURFACE OF PART AND THEN A THREE DIGIT SERIAL NUMBER. SERIAL NUMBERS START AT 001 FOR THE FIRST PART AND PROCEED CONSECUTIVELY. USE .07" HIGH CHARACTERS. EXAMPLE: D020188-001. A VIBRATORY TOOL MAY BE USED.

DIMENSIONS ARE IN INCHES

TOLERANCES:

.XX ± 0.01  
.XXX ± 0.005

ANGULAR ± 0.5 °

**MATERIAL**

6061-T6 AL

**FINISH**

63 µ inch

	NAME	DATE
<b>DRAWN</b>	M. MEYER	23 JAN 2008
<b>CHECKED</b>	D. BRIDGES	4 AUG 2008
<b>APPROVED</b>		

**SCALE** A

**PROJECTION**

**CALIFORNIA INSTITUTE OF TECHNOLOGY**  
**MASSACHUSETTS INSTITUTE OF TECHNOLOGY**  
**IGR, GLASGOW UNIVERSITY GEO 600 GROUP**

**SYSTEM** ADVANCED LIGO

**SUB-SYSTEM** SUS

**NEXT ASSY** D080057

**PART NAME** ECD MOUNT REAR

**SIZE** A  
**DWG. NO.** D080068

**REV.** B

**SCALE:** 1:1 **PROJECTION:** **SHEET 1 OF 1**