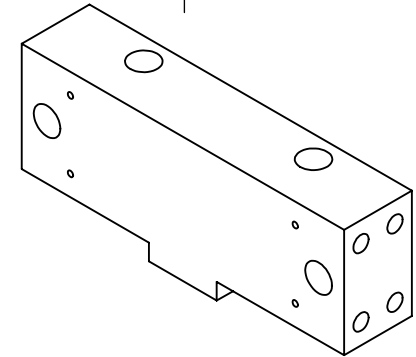
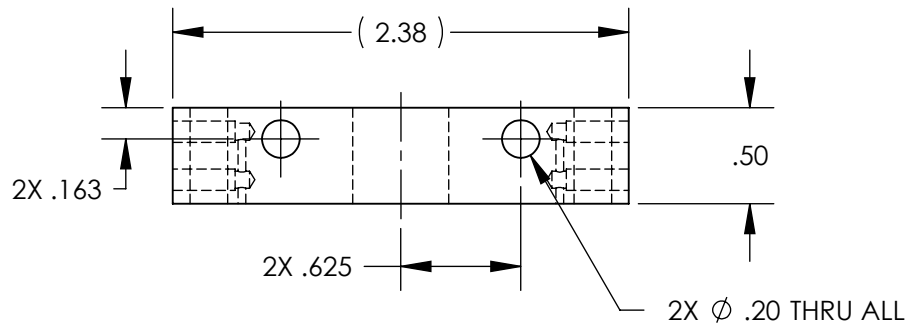
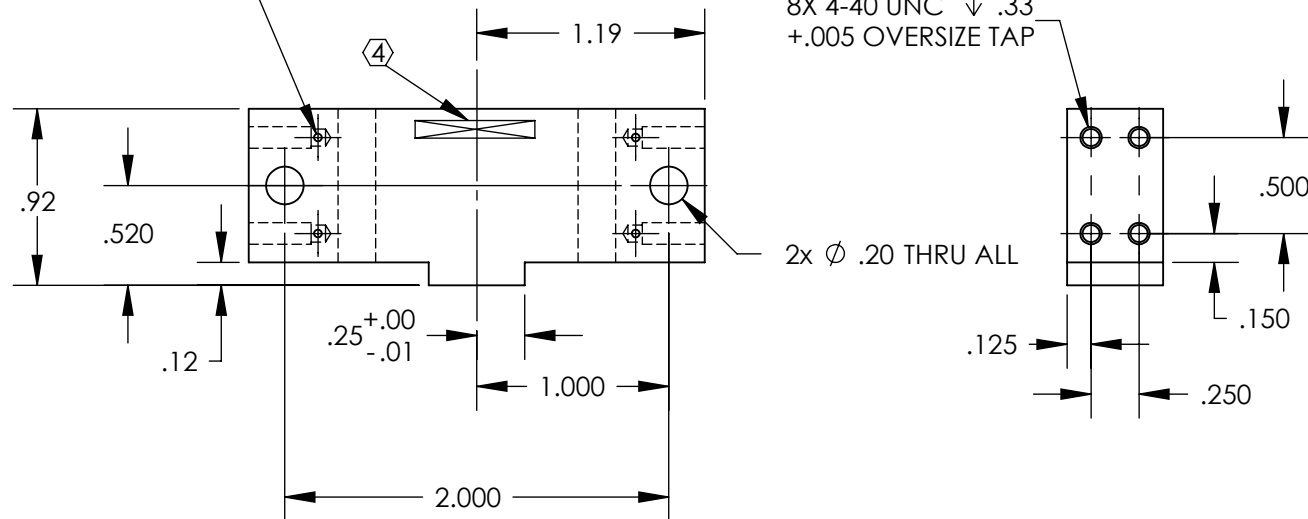


ADDITIONAL NOTES:
 5. 'L' AND 'IN' VARIANTS OF 304, 302, AND 316
 TYPE SSSL ARE ALSO ACCEPTABLE.
 6. 303 TYPE SSSL IS NOT ACCEPTABLE.

REV.	DATE	DCN #	DRAWING TREE #
A	4 AUG 2008	E080419-00-D	
B	6 AUG 2008	E080420-00-D	



4X ϕ .03/ ϕ .07 VENT HOLE
 THRU TO SECOND TAP DRILL



NOTES: (UNLESS OTHERWISE SPECIFIED)

- REMOVE ALL SHARP EDGES, R.02 MIN.
- DO NOT SCALE FROM DRAWING.
- ALL MACHINING FLUIDS SHALL BE WATER SOLUBLE AND FREE OF SULFUR, CHLORINE AND SILICONE, SUCH AS CINCINNATI MILACRON'S CIMTECH 410 (STAINLESS STEEL)
- SCRIBE, ENGRAVE OR STAMP DRAWING PART NUMBER ON NOTED SURFACE OF PART AND THEN A THREE DIGIT SERIAL NUMBER. SERIAL NUMBERS START AT 001 FOR THE FIRST PART AND PROCEED CONSECUTIVELY. USE .07" HIGH CHARACTERS. EXAMPLE: D020188-001. A VIBRATORY TOOL MAY BE USED.

DIMENSIONS ARE IN INCHES

TOLERANCES:
 .XX \pm 0.03
 .XXX \pm 0.005

ANGULAR \pm 0.5 °

MATERIAL
 304, 316, OR 302 SSSL

FINISH
 63 μ inch

	NAME	DATE
DRAWN	M. MEYER	07 JAN 2008
CHECKED	J. ROMIE	4 AUG 2008
APPROVED		

LIGO CALIFORNIA INSTITUTE OF TECHNOLOGY
 MASSACHUSETTS INSTITUTE OF TECHNOLOGY
 IGR, GLASGOW UNIVERSITY GEO 600 GROUP

SYSTEM ADVANCED LIGO

SUB-SYSTEM SUS

NEXT ASSY TT STRUCTURE ASSY

PART NAME SUSPENSION BAR

SIZE DWG. NO. D080064 REV. B

SCALE: 1:1 PROJECTION: SHEET 1 OF 1