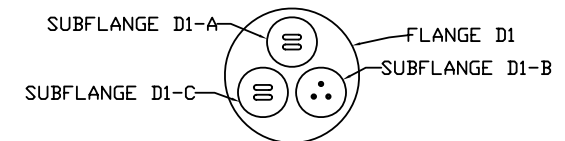


SIDE ELEVATION

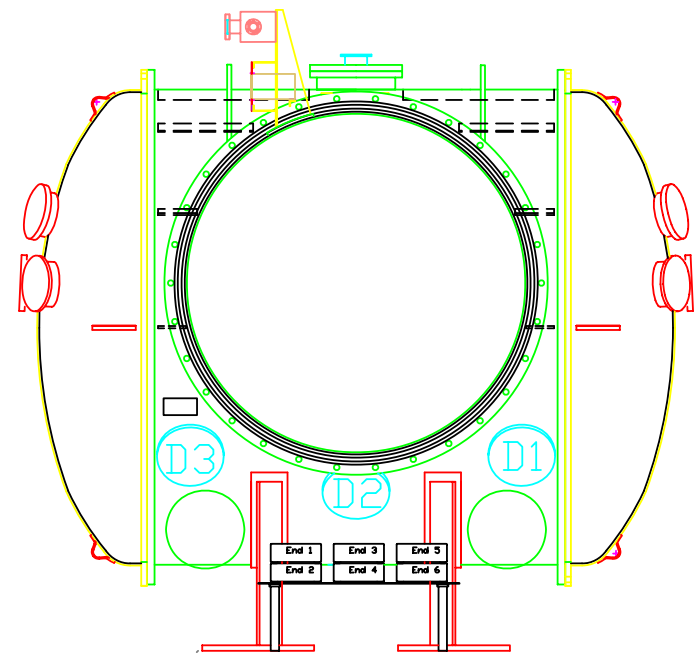
FLANGE	USAGE
D1-A	ISI 3-Pin Power D
D1-B	ISI 3-Pin Power D
D1-C	ISI 3-Pin Power D
D2-A	ISI BNC
D2-B	ISI BNC
D2-C	NOT USED
D3-A	ISI 25-Pin D-Sub
D3-B	ISI 25-Pin D-Sub
D3-C	NOT USED
D4-A	ISC 25-Pin D-Sub
D4-B	ISC 25-Pin D-Sub
D4-C	NOT USED
D5-A	SUS 25-Pin D-Sub
D5-B	SUS 25-Pin D-Sub
D5-C	NOT USED
D6-A	NOT USED
D6-B	NOT USED
D6-C	NOT USED

REVISIONS				
ZONE	REV	DESCRIPTION	DATE	APPROVED

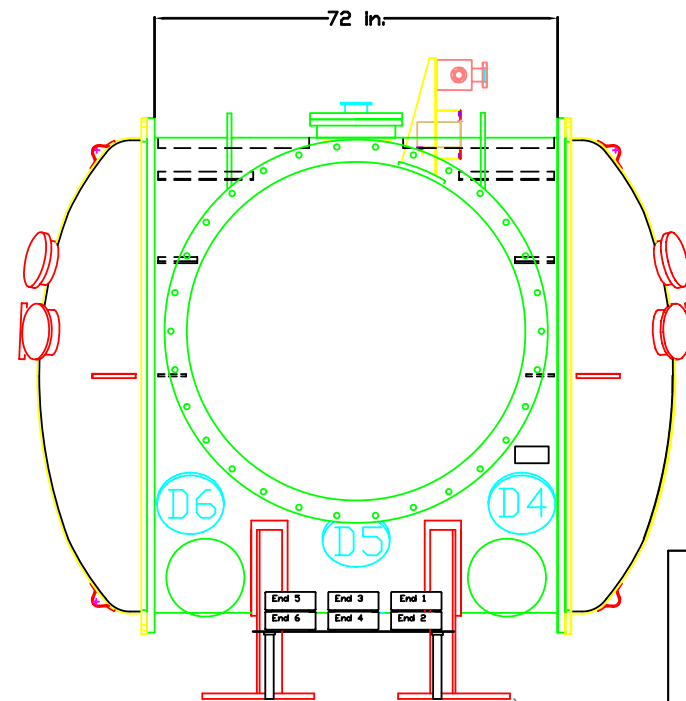
Example 12 inch Flange at Twice Scale  
Showing Subflange Orientation and Numbering



D1-A and D1-C are shown as either 3 pin or 25 pin D-Sub  
D1-B Shows an example of a BNC type feedthrough



AS THE BEAM FLIES



END OF HAM 6

HAM 6 Flanges				
R. Abbott				
SIZE	FSCM NO.	DWG NO.	REV	
		D070592	01	
SCALE			SHEET	