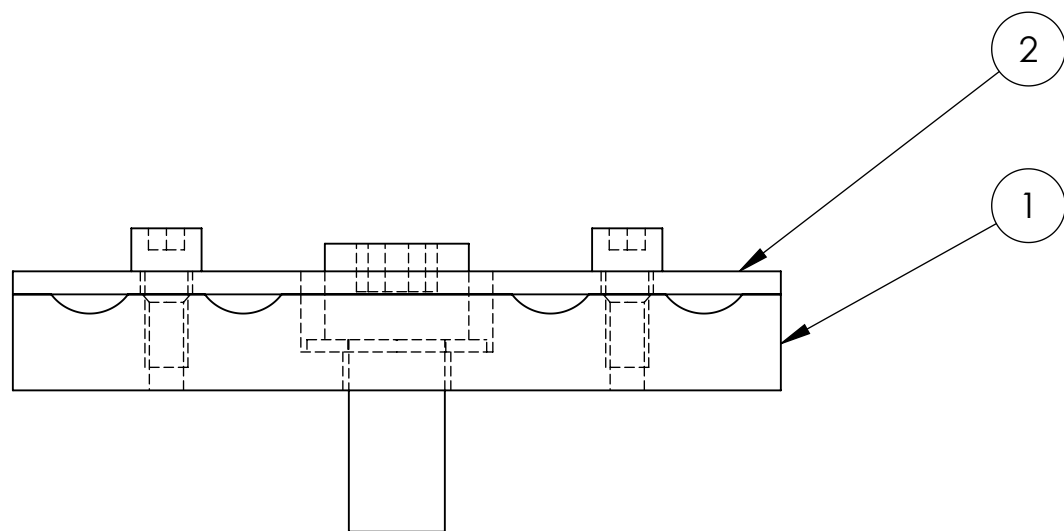
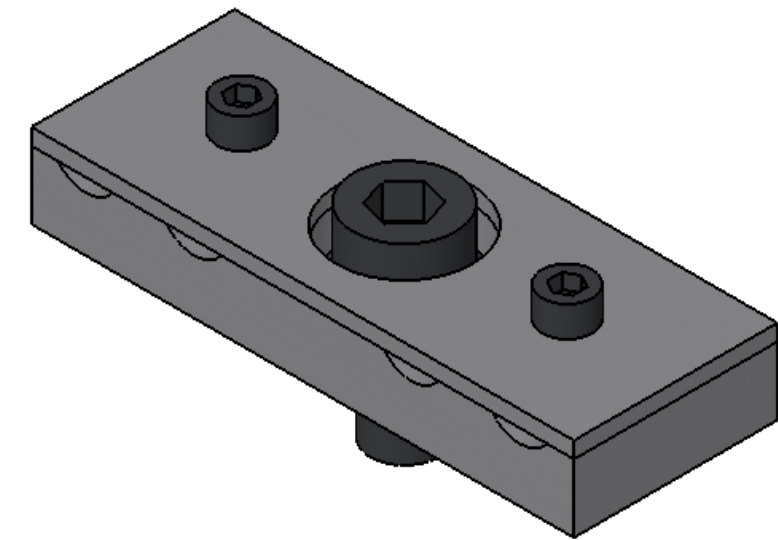
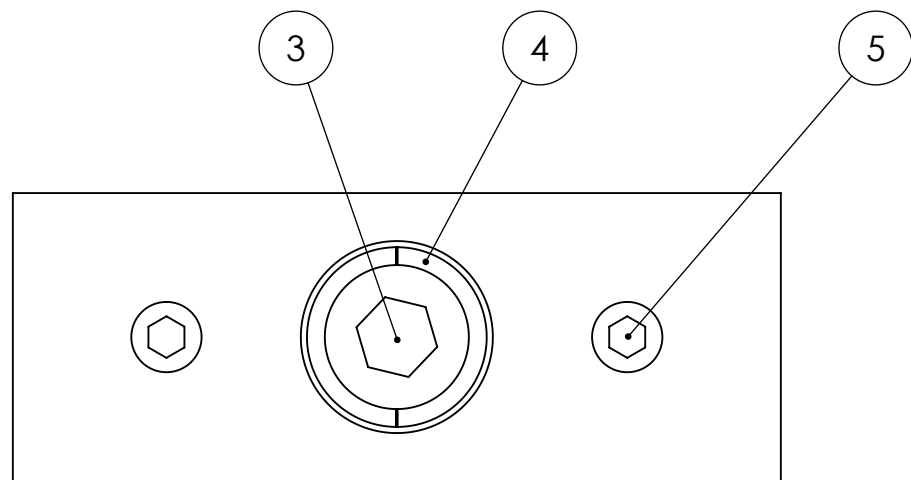


REV	DATE	APPROVAL	DESCRIPTION
A	11/07/2007	A. STEIN	INITIAL RELEASE



ITEM NO.	QTY.	PART NUMBER	DESCRIPTION
1	1	D070494	CABLE CLAMP BTM, HAM ISI
2	1	D070495	CABLE CLAMP TOP, HAM ISI
3	1	MCMASTER 92196A537	1/4-20x.50 SHCS
4	1	U-C COMPONENTS WFV-25	1/4" VENTED WASHER
5	2	MCMASTER 92196A106	#4-40x.25 SHCS

NOTES: (UNLESS OTHERWISE SPECIFIED)

- DO NOT SCALE FROM DRAWING.
- REMOVE ALL SHARP EDGES. LEAVE .005 X 45° MIN CHAMFER, OR .005 MIN RADIUS.
- MACHINE ALL SURFACES. NO SANDING OR TUMBLING ALLOWED.
- ALL MACHINING FLUIDS MUST BE WATER SOLUBLE AND FREE OF SULFUR, CHLORINE AND SILICONE. E.G., MILACRON CIMTECH 410.
- CLEAN THOROUGHLY TO REMOVE ALL OIL, DIRT, AND CHIPS.

DIMENSIONS ARE IN INCHES
 TOLERANCES:
 .XX ± 0.015
 .XXX ± 0.005
 SURFACE ROUGHNESS:
 63
 ANGULAR ± 0.5°

MATERIAL
 SEE BOM

FINISH
 SEE BOM

	NAME	DATE
DRAWN	A. STEIN	11/07/2007
CHECKED	-	-
APPROVED	-	-

LIGO CALIFORNIA INSTITUTE OF TECHNOLOGY
 MASSACHUSETTS INSTITUTE OF TECHNOLOGY
 IGR, GLASGOW UNIVERSITY GEO 600 GROUP

SYSTEM
 ADVANCED LIGO

SUB-SYSTEM
 SEI

NEXT ASSY
 HAM ISI

PART NAME
 CABLE CLAMP ASSY, HAM ISI

SIZE DWG. NO.
B D070496
 REV
A

SCALE: 2:1 PROJECTION: SHEET 1 OF 1