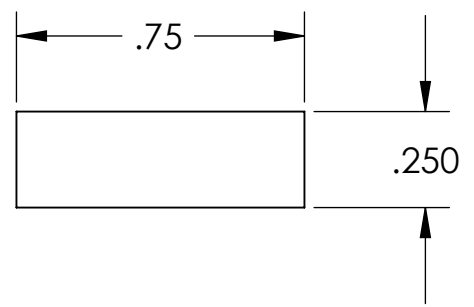
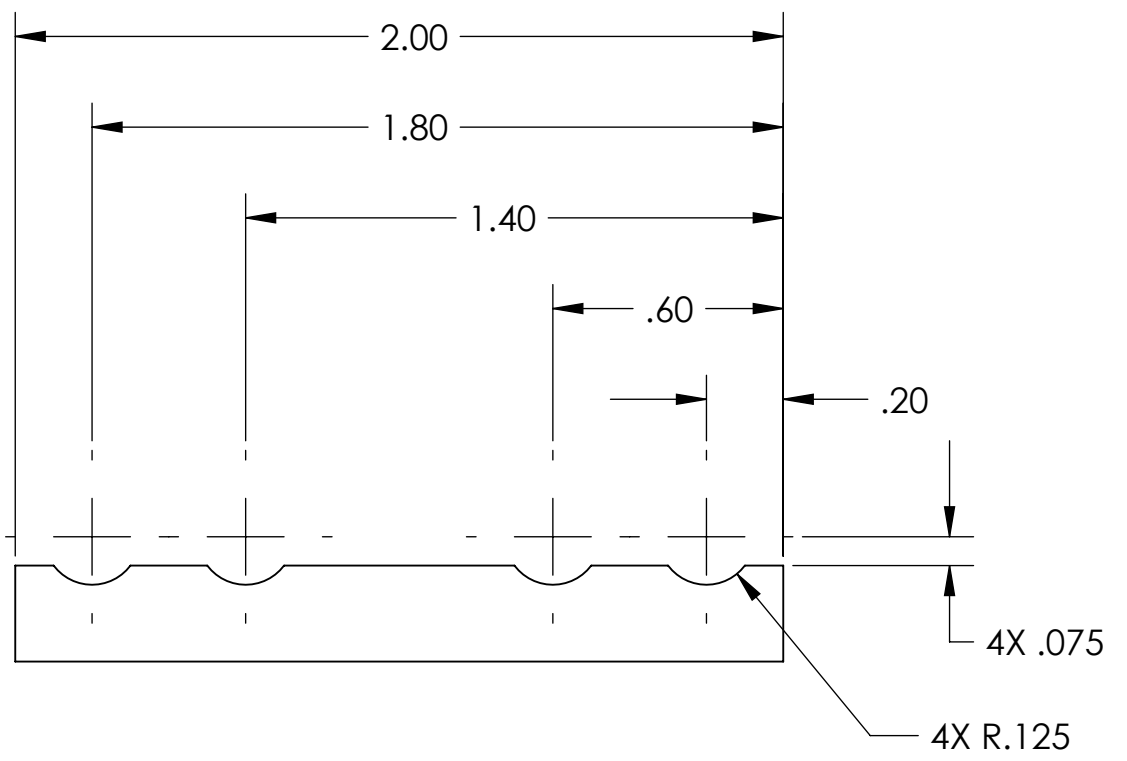
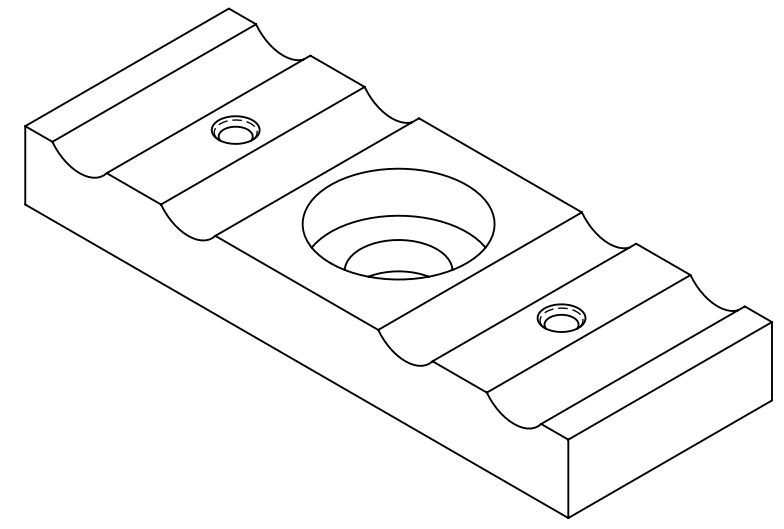
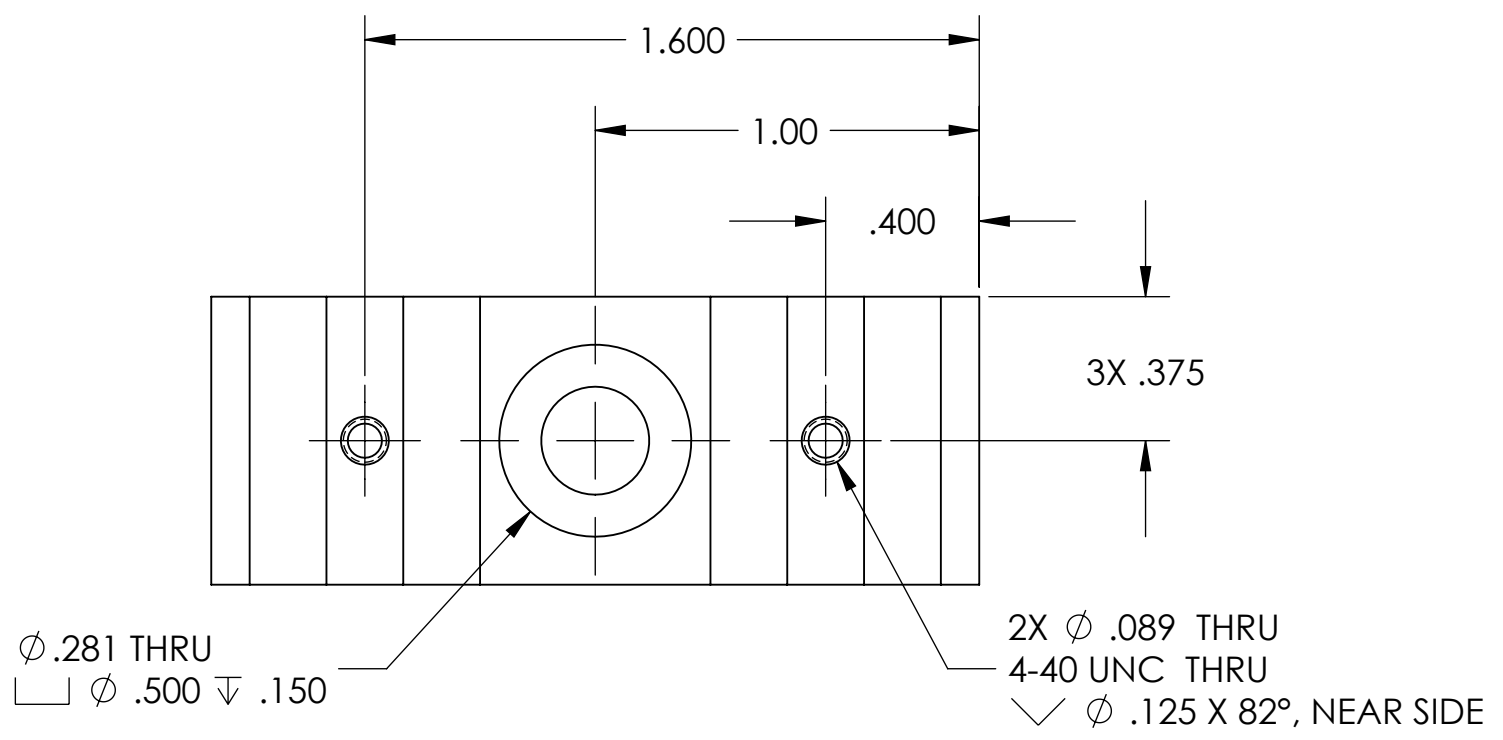


REV	DATE	APPROVAL	DESCRIPTION
A	11/07/2007	A. STEIN	INITIAL RELEASE



NOTES: (UNLESS OTHERWISE SPECIFIED)

- DO NOT SCALE FROM DRAWING.
- REMOVE ALL SHARP EDGES. LEAVE $.005 \times 45^\circ$ MIN CHAMFER, OR $.005$ MIN RADIUS.
- MACHINE ALL SURFACES. NO SANDING OR TUMBLING ALLOWED.
- ALL MACHINING FLUIDS MUST BE WATER SOLUBLE AND FREE OF SULFUR, CHLORINE AND SILICONE. E.G., MILACRON CIMTECH 410.
- CLEAN THOROUGHLY TO REMOVE ALL OIL, DIRT, AND CHIPS.

DIMENSIONS ARE IN INCHES

TOLERANCES:
 .XX ± 0.015
 .XXX ± 0.005

SURFACE ROUGHNESS:
 $\sqrt{63}$

ANGULAR $\pm 0.5^\circ$

MATERIAL
Al 6061-T6

FINISH
NONE

	NAME	DATE
DRAWN	A. STEIN	11/07/2007
CHECKED	-	-
APPROVED	-	-

SYSTEM ADVANCED LIGO
SUB-SYSTEM SEI
NEXT ASSY CABLE CLAMP ASSY
PART NAME CABLE CLAMP BTM, HAM ISI

SIZE DWG. NO. **B** D070494 REV **A**

SCALE: 2:1 PROJECTION: SHEET 1 OF 1