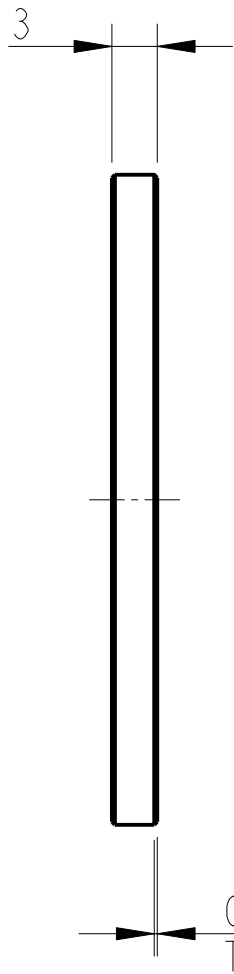
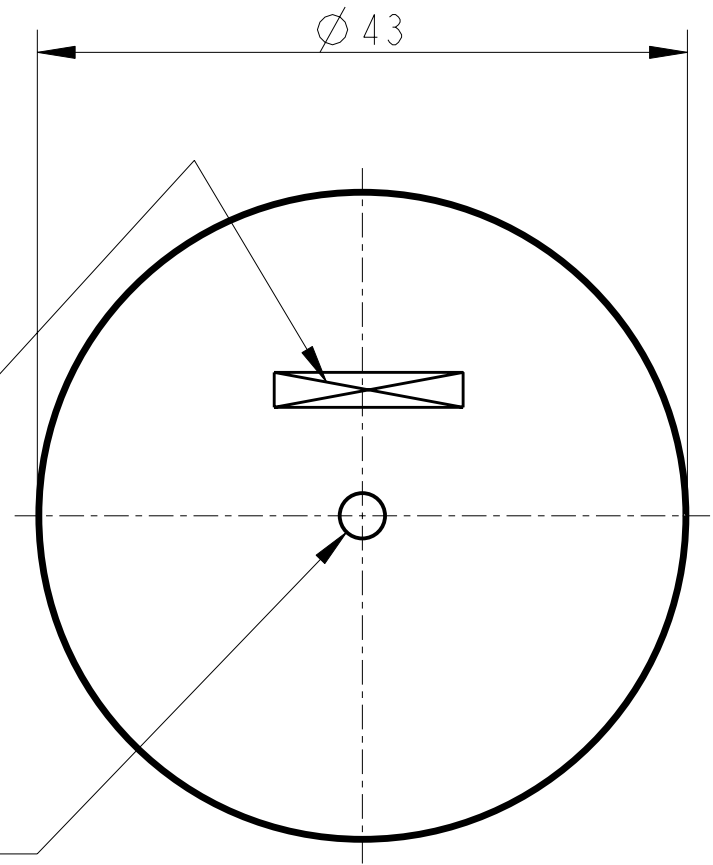


REV.	DATE	DCN #	DRAWING TREE #
A	30-OCT-06	E060260-00	



PART NO. (SEE NOTE 4)  
TO BE ETCHED OR STAMPED  
IN APPROX POSITION SHOWN.

1 - THRU' HOLE  
3.1  
Ø 3.0



NOTES: (UNLESS OTHERWISE SPECIFIED)

1. REMOVE ALL SHARP EDGES, R.02 MIN.
2. DO NOT SCALE FROM DRAWING.
3. ALL MACHINING FLUIDS SHALL BE WATER SOLUBLE AND FREE OF SULFUR, CHLORINE AND SILICONE, SUCH AS CINCINNATI MILACRON'S CIMTECH 410 (STAINLESS STEEL)
4. SCRIBE, ENGRAVE OR STAMP DRAWING PARTNUMBER ON NOTED SURFACE OF PART AND A THREE DIGIT SERIAL NUMBER. SERIAL NUMBERS START AT 001 FOR THE FIRST PART AND PROCEED CONSECUTIVELY. USE .07" HIGH CHARACTERS. EXAMPLE: D020188- 001. A VIBRATORY TOOL MAY BE USED.

DIMENSIONS ARE IN mm [INCHES]  
TOLERANCES:

X.XX ±0.2 mm  
ANGULAR ±0.25°


MATERIAL: ST. STEEL  
303/304/316

FINISH: CLEAN  
√μm [μin] Ra = 1.6

	NAME	DATE
DRAWN	NJS/FEL	02/AUG/06
CHECKED	J'OD	--/--/--
APPROVED	IW	--/--/--

 CALIFORNIA INSTITUTE OF TECHNOLOGY  
MASSACHUSETTS INSTITUTE OF TECHNOLOGY  
IGR, GLASGOW UNIVERSITY GEO 600 GROUP  
RUTHERFORD APPLETON LABORATORIES

SYSTEM	<b>ADVANCED LIGO</b>
SUB-SYSTEM	<b>SUS</b>
NEXT ASSY	<b>QUAD N-PTYPE LOWER STRUCTURE</b>
PART NAME	<b>DISC - LARGE UI MASS STOPS</b>

SIZE	DRG. NO.	REV
<b>A</b>	<b>D060467</b>	<b>A.</b>
SCALE 2:1	PROJECTION: 	SHEET 1 OF 1