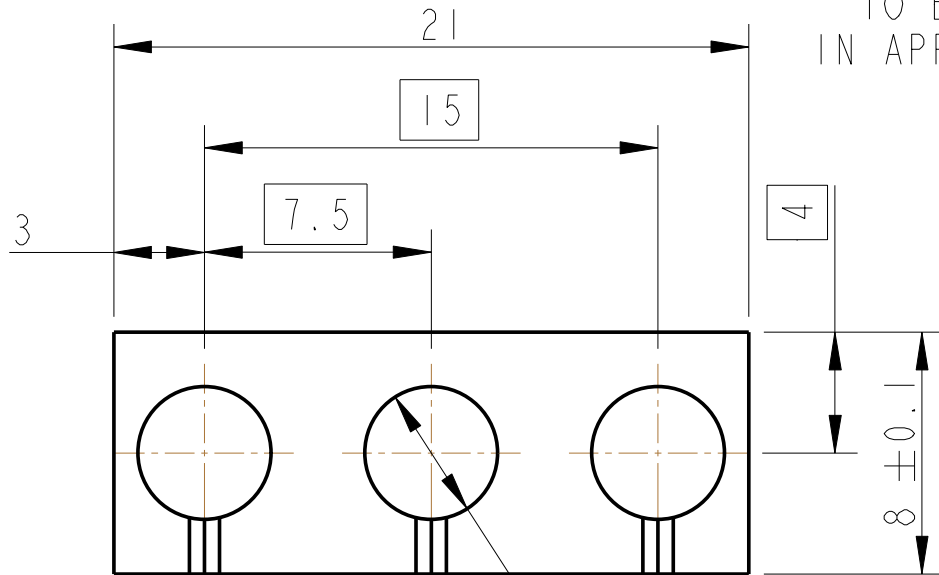


REV.	DATE	DCN #	DRAWING TREE #
A	15/OCT/06	E060240	.
B	20/DEC/07	E060240-B	.

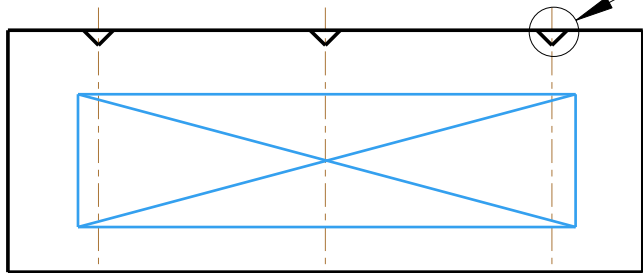
PART NO. (SEE NOTE 4)
TO BE ETCHED OR STAMPED
IN APPROX POSITION SHOWN.



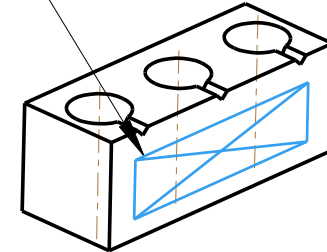
Ø 4.4 TYP

\oplus	Ø 0.2
----------	-------

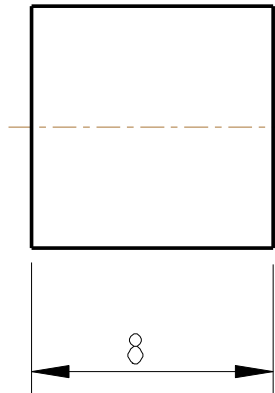
SEE DETAIL A



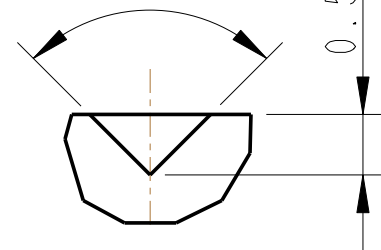
SCALE 4:1



3D VIEW
SCALE 2:1



90° ± 5°



DETAIL A
SCALE 16:1
3 PLACES

NOTES: (UNLESS OTHERWISE SPECIFIED)

- REMOVE ALL SHARP EDGES, R.02 MIN.
- DO NOT SCALE FROM DRAWING.
- ALL MACHINING FLUIDS SHALL BE WATER SOLUBLE AND FREE OF SULFUR, CHLORINE AND SILICONE, SUCH AS CINCINNATI MILACRON'S CIMTECH 410 (STAINLESS STEEL)
- SCRIBE, ENGRAVE OR STAMP DRAWING PARTNUMBER ON NOTED SURFACE OF PART AND A THREE DIGIT SERIAL NUMBER. SERIAL NUMBERS START AT 001 FOR THE FIRST PART AND PROCEED CONSECUTIVELY. USE .07" HIGH CHARACTERS. EXAMPLE: D020188- 001. A VIBRATORY TOOL MAY BE USED.

DIMENSIONS ARE IN mm [INCHES]
TOLERANCES:

X.XX ± 0.2 mm
ANGULAR ± 0.25 °

MATERIAL: ST. STEEL
304/316

FINISH: CLEAN, GREASE FREE
Ra = 1.6

	NAME	DATE
DRAWN	J O'DELL	12/JAN/06
CHECKED	AJB	12MAY08
APPROVED	IW	06/APR/06



SYSTEM **ADVANCED LIGO**

SUB-SYSTEM **SUS**

NEXT ASSY **PENRE ETM QUAD M-PTYPE**

PART NAME **UI - PENULTIMATE MASS CLAMP
PEN-RE MASS WIRE CLAMP**

SIZE A	DRG. NO. D060339	REV F.
---------------	-------------------------	---------------