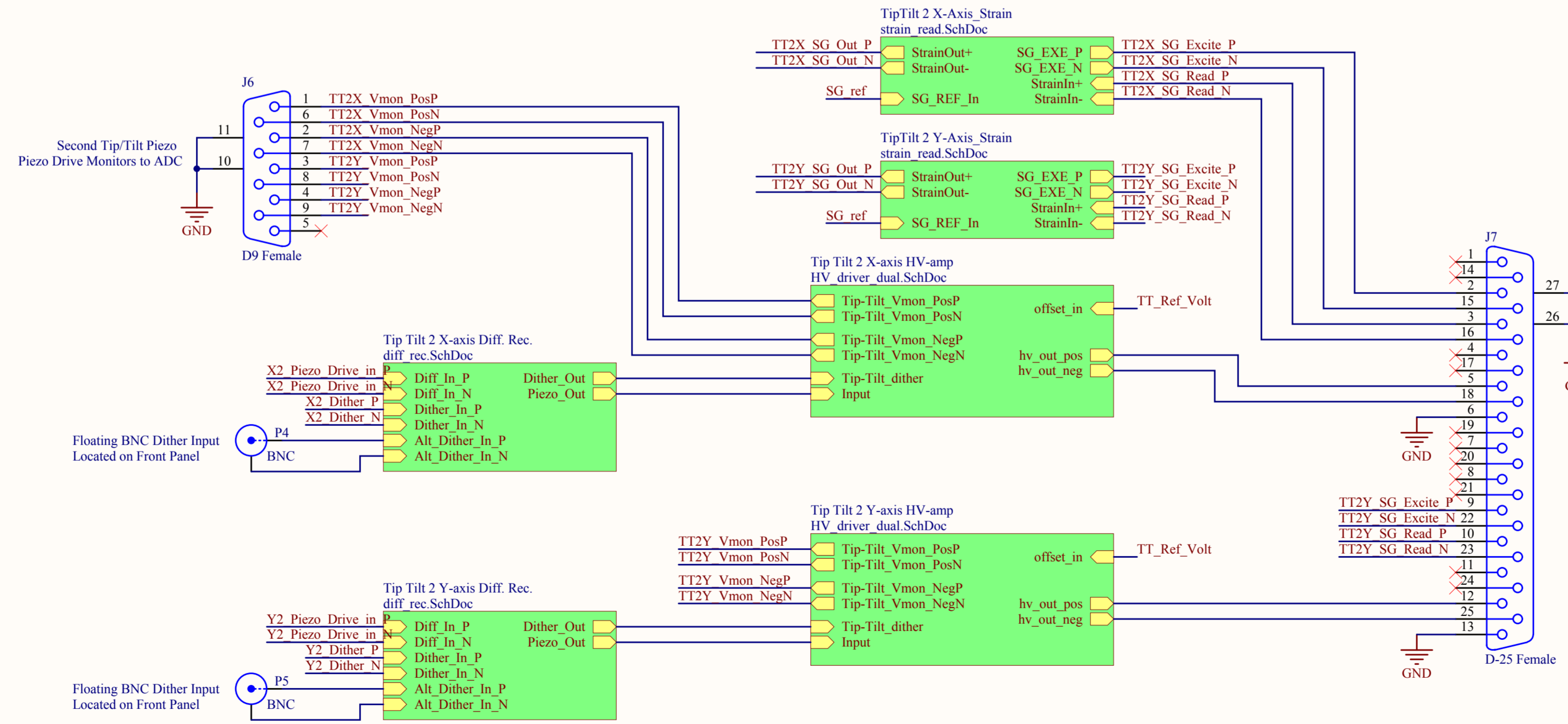
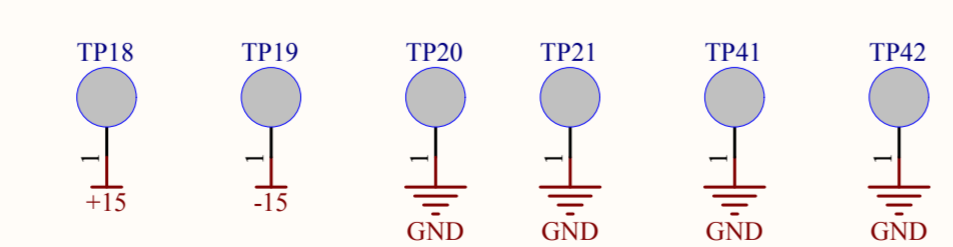
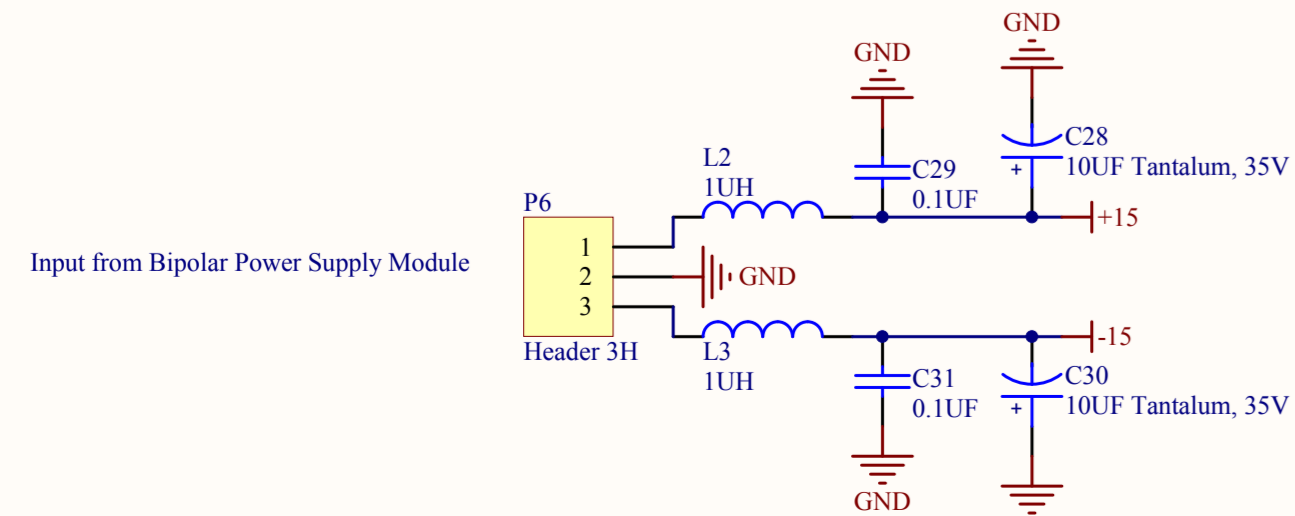
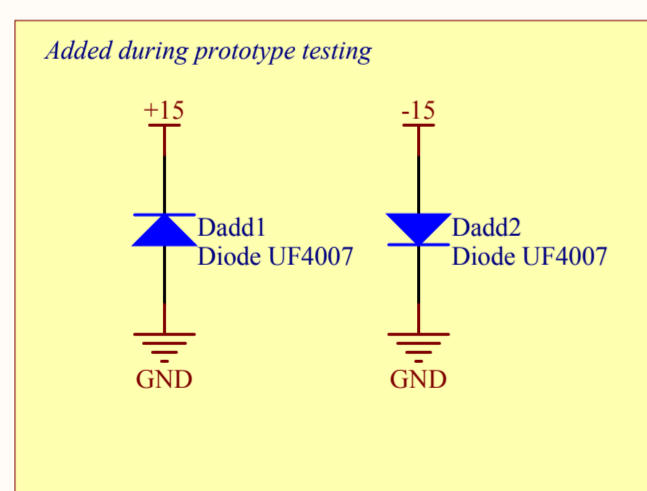


Stage 1 Tip/Tilt Piezo Interface



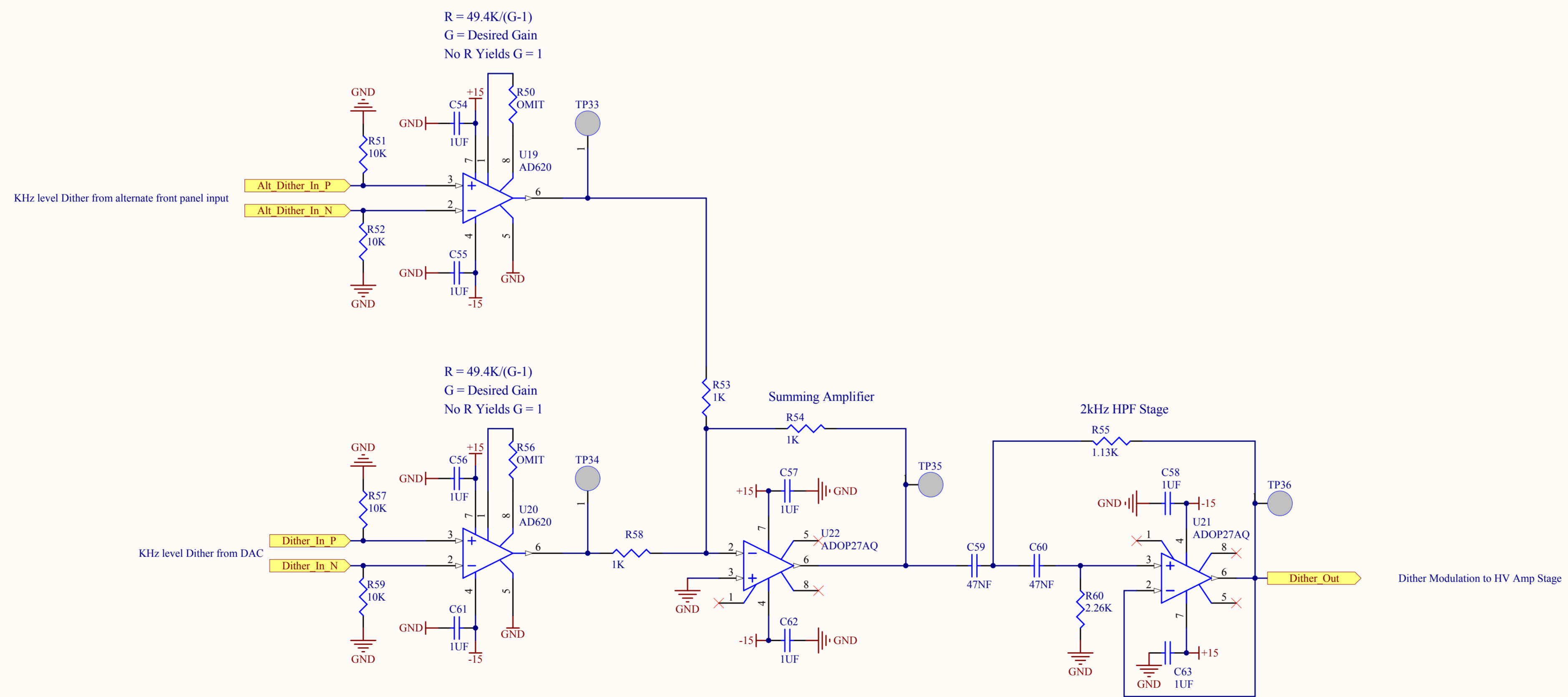
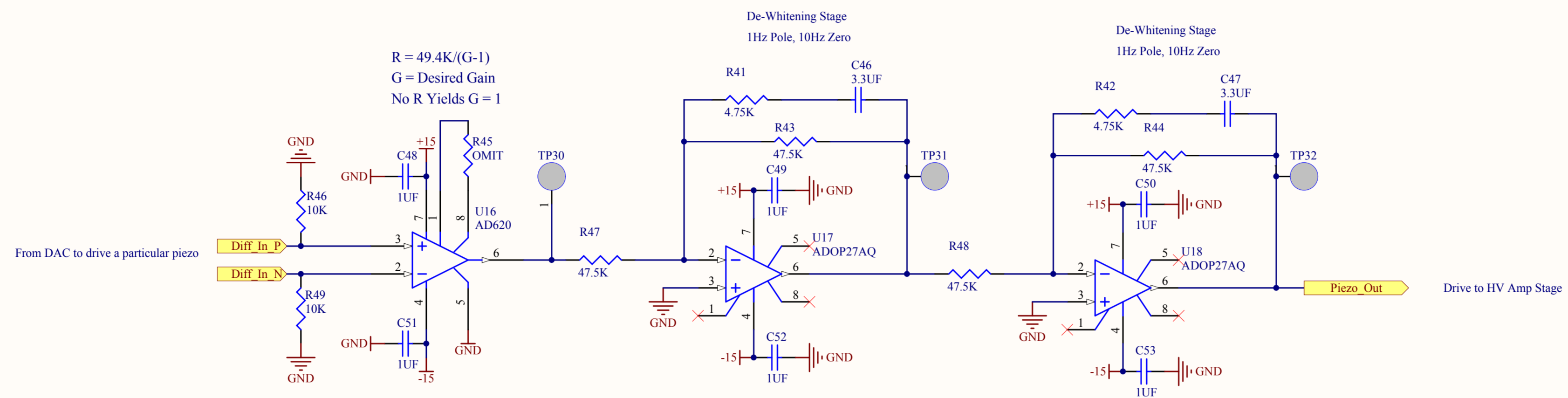
Stage 2 Tip/Tilt Piezo Interface



Revision History:
 Rev A was the original prototype.
 Rev A1 incorporates the following changes:
 R62 changed from 10K to 1K
 Changed series resistor on all DRV-135 inputs from 909 ohms to 1.05K
 Added reverse biased UF4007 diodes to ground on LV DC power supply inputs
 Added bipolar TVS chips to all dither amplifier outputs to protect from HV transients

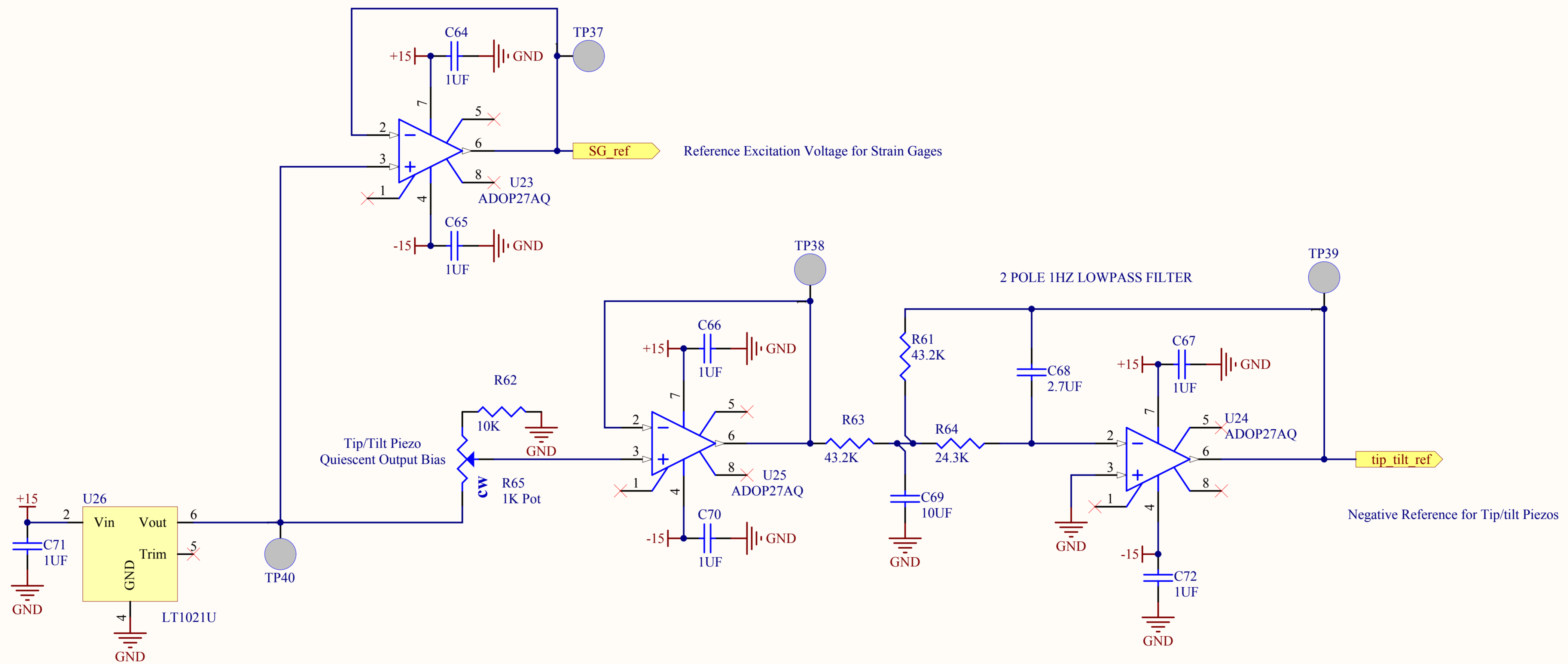
Title Tip/Tilt Piezo Driver Overview		LIGO Project California Institute of Technology Massachusetts Institute of Technology		LIGO	
Size: C	DCC Number: D060287	SCH / PCB Revision: A1	Engineer: R. Abbott	Date: 10/20/2006	Time: 12:08:52 PM
File: C:\Rich's Files\Mycodefiles\ISCDC_readout\PiezoDriver\drv_overview.SchDoe				Sheet 1 of 5	

Last Edited: 20 October 2006



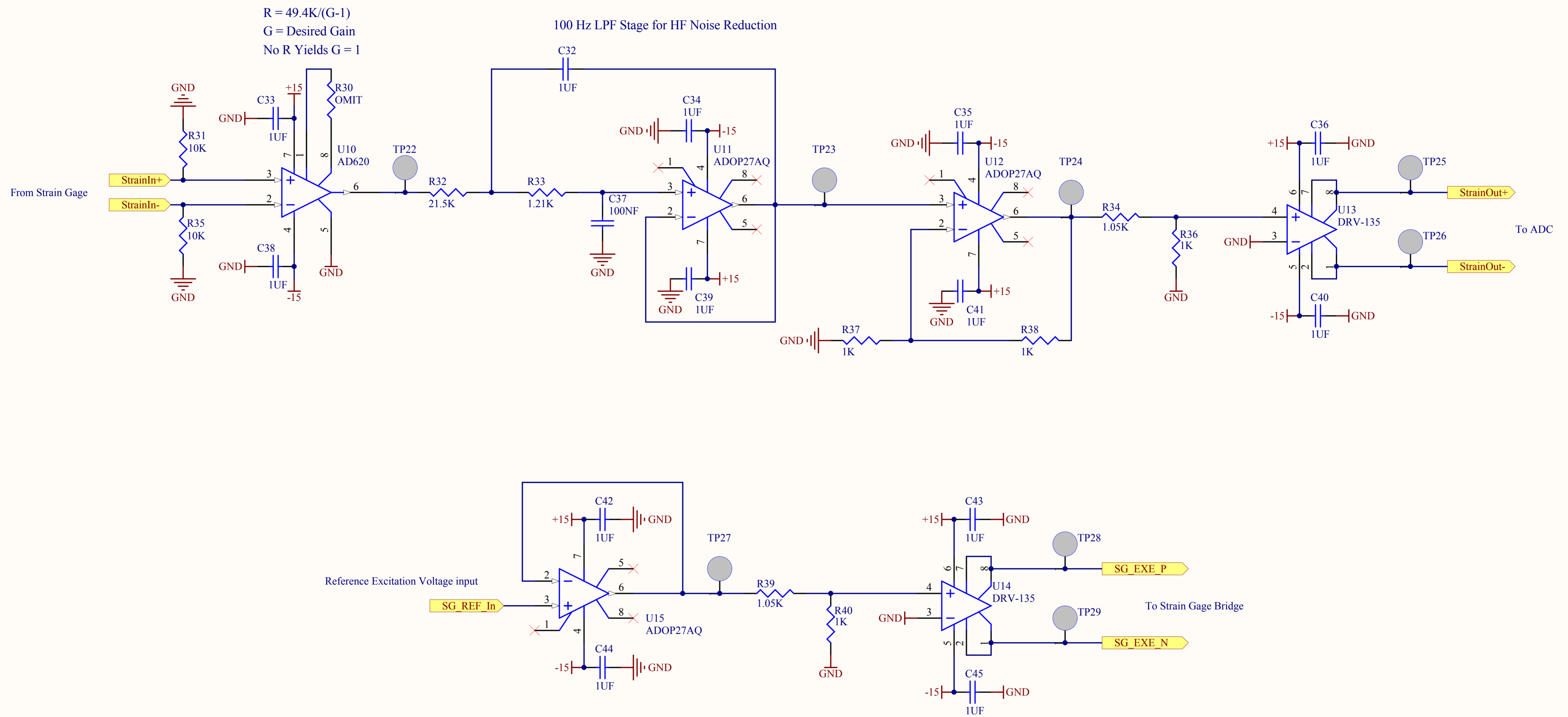
Last Edited: 20 October 2006

Title		LIGO Laboratory California Institute of Technology Massachusetts Institute of Technology		LIGO
Size: C		DCC Number: D060287	SCH / PCB Revision: A1	
File: C:\Rich's Files\Mycafiles\ISCDC_readout\PiezoDriver\diff_rec.SchDoc		Engineer: R. Abbott		Time: 12:08:52 PM
				Sheet 4 of 5



Last Edited: 20 October 2006

Title		LIGO Laboratory California Institute of Technology Massachusetts Institute of Technology		LIGO	
Size: B	DCC Number: D060287	Revision: A1	Engineer: R. Abbott	Date: 10/20/2006	Time: 12:08:52 PM
File: C:\Rich's Files\Mycafiles\ISC\DC_readout\PiezoDriver\ref_filter.SchDoc				Sheet 5 of 0	



Last Edited: 20 October 2006

Title		LIGO Project California Institute of Technology Massachusetts Institute of Technology		LIGO	
Size: B	DCC Number: D060287	Revision: A1	Engineer: R. Abbott	Date: 10/20/2006	Time: 12:08:52 PM
File: C:\Rich's Files\Mycafiles\ISC\DC_readout\PiezoDriver\strain_read.SchDoc				Sheet 3 of 5	

