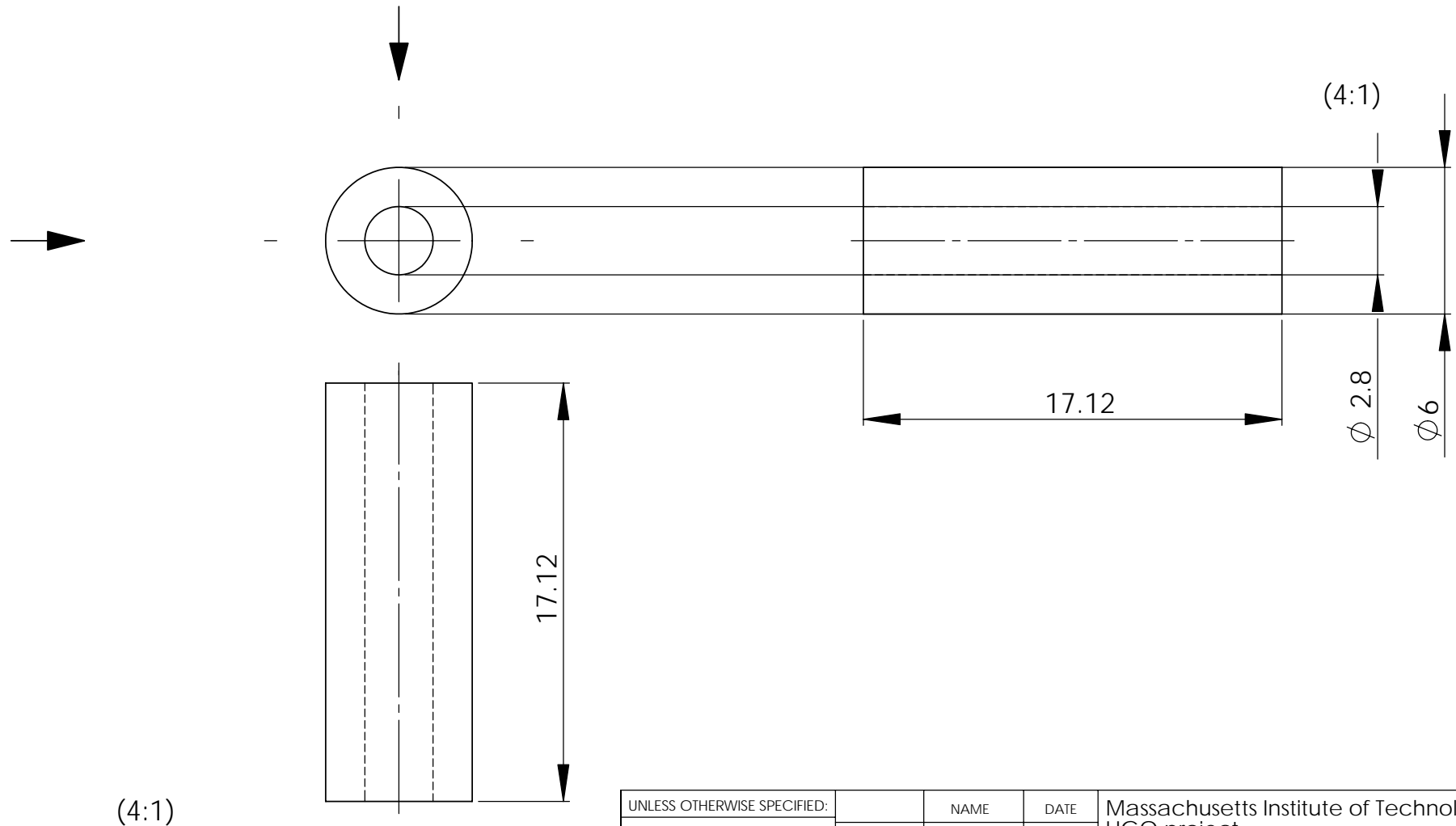


- NOTES: (UNLESS OTHERWISE SPECIFIED)
- BREAK ALL SHARP EDGES .2/.5 X 45°
 - ALL DIMENSIONS IN MILLIMETER



UNLESS OTHERWISE SPECIFIED:		NAME	DATE	Massachusetts Institute of Technology LIGO project										
DIMENSIONS ARE IN MILLIMETERS TOLERANCES ARE: ± 0.05mm ANGULAR: ± .25°	DRAWN	E.INNERHOFER	05/2006	TITLE: RPI, OSEM-Optics-Gluing-Pipe										
	CHECKED													
	ENG APPR.													
	MFG APPR.													
INTERPRET GEOMETRIC TOLERANCING PER:	Q.A.			<table border="1"> <tr> <td>SIZE</td> <td>DWG. NO.</td> <td>REV</td> </tr> <tr> <td>A</td> <td>LIGO-D060175-00-R</td> <td>00</td> </tr> <tr> <td colspan="2">SCALE: 4:1</td> <td>SHEET 1 OF 1</td> </tr> </table>		SIZE	DWG. NO.	REV	A	LIGO-D060175-00-R	00	SCALE: 4:1		SHEET 1 OF 1
SIZE	DWG. NO.	REV												
A	LIGO-D060175-00-R	00												
SCALE: 4:1		SHEET 1 OF 1												
MATERIAL Aluminum	COMMENTS:													
FINISH 64/														
DO NOT SCALE DRAWING														