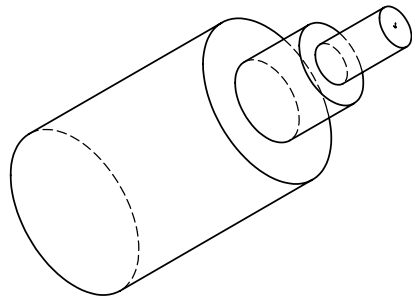
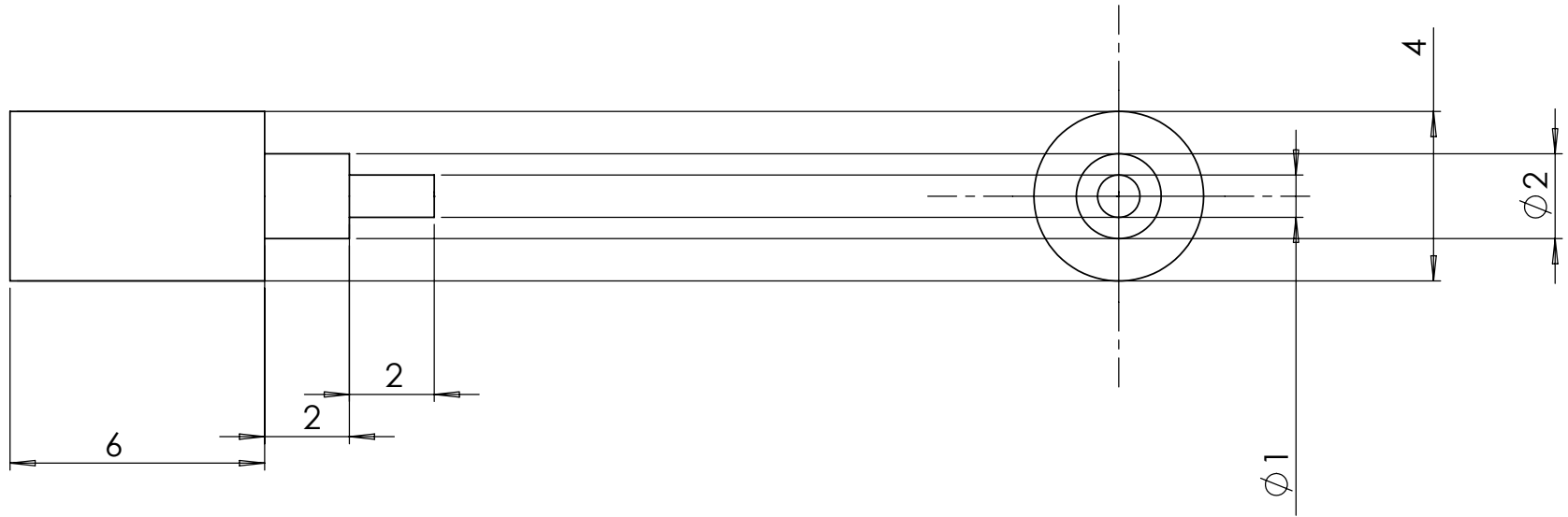


NOTES: (UNLESS OTHERWISE SPECIFIED)

1. BREAK ALL SHARP EDGES .01/.02 X 45°
2. ALL DIMENSIONS IN MILLIMETER



UNLESS OTHERWISE SPECIFIED:		NAME	DATE	Massachusetts Institute of Technology LIGO project	
DIMENSIONS ARE IN MILLIMETERS TOLERANCES ARE: ± 0.05mm ANGULAR: ± .25°	DRAWN	E. INNERHOFER	02/2006	TITLE:	
	CHECKED			RPI, Magnet-Applicator, 1g mirror	
	ENG APPR.			SIZE	DWG. NO.
	MFG APPR.			<b>A</b>	LIGO-D060062-00-R
INTERPRET GEOMETRIC TOLERANCING PER:	Q.A.			REV	
MATERIAL Aluminum	COMMENTS:			SCALE: 6:1	SHEET 1 OF 1
FINISH 32/√					
DO NOT SCALE DRAWING					