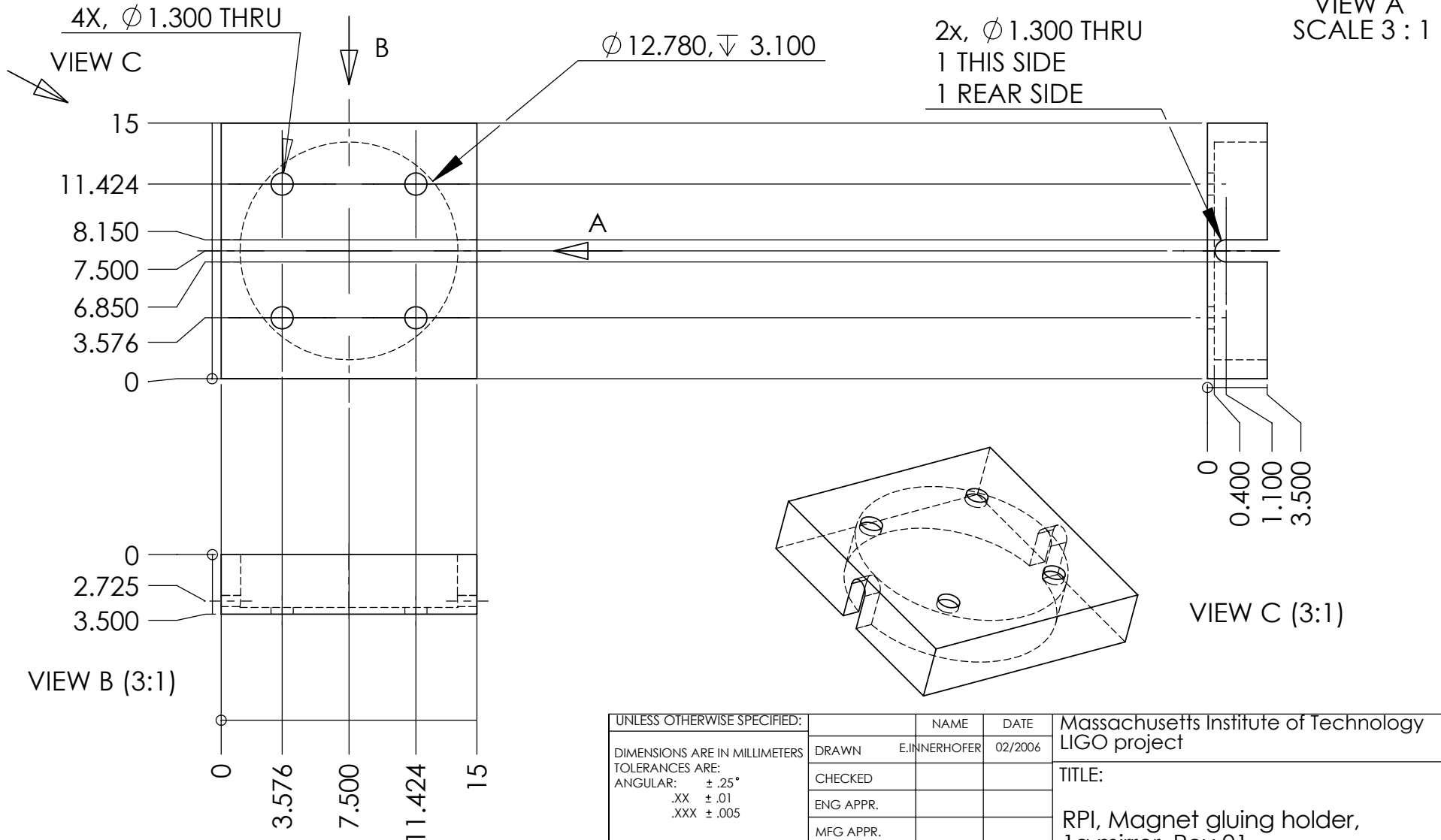


NOTES: (UNLESS OTHERWISE SPECIFIED)

- BREAK ALL SHARP EDGES .01/.02 X 45°
- ALL DIMENSIONS IN MILLIMETER



UNLESS OTHERWISE SPECIFIED:		NAME	DATE	Massachusetts Institute of Technology LIGO project	
DIMENSIONS ARE IN MILLIMETERS		DRAWN	E.INNERHOFER	02/2006	TITLE:  RPI, Magnet gluing holder, 1g mirror, Rev 01
TOLERANCES ARE:		CHECKED			
ANGULAR: $\pm .25^\circ$		ENG APPR.			
.XX $\pm .01$		MFG APPR.			
.XXX $\pm .005$		Q.A.			SIZE DWG. NO. REV <b>A</b> LIGO D060059-01-R 01
INTERPRET GEOMETRIC TOLERANCING PER:		COMMENTS:		SCALE: 3:1	
MATERIAL Aluminum				SHEET 1 OF 1	
FINISH $\sqrt{32}$					
DO NOT SCALE DRAWING					