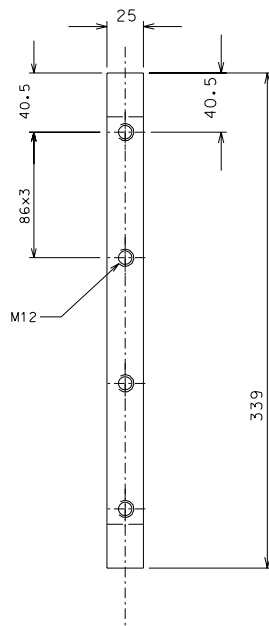
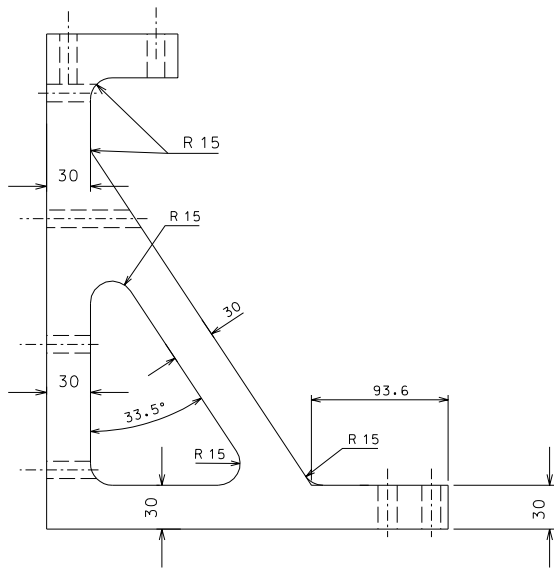
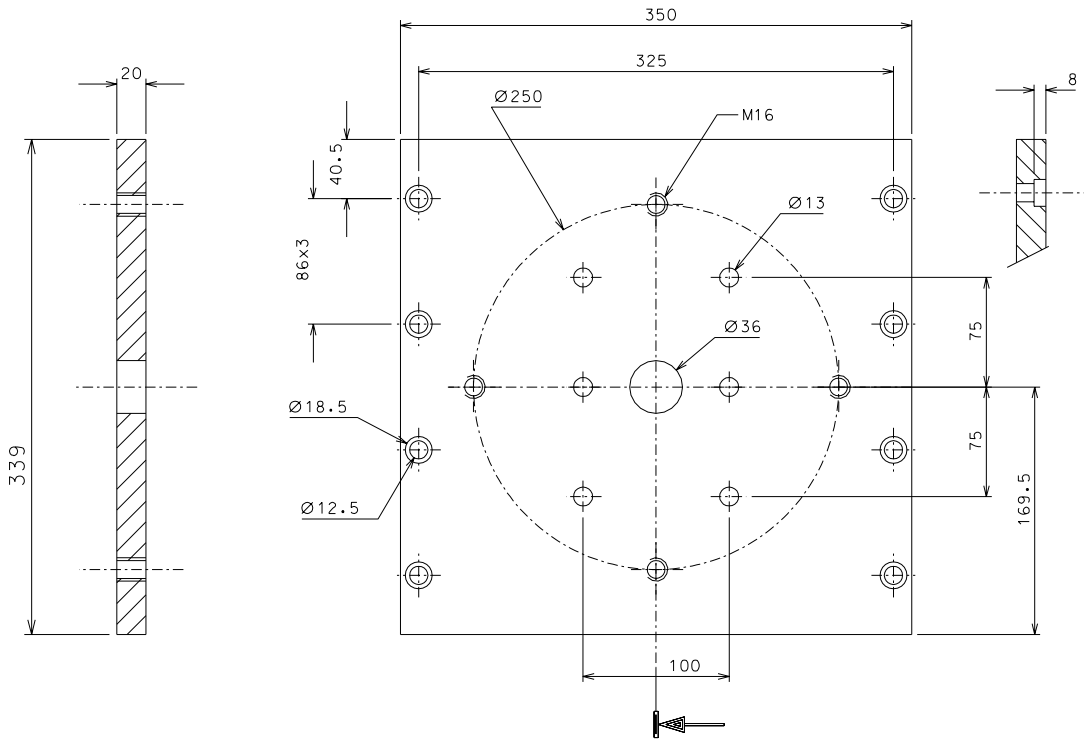
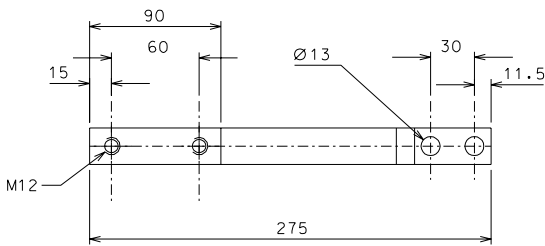


199.3



199.4



ref.	note	date	signature
modifications			
199.3	2	EN 6082	1/2.5
199.4	2	EN 6082	1/2.5
ref.	pieces	mat. and treatments	scale

General machining tolerances UNI 5307-63								
Dimensions	< 6	= 6-30	> 30-120	> 120-315	> 315-1000	> 1000-2000	> 2000-4000	> 4000
Linear Toli.	± 0.1	± 0.2	± 0.3	± 0.5	± 0.8	± 1.2	± 2	± 3
angular Toli.	± 1'	± 30'	± 20'	referred to the shortest side				
designed for				R.De Salvo				
draw. by				G. Gennaro-PROMECA				
date				02-08-06				
scale				1/2.5				
title				HAM-OPTICAL BENCH				
AD-LIGO-MOUNTING SUPPORTS				LIGO-D051241-00-D				
detail from				191				
				A 2				