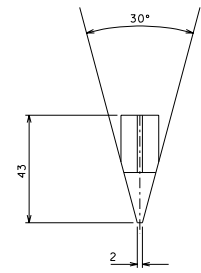
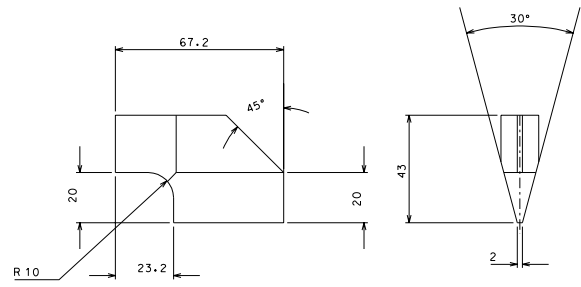
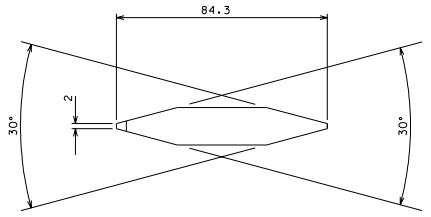


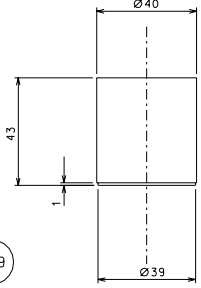
1.7

1.8



1.6

1.9



ref.	desc.	none	one	signature
modifications				
1.9	18	EN 5083 H32	1/1	
1.8	4	EN 5083 H32	1/1	
1.7	14	EN 5083 H32	1/1	
1.6	18	EN 5083 H32	1/1	
ref.	drawn	date	scale	signature

General machining tolerances UNI 5017-85					
dimension	< 4	4-30	30-100	> 100-300	> 300-1000
linear tol.	± 0.1	± 0.2	± 0.3	± 0.4	± 0.5
angular tol.	± 1'	± 30'	± 20'	related to the shortest side	

designed by		R. De Salvo	
drawn by		G. Gemmaro-PROMECA	
date	scale	date	scale
01-06-06	1/1		

title		LIGO PROJECT	
part		HAM-OPTICAL BENCH	
detail		DETAILS BASE	
114	114	LIGO-D051219-00-D	A 1