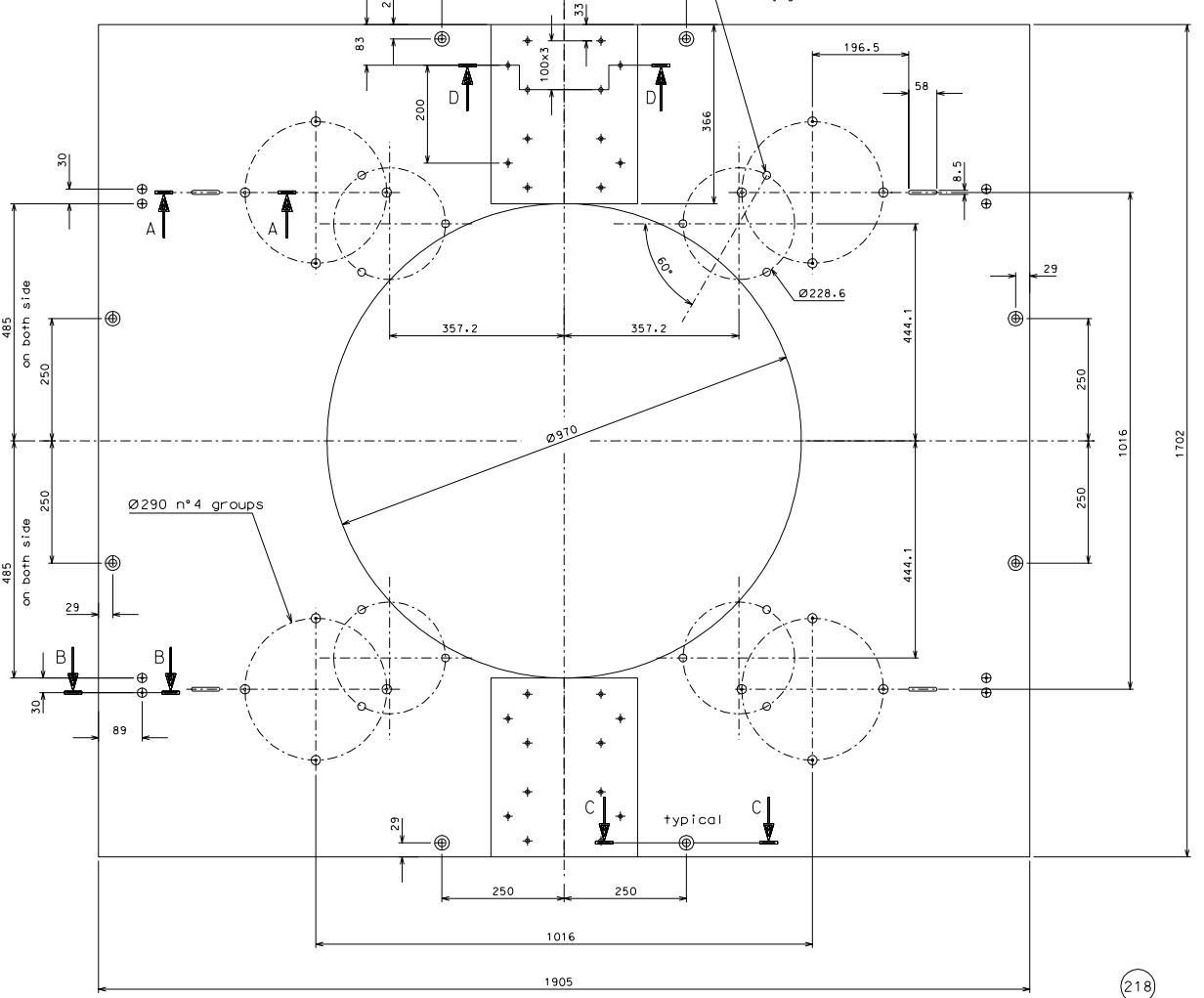
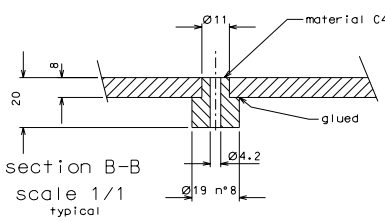


section A-A  
scale 1/1  
typical

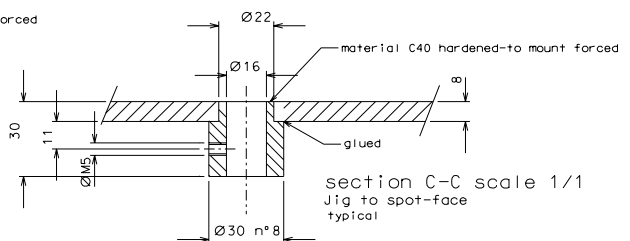
section D-D  
scale 1/2.5  
typical



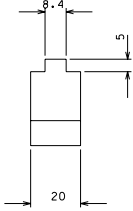
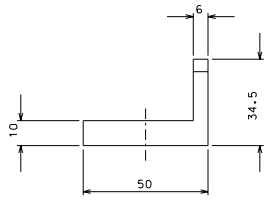
218



section B-B  
scale 1/1  
typical



section C-C scale 1/1  
Jig to spot-face  
typical



218.1

Jig to drill for holes M8

219

separate in two parts		04-05-06
added n° parts of sect. B-B		28-04-06
ref.	date	signature
modifications		
219	4	EN 6082 1/1
218.1	8	C40 hardened 1/5
218	1	EN 6082 1/5
ref.	date	signature
ref.	date	signature

General machining tolerances UNI 5307-83			
Dimension	< 6	6-30	> 30-120
Linear tol.	± 0.1	± 0.2	± 0.3
Angular tol.	± 1'	± 30'	± 20'
designed by R.De Salvo			
checked by G.Gennaro-PROMEC			
date 9-02-06 scale 1/5			
LIGO PROJECT			sheet
HAM-OPTICAL BENCH			LIGO-D051209-02-D
JIG TO DRILL OLD TABLE			A 1