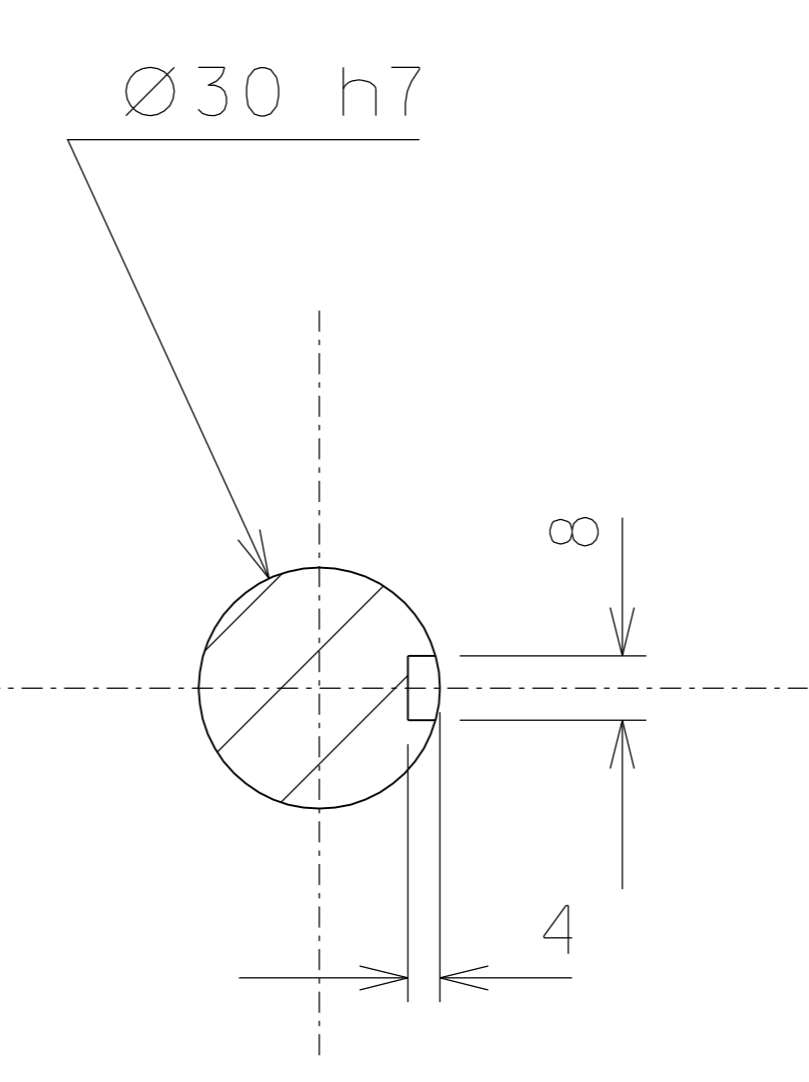
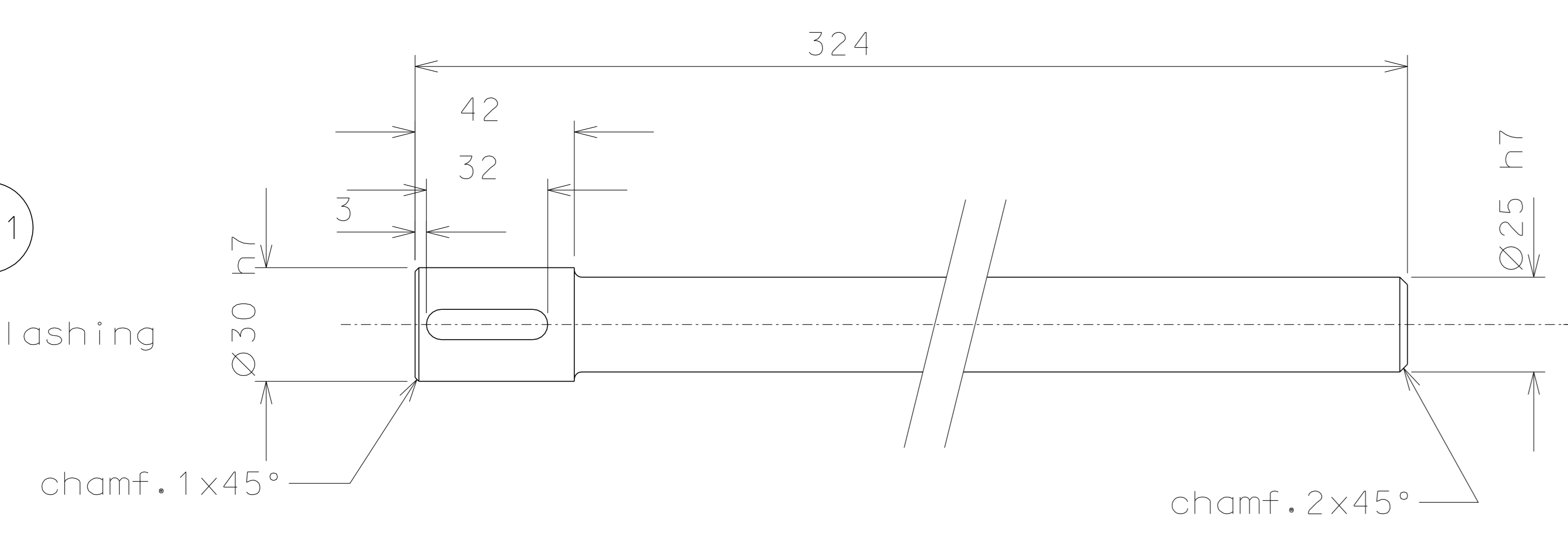
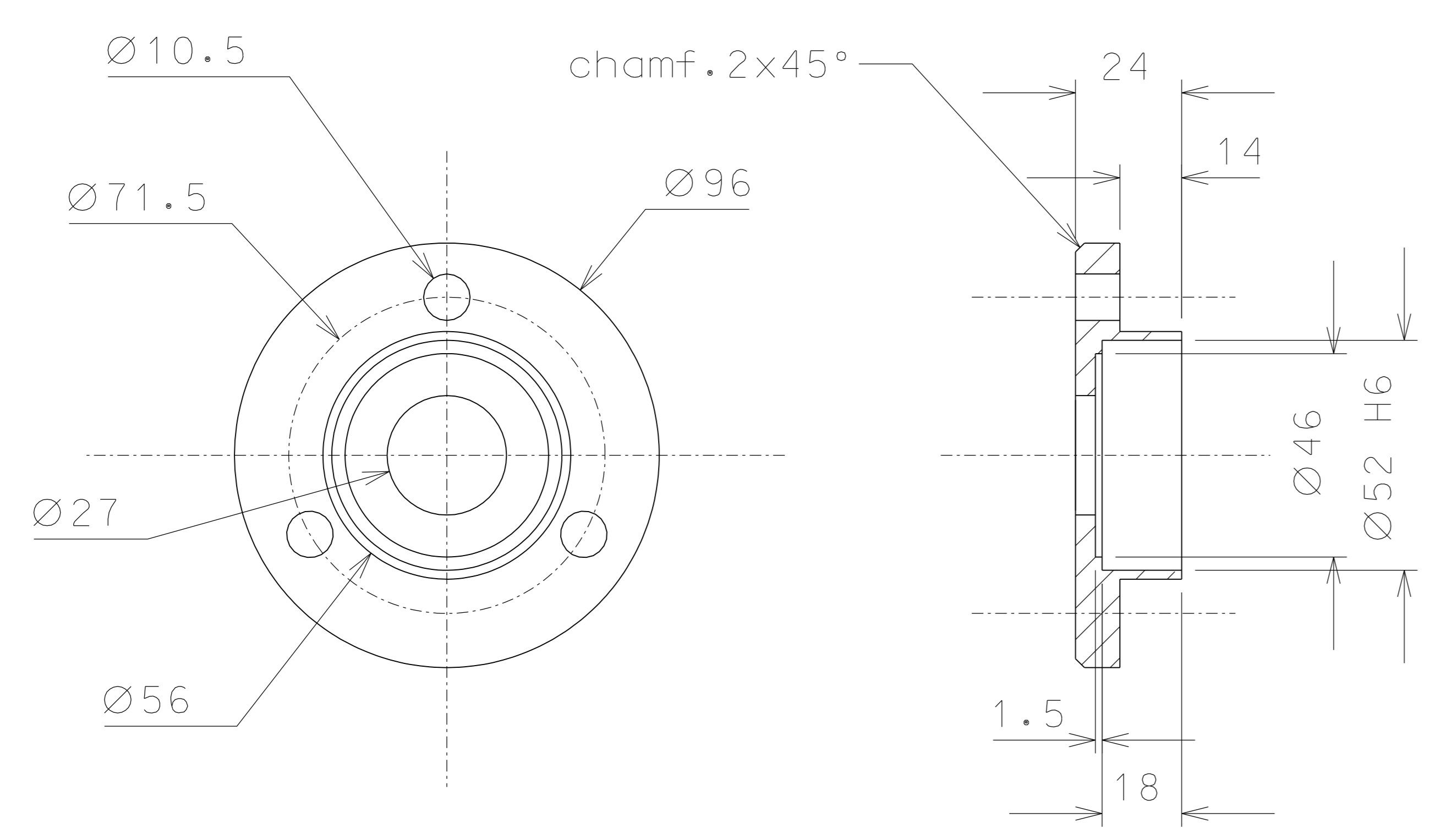


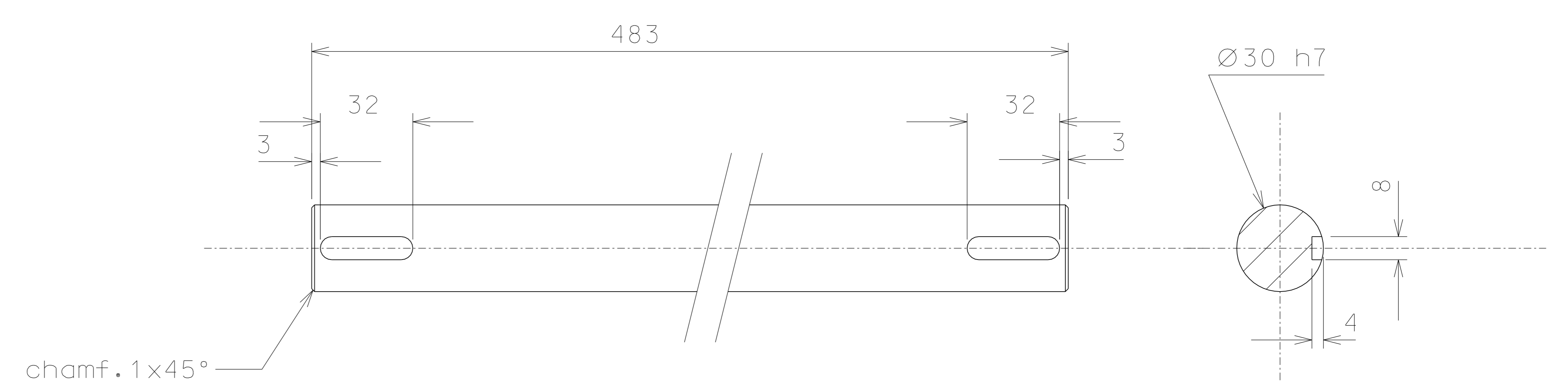
211  
Nickel flashing



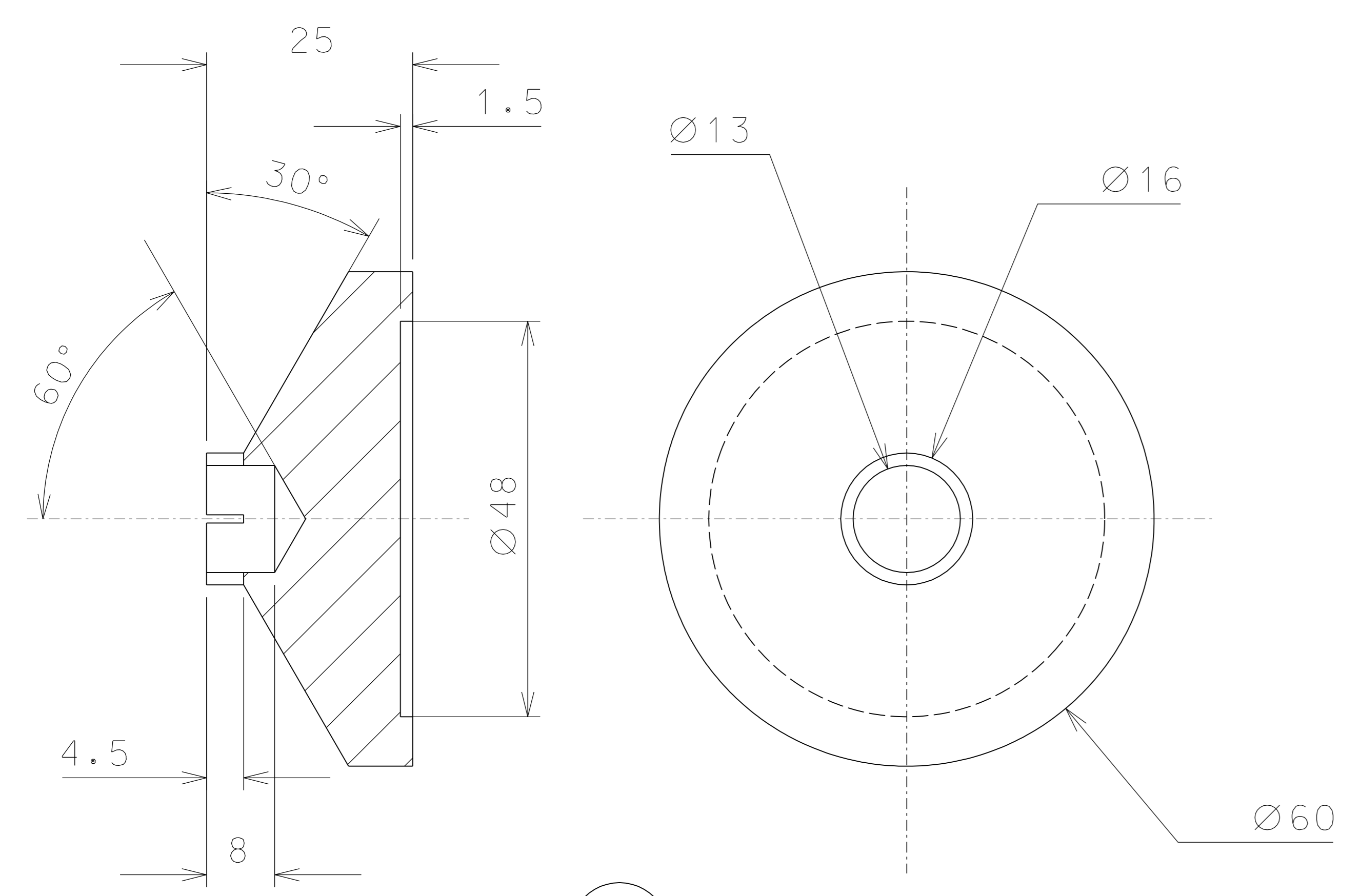
207  
Nickel flashing



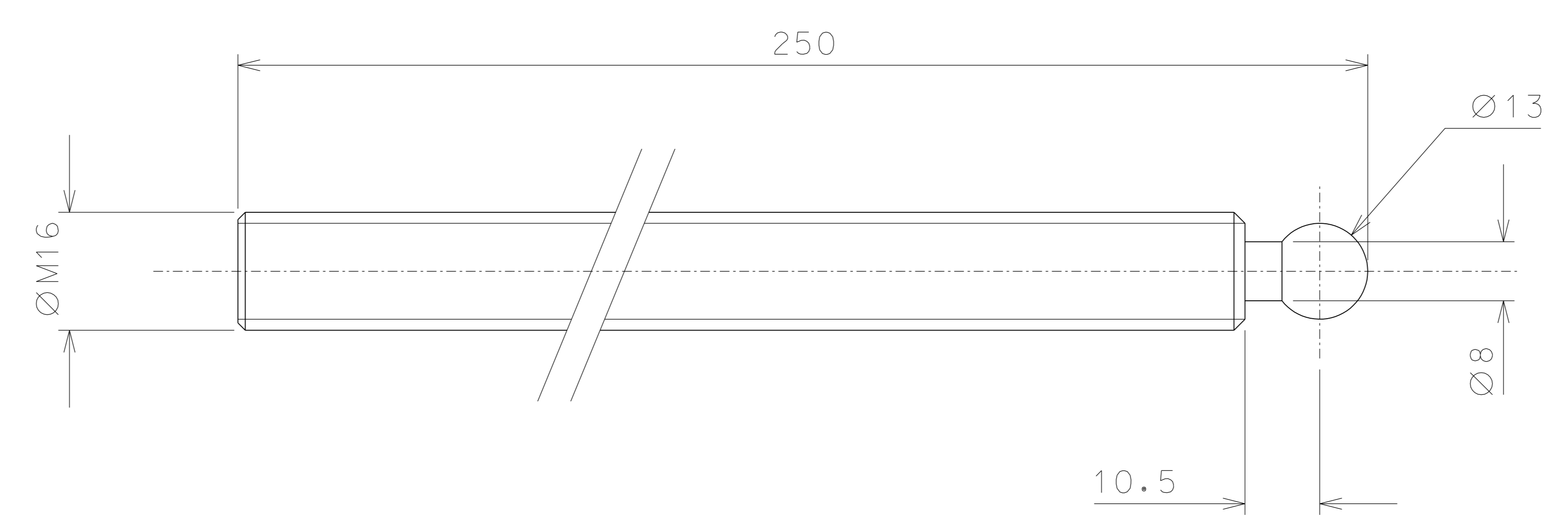
291



293  
Nickel flashing



202



201

		modified numeration table		31-10-06			
		changed all drawing		11-10-06			
ref.	pieces	note	date	signature			
modifications							
291	16	EN 6082	1/1				
211	4	C40	1/1				
207	4	C40	1/1				
202	2	EN 5083	1/1				
201	2	inox	1/1				
293	4	C40	1/1				
ref.	pieces	mat. and treatments	scale	ref.	pieces	mat. and treatments	scale

General machining tolerances UNI 5307-63								
Dimensions	< 6	> 6-30	> 30-120	> 120-315	> 315-1000	> 1000-2000	> 2000-4000	> 4000
linear Toll.	± 0.1	± 0.2	± 0.3	± 0.5	± 0.8	± 1.2	± 2	± 3
angular Toll.	± 1	± 30'	± 20'	± 10' referred to the shortest side				
designed for				R.De Salvo				
draw. by				G.Gennaro-PROMECC				
date				31-01-06		scale		1/2
title				HAM-OPTICAL BENCH				
				LIGO-D051202-02-D				
				detail from		192-193		A 2