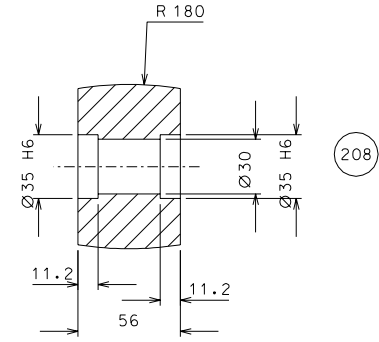
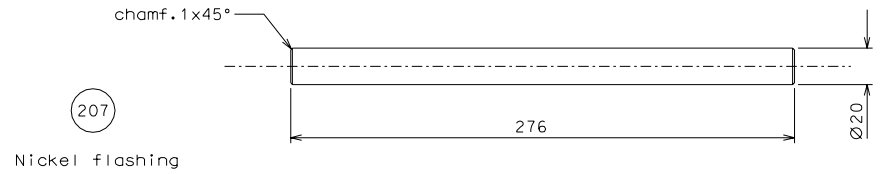


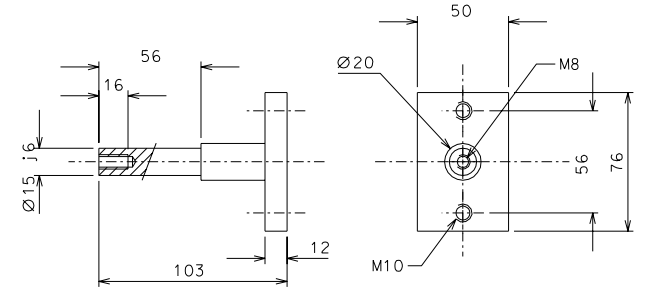
(211)
Nickel flashing



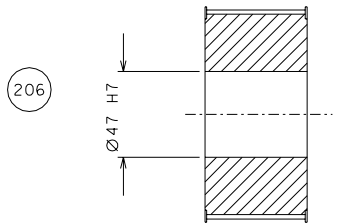
(208)



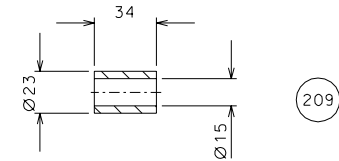
(207)
Nickel flashing



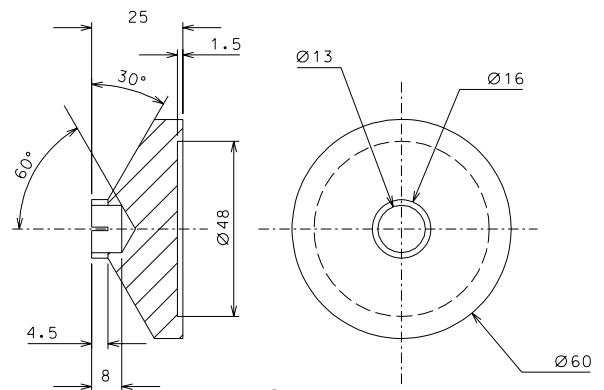
(210) Nickel flashing



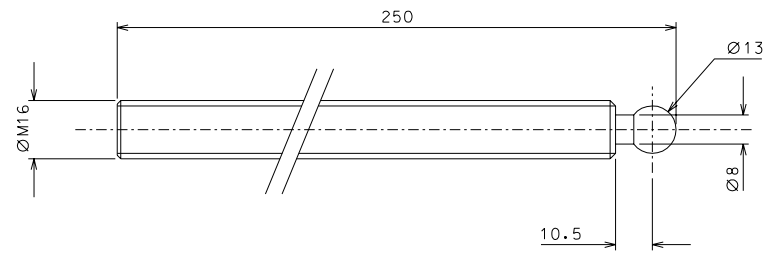
(206)



(209)



(202)



(201)

ref.	pieces	mat. and treatments	scale	note	date	signature
modifications						
208	8	EN 6082	1/1			
207	4	C40	1/1			
206	8	see list suppliers	1/1			
202	2	EN 5083	1/1	211	4	C40 1/1
201	2	inox	1/1	210	8	AIISI 304 1/1
				209	8	EN 6082 1/1

General machining tolerances UNI 5307-63						
Dimensions	< 6	> 6-30	> 30-120	> 120-315	> 315-1000	> 1000-4000 > 4000
linear Toli.	± 0,1	± 0,2	± 0,3	± 0,5	± 0,8	± 1,2 ± 2 ± 3
angular Toli.	± 1'	± 30'	± 20'	± 10' referred to the shortest side		
designed for R.De Salvo						
LIGO PROJECT				draw. by G. Gennaro-PROMEC		
date 31-01-06				scale 1/2		
title HAM-OPTICAL BENCH				LIGO-D051202-00-D		
ELEVATOR				date ¹ from 192-193		
				A 2		