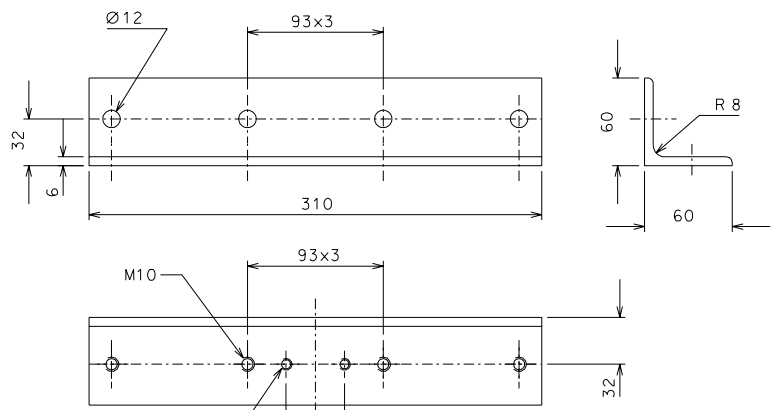
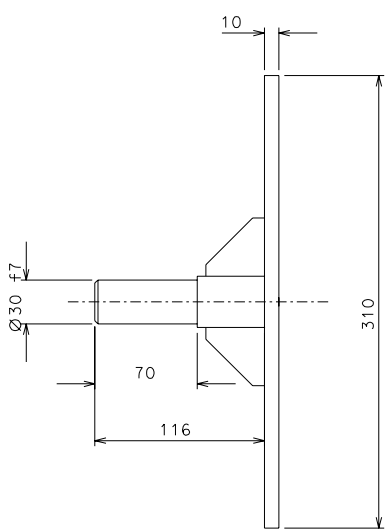
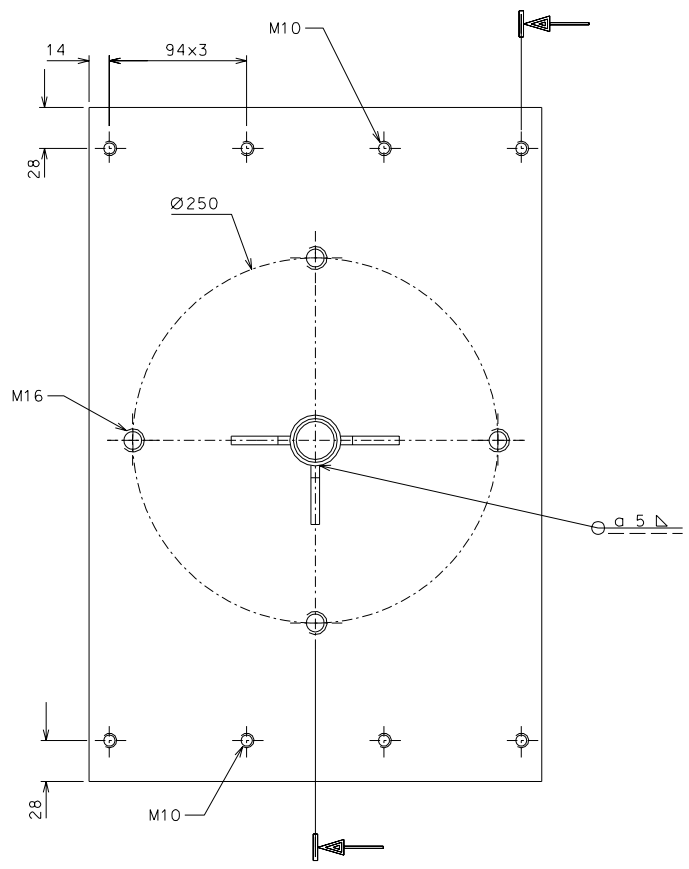
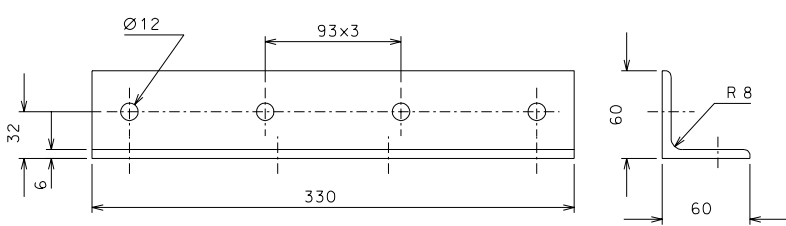


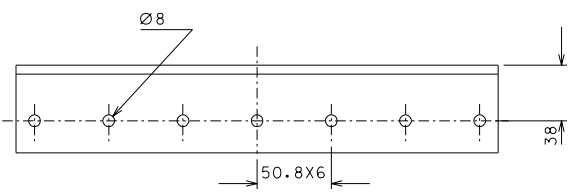
194



194.1



194.2



added tolerance part 194		31-08-06	
modified thickness part 194.1.2		15-07-06	
ref.	note	date	signature
modifications			
194.1	2	AISI 304	1/2.5
194	2	AISI 304	1/2.5
ref.	pieces	mat. and treatments	scale
ref.	pieces	mat. and treatments	scale

General machining tolerances UNI 5307-63						
Dimensions	< 6	= 6-30	> 30-120	> 120-315	> 315-1000	> 1000-2000
Linear Toli.	± 0.1	± 0.2	± 0.3	± 0.5	± 0.8	± 1.2
angular Toli.	± 1'	± 30'	± 20'	± 10' referred to the shortest side		
designed for: R.De Salvo						
LIGO PROJECT						
draw. by: G. Gennaro-PROMECC						
date: 27-01-06 scale: 1/2.5						
title: HAM-OPTICAL BENCH						
MOUNTING SUPPORTS						
LIGO-D051199-02-D						
total from: 188 A 2						