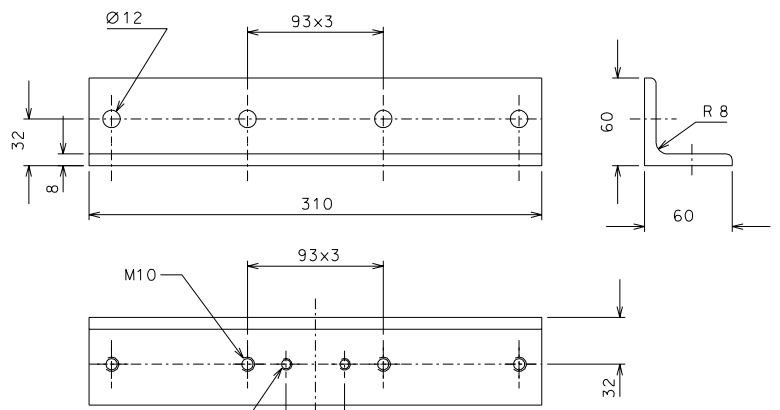
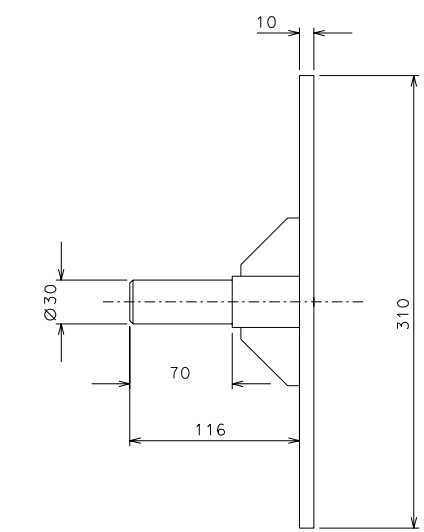
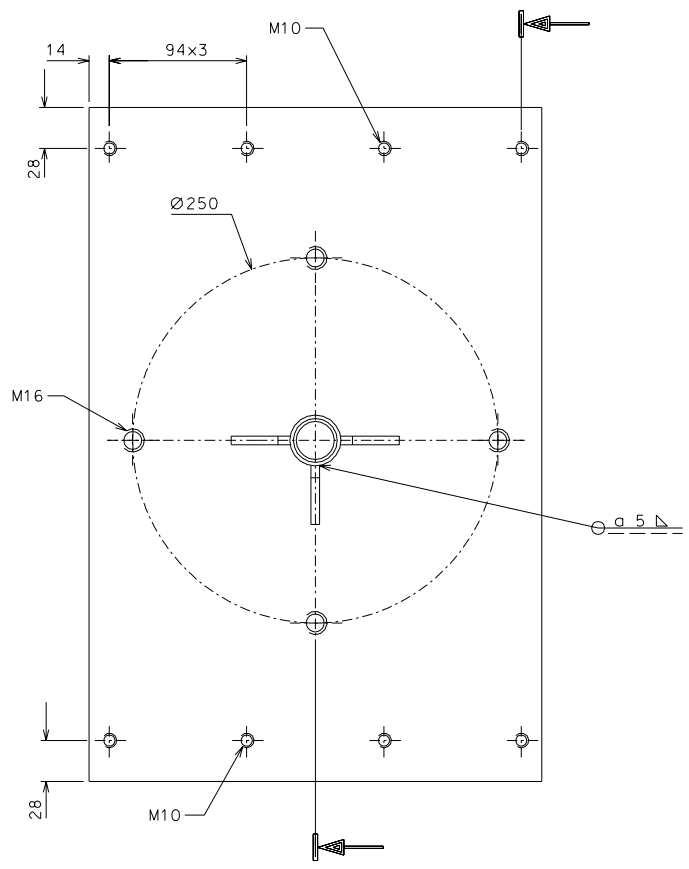
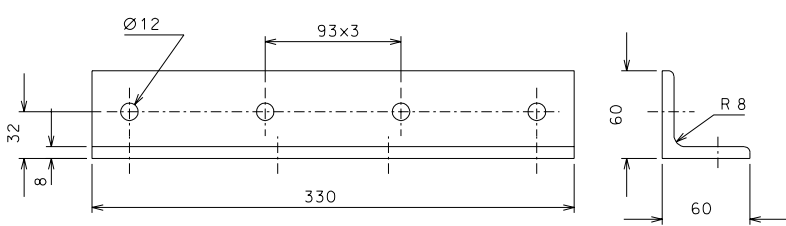


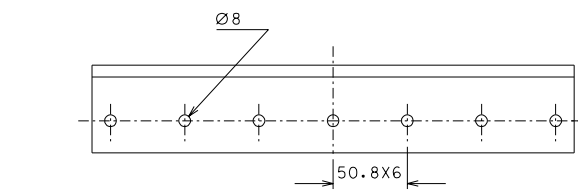
194



194.1



194.2



ref.	note	date	signature
modifications			
194.1	2	AISI 304	1/2.5
194	2	AISI 304	1/2.5
ref.	pieces	mat. and treatments	scale
194.2	2	AISI 304	1/2.5

General machining tolerances UNI 5307-63						
Dimensions	< 6	=6-30	>30-120	>120-315	>315-1000	>1000-2000
Linear Toli.	±0.1	±0.2	±0.3	±0.5	±0.8	±1.2
angular Toli.	±1'	±30'	±20'	±10' referred to the shortest side		

designed for		R.De Salvo	
draw. by		G. Gennaro-PROMECC	
date		27-01-06	
title		LIGO PROJECT	
scale		1/2.5	
HAM-OPTICAL BENCH		LIGO-D051199-00-D	
MOUNTING SUPPORTS		detail from 188 A 2	