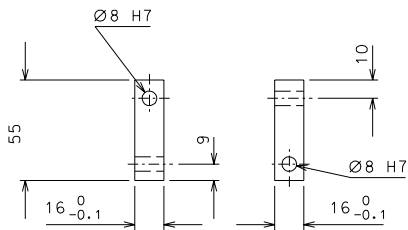
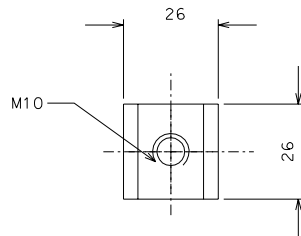


176



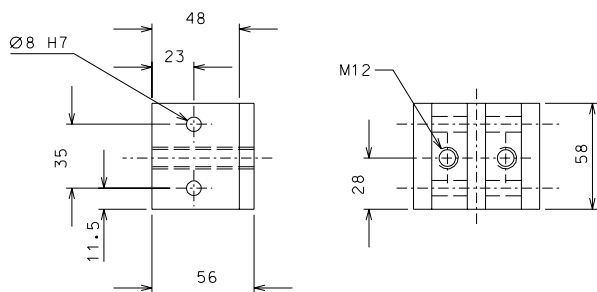
182

nickel flashing



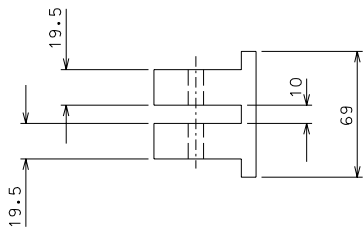
180

nickel flashing



189

nickel flashing



191

ref.	note	date	signature
modifications			
191	1	Fe 360	1/1
189	2	Fe 360	1/1
182	2	Fe 360	1/2
180	2	Fe 360	1/1
176	4	EN 6082	1/1
ref.	pieces	mat. and treatments	scale

General machining tolerances UNI 5307-63						
Dimensions	< 6	= 6-30	> 30-120	> 120-315	> 315-1000	> 1000-2000
Linear Toli.	± 0.1	± 0.2	± 0.3	± 0.5	± 0.8	± 1.2
angular Toli.	± 1'	± 30'	± 20'	referred to the shortest side		
designed for				R.De Salvo		
LIGO PROJECT				draw. by G. Gennaro-PROMEC		
date				3-11-05		
scale				1/2		
title				HAM-OPTICAL BENCH		
LARGE BLADE TOOL				LIGO-D051185-00-D		
ref. from				176-180		A 2