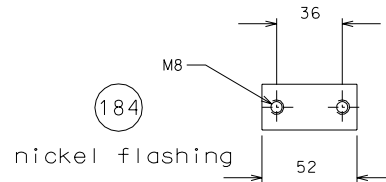
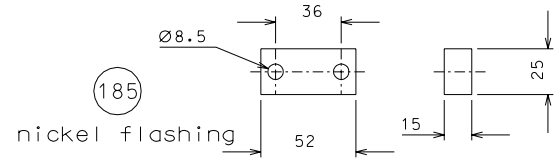
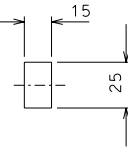


187



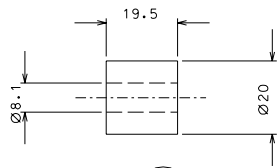
184

nickel flashing

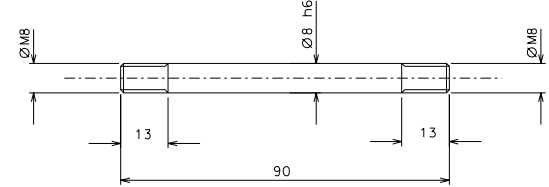


185

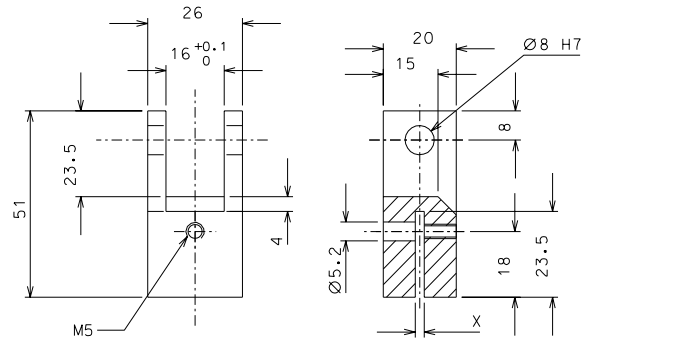
nickel flashing



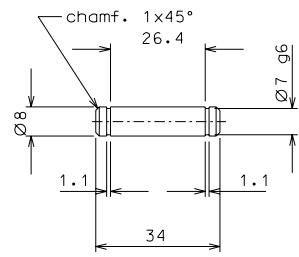
190



188



183 nickel flashing



181

modified number pieces				26-02-06			
ref.	note			date	signature		
modifications							
187	1	EN 6082	1/2				
185	1	Fe 360	1/2				
184	1	Fe 360	1/2				
183	1	Fe 360	1/1	190	6	EN 6082	1/1
181	2	inox	1/1	188	5	inox	1/1
ref.	pieces	mat. and treatments	scale	ref.	pieces	mat. and treatments	scale

General machining tolerances UNI 5307-63								
Dimensions	< 6	> 6-30	> 30-120	> 120-315	> 315-1000	> 1000-2000	> 2000-4000	> 4000
Linear Toli.	± 0.1	± 0.2	± 0.3	± 0.5	± 0.8	± 1.2	± 2	± 3
angular Toli.	± 1'	± 30'	± 20'	± 10' referred to the shortest side				
designed for				R.De Salvo				
draw. by				G. Gennaro-PROMECC				
date				29-10-05		scale		1/2
title				HAM-OPTICAL BENCH				
LARGE BLADE TOOL				LIGO-D051182-01-D		data ¹ from		180
						A		2