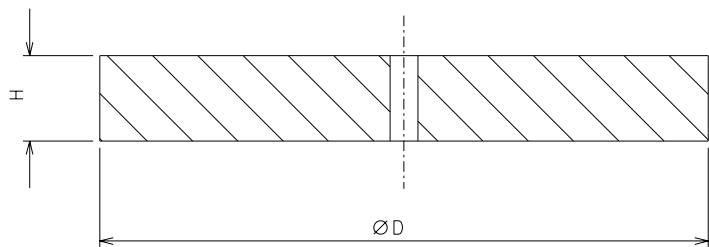
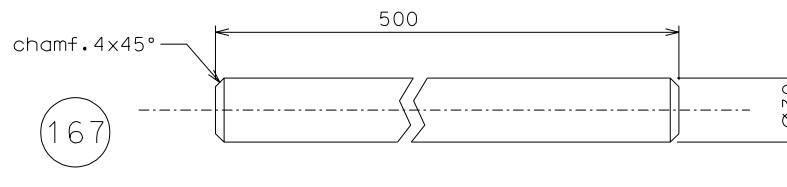
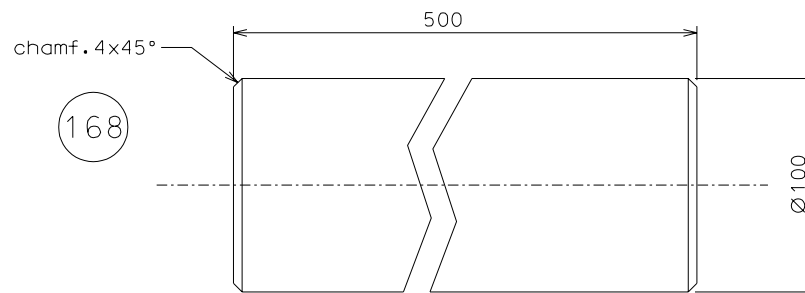


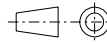
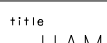
166 flame cut OK



D	H	N°	mass
368	44	1	33.4
97	40	2	2.32
149	40	2	5.48
197	40	2	9.57
298	40	2	21.9
397	40	2	38.87
401	40	2	39.66



		modified part 166 as built	19-07-06				
		modified n° parts detail 166	08-04-06				
		modified ref. assembly	26-02-06				
ref.		note	date	signature			
modifications							
168	17	inox	1/2.5				
167	16	inox	1/2.5				
166	13	Fe 340	1/2.5				
ref.	pieces	mat. and treatments	scale	ref.	pieces	mat. and treatments	scale

General machining tolerances UNI 5307-63								
Dimensions	< 6	>6-30	>30-120	>120-315	>315-1000	>1000-2000	>2000-4000	>4000
linear Toll.	± 0.1	± 0.2	± 0.3	± 0.5	± 0.8	± 1.2	± 2	± 3
angular Toll.	± 1	± 30'	± 20'	± 10' referred to the shortest side				
				designed for <b>R.De Salvo</b>				
				draw. by <b>G. Gennaro-PROMECC</b>				
title <b>HAM-OPTICAL BENCH</b> <b>BALLAST</b>				date 26-10-05		scale 1/2.5		
				LIGO-D051175-04-D				
				detail from 103-176		A 3		