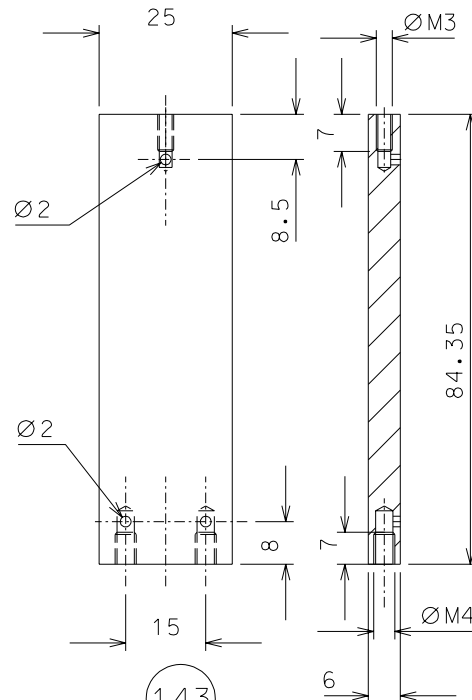
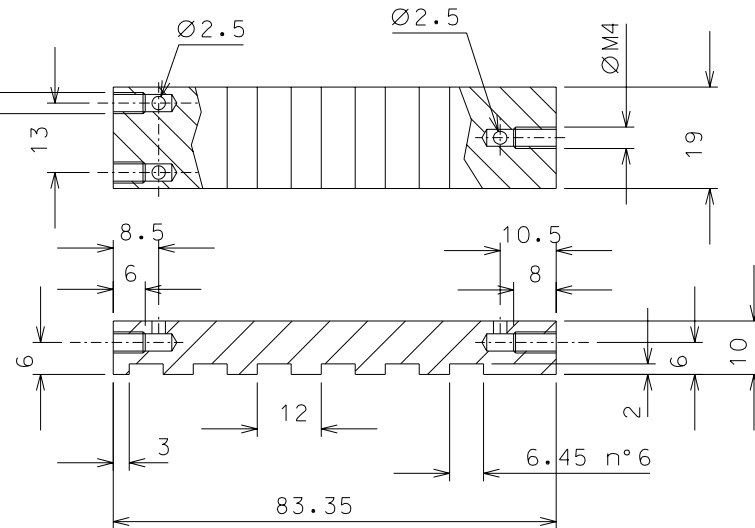


146



143

142



modified detail 142		26-01-06	
ref.	note	date	signature
modifications			
146	4	ARMCO steel	1/1
143	32	EN 1050 H24	1/1
142	32	ARMCO steel	1/1
ref.	pieces	mat. and treatments	scale

General machining tolerances UNI 5307-63								
Dimensions	< 6	>6-30	>30-120	>120-315	>315-1000	>1000-2000	>2000-4000	>4000
linear Toll.	± 0.1	± 0.2	± 0.3	± 0.5	± 0.8	± 1.2	± 2	± 3
angular Toll.	± 1	± 30'	± 20'	± 10' referred to the shortest side				
				LIGO PROJECT		designed for R.De Salvo		
title HAM-OPTICAL BENCH				draw. by G. Gennaro-PROMEC		date 20-10-05		scale 1/1
MAGNETIC DAMPER				LIGO-D051172-01-D		detail from 166		A 3