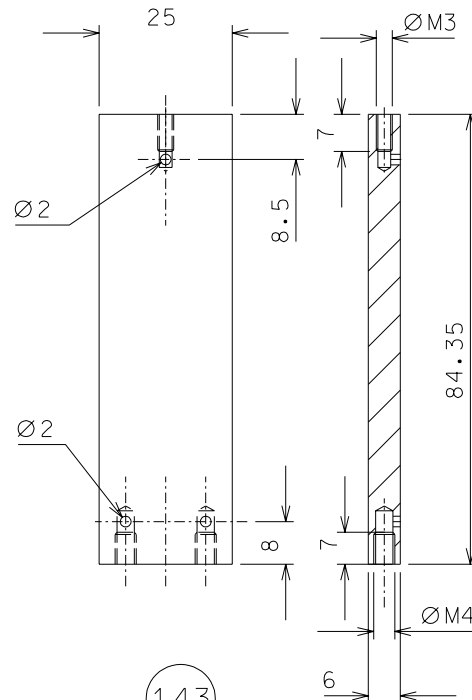
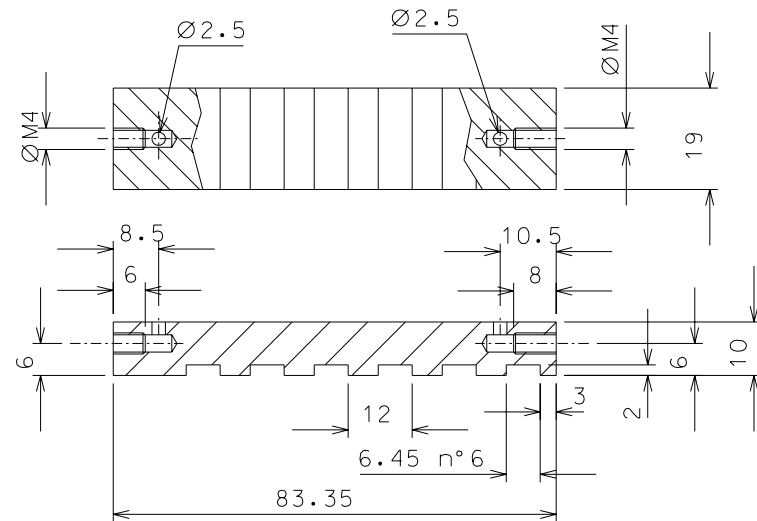


146



143

142



ref.	note	date	signature				
modifications							
146	4	ARMCO steel	1/1				
143	32	EN 1050 H24	1/1				
142	32	ARMCO steel	1/1				
ref.	pieces	mat. and treatments	scale	ref.	pieces	mat. and treatments	scale

General machining tolerances UNI 5307-63								
Dimensions	< 6	>6-30	>30-120	>120-315	>315-1000	>1000-2000	>2000-4000	>4000
linear Toll.	± 0.1	± 0.2	± 0.3	± 0.5	± 0.8	± 1.2	± 2	± 3
angular Toll.	± 1	± 30'	± 20'	± 10' referred to the shortest side				

	designed for R.De Salvo	
	draw. by G. Gennaro-PROMEC	
	date 20-10-05	scale 1/1
	title HAM-OPTICAL BENCH	
MAGNETIC DAMPER		LIGO-D051172-00-D detail from 166 A 3