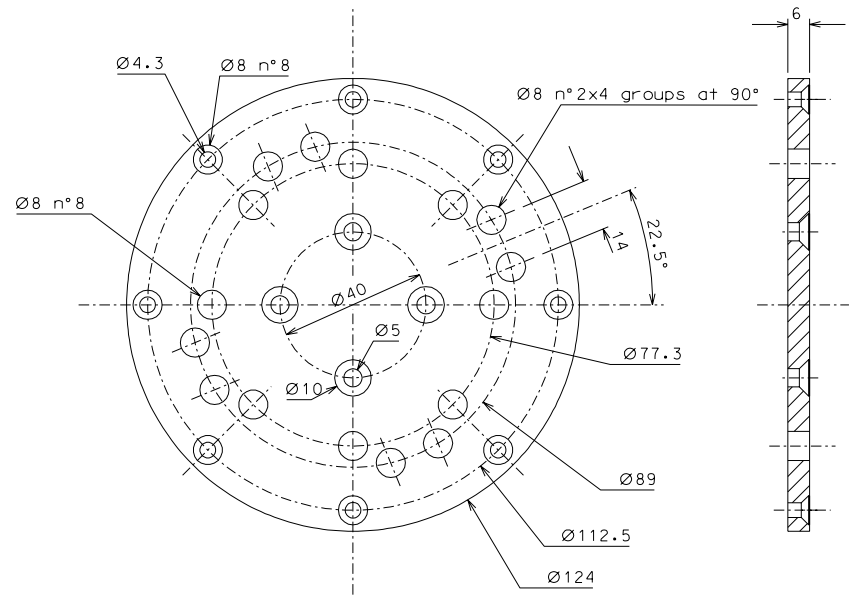
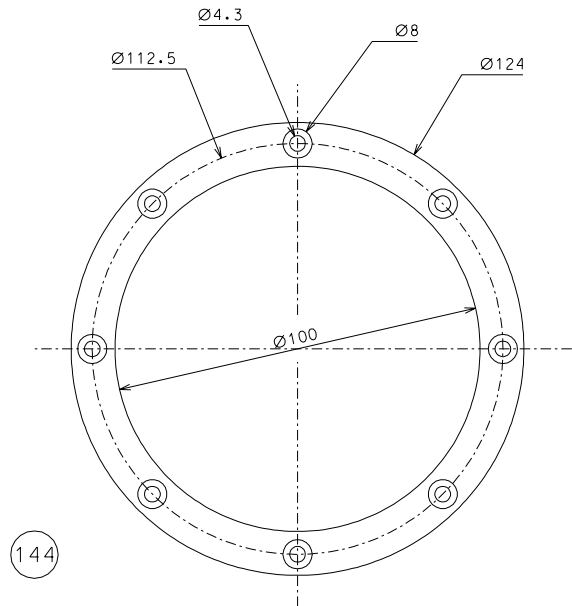


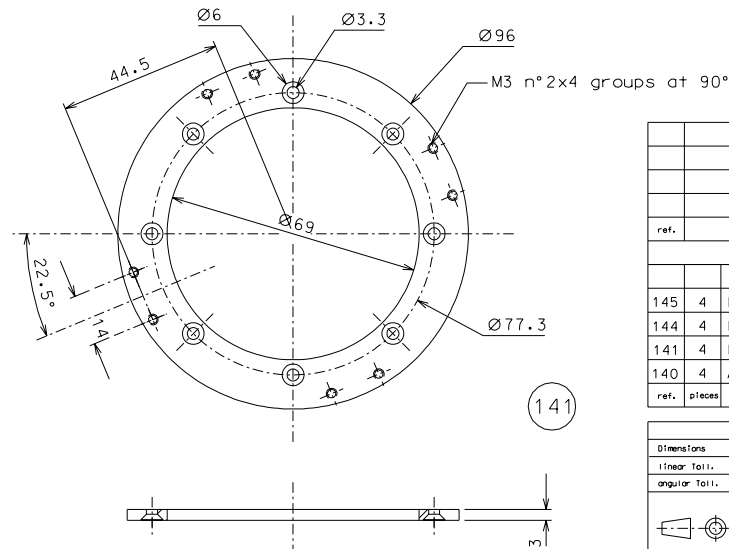
145



140



144



141

ref.	note	date	signature
modifications			
145	4 EN 6082	1/1	
144	4 EN 6082	1/1	
141	4 EN 6082	1/1	
140	4 ARMC0 steel	1/1	
ref. pieces	mat. and treatments	scale	ref. pieces mat. and treatments scale

General machining tolerances UNI 5307-63							
Dimensions	< 6	> 6-30	> 30-120	> 120-315	> 315-1000	> 1000-4000	> 4000
linear Toli.	$\pm 0.1$	$\pm 0.2$	$\pm 0.3$	$\pm 0.5$	$\pm 0.8$	$\pm 1.2$	$\pm 2$
angular Toli.	$\pm 1'$	$\pm 30'$	$\pm 20'$	$\pm 10'$ referred to the shortest side			
designed for <b>R.De Salvo</b>							
draw. by <b>G. Gennaro-PROMECC</b>							
date 7-10-05							
scale 1/1							
title <b>HAM-OPTICAL BENCH</b>							
MAGNETIC DAMPER							
date <sup>1</sup> from 166							
A 2							