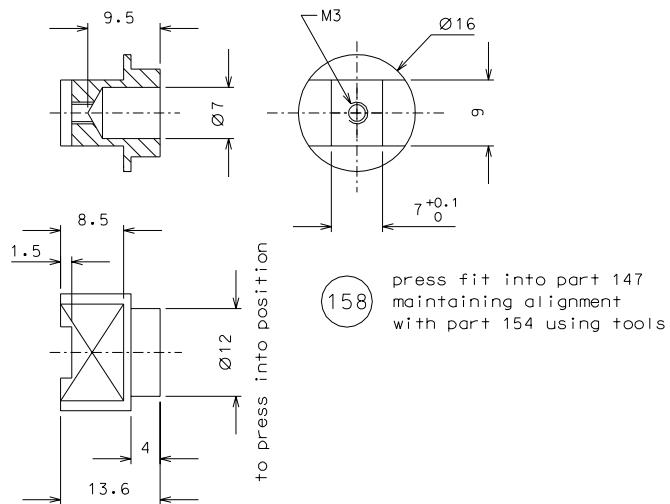
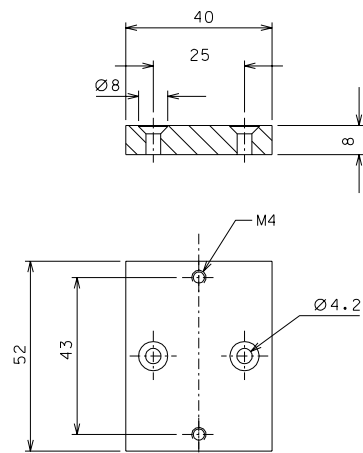


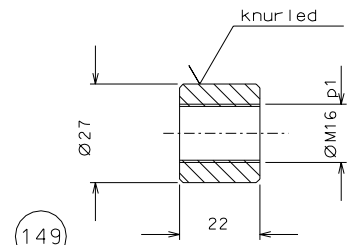
147



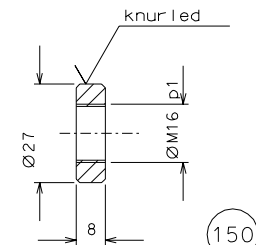
158



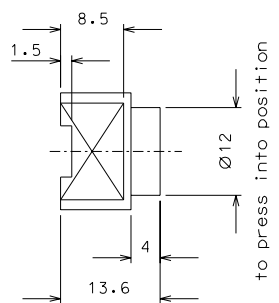
148



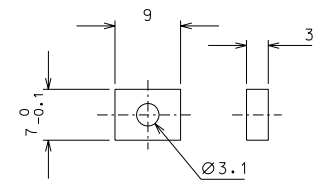
149



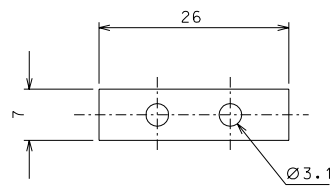
150



156



157



152

modified n° parts of all details		08-04-06	
modified n° parts of details 152-156-157		11-01-06	
ref.	note	date	signature
modifications			
152	2	spring steel	2/1
150	1	AISI 304	1/1
149	1	AISI 304	1/1
148	1	EN 6082	1/1
147	1	EN 6082	1/1
158	1	EN 6082	2/1
157	2	AISI 304	2/1
156	1	spring steel	2/1
ref.	pieces	mat. and treatments	scale

General machining tolerances UNI 5307-63								
Dimensions	< 6	> 6-30	> 30-120	> 120-315	> 315-1000	> 1000-2000	> 2000-4000	> 4000
Linear Toli.	± 0.1	± 0.2	± 0.3	± 0.5	± 0.8	± 1.2	± 2	± 3
angular Toli.	± 1'	± 30'	± 20'	± 10' referred to the shortest side				
designed for		R.De Salvo				draw. by		G. Gennaro-PROMECH
date		6-10-05		scale		1/1		
TITLE				HAM-OPTICAL BENCH				
BALANCE				LIGO-D051169-02-D		date <sup>1</sup> from		167
						A		2