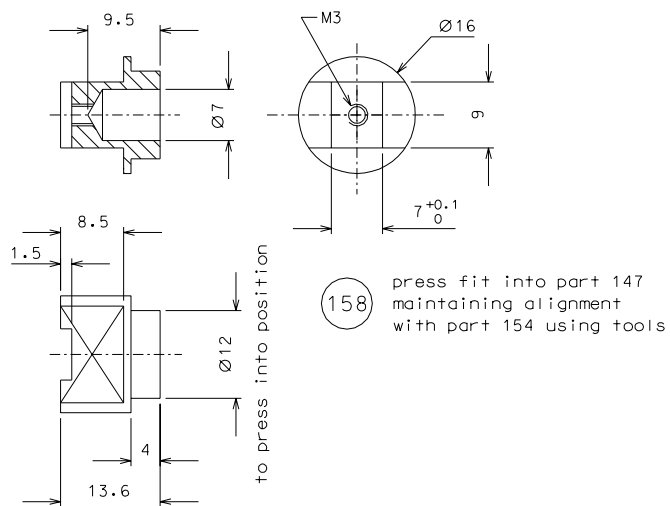
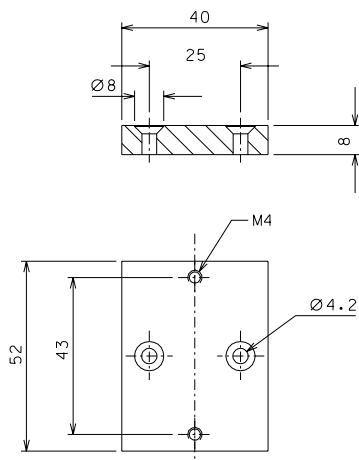


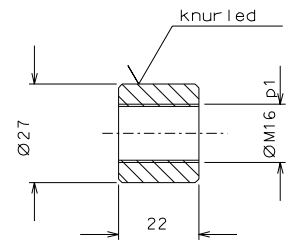
147



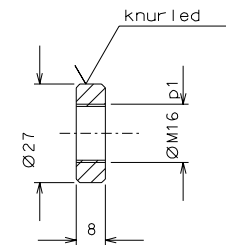
158 press fit into part 147 maintaining alignment with part 154 using tools



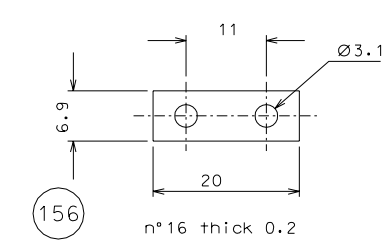
148 adjust or shim to match filter working point height with horizontal bar



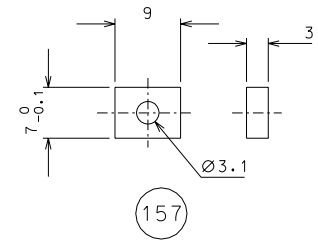
149



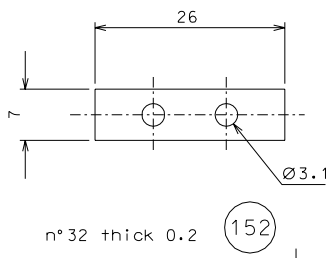
150



156



157



152

modified n° pieces of details 152-156-157				11-01-06			
ref.	note			date	signature		
modifications							
152	32	spring steel	2/1				
150	16	AISI 304	1/1				
149	16	AISI 304	1/1	158	16	EN 6082	2/1
148	16	EN 6082	1/1	157	32	AISI 304	2/1
147	16	EN 6082	1/1	156	16	spring steel	2/1
ref.	pieces	mat. and treatments	scale	ref.	pieces	mat. and treatments	scale

General machining tolerances UNI 5307-63							
Dimensions	< 6	> 6-30	> 30-120	> 120-315	> 315-1000	> 1000-4000	> 4000
Linear Toli.	± 0.1	± 0.2	± 0.3	± 0.5	± 0.8	± 1.2	± 3
Angular Toli.	± 1'	± 30'	± 20'	± 10' referred to the shortest side			
				designed for <b>R.De Salvo</b> draw. by <b>G. Gennaro-PROMECC</b> date 6-10-05 scale 1/1			
<b>LIGO PROJECT</b>				title <b>HAM-OPTICAL BENCH</b> <b>BALANCE</b>			
				LIGO-D051169-01-D sheet 167 A 2			