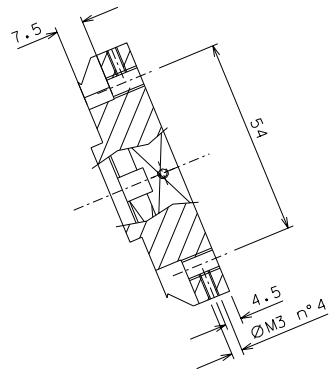
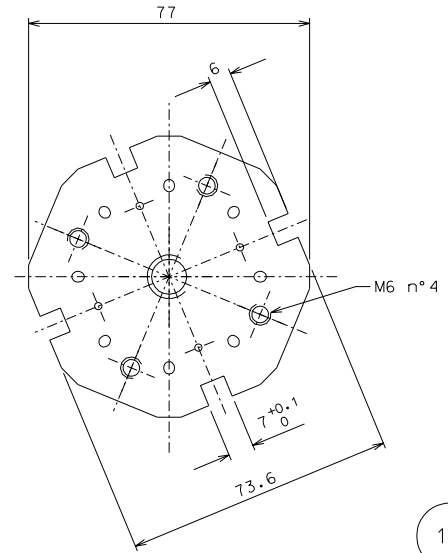
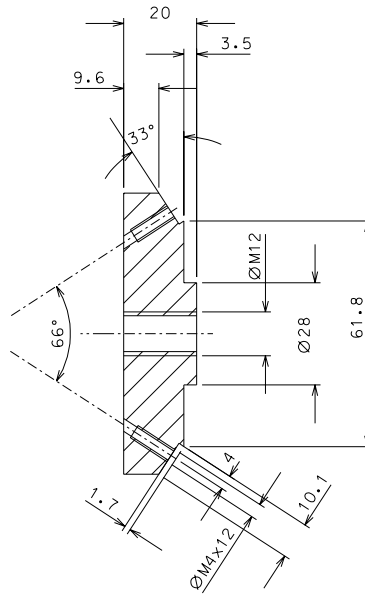
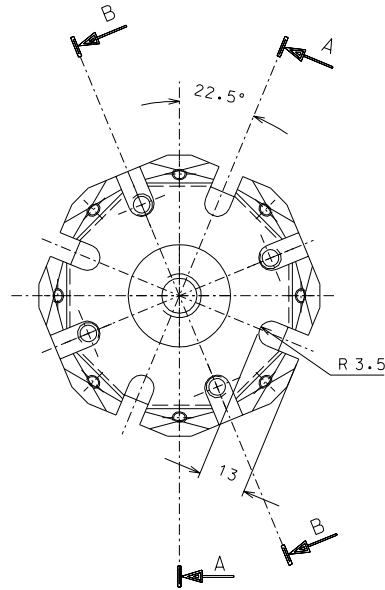


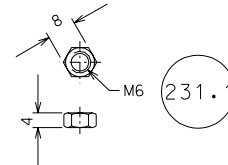
section A-A



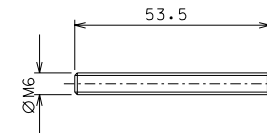
section B-B



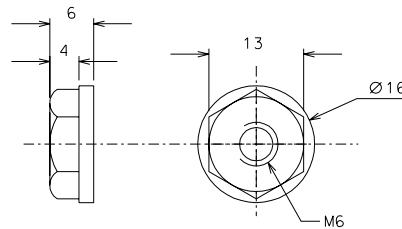
10



231.1

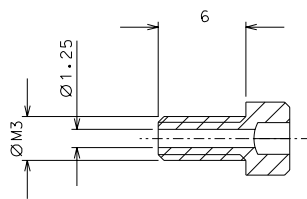


231



233

232



233	16	AISI 304	2/1				
232	16	AISI 304	2/1				
231.1	16	AISI 304	1/1				
231	16	AISI 304	1/1				
10	4	AISI 304	1/1				
ref.	pieces	mat. and treatments	scale	ref.	pieces	mat. and treatments	scale

General machining tolerances UNI 5307-63							
Dimensions	< 6	> 6-30	> 30-120	> 120-315	> 315-1000	> 1000-4000	> 4000
Linear Toli.	± 0.1	± 0.2	± 0.3	± 0.5	± 0.8	± 1.2	± 3
angular Toli.	± 1'	± 30'	± 20'	± 10' referred to the shortest side			

ref.	note	date	signature
	changed parts 231-233	02-10-06	
	changed M5 with M6	01-10-06	
	added washer	18-06-06	
	modified and added details	11-05-06	
modifications			

designed for
R.De Salvo
draw. by
G. Gennaro-PROMEC
date
4-10-05
scale
1/1

LIGO PROJECT

title
HAM-OPTICAL BENCH
BLADE CENTRAL SUPPORT

LIGD-D051168-05-D
date¹
from
106-167
A 2