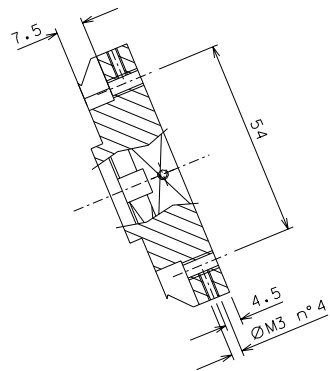
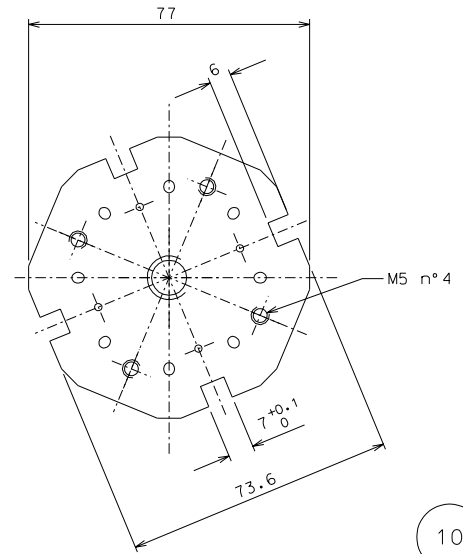
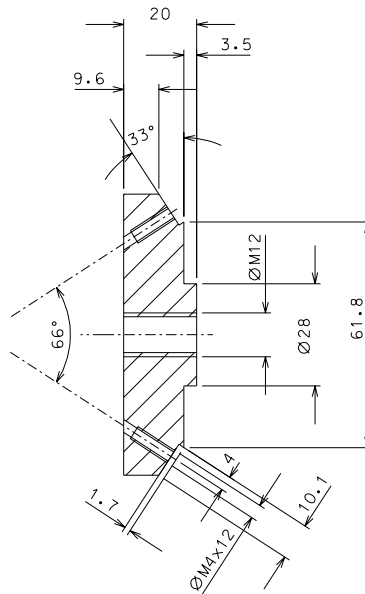
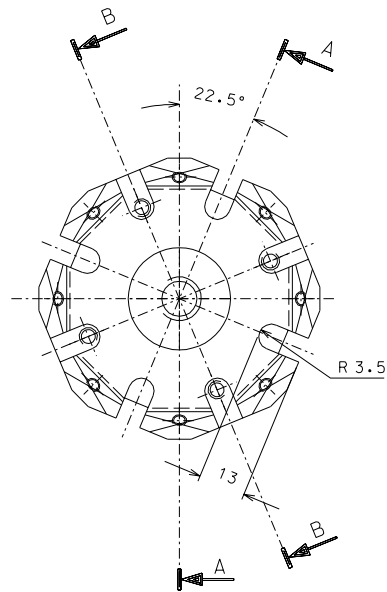


section A-A

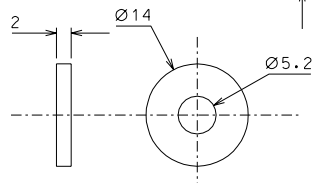
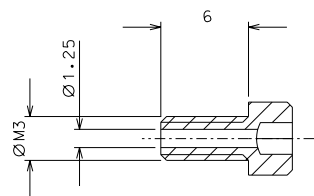


section B-B

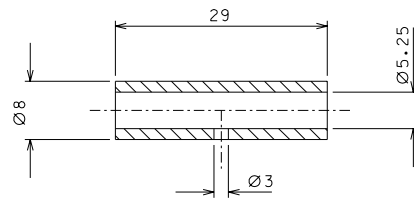


10

232



233



231

ref.	note	date	signature
	added washer	18-06-06	
	modified and added details	11-05-06	
	added dimension	12-01-06	
modifications			

ref.	pieces	mat. and treatments	scale
233	16	AISI 304	2/1
232	16	AISI 304	2/1
231	16	AISI 304	4/1
10	4	AISI 304	1/1

General machining tolerances UNI 5307-63								
Dimensions	< 6	> 6-30	> 30-120	> 120-315	> 315-1000	> 1000-2000	> 2000-4000	> 4000
linear Toli.	± 0.1	± 0.2	± 0.3	± 0.5	± 0.8	± 1.2	± 2	± 3
angular Toli.	± 1'	± 30'	± 20'	± 10' referred to the shortest side				

designed for		draw. by		date		scale	
R.De Salvo		G. Gennaro-PROMEC		4-10-05		1/1	
LIGO PROJECT				LIGO-D051168-03-D			
HAM-OPTICAL BENCH				date <sup>1</sup> from 106-167			
BLADE CENTRAL SUPPORT				A 2			