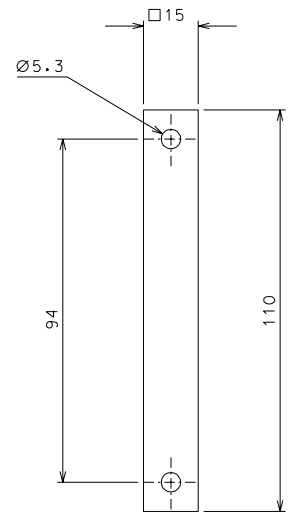
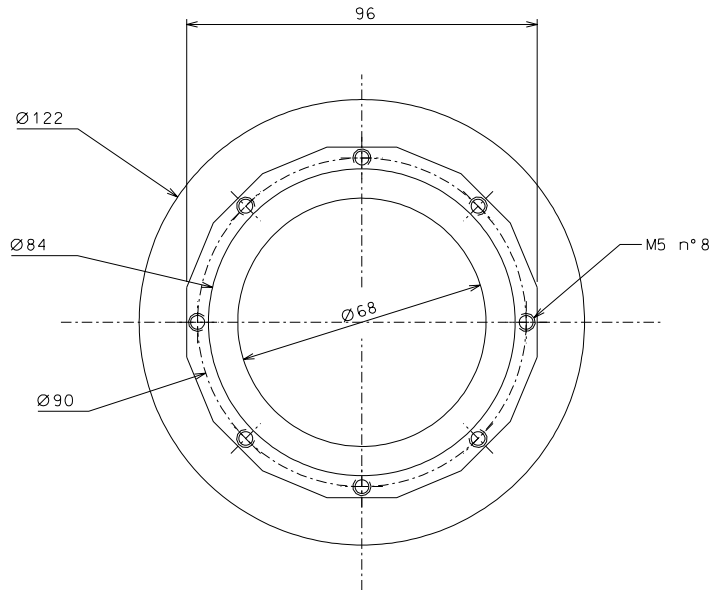
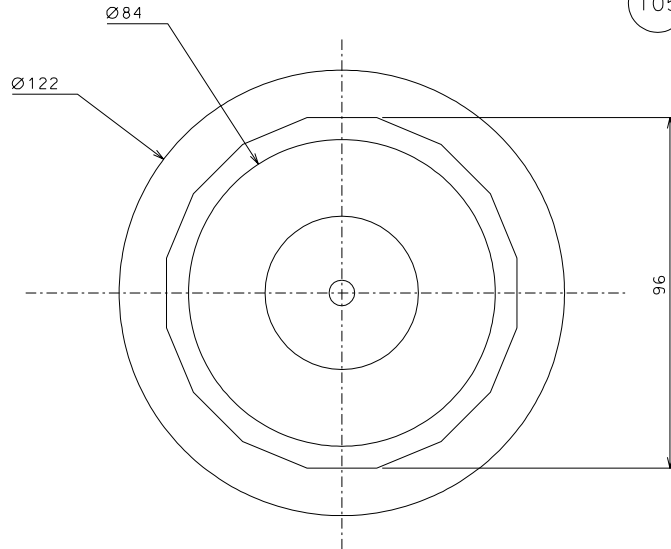
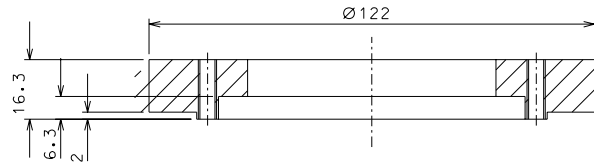


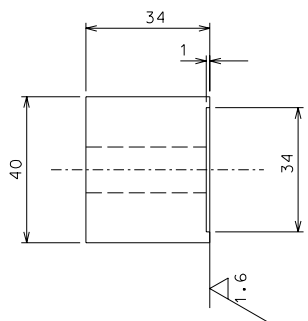
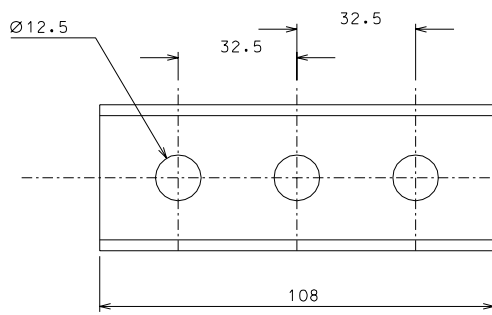
105



110



116



113

modified details 105-116		08-04-06	
modified detail 116		05-04-06	
ref.	note	date	signature
modifications			
116	1	ARMCO steel	1/1
113	8	AISI 304	1/1
110	1	peek	1/1
105	1	ARMCO steel	1/1
ref.	pieces	mat. and treatments	scale
ref.	pieces	mat. and treatments	scale

General machining tolerances UNI 5307-63								
Dimensions	< 6	> 6-30	> 30-120	> 120-315	> 315-1000	> 1000-2000	> 2000-4000	> 4000
Linear Toli.	± 0,1	± 0,2	± 0,3	± 0,5	± 0,8	± 1,2	± 2	± 3
angular Toli.	± 1'	± 30'	± 20'	± 10' referred to the shortest side				
		LIGO PROJECT		designed for R.De Salvo				
draw. by G. Gennaro-PROMEC		date 3-08-05		scale 1/1				
title HAM-OPTICAL BENCH		LIGO-D051161-01-D				detail 157		
LARGE FILTER						A 2		