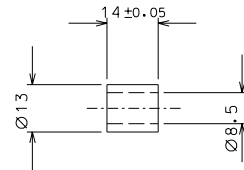
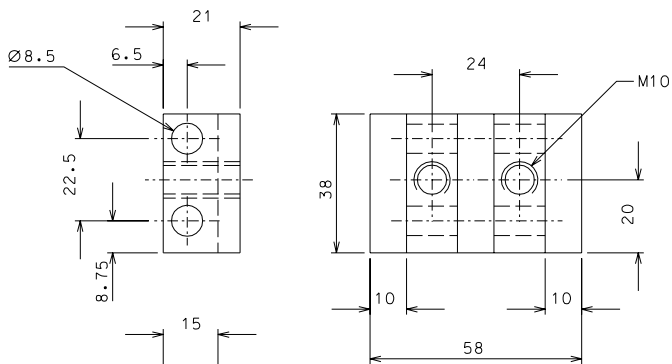


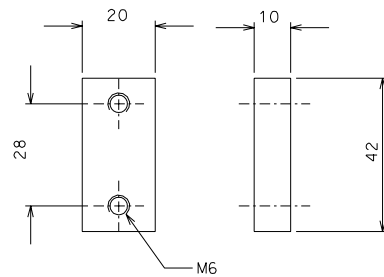
79



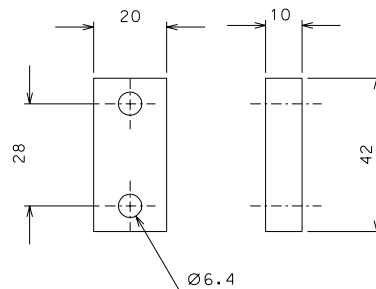
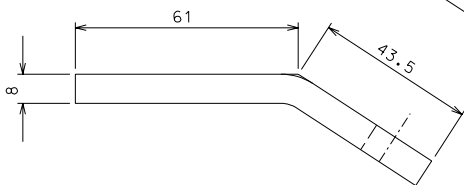
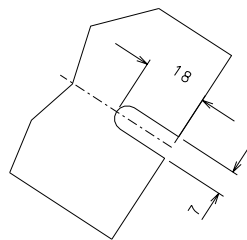
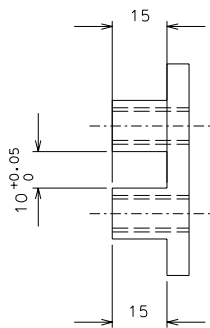
82



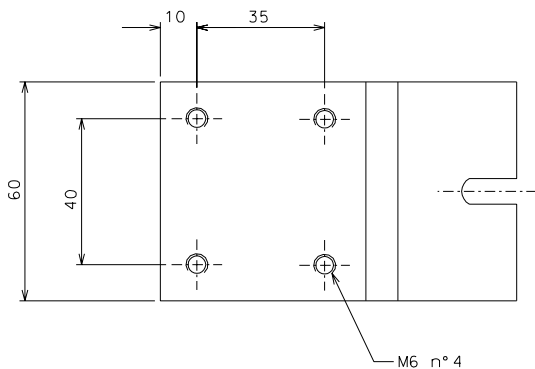
83



85



86



84

modified number pieces		26-02-06	
ref.	note	date	signature
modifications			
85	1	AISI 304	1/1
84	1	AISI 304	1/1
83	1	AISI 304	1/1
82	4	AISI 304	1/1
79	4	AISI 304	1/1
ref.	pieces	mat. and treatments	scale
86	1	AISI 304	1/1

General machining tolerances UNI 5307-63								
Dimensions	< 6	6-30	30-120	120-315	315-1000	> 1000-2000	> 2000-4000	> 4000
Linear Toli.	± 0.1	± 0.2	± 0.3	± 0.5	± 0.8	± 1.2	± 2	± 3
angular Toli.	± 1'	± 30'	± 20'	± 10' referred to the shortest side				
designed for				R.De Salvo				
draw. by				G. Gennaro-PROMECA				
date				28-01-05				
scale				1/1				
title				HAM-OPTICAL BENCH				
DETAIL MOUNTING BLADE				LIGO-D051146-01-D				
ref. from				144		A 2		